

Product datasheet for RC209344

CCL28 (NM_148672) Human Tagged ORF Clone

Product data:

Product Type: Expression Plasmids
Product Name: CCL28 (NM_148672) Human Tagged ORF Clone
Tag: Myc-DDK
Symbol: CCL28
Synonyms: CCK1; MEC; SCYA28
Mammalian Cell Selection: Neomycin
Vector: pCMV6-Entry (PS100001)
E. coli Selection: Kanamycin (25 ug/mL)
ORF Nucleotide Sequence: >RC209344 ORF sequence
Red=Cloning site Blue=ORF Green=Tags(s)

TTTTGTAATACGACTCACTATAGGGCGGCCGGAATTCGTCGACTGGATCCGGTACCGAGGAGATCTGCC
GCC**CGATCGCC**

ATGCAGCAGAGAGGACTCGCCATCGTGGCCTTGGCTGTCTGTGCGGCCCTACATGCCTCAGAAGCCATAC
TTCCATTGCCTCCAGCTGTTGCACGGAGGTTTCACATCATATTTCCAGAAGGCTCCTGGAAGAGTGAA
TATGTGTCGCATCCAGAGAGCTGATGGGATTGTGACTTGGCTGTCTCATCCTTCATGTCAAGCGCAGA
AGAATCTGTGTCAGCCCGCACAACCATACTGTTAAGCAGTGGATGAAAGTGAAGCTGCCAAGAAAAATG
GTAAAGGAAATGTTTGCCACAGGAAGAAACACCATGGCAAGAGGAACAGTAACAGGGCACATCAGGGGAA
ACACGAAACATACGGCCATAAACTCCTTAT

ACGCGTACGCGGCCGCTCGAGCAGAAACTCATCTCAGAAGAGGATCTGGCAGCAAATGATATCCTGGATT
ACAAGGATGACGACGATAAGGTTTAA

Protein Sequence: >RC209344 protein sequence
Red=Cloning site Green=Tags(s)

MQQRGLAIVALAVCAALHASEAILPIASSCCTEVSHHISRLLERVNMCRIRADGDCDLAAVILHVKRR
RICVSPHNHTVKQWMKVQAACKNGKGNVCHRKKHHGKRNSNRAHQKHETYGHKTPY

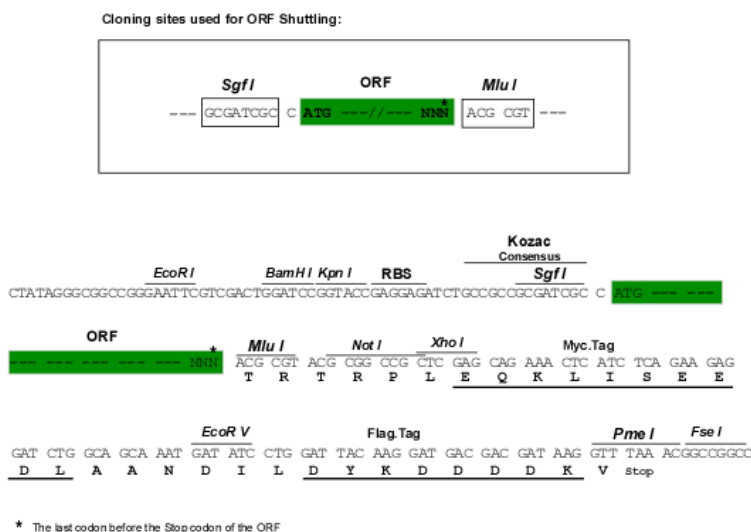
TRTRPLEQKLISEEDLAANDILDYKDDDDKV

Chromatograms: https://cdn.origene.com/chromatograms/mk6548_f11.zip

Restriction Sites: SgfI-MluI



[View online »](#)

Cloning Scheme:


ACCN: NM_148672

ORF Size: 381 bp

OTI Disclaimer: The molecular sequence of this clone aligns with the gene accession number as a point of reference only. However, individual transcript sequences of the same gene can differ through naturally occurring variations (e.g. polymorphisms), each with its own valid existence. This clone is substantially in agreement with the reference, but a complete review of all prevailing variants is recommended prior to use. [More info](#)

OTI Annotation: This clone was engineered to express the complete ORF with an expression tag. Expression varies depending on the nature of the gene.

Components: The ORF clone is ion-exchange column purified and shipped in a 2D barcoded Matrix tube containing 10ug of transfection-ready, dried plasmid DNA (reconstitute with 100 ul of water).

- Reconstitution Method:**
1. Centrifuge at 5,000xg for 5min.
 2. Carefully open the tube and add 100ul of sterile water to dissolve the DNA.
 3. Close the tube and incubate for 10 minutes at room temperature.
 4. Briefly vortex the tube and then do a quick spin (less than 5000xg) to concentrate the liquid at the bottom.
 5. Store the suspended plasmid at -20°C. The DNA is stable for at least one year from date of shipping when stored at -20°C.

RefSeq: [NM_148672.3](#), [NP_683513.1](#)

RefSeq Size: 3126 bp

RefSeq ORF: 384 bp

Locus ID: 56477

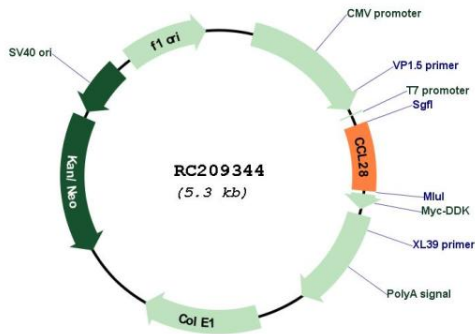
UniProt ID: [Q9NRJ3](#)

Cytogenetics: 5p12
Protein Families: Druggable Genome, Secreted Protein
Protein Pathways: Chemokine signaling pathway, Cytokine-cytokine receptor interaction

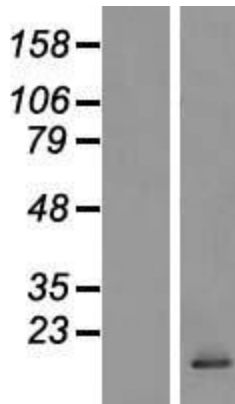
MW: 14.3 kDa

Gene Summary: This antimicrobial gene belongs to the subfamily of small cytokine CC genes. Cytokines are a family of secreted proteins involved in immunoregulatory and inflammatory processes. The CC cytokines are proteins characterized by two adjacent cysteines. The cytokine encoded by this gene displays chemotactic activity for resting CD4 or CD8 T cells and eosinophils. The product of this gene binds to chemokine receptors CCR3 and CCR10. This chemokine may play a role in the physiology of extracutaneous epithelial tissues, including diverse mucosal organs. Multiple transcript variants encoding two different isoforms have been found for this gene. [provided by RefSeq, Sep 2014]

Product images:



Circular map for RC209344



Western blot validation of overexpression lysate (Cat# [LY407745]) using anti-DDK antibody (Cat# [TA50011-100]). Left: Cell lysates from untransfected HEK293T cells; Right: Cell lysates from HEK293T cells transfected with RC209344 using transfection reagent MegaTran 2.0 (Cat# [TT210002]).