

Product datasheet for **RC209340**

SCP3 (SYCP3) (NM_153694) Human Tagged ORF Clone

Product data:

Product Type:	Expression Plasmids
Product Name:	SCP3 (SYCP3) (NM_153694) Human Tagged ORF Clone
Tag:	Myc-DDK
Symbol:	SCP3
Synonyms:	COR1; RPRGL4; SCP3; SPGF4
Mammalian Cell Selection:	Neomycin
Vector:	pCMV6-Entry (PS100001)
E. coli Selection:	Kanamycin (25 ug/mL)
ORF Nucleotide Sequence:	>RC209340 ORF sequence Red=Cloning site Blue=ORF Green=Tags(s)

TTTTGTAATACGACTCACTATAGGGCGCCGGAATTCGTCGACTGGATCCGGTACCGAGGAGATCTGCC
GCC**CGATCGCC**

ATGGTGTCTCCGAAAAAGTATTCCAGGAAATCTGGGAAGCCGTCTGTGGAAGATCAGTTTACGAGAG
CCTATGACTTTGAGACTGAAGATAAGAAAGATCTGAGTGGATCAGAGGAAGATGTTATTGAAGGGAAGAC
TGCAGTCATTGAGAAACGTAGGAAGAAAAGGTCTTCTGCAGGAGTAGTTGAAGATATGGGGGTGAAGTG
CAGAATATGCTGGAAGGAGTTGGAGTTGACATTAACAAGGCTCTTCTTGCCAAGAGAAAAGAGACTAGAAA
TGTATACCAAGGCTTCTCTCAAACTAGTAACCAAGAAATGAACATGTTTGGAAAACACAACAAGATCA
AAGGCAGAAGCTTAACCAAGAATATTCTCAGCAGTTTCTGACTTTGTTTCAGCAGTGGGATTTAGATATG
CAGAAAAGCTGAGGAACAAGAAGAAAAAATCTTAATATGTTTCGACAGCAACAAAAGATTCTTCAACAAT
CTAGAATTGTTTCAGAGCCAGAGATTGAAAAAATTAACAGTTATATGAGCAGTTCATAAAGAGTATGGA
AGAGTTGGAGAAGAATCATGATAATCTACTTACTGGTGCACAAAATGAATTTAAAAAAGAAATGGCTATG
TTGCAAAAAAATTATGATGAAAACCTCAGCAGCAAGAGATAGCAAGTGTTCGGAAGTCTCTTCAATCCA
TGTTATTC

ACGCGTACGCGGCCGCTCGAGCAGAACTCATCTCAGAAGAGGATCTGGCAGCAAATGATATCCTGGATT
ACAAGGATGACGACGATAAGGTTTAA



[View online »](#)

Protein Sequence: >RC209340 protein sequence
 Red=Cloning site Green=Tags(s)

MVSSGKKYSRKS GKPSVEDQFTRAYDFETEDKKDL SGSEEDVIEGKTAVIEKRRKKRSSAGVVEDMGGEV
 QNMLEGVGVDINKALLAKRKRLEMYTKASLKTSNQKIEHVWKTQQDQRQKLNQEYSQQFLTLFQQWLDLM
 QKAAEEQEEKILNMFRRQQKILQQSRIVQSQRLKTIKQLYEQFIKSMEELEKNHDNLLTGAQNEFKKEMAM
 LQKKIMMETQQEIASVRKSLQSMFLF

TRTRPLEQKLISEEDLAANDILDYKDDDDKV

Chromatograms: https://cdn.origene.com/chromatograms/mk6548_g02.zip

Restriction Sites: SgfI-MluI

Cloning Scheme:

Cloning sites used for ORF Shuttling:



* The last codon before the Stop codon of the ORF

ACCN: NM_153694

ORF Size: 708 bp

OTI Disclaimer: The molecular sequence of this clone aligns with the gene accession number as a point of reference only. However, individual transcript sequences of the same gene can differ through naturally occurring variations (e.g. polymorphisms), each with its own valid existence. This clone is substantially in agreement with the reference, but a complete review of all prevailing variants is recommended prior to use. [More info](#)

OTI Annotation: This clone was engineered to express the complete ORF with an expression tag. Expression varies depending on the nature of the gene.

Components: The ORF clone is ion-exchange column purified and shipped in a 2D barcoded Matrix tube containing 10ug of transfection-ready, dried plasmid DNA (reconstitute with 100 ul of water).

Reconstitution Method:

1. Centrifuge at 5,000xg for 5min.
2. Carefully open the tube and add 100ul of sterile water to dissolve the DNA.
3. Close the tube and incubate for 10 minutes at room temperature.
4. Briefly vortex the tube and then do a quick spin (less than 5000xg) to concentrate the liquid at the bottom.
5. Store the suspended plasmid at -20°C. The DNA is stable for at least one year from date of shipping when stored at -20°C.

RefSeq: [NM_153694.4](#), [NP_710161.1](#)

RefSeq Size: 1137 bp

RefSeq ORF: 711 bp

Locus ID: 50511

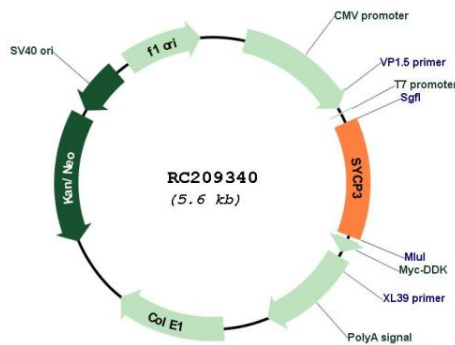
UniProt ID: [Q8IZU3](#)

Cytogenetics: 12q23.2

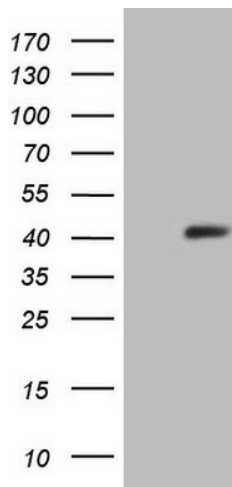
MW: 27.7 kDa

Gene Summary: This gene encodes an essential structural component of the synaptonemal complex. This complex is involved in synapsis, recombination and segregation of meiotic chromosomes. Mutations in this gene are associated with azoospermia in males and susceptibility to pregnancy loss in females. Alternate splicing results in multiple transcript variants that encode the same protein. [provided by RefSeq, May 2010]

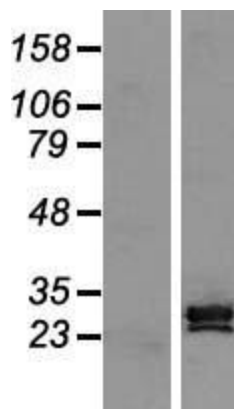
Product images:



Circular map for RC209340



HEK293T cells were transfected with the pCMV6-ENTRY control (Cat# [PS100001], Left lane) or pCMV6-ENTRY SYCP3 (Cat# RC209340, Right lane) cDNA for 48 hrs and lysed. Equivalent amounts of cell lysates (5 ug per lane) were separated by SDS-PAGE and immunoblotted with anti-SYCP3 (Cat# [TA806646])(1:2000). Positive lysates [LY406978] (100ug) and [LC406978] (20ug) can be purchased separately from OriGene.



Western blot validation of overexpression lysate (Cat# [LY406978]) using anti-DDK antibody (Cat# [TA50011-100]). Left: Cell lysates from untransfected HEK293T cells; Right: Cell lysates from HEK293T cells transfected with RC209340 using transfection reagent MegaTran 2.0 (Cat# [TT210002]).



Coomassie blue staining of purified SYCP3 protein (Cat# [TP309340]). The protein was produced from HEK293T cells transfected with SYCP3 cDNA clone (Cat# RC209340) using MegaTran 2.0 (Cat# [TT210002]).