

Product datasheet for **RC209337**

IL27 (NM_145659) Human Tagged ORF Clone

Product data:

Product Type: Expression Plasmids
Product Name: IL27 (NM_145659) Human Tagged ORF Clone
Tag: Myc-DDK
Symbol: IL27
Synonyms: IL-27; IL-27A; IL27A; IL27p28; IL30; p28
Mammalian Cell Selection: Neomycin
Vector: pCMV6-Entry (PS100001)
E. coli Selection: Kanamycin (25 ug/mL)
ORF Nucleotide Sequence: >RC209337 ORF sequence
Red=Cloning site Blue=ORF Green=Tags(s)

TTTTGTAATACGACTCACTATAGGGCGGCCGGAATTCGTCGACTGGATCCGGTACCGAGGAGATCTGCC
GCC**CGATCGCC**

ATGGGCCAGACGGCAGGCGACCTTGGCTGGCGGCTCAGCCTGTTGCTGCTTCCCTTGCTCCTGGTTC AAG
CTGGTGTCTGGGGATTCCCAAGGCCCCAGGGAGGCCCCAGCTGAGCCTGCAGGAGCTGCGGAGGGAGTT
CACAGTCAGCCTGCATCTCGCCAGGAAGCTGCTCGCCGAGGTTGCGGGCCAGGCCACCGCTTTGCGGAA
TCTCACCTGCCAGGAGTGAACCTGTACCTCCTGCCCTGGGAGAGCAGCTCCCTGATGTTTCCCTGACCT
TCCAGGCTGGCGCCGCTCTCTGACCCGGAGCGTCTCTGCTTCACTCCACCACGCTTCAGCCCTCCA
TGCCCTGCTGGGAGGGCTGGGGACCCAGGGCCGCTGGACCAACATGGAGAGGATGCAGCTGTGGCCATG
AGGCTGGACCTCCGCGATCTGCAGCGGCACCTCCGCTTCCAGGTGCTGGCTGCAGGATTC AACCTCCCGG
AGGAGGAGGAGGAAGAGGAGGAGGAGGAGGAGGAGGAAGGGGCTGCTCCCAGGGGCACTGGGCAG
CGCCTTACAGGGCCCGCCAGGTGTCCTGGCCCCAGCTCCTCTCACCTACCGCTGCTGCACTCCTTG
GAGCTCGTCTTATCTCGGGCCGTGCGGGAGTTGCTGCTGCTGTCCAAGGCTGGGCACTCAGTCTGGCCCT
TGGGGTCCCAACATTGAGCCCCAGCCC

ACGCGTACGCGGCCGCTCGAGCAGAACTCATCTCAGAAGAGGATCTGGCAGCAAATGATATCCTGGATT
ACAAGGATGACGACGATAAGGTTTAA



[View online »](#)

Protein Sequence: >RC209337 protein sequence
Red=Cloning site Green=Tags(s)

MGQTAGDLGWRLSLLLLPLLLVQAGVWGFP PPPGRPQLSLQELRREFTVSLHLARKLLAEVRGQAHRF AE
 SHLPGVNL YLLPLGEQLPDVSLTFQAWRRLSDPERLCFISTTLQPFHALLGGLGTQGRWNTMERMQLWAM
 RLDLRDLQRHLRFQVLAAGFNLPEEEEEEEEEEEEEERKGLLPGALGSALQGPAQVSWPQLLSTYRLLHSL
 ELVLSRAVRELLLLSKAGHSVWPLGFPTLSPQP

TRTRPLEQKLISEEDLAANDILDYKDDDDKV

Chromatograms: https://cdn.origene.com/chromatograms/mk6035_g02.zip

Restriction Sites: SgfI-MluI

Cloning Scheme:

Cloning sites used for ORF Shuttling:



* The last codon before the Stop codon of the ORF

ACCN: NM_145659

ORF Size: 729 bp

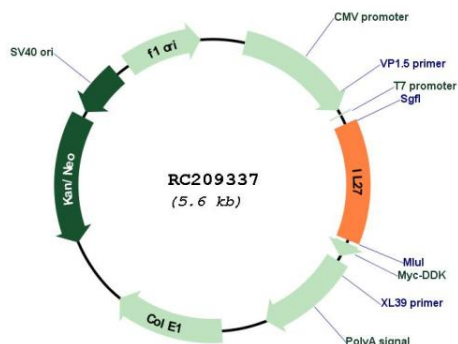
OTI Disclaimer: The molecular sequence of this clone aligns with the gene accession number as a point of reference only. However, individual transcript sequences of the same gene can differ through naturally occurring variations (e.g. polymorphisms), each with its own valid existence. This clone is substantially in agreement with the reference, but a complete review of all prevailing variants is recommended prior to use. [More info](#)

OTI Annotation: This clone was engineered to express the complete ORF with an expression tag. Expression varies depending on the nature of the gene.

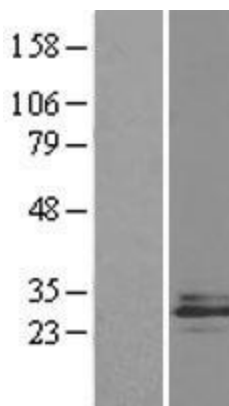
Components: The ORF clone is ion-exchange column purified and shipped in a 2D barcoded Matrix tube containing 10ug of transfection-ready, dried plasmid DNA (reconstitute with 100 ul of water).

Reconstitution Method:	<ol style="list-style-type: none">1. Centrifuge at 5,000xg for 5min.2. Carefully open the tube and add 100ul of sterile water to dissolve the DNA.3. Close the tube and incubate for 10 minutes at room temperature.4. Briefly vortex the tube and then do a quick spin (less than 5000xg) to concentrate the liquid at the bottom.5. Store the suspended plasmid at -20°C. The DNA is stable for at least one year from date of shipping when stored at -20°C.
Note:	Plasmids are not sterile. For experiments where strict sterility is required, filtration with 0.22um filter is required.
RefSeq:	<u>NM_145659.3, NP_663634.2</u>
RefSeq Size:	1044 bp
RefSeq ORF:	732 bp
Locus ID:	246778
UniProt ID:	<u>Q8NEV9</u>
Cytogenetics:	16p12.1-p11.2
Protein Families:	Druggable Genome, Transmembrane
MW:	27.5 kDa
Gene Summary:	The protein encoded by this gene is one of the subunits of a heterodimeric cytokine complex. This protein is related to interleukin 12A (IL12A). It interacts with Epstein-Barr virus induced gene 3 (EBI3), a protein similar to interleukin 12B (IL12B), and forms a complex that has been shown to drive rapid expansion of naive but not memory CD4(+) T cells. The complex is also found to synergize strongly with interleukin 12 to trigger interferon gamma (IFNG) production of naive CD4(+) T cells. The biological effects of this cytokine are mediated by the class I cytokine receptor (WSX1/TCRR). [provided by RefSeq, Jul 2008]

Product images:



Circular map for RC209337



Western blot validation of overexpression lysate (Cat# [LY403437]) using anti-DDK antibody (Cat# [TA50011-100]). Left: Cell lysates from untransfected HEK293T cells; Right: Cell lysates from HEK293T cells transfected with RC209337 using transfection reagent MegaTran 2.0 (Cat# [TT210002]).