

Product datasheet for **RC209331**

NOTUM (NM_178493) Human Tagged ORF Clone

Product data:

| | |
|---------------------------|--|
| Product Type: | Expression Plasmids |
| Product Name: | NOTUM (NM_178493) Human Tagged ORF Clone |
| Tag: | Myc-DDK |
| Symbol: | NOTUM |
| Synonyms: | hNOTUM |
| Mammalian Cell Selection: | Neomycin |
| Vector: | pCMV6-Entry (PS100001) |
| E. coli Selection: | Kanamycin (25 ug/mL) |



[View online »](#)

ORF Nucleotide
Sequence:

>RC209331 ORF sequence
Red=Cloning site Blue=ORF Green=Tags(s)

TTTTGTAATACGACTCACTATAGGGCGGCCGGAATTCGTCGACTGGATCCGGTACCGAGGAGATCTGCC
GCCGCGATCGCC

ATGGCGCAAGTCAAGAGCCTGGCGCAGTCCCTGTACCCCTGCTCCGCGCAGCAGTCAACGAGGACCTGC
GCCTGCACCTCCTACTCAACACCTCGGTGACCTGCAACGACGGCAGCCCCGCGGCTACTACCTGAAGGA
GTCAGAGGGCAGCCGGCGGTGGCTCCTCTTCTGGAAGGCGGCTGGTACTGCTTCAACCGGAGAAGTGC
GACTCCAGATACGACACCATGCGGCGCCTCATGAGCTCCCGGACTGGCCGCGCACTCGCACAGGCACAG
GGATCCTGTCTCACAGCCGGAGGAGAACCCTACTGGTGAACGCAAACATGGTCTTATCCCCTACTG
CTCCAGTGATGTTGGAGCGGGCTTCAAGTCTGAGAAGAAGGAGTACGCCTTATGGGCGCCCTC
ATCATCCAGGAGGTGGTGGGGAGCTTCTGGGAGAGGGCTGAGCGGGCCAAGGTGCTGCTGCTGGCCG
GGAGCAGCGCGGGGGCACCAGGGTCTCTGAATGTGGACCGTGTGGCTGAGCAGCTGGAGAAGCTGGG
CTACCCAGCCATCCAGGTGCGAGGCCTGGCTGACTCCGGTGGTTCCTGGACAACAAGCAGTATCGCCAC
ACAGACTGCGTCGACACGATCACGTGCGCGCCACGGAGGCCATCCGCCGTGGCATCAGGTACTGGAACG
GGTGGTCCCGGAGCGCTGCCGACGCCAGTTCAGGAGGGCGAGGAGTGGAACTGCTTCTTTGGTACAA
GGTCTACCCGACCTGCGCTGCCCTGTGTTGTTGTTGAGGAGGACAGCTGACGGTG
GACAACGTGCACCTGACGGGGCAGCCGGTGCAGGAGGGCTGCGGCTGTACATCCAGAACCTCGGCCGCG
AGCTGCGCCACACTCAAGGAGTGGCGGCCAGCTTTCGCCCGCCTGCCTCTCCCATGAGATCATCAT
CCGGAGCCACTGGACGGATGTCCAGGTGAAGGGGACGTCGCTGCCCGAGCACTGCACTGCTGGGACAGG
AGCCTCCATGACAGCCACAAGGCCAGCAAGACCCCTCAAGGGCTGCCCGTCCACCTGGTGGACAGCT
GCCCTGGCCCACTGCAACCCCTCATGCCCCACCGTCCGAGACCAGTTCACGGGCAAGAGATGAACGT
GGCCAGTTCCTCATGCACATGGGCTTCGACATGCAGACGGTGGCCAGCCGAGGACTGGAGCCAGT
GAGCTGCTGGGGATGCTGAGCAACGGAAGC

ACGCGTACGCGGCCGCTCGAGCAGAACTCATCTCAGAAGAGGATCTGGCAGCAAATGATATCCTGGATT
ACAAGGATGACGACGATAAGGTTTAA

Protein Sequence:

>RC209331 protein sequence
Red=Cloning site Green=Tags(s)

MAQVKSALQSLYPCSAQQLNEDLRLHLLNLSVTCNDGSPAGYYLKESRGSRWLLFLEGGWYCFNRENC
DSRYDTMRRLMSSRDWPRTRTGILSSQPEENPYWWANMVFIPYCSSDVWSGASSKSEKNEYAFMGAL
IIQEVVRELLGRGLSGAKVLLLAGSSAGGTGVLNVDRAEQLEKLGYPATQVRGLADSGWFLDNKQYRH
TDCVDTITCAPTEAIRRGIRYWNGVVPERCRRQFQEGEEWNCFFGYKVYPTLRCPVFVQWLFDEAQLTV
DNVHLTGQPVQGLRLYIQNLGRELRLKDVPAFAPACL SHEIIIRSHWTDVQVKGTSPLRALHCWDR
SLHDSHKASKTPLKGCPLVHLVDSWPWPCNPSCPTVRDQFTGQEMNVAQFLMHMGFDMQTVAQPQGLEPS
ELLGMLSNGS

TRTRPLEQKLISEEDLAANDILDYKDDDDKV

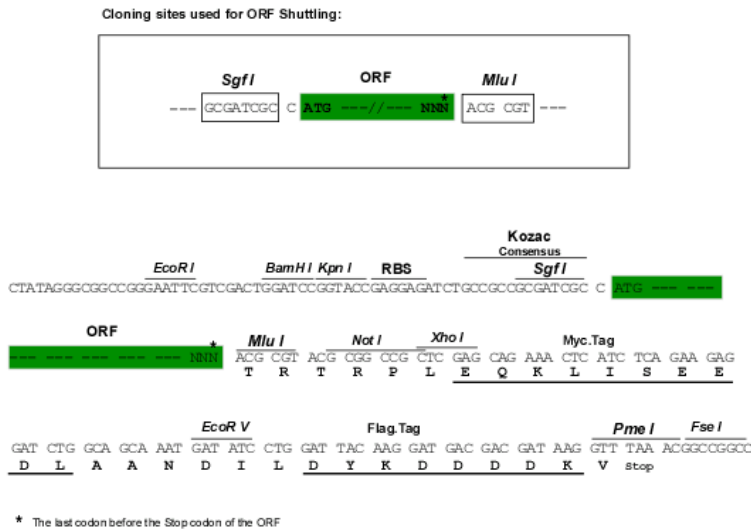
Chromatograms:

https://cdn.origene.com/chromatograms/mk6512_h05.zip

Restriction Sites:

Sgfl-Mlul

Cloning Scheme:



ACCN: NM_178493

ORF Size: 1290 bp

OTI Disclaimer: Due to the inherent nature of this plasmid, standard methods to replicate additional amounts of DNA in E. coli are highly likely to result in mutations and/or rearrangements. Therefore, OriGene does not guarantee the capability to replicate this plasmid DNA. Additional amounts of DNA can be purchased from OriGene with batch-specific, full-sequence verification at a reduced cost. Please contact our customer care team at custsupport@origene.com or by calling 301.340.3188 option 3 for pricing and delivery.

The molecular sequence of this clone aligns with the gene accession number as a point of reference only. However, individual transcript sequences of the same gene can differ through naturally occurring variations (e.g. polymorphisms), each with its own valid existence. This clone is substantially in agreement with the reference, but a complete review of all prevailing variants is recommended prior to use. [More info](#)

OTI Annotation: This clone was engineered to express the complete ORF with an expression tag. Expression varies depending on the nature of the gene.

Components: The ORF clone is ion-exchange column purified and shipped in a 2D barcoded Matrix tube containing 10ug of transfection-ready, dried plasmid DNA (reconstitute with 100 ul of water).

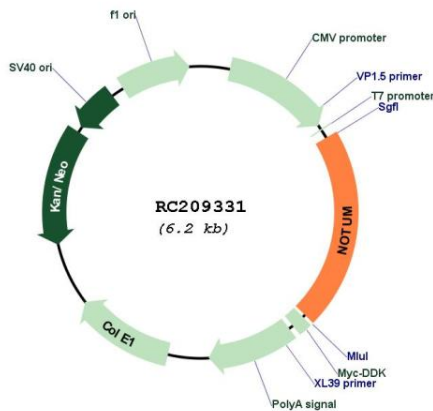
- Reconstitution Method:
1. Centrifuge at 5,000xg for 5min.
 2. Carefully open the tube and add 100ul of sterile water to dissolve the DNA.
 3. Close the tube and incubate for 10 minutes at room temperature.
 4. Briefly vortex the tube and then do a quick spin (less than 5000xg) to concentrate the liquid at the bottom.
 5. Store the suspended plasmid at -20°C. The DNA is stable for at least one year from date of shipping when stored at -20°C.

RefSeq: [NM_178493.4](#)

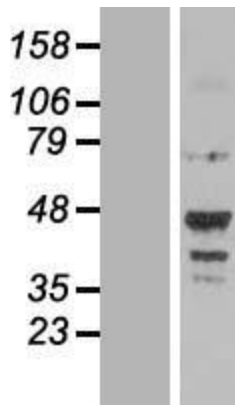
RefSeq Size: 2281 bp
RefSeq ORF: 1491 bp
Locus ID: 147111
UniProt ID: [Q6P988](#)
Cytogenetics: 17q25.3
MW: 48.6 kDa

Gene Summary: Carboxylesterase that acts as a key negative regulator of the Wnt signaling pathway by specifically mediating depalmitoleoylation of WNT proteins. Serine palmitoleoylation of WNT proteins is required for efficient binding to frizzled receptors (PubMed:25731175).
 [UniProtKB/Swiss-Prot Function]

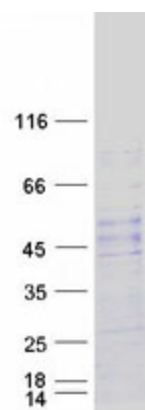
Product images:



Circular map for RC209331



Western blot validation of overexpression lysate (Cat# [LY405887]) using anti-DDK antibody (Cat# [TA50011-100]). Left: Cell lysates from untransfected HEK293T cells; Right: Cell lysates from HEK293T cells transfected with RC209331 using transfection reagent MegaTran 2.0 (Cat# [TT210002]).



Coomassie blue staining of purified NOTUM protein (Cat# [TP309331]). The protein was produced from HEK293T cells transfected with NOTUM cDNA clone (Cat# RC209331) using MegaTran 2.0 (Cat# [TT210002]).