

Product datasheet for **RC209324**

VWA1 (NM_022834) Human Tagged ORF Clone

Product data:

Product Type:	Expression Plasmids
Product Name:	VWA1 (NM_022834) Human Tagged ORF Clone
Tag:	Myc-DDK
Symbol:	VWA1
Synonyms:	WARP
Mammalian Cell Selection:	Neomycin
Vector:	pCMV6-Entry (PS100001)
E. coli Selection:	Kanamycin (25 ug/mL)



[View online »](#)

ORF Nucleotide Sequence:

>RC209324 ORF sequence
 Red=Cloning site Blue=ORF Green=Tags(s)

TTTTGTAATACGACTCACTATAGGGCGGCCGGAATTCGTCGACTGGATCCGGTACCGAGGAGATCTGCC
 GCC**CGCATCGCC**

ATGCTCCCTGGACGGCGCTCGGCTGGCCTGAGCTTGGGCTGGCGCTGGCGGGAGCGGCGGGAGC
 GCGGTCCACCAGCATCAGCCCCCGAGGGGACCTGATGTTCTGTGACAGCTCAGCCAGCGTCTCTCA
 CTACGAGTTCTCCCGGTTCCGGGAGTTTGTGGGCAGCTGGTGGCTCCACTGCCCTGGGCACCGGGGCC
 CTGCGTGCCAGTCTGGTGCACGTGGCAGTCGGCCATACACCGAGTTCCCTTCGGCCAGCACAGCTCGG
 GTGAGGCTGCCAGGATGCGGTGCGTGCTTCTGCCAGCGCATGGGTGACACCCACACTGGCCTGGCGCT
 GGTCTATGCCAAGGAACAGCTGTTTGTGAAGCATCAGGTGCCCGCCAGGGGTGCCAAAGTGTGGT
 TGGGTGACAGATGGCGGCTCCAGCGACCCTGTGGCCCCCATGCAGGAGCTCAAGGACCTGGGCGTCA
 CCGTGTTCAATTGTCAGCACCGGCCGAGGCAACTTCTGGAGCTGTCAGCCGCTGCCTCAGCCCCTGCCGA
 GAAGCACCTGCACTTTGTGGACGTGGATGACCTGCACATCATTGTCCAAGAGCTGAGGGGCTCCATTCTC
 GACGCGATGCGGGCCGAGCAGCTCCATGCCACGGAGATCAGTCCAGCGGCTTCCGCTGGCCTGGCCAC
 CCCTGCTGACCGCAGACTCGGGTACTATGTGCTGGAGCTGGTGGCCAGCGCCAGCCGGGGGCTGCAAG
 ACGCCAGCAGCTGCCAGGGAACGCCACGGACTGGATCTGGGCCGGCTCGACCCGGACACGGACTACGAC
 GTGGCGCTAGTGCTGAGTCCAACGTGCGCCTCCTGAGGCCAGATCCTGCGGGTGGCAGCGGGCCCG
 GTGAGGACAGGGCCGGGGCTTCGGGCCCGGAGTCGGGGCTGGGCCGGCCCCACGCAGCTCGCCGCCCT
 CCCCAGCCAGAGAGGCCGGCCAGAGCGCATCGTCACTCCACGCCCGCCGCGCAGCTCCGCGTG
 AGTTGGCCCCAGCGCTGGCTCAGCCGCGGCTCGGCTACCACGTGCAGTTCGGGCCGCTGGCGGGCCG
 GGGAGGCGCAGCGGTTGGAGGTGCCCGCGGCGCAACTGCACCACGCTGCAGGGCTGGCGCCGGCCAC
 CGCTACCTGGTGACCGTGACCGCCGCTTCCGCTCGGGCCGCGAGAGCGCGCTGTCCGCCAAGGCTGC
 ACGCCGACGGCCGCGCCCGCCACGCCCGTGGCCCGGCCGACCCGGGGACCGCCAGCCGTG
 AGCCG

ACGCGTACGCGGCCGCTCGAGCAGAACTCATCTCAGAAGAGGATCTGGCAGCAAATGATATCTGGATT
 ACAAGGATGACGACGATAAGGTTTAA

Protein Sequence:

>RC209324 protein sequence
 Red=Cloning site Green=Tags(s)

MLPWTALGLALSLRLALARSGAERGPPASAPRGDLMFLLDSSASVSHYEF SRVREFVQQLVAPLPLGTGA
 LRASLVHVGSRPYTEFPFGQHSSGEAAQDAVRASAQRMGDHTGLALVYAKEQLFAEASGARPGVPKVLV
 WVTDDGSSDPVGPMPQELKDLGTVFIVSTGRGNFLELSAAASAPAEKHLHFVDVDDLHIIVQELRGSIL
 DAMRPQQLHATEITSSGFRLAWPPLL TADSGYVLELVPSAQPGAARRQQLPGNATDWIWAGLDPD TDYD
 VALVPESNVRLLRPQILRVTRPGEAGPGASGAPPTQLAALPAPEEAGPERIVI SHARPRSLRV
 SWAPALGSAAALGYHVQFGPLRGGEAQRVEVPAGRNCTTLQGLAPGTAYLVTVTA AFRSGRESALSAKAC
 TPDGPRRPRPVPRAPTPTASREP

TRTRPLEQKLISEEDLAANDILDYKDDDDKV

Chromatograms:

https://cdn.origene.com/chromatograms/mk6833_b05.zip

Restriction Sites:

Sgfl-Mlul

Cloning Scheme:


ACCN: NM_022834

ORF Size: 1335 bp

OTI Disclaimer: The molecular sequence of this clone aligns with the gene accession number as a point of reference only. However, individual transcript sequences of the same gene can differ through naturally occurring variations (e.g. polymorphisms), each with its own valid existence. This clone is substantially in agreement with the reference, but a complete review of all prevailing variants is recommended prior to use. [More info](#)

OTI Annotation: This clone was engineered to express the complete ORF with an expression tag. Expression varies depending on the nature of the gene.

Components: The ORF clone is ion-exchange column purified and shipped in a 2D barcoded Matrix tube containing 10ug of transfection-ready, dried plasmid DNA (reconstitute with 100 ul of water).

Reconstitution Method:

1. Centrifuge at 5,000xg for 5min.
2. Carefully open the tube and add 100ul of sterile water to dissolve the DNA.
3. Close the tube and incubate for 10 minutes at room temperature.
4. Briefly vortex the tube and then do a quick spin (less than 5000xg) to concentrate the liquid at the bottom.
5. Store the suspended plasmid at -20°C. The DNA is stable for at least one year from date of shipping when stored at -20°C.

RefSeq: [NM_022834.5](#)

RefSeq Size: 4659 bp

RefSeq ORF: 1338 bp

Locus ID: 64856

UniProt ID: [Q6PCB0](#)

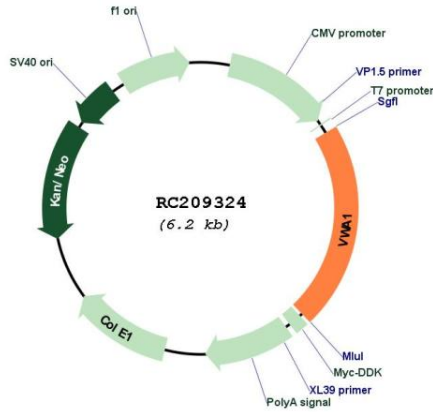
Cytogenetics: 1p36.33

Domains: FN3

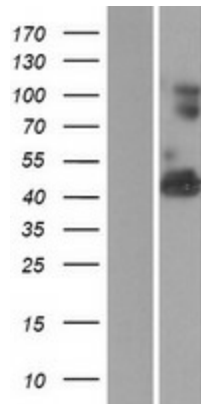
MW: 46.8 kDa

Gene Summary: VWA1 belongs to the von Willebrand factor (VWF; MIM 613160) A (VWFA) domain superfamily of extracellular matrix proteins and appears to play a role in cartilage structure and function (Fitzgerald et al., 2002 [PubMed 12062410]).[supplied by OMIM, Nov 2010]

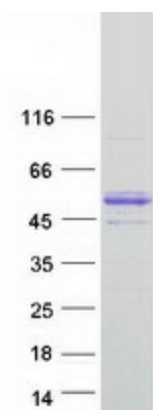
Product images:



Circular map for RC209324



Western blot validation of overexpression lysate (Cat# [LY411530]) using anti-DDK antibody (Cat# [TA50011-100]). Left: Cell lysates from untransfected HEK293T cells; Right: Cell lysates from HEK293T cells transfected with RC209324 using transfection reagent MegaTran 2.0 (Cat# [TT210002]).



Coomassie blue staining of purified VWA1 protein (Cat# [TP309324]). The protein was produced from HEK293T cells transfected with VWA1 cDNA clone (Cat# RC209324) using MegaTran 2.0 (Cat# [TT210002]).