

Product datasheet for **RC209323**

FAM171B (NM_177454) Human Tagged ORF Clone

Product data:

Product Type:	Expression Plasmids
Product Name:	FAM171B (NM_177454) Human Tagged ORF Clone
Tag:	Myc-DDK
Symbol:	FAM171B
Synonyms:	KIAA1946
Mammalian Cell Selection:	Neomycin
Vector:	pCMV6-Entry (PS100001)
E. coli Selection:	Kanamycin (25 ug/mL)



[View online »](#)

ORF Nucleotide Sequence:

>RC209323 ORF sequence
 Red=Cloning site Blue=ORF Green=Tags(s)

TTTTGTAATACGACTCACTATAGGGCGGCCGGGAATTCGTCGACTGGATCCGGTACCGAGGAGATCTGCC
 GCC**CGGATCGCC**

ATGGCGAGGCTCTGCCGGCGTGTCCCTGCACCCTGCTTCTCGGCCTGGCCGTGGTGTCTGCTGAAAGCGC
 GGCTGGTCCCGCGGCCCCAGAGCGGAACTCAGCCGCTCCGACCTCAGCCTCATCCAACAGCAGCAGCA
 GCAGCAGCAGCAACAACAACAACAACAGCAAAAGCAGCTGGAGGAGGCTGAGGAGGAGGACAGAG
 GTGCCCTGGGGCAACCTCCACCTTGACGGTTCAGTGTCTGTATTTATGTTGAAAGTCCAGGTGAATGACA
 TCATCAGTCGTCAGTACCTGAGCCAAGCAGTTGTAGAAGTGTGTTGTTAACTACACGAAGCAAAATCCAC
 AGTAACTAAAAGCAATGGAGCAGTGTGATAAAAGTACCCTACAAATTAGGACTTAGTAACTATTATT
 GCTTACAAAGATGGCTACGTGTTGACCCCTCTGCCTTGAAAACAGAGAATGCCAATATATTCATCAG
 TTACACTTTCAGTGTCCCGCAAAGCCAAGCAAAATATATGGCTATTTGAAGACACTGTTTTAATTACTGG
 AAAATTAGCTGATGCCAAGTCTCAACCAAGTGTTCAGTTTTCAAAGCCTTAATTAACCTCCTGACAAC
 CATCATATTAGCAACGTTACTGGCTATCTTACAGTTCTACAACAGTTTTTGAAAAGTGGACAATTTCTGC
 ATACAACCTGGAATTACTCTCAATAAACCAGTTTTTGAAAACATTGAATTGACTCCTCTTGCTGCAATATG
 TGTGAAAATATATTCTGGAGGAAAAGAACTAAAGGTCAATGGCTCTATTCAAGTTTCTTCTCTCTCTA
 CGTCTGAATGATATAAGTGCAGGGGATCGCATACCTGCTTGACATTTGATATGAACACAGGTGCTTGGAA
 TAAATCATGGTCGGGGAATGGTCAAGGAACATAACAATCATTTAATCTGGACATATGATGCACCACATTT
 GGGGACTGGATAGCAGCTCCACTTCCAGGAAC TAGAGGTT CAGGTATAAATGAAGATTTCAAGGACATA
 ACTGCCTACCACACAGTGTCTTACAGCCATATTAGGAGGAACAATAGTCATTGTCATTGGATTTTTTG
 CTGTACTACTTTGTTATTGCAGGGACAAGTGTGGTACTCCACAGAAAAGAGAAAAGAAATACACTAACT
 TGAGGTCTCAAGAGAGACCAGACAACCTCAACAACACACATAAAATCATATCAGTACAGTTAAAGTTGCA
 TTAAGCTGAGGACAAGTCGCAGTTATTCATGCCCCAAAACCTCCTCATATAGTCCTCAGAAAAGGAAC
 CATCAAAGGCAGAAAAGAGAAAAGAGTTTCCATGGTAAAAACTCGGGACGATTTTAAAACTACAATGA
 AGATGTTTCATTCTATCAGTCAATCAAATAATTACTCAAGAAACCAACACAGTCTTTGGAGCCCAAT
 GTAGGGTCCAACAACCTAAACATATTAACAACAATCTATCTTCATCTCTAGGTGATGCTCAAGATGAAA
 AGAGGTATCTCACAGTAATGAGGAGGCGTATGGGCGTCCCATATTCTGAACAGCTTATGCATATTTA
 CAGCCAACCCATTGCCATCCTTCAAACATCTGACCTTTTCTCCACACCGGAACAATTACATACTGCTAAG
 TCAGCTACTTTGCCAAGAAAGGGACAGTTAGTCTATGGCCAATTGATGGAACCAGTAAATCGAGAGAACT
 TTACGCAGACCTTGCCAAAATGCCAATTCATTCCCATGCACAGCCCCAGATGCCAGGGGAGAGGATAT
 CATACTTGAAGGTCAACAGAGCCTGCCATCCCAGGCTTCAGATTGGAGCCGATACTCAAGCAGCTTACTG
 GAATCCGCTCTGTCTCTGGAACACTAAATGAGGCTGTTGTAATGACTCCATTTTCATCGGAACTTCAAG
 GAATTTGAGAACAGACCCTCCTGGAGCTGTCCAAGGAAAGCCCTCCCGCATCCCAGAGCCTGGTTTGT
 GTCTCTTGATGGAAGCCAGTTGCACAAGTGGGCACTCCTTTATAGACCTGAAAAGGGCAAGAGAACC
 CAGAGCAATGACACCAGTCTGGACTCTGGGGTGGACATGAATGAGCTTCACTCAAGTAGAAAAGCTCGAGA
 GGGAGAAAACATTCATCAAAGCATGCATCAGCCCAAGATCCTTTACTTAGAAGATTTAGACCTAAGCAG
 CAGTGAGAGTGGAAACCACCGTCTGTTCCCTGAAGACCCAGCTTAAGGCACATCCTAGATGGAGGGAGT
 GGAGTGATCATGGAGCACCTGGAGAAGAGTCCGCAAGGAAGGAAAAGCACTGTTGAAGATTTTGAAGCTA
 ATACATCCCCACTAAAAGAAGGGGACAGACCACCTAGCCAAAAGAGATAGCAAGACTAACATCTGGAA
 GAAGCGAGAGGAACGCCACTGATTCCATAAAT

ACGCGTACGCGGCCGCTCGAGCAGAACTCATCTCAGAAGAGGATCTGGCAGCAATGATATCCTGGATT
 ACAAGGATGACGACGATAAGGTTTAA

Protein Sequence:

>RC209323 protein sequence

Red=Cloning site Green=Tags(s)

MARLCRRVPCTLLLGLAVVLLKARLVPAARAELSRSDL SLIIQQQQQQQQQQQQQQKQLEEEEEEERTE
VPGATSTLTVPVSFVFLKQVNDIISRQYLSQAVVEVFVNYTKNSTVTKSNGAVLIKVPYKLGSLTII
AYKDGYYL TPLPWKTRMPIYSSVTL SLFPQSQANIWL FEDTVLITGKLADAKSQPSVQFSKALIKLPDN
HHISNVTGYLTVLQQFLKVDNLFHTTGITLNKPGFENIELTPLAAICVKIYSGGKELKVNQSIQVSLPLL
RLNDISAGDRIPAWTFDMNTGAWINHGRGMVKEHNNHLIWTYDAPHLGYWIAAPLPGTRGSGINEDSKDI
TAYHTVFLTAILGGTIVIVIGFFAVLLCYCRDKCGTPQKRERNITKLEVLKRDQTTSTTHINHISTVKVA
LKAEDKSQLFNAKNSSYSPQKKEPSKAETEERVSMVKTRDDFKIYNEDVSFLSVNQNNYSRNPTQSLEPN
VGSKQPKHINNNLSSSLGDAQDEKRYLTGNEEAYGRSHIPEQLMHIYSQPIAILQTSDFSTPEQLHTAK
SATLPRKGQLVYGQLMPEVNRNFQTLPKMPIHSHAQPPDAREEDIILEGQQLPSQASDWSRYSSLL
ESVSVPGTLNEAVVMTPFSSSELQGISEQTLLELSKGKPSHPRAWFVSLDGKPVAVRHSFIDLKKGKRT
QSNDSLDSGVMNELHSSRKLEREKTFIKSMHQPKILYLEDLSSSESGTTVCSPEPALRHILDGGS
GVIMEHPGEEESPGRKSTVEDFEANTSPKRRGRPPLAKRDSKTIWKKREERPLIPIN

TRTRPLEQKLI SEEDLAANDILDYKDDDDKV

Chromatograms:

https://cdn.origene.com/chromatograms/mk6693_c05.zip

Restriction Sites:

Sgfl-Mlul

Cloning Scheme:



ACCN: NM_177454

ORF Size: 2484 bp

OTI Disclaimer: The molecular sequence of this clone aligns with the gene accession number as a point of reference only. However, individual transcript sequences of the same gene can differ through naturally occurring variations (e.g. polymorphisms), each with its own valid existence. This clone is substantially in agreement with the reference, but a complete review of all prevailing variants is recommended prior to use. [More info](#)

OTI Annotation: This clone was engineered to express the complete ORF with an expression tag. Expression varies depending on the nature of the gene.

Components: The ORF clone is ion-exchange column purified and shipped in a 2D barcoded Matrix tube containing 10ug of transfection-ready, dried plasmid DNA (reconstitute with 100 ul of water).

Reconstitution Method:

1. Centrifuge at 5,000xg for 5min.
2. Carefully open the tube and add 100ul of sterile water to dissolve the DNA.
3. Close the tube and incubate for 10 minutes at room temperature.
4. Briefly vortex the tube and then do a quick spin (less than 5000xg) to concentrate the liquid at the bottom.
5. Store the suspended plasmid at -20°C. The DNA is stable for at least one year from date of shipping when stored at -20°C.

RefSeq: [NM_177454.2](#), [NP_803237.2](#)

RefSeq Size: 3557 bp

RefSeq ORF: 2481 bp

Locus ID: 165215

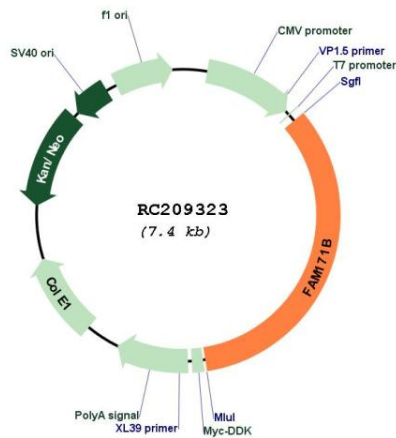
UniProt ID: [Q6P995](#)

Cytogenetics: 2q32.1

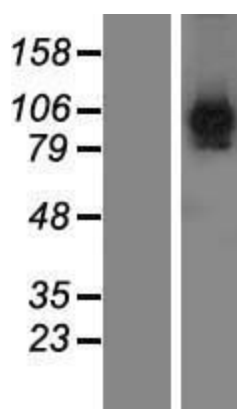
Protein Families: Transmembrane

MW: 92.5 kDa

Product images:



Circular map for RC209323



Western blot validation of overexpression lysate (Cat# [LY406170]) using anti-DDK antibody (Cat# [TA50011-100]). Left: Cell lysates from untransfected HEK293T cells; Right: Cell lysates from HEK293T cells transfected with RC209323 using transfection reagent MegaTran 2.0 (Cat# [TT210002]).