

Product datasheet for RC209320

TRA16 (NR2C2AP) (NM_176880) Human Tagged ORF Clone

Product data:

Product Type: Expression Plasmids
Product Name: TRA16 (NR2C2AP) (NM_176880) Human Tagged ORF Clone
Tag: Myc-DDK
Symbol: TRA16
Synonyms: TRA16
Mammalian Cell Selection: Neomycin
Vector: pCMV6-Entry (PS100001)
E. coli Selection: Kanamycin (25 ug/mL)
ORF Nucleotide Sequence: >RC209320 ORF sequence
 Red=Cloning site Blue=ORF Green=Tags(s)

TTTGTGTAATACGACTCACTATAGGGCGGCCGGAATTCGTCGACTGGATCCGGTACCGAGGAGATCTGCC
 GCCCGCATCGCC

ATGACCCACTCTTTGGTTTGTCCAGAGACAGTGAGCAGGGTGAGTTCAGTGCTGAATCGCAACACTCGGC
 AGTTTGGAAAAAACATCTTTTCGACCAGGATGAGGAGACATGTTGGAACAGACCAGGGCCCCCTCCCA
 GTGGGTGACGCTGGAGTTTCCCCAGCTCATCCGTGTCTCCAGCTGCAGATCCAGTTTCAGGGTGGCTTC
 TCCAGTCGCCGGGGCTGCCTGGAAGTTACAGGGCACTCAGGCTCTCCACAAGATTGTAGATTTCTACC
 CTGAGGACAACAACTCGCTTCAGACTTTCCCATACCAGCTGCTGAAGTGGACCGGCTGAAGGTGACGTT
 TGAGGATGCCACTGACTTTTTTGCCGTGTGGTCATCTACCACCTGCGGGTGCTTGGGGAGAAGGTG

ACGCGTACGCGGCCGCTCGAGCAGAACTCATCTCAGAAGAGGATCTGGCAGCAATGATATCCTGGATT
 ACAAGGATGACGACGATAAGGTTTAA

Protein Sequence: >RC209320 protein sequence
 Red=Cloning site Green=Tags(s)

MTHSLVCPETVSRVSSVLNRNTRQFGKKHLFDQDEETCWNSDQGPSQWVLEFPQLIRVSQLQIQFQGGF
 SSRRGCLEGSQGTQALHKIVDFYPEDNNLSLQTFPIPAAEVDRLKVTFFEDATDFGRVVIYHLRVLGEKV

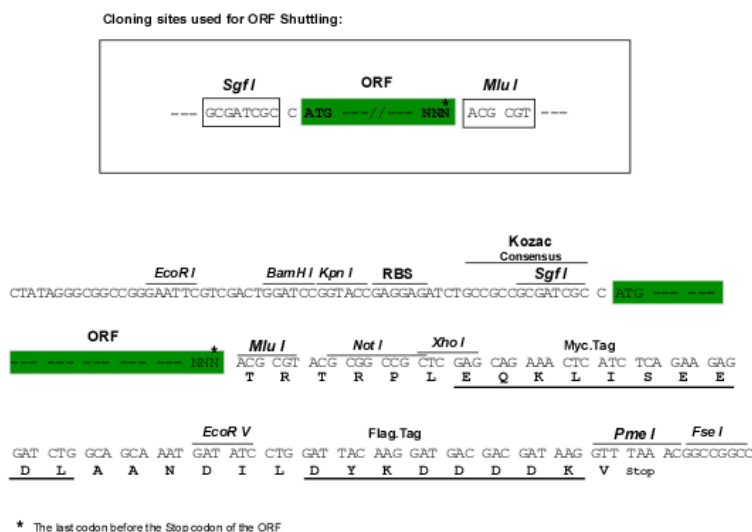
TRTRPLEQKLISEEDLAANDILDYKDDDDKV

Chromatograms: https://cdn.origene.com/chromatograms/mk6345_g08.zip

Restriction Sites: SgfI-MluI



[View online »](#)

Cloning Scheme:


ACCN: NM_176880

ORF Size: 417 bp

OTI Disclaimer: The molecular sequence of this clone aligns with the gene accession number as a point of reference only. However, individual transcript sequences of the same gene can differ through naturally occurring variations (e.g. polymorphisms), each with its own valid existence. This clone is substantially in agreement with the reference, but a complete review of all prevailing variants is recommended prior to use. [More info](#)

OTI Annotation: This clone was engineered to express the complete ORF with an expression tag. Expression varies depending on the nature of the gene.

Components: The ORF clone is ion-exchange column purified and shipped in a 2D barcoded Matrix tube containing 10ug of transfection-ready, dried plasmid DNA (reconstitute with 100 ul of water).

Reconstitution Method:

1. Centrifuge at 5,000xg for 5min.
2. Carefully open the tube and add 100ul of sterile water to dissolve the DNA.
3. Close the tube and incubate for 10 minutes at room temperature.
4. Briefly vortex the tube and then do a quick spin (less than 5000xg) to concentrate the liquid at the bottom.
5. Store the suspended plasmid at -20°C. The DNA is stable for at least one year from date of shipping when stored at -20°C.

RefSeq: [NM_176880.6](#)

RefSeq Size: 1322 bp

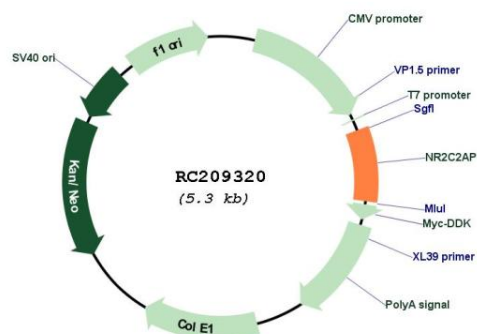
RefSeq ORF: 420 bp

Locus ID: 126382

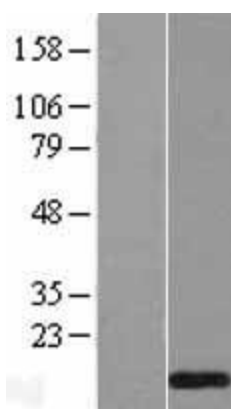
UniProt ID: [Q86WQ0](#)

Cytogenetics:	19p13.11
Protein Families:	Druggable Genome
MW:	15.9 kDa
Gene Summary:	May act as a repressor of NR2C2-mediated transactivation by suppressing the binding between NR2C2/TR4 and the TR4-response element in target genes.[UniProtKB/Swiss-Prot Function]

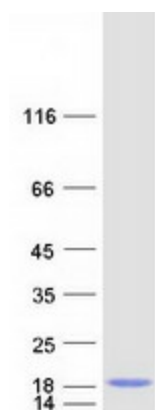
Product images:



Circular map for RC209320



Western blot validation of overexpression lysate (Cat# [LY406134]) using anti-DDK antibody (Cat# [TA50011-100]). Left: Cell lysates from untransfected HEK293T cells; Right: Cell lysates from HEK293T cells transfected with RC209320 using transfection reagent MegaTran 2.0 (Cat# [TT210002]).



Coomassie blue staining of purified NR2C2AP protein (Cat# [TP309320]). The protein was produced from HEK293T cells transfected with NR2C2AP cDNA clone (Cat# RC209320) using MegaTran 2.0 (Cat# [TT210002]).