

## Product datasheet for **RC209319**

### **BMPER (NM\_133468) Human Tagged ORF Clone**

#### **Product data:**

Product Type:	Expression Plasmids
Product Name:	BMPER (NM_133468) Human Tagged ORF Clone
Tag:	Myc-DDK
Symbol:	BMPER
Synonyms:	CRIM3; CV-2; CV2
Mammalian Cell Selection:	Neomycin
Vector:	pCMV6-Entry (PS100001)
E. coli Selection:	Kanamycin (25 ug/mL)



[View online »](#)

**ORF Nucleotide Sequence:**

>RC209319 ORF sequence  
 Red=Cloning site Blue=ORF Green=Tags(s)

TTTTGTAATACGACTCACTATAGGGCGGCCGGAATTCGTCGACTGGATCCGGTACCGAGGAGATCTGCC  
 GCC**CGCATCGCC**

ATGCTCTGGTTCTCCGGCTCGGGCTCTGGCTGAGCGTTACTGCCGCCGCTCGCCTGGGATTACGTGCT  
 GGTCTTGCTGCTACTCAATTGCTCGGGGTCCCATGTCTCTGGCTTCTCCTTCTTGACAGGTTCTGT  
 TGCAAAATGTGAAAATGAAGGTGAAGTCCCTCCAGATTCCATTTATCACAGACAACCCCTTGATAATGTGT  
 GTCTGCTTGAACAAGGAAGTGACACGTAAGAGAGAGAAGTGCCCCGTGCTGTCCCGAGACTGTGCCCTGG  
 CCATCAAGCAGAGGGGAGCCTGTTGTGAACAGTGCAAAGGTTGCACCTATGAAGGAAATACCTATAACAG  
 CTCCTTCAAATGGCAGAGCCCGCTGAGCCTTGTTCTACGCCAGTGCCAGGAGGGTGTGTACAGAG  
 TCTGGGTGCGCTGTGTGTTTCATTGTA AAAACCCCTTTGGAGCATCTGGGAATGTGCTGCCCCACATGTC  
 CAGGCTGTGTGTTGAGGTGTGCAAGTCAAGAAGGGGAGGAATTTAGCCAGAAGGAAGCAAATGTAC  
 CAAGTGTCTGCACTGGAGGCAGACACAATGTGTGAGAGAAGTCTGTCCATTCTCTCTGTCCCCAG  
 CACCTTAGTCACATACCCCCAGGACAGTGTGCCCAAATGTTTGGGTGACAGGAAAGTGTGTTGACCTCC  
 CTTTTGGGAGCTGCCTCTTTGCAAGTGATGTTTATGACAATGGATCCTCATTCTGTACGATAACTGCAC  
 AGCTTGTACTGCAGGGACTCTACTGTGGTTTGAAGAGGAAGTGTCCCACCCTGGTGGCTGTGACCAA  
 GGCCAGGAGGGCTGTGTGAAGAGTGCCTCCTACGAGTGCCCCAGAAGACATCAAAGTATGCAAATTTG  
 GCAACAAGATTTCCAGGATGGAGAGATGTGGTCTCTATCAATTGTACCATCTGTGCTTGTGTGAAAGG  
 CAGGACGGAGTGTGCAATAAGCAGTGCATCCCATCAGTAGTGCCACAGGGCAAAATTTCAACAGA  
 AAAGGATGCTGTCTATTTGCACTGAAAAGCCCGCGTTTGCACGGTGTGAGATCCCCACTACAACA  
 CTTTTGACGGTCGGACATTTAACTTTAGGGGACGTGTCAGTACGTTTTGACAAAAGACTGCTCCTCCC  
 TGCTCGCCCTTCCAGGTGCTGGTGAAGAACGACGCCCGCCGGACACGCTCCTTCTCGTGGACCAAGTCG  
 GTGGAGCTGGTGTGGGCGAGAGCAGGGTCAGCCTGCAGCAGCACCTCACCGTGCCTGGAACGGCTCGC  
 GCATCGCGCTCCCTGCCGCGGCCACACTTCCACATCGACCTGGATGGTACCTCTTGAAGTGACCAC  
 CAAAGCAGGTTTGGAAATATCTTGGATGGAGACAGTTTTGTAGAAGTCATGGCTGCGCCGCATCTCAAG  
 GGCAAGCTCTGTGGTCTTTGTGGCAACTACAATGGACATAAACGTGATGACTTAATTGGTGGAGATGGAA  
 ACTTCAAGTTTGATGTGGATGACTTTGCTGAATCTTGGAGGTGGAGTCCAATGAGTTCTGCAACAGACC  
 TCAGAGAAAGCCAGTGCCTGAACTGTGTCAAGGGACAGTCAAGGTAAGCTCCGGGCCCATCGAATGC  
 CAAAAGCTCAAATCCTGGGAGTTTCCAGCTGCCACTCGACTGTGGACTACGCCACTTTCTACCGTCTCT  
 GTGTGACAGACATGTGTGAATGTCCAGTCCATAAAAACCTGTTATTGCGAGTCATTTTGGCATATACCCG  
 GGCTGCCAGAGAGAGGGCATCAAAGTCCACTGGGAGCCTCAGCAGAATTGTGCAGCCACCCAGTGAAG  
 CATGGTGTGTGTACGATACCTGTGGTCCGGATGTATCAAGACCTGTGACAACTGGAATGAAATTTGGTC  
 CATGCAACAAGCCGTGCGTTGCTGGGTGCCACTGTCCAGCAAACCTGGTCTTCAAGGGAAGGTGCAT  
 CAAGCCAGTCCTTTGTCCCCAGCGG

**ACGCGT**ACGCGGCCGCTCGAGCAGAACTCATCTCAGAAGAGGATCTGGCAGCAAATGATATCCTGGATT  
 ACAAGGATGACGACGATAAGGTTTAA

Protein Sequence: >RC209319 protein sequence  
 Red=Cloning site Green=Tags(s)

MLWFSGVGALAERYCRRSPGITCCVLLLLNCSGVPMSSLASSFLTGSVAKCENEVEVLQIPFITDNPICIMC  
 VCLNKEVTRKREKCPVLSRDCALAIKQRGACCEQCKGCTYEGNTYNSSFQWQSPAEPVLRQCQEGVVTE  
 SGVRCVVHCKNPLEHLGMCCPTCPGCVFEGVYQYQEGEEFQPEGSKCTKCSCTGGRTQCVRVPCILSCPQ  
 HLSHIPPGQCCPKLQQRKVFDFLPGSCLFRSDVYDNGSSFLYDNCTACTCRDSTVVCKRKCSPHGGCDQ  
 GQEGCCECLLRVPPEDIKVKCFGNKIFQDGEWSSINCTICACVKGRTECRNKQCIPISSCPQGGKILNR  
 KGCCPICTEKPVGCTVFGDPHYNTFDGRTFNFQGTCCQYVLTKDCSSPSPFQVLVKNDARRTRFSWTKS  
 VELVLGESRVSLQQHLTVRWNGSRIALPCRAPHFHIDLGGYLLKVTTKAGLEISWDGDSFVEVMAAPHLK  
 GKLCGLGNYNGHKRDDLIGDGNFKFDVDDFAESWRVESNEFCNRPQRKVPPEL CQGTVKVKLRAHREC  
 QKLKSWEFQTCBSTVDYATFYRSCVTD MCEP VHKNCYCESFLAYTRACQREGIKVHWEPQQNCAATQCK  
 HGAVYDTCGPGCIKTCDNWNEIGPCNKPCVAGCHCPANLVLHKGRICKPVLCPQR

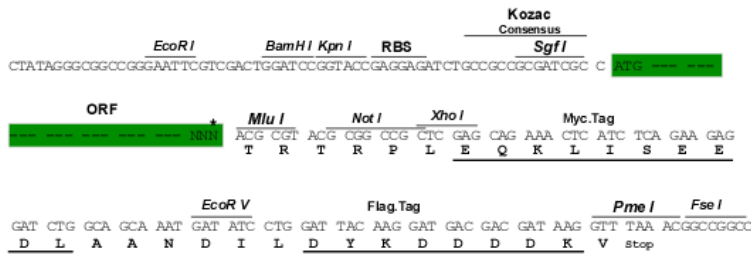
TRTRPLEQKLISEEDLAANDILDYKDDDDKV

Chromatograms: [https://cdn.origene.com/chromatograms/mk6851\\_g01.zip](https://cdn.origene.com/chromatograms/mk6851_g01.zip)

Restriction Sites: SgfI-MluI

Cloning Scheme:

Cloning sites used for ORF Shuttling:



\* The last codon before the Stop codon of the ORF

ACCN: NM\_133468

ORF Size: 2055 bp

**OTI Disclaimer:** Due to the inherent nature of this plasmid, standard methods to replicate additional amounts of DNA in E. coli are highly likely to result in mutations and/or rearrangements. Therefore, OriGene does not guarantee the capability to replicate this plasmid DNA. Additional amounts of DNA can be purchased from OriGene with batch-specific, full-sequence verification at a reduced cost. Please contact our customer care team at [custsupport@origene.com](mailto:custsupport@origene.com) or by calling 301.340.3188 option 3 for pricing and delivery.

The molecular sequence of this clone aligns with the gene accession number as a point of reference only. However, individual transcript sequences of the same gene can differ through naturally occurring variations (e.g. polymorphisms), each with its own valid existence. This clone is substantially in agreement with the reference, but a complete review of all prevailing variants is recommended prior to use. [More info](#)

**OTI Annotation:** This clone was engineered to express the complete ORF with an expression tag. Expression varies depending on the nature of the gene.

**Components:** The ORF clone is ion-exchange column purified and shipped in a 2D barcoded Matrix tube containing 10ug of transfection-ready, dried plasmid DNA (reconstitute with 100 ul of water).

**Reconstitution Method:**

1. Centrifuge at 5,000xg for 5min.
2. Carefully open the tube and add 100ul of sterile water to dissolve the DNA.
3. Close the tube and incubate for 10 minutes at room temperature.
4. Briefly vortex the tube and then do a quick spin (less than 5000xg) to concentrate the liquid at the bottom.
5. Store the suspended plasmid at -20°C. The DNA is stable for at least one year from date of shipping when stored at -20°C.

**RefSeq:** [NM\\_133468.5](#)

**RefSeq Size:** 5031 bp

**RefSeq ORF:** 2058 bp

**Locus ID:** 168667

**UniProt ID:** [Q8N8U9](#)

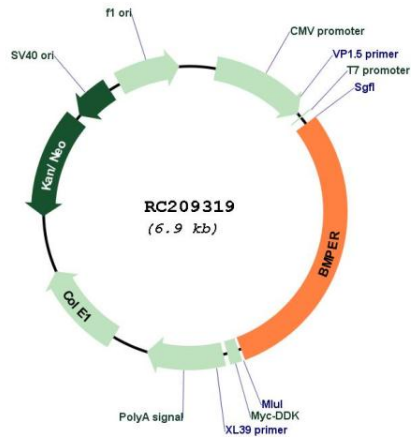
**Cytogenetics:** 7p14.3

**Protein Families:** Secreted Protein

**MW:** 76 kDa

**Gene Summary:** This gene encodes a secreted protein that interacts with, and inhibits bone morphogenetic protein (BMP) function. It has been shown to inhibit BMP2- and BMP4-dependent osteoblast differentiation and BMP-dependent differentiation of the chondrogenic cells. Mutations in this gene are associated with a lethal skeletal disorder, diaphanospondylodysostosis. [provided by RefSeq, Dec 2011]

Product images:



Circular map for RC209319