

## Product datasheet for RC209315

### ZDHHC24 (NM\_207340) Human Tagged ORF Clone

#### Product data:

Product Type:	Expression Plasmids
Product Name:	ZDHHC24 (NM_207340) Human Tagged ORF Clone
Tag:	Myc-DDK
Symbol:	ZDHHC24
Mammalian Cell Selection:	Neomycin
Vector:	pCMV6-Entry (PS100001)
E. coli Selection:	Kanamycin (25 ug/mL)
ORF Nucleotide Sequence:	>RC209315 representing NM_207340 Red=Cloning site Blue=ORF Green=Tags(s)

TTTTGTAATACGACTCACTATAGGGCGGCCGGAATTCGTCGACTGGATCCGGTACCGAGGAGATCTGCC  
GCC**CGATCGCC**

ATGGGGCAGCCCTGGGCGGCTGGGAGCACGGACGGGGCGCCCGCGCAGCTGCCTCTCGTGCTCACCGCGC  
TGTGGGCCGCGGCCGTGGGCCTGGAGCTGGCTTACGTGCTGGTGCCTCGGTCCCGGGCCGCCCGCCGTGGG  
ACCCCTGGCCCGGGCCTTGACAGCTGGCGCTGGCCGCCTCCAGCTGCTCAACCTGCTGGGCAACGTGGGG  
CTCTTCTGCGCTCGGATCCCAGCATCCGTGGCGTGATGCTGGCCGGCCGCGGTCTGGGCCAGGGCTGGG  
CTTACTGCTACCAATGCCAAAGCCAGGTGCCGCCACGCAGCGGACACTGCTCTGCCTGCCGCTGTCAT  
CCTGCGTCGGGACCACCACTGCCGCTGCTGGGCGCTGCGTGGGCTTCGCAACTACCGGCCCTTCCTG  
TGCTGCTGCTTCATGCCGCCGGCGTCTGCTCCACGTCTCTGTGCTGCTGGGCCCTGCACTGTCGGCCC  
TGCTGCGAGCCACACGCCCTCCACATGGCTGCCCTCCTCCTGCTTCCCTGGCTCATGTTGCTCACAGG  
CAGAGTGTCTTGGCACAGTTTGCCTTGGCCTTCGTGACGGACACGTGCGTGGCGGGTGCCTGCTGTGC  
GGGGCTGGGCTGCTTCCATGGGATGCTGCTGCTGCGGGGCCAGACCACATGGGAGTGGGCTCGGGGCC  
AGCACTCTATGACCTGGGTCCCTGCCACAACCTGCAGGCAGCCCTGGGGCCCCGCTGGGCCCTCGTCTG  
GCTCTGGCCCTTCTGGCCTCCCATTCGCTGGGGATGGGATCACCTCCAGACCACAGCAGATGTGGGA  
CACACAGCCTCC

**ACGCGT**ACGCGGCCGCTCGAGCAGAAACTCATCTCAGAAGAGGATCTGGCAGCAAATGATATCCTGGATT  
ACAAGGATGACGACGATAAGGTTTAA



[View online »](#)

**Protein Sequence:** >RC209315 representing NM\_207340  
Red=Cloning site Green=Tags(s)

MGQPWAAGSTDGAPAQLPLVLTALWAAAVGLELAYVVLVLPVLPPLGPLARALQLALAAFQLNLLGNVG  
 LFLRSDPSIRGVMLAGRGLGQGWAYCYQCQSQVPPRSGHCSACRVCILRRDHHCRLLGRCVGFGNYPFL  
 CLLLLHAAGVLLHVSVLLGPALSALLRAHTPLHMAALLLPWMLLTGRVSLAQFALAFVTDTCVAGALLC  
 GAGLLFHGMLLL RGQTTWEWARGQHSYDLGPCHNLQAALGPRWALVWLWPFLASPLPGDGI TFQTTADVG  
 HTAS

TRTRPLEQKLISEEDLANDILDYKDDDDKV

**Chromatograms:** [https://cdn.origene.com/chromatograms/mk8104\\_e04.zip](https://cdn.origene.com/chromatograms/mk8104_e04.zip)

**Restriction Sites:** SgfI-MluI

**Cloning Scheme:**

Cloning sites used for ORF Shuttling:



**ACCN:** NM\_207340

**ORF Size:** 852 bp

**OTI Disclaimer:** The molecular sequence of this clone aligns with the gene accession number as a point of reference only. However, individual transcript sequences of the same gene can differ through naturally occurring variations (e.g. polymorphisms), each with its own valid existence. This clone is substantially in agreement with the reference, but a complete review of all prevailing variants is recommended prior to use. [More info](#)

**OTI Annotation:** This clone was engineered to express the complete ORF with an expression tag. Expression varies depending on the nature of the gene.

**Components:** The ORF clone is ion-exchange column purified and shipped in a 2D barcoded Matrix tube containing 10ug of transfection-ready, dried plasmid DNA (reconstitute with 100 ul of water).

**Reconstitution Method:**

1. Centrifuge at 5,000xg for 5min.
2. Carefully open the tube and add 100ul of sterile water to dissolve the DNA.
3. Close the tube and incubate for 10 minutes at room temperature.
4. Briefly vortex the tube and then do a quick spin (less than 5000xg) to concentrate the liquid at the bottom.
5. Store the suspended plasmid at -20°C. The DNA is stable for at least one year from date of shipping when stored at -20°C.

**RefSeq:** [NM\\_207340.3](#)

**RefSeq Size:** 1319 bp

**RefSeq ORF:** 855 bp

**Locus ID:** 254359

**UniProt ID:** [Q6UX98](#)

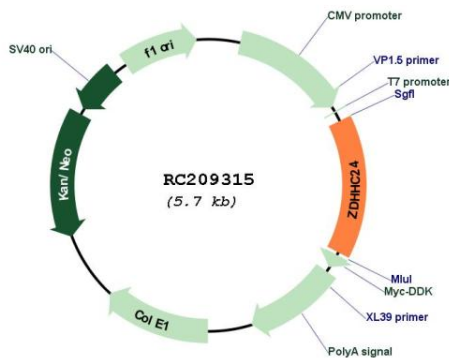
**Cytogenetics:** 11q13.2

**Protein Families:** Transmembrane

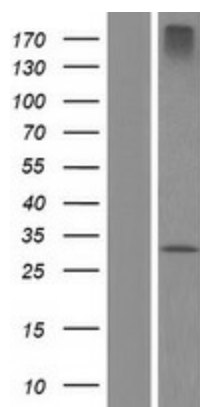
**MW:** 30.2 kDa

**Gene Summary:** Probable palmitoyltransferase that could catalyze the addition of palmitate onto various protein substrates.[UniProtKB/Swiss-Prot Function]

**Product images:**



Circular map for RC209315



Western blot validation of overexpression lysate (Cat# [LY403967]) using anti-DDK antibody (Cat# [TA50011-100]). Left: Cell lysates from untransfected HEK293T cells; Right: Cell lysates from HEK293T cells transfected with RC209315 using transfection reagent MegaTran 2.0 (Cat# [TT210002]).