

Product datasheet for RC209313

ZDHHC18 (NM_032283) Human Tagged ORF Clone

Product data:

Product Type: Expression Plasmids
Product Name: ZDHHC18 (NM_032283) Human Tagged ORF Clone
Tag: Myc-DDK
Symbol: ZDHHC18
Synonyms: DHHC-18; DHHC18
Mammalian Cell Selection: Neomycin
Vector: pCMV6-Entry (PS100001)
E. coli Selection: Kanamycin (25 ug/mL)
ORF Nucleotide Sequence: >RC209313 representing NM_032283
Red=Cloning site Blue=ORF Green=Tags(s)

TTTTGTAATACGACTCACTATAGGGCGCCGGGAATTCGTCGACTGGATCCGGTACCGAGGAGATCTGCC
GCC**CGGATCGCC**

ATGAAGGACTGCGAGTACCAGCAGATCAGCCCCGGGGCCGCCCGCTGCCCGCTCCCCGGGGCGCGCC
GTCCCGGCCCCGCGCTCCCGACTCCGGGCCCGGGCCGCGCCGCGCCCGCCCGCCCGCCCGCGCG
CTGGAGCAGCAGCGGCAGCGGCAGCGGCAGCGGGAGCGGGAGCCTCGGCCCGCCACGGCGCAAGTGG
GAGGTGTTCCCGGTGCAATCGTTCTACTGCGGCGCCGCCTCATGCTGGCCGGCCACGGCGGCTCT
TCGCGCTCAGCTGCTGCTCATCTCACCACCACGGCCTCTTCTCGTCTTTGACTGTCCCTACCTGGC
TCGCAAGCTGACCTTGCCATCCCATCATCGCTGCCATCCTCTTCTTTCGTCATGAGCTGCCTGCTG
CAGACAAGCTTACCGACCTGGGATCCTGCCCGGGCCACTGTCTGTGAAGCAGCCGCCTGGAGAAAC
AGATCGACAACACAGGCAGTTCTACATACCGGCCACCCCTCGGACCCGGGAGGTGCTGATCAACGGGCA
GATGGTGAAGTGAAGTACTGCTTACCTGCAAGATGTTCCGGCCACCCGAACCTCACACTGCAGTGTCT
TGCGACAAGTGTGTGAACGATTTGACCATCACTGCCCTGGGTGGGCAACTGTGTGGGAGACGGAACT
ATCGCTTCTTCTACGCGTTTATCTCTCCCTCTCATTCTGACGGCCTCATCTCGCCTGTGTGGTAC
CCACCTGACGTTGCGCGCTCAGGAAGCAACTTCTCTCACTCTGAAGGAGACACCAGCAAGCGTGCTG
GAGTTGGTGTGATCTGTTCTTCTCCATCTGGTCCATTCTGGGCTCTCAGGTTTTCACAGTACCTCGTGC
CCTCCAACCTGACTACTAATGAAGACATCAAAGGCTCGTGGTCCAGCAAGAGGGGCGGTGAGGCCTCTGT
CAACCCCTACAGCCATAAAAATTATACCAACTGCTGTGCTGTGCTGTGGCCCCCTACCTCCCAGC
CTAATTGACGGAGGGGATTTGTGAGTCCGACACCGTGTGCCCTCACCATCAGAAGCGATGAGCCAG
CCTGCAGAGCCAAGCCTGATGCCAGCATGGTAGGAGGCCACCCC

AG**CGGACCG**ACGCGTACGCGGCCGCTCGAGCAGAACTCATCTCAGAAGAGGATCTGGCAGCAAATGATATCC
TGGATTACAAGGATGACGACGATAAGGTTTAA



[View online »](#)

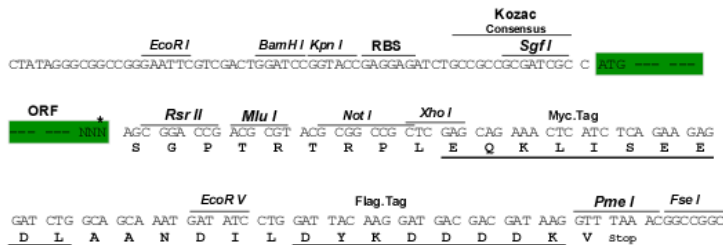
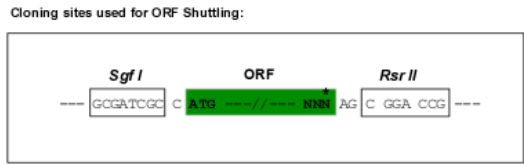
Protein Sequence: >RC209313 representing NM_032283
Red=Cloning site Green=Tags(s)

MKDCEYQQISPGAAPLPASPGARRPGPAASPTPGPGPAPPAAPAPPRWSSSGSGSGSGSLGRRPRRW
 EVFPGNRNYFCGRLMLAGHGGVFAL TLLLIL TTTGLFFVDCPYLARKLTLAIPIIAAILFFFVMSCLL
 QTSFTDPGILPRATVCEAAALEKQIDNTGSSTYRPPRTREVLINGQMVKLKYCFCKMFRPRTSHCSV
 CDNCVERFDHHCWPWVGNVCVGRNRYRFFYAFILSLSFLTAFIFACVVTHLTLRAQGSNFLSTLKETPASVL
 ELVICFFSIWSILGLSGFHTYL VASNLTTNEDIKGSWSSKRGGEASVNPYSHKSIITNCCA V LCGPLPPS
 LIDRRGFVQSDTVLPSPIRSDEPACRAKPDASVMVGGHP

SGPTRTRRLEQKLI SEEDLAANDILDYKDDDDKV

Restriction Sites: SgfI-RsrII

Cloning Scheme:



* The last codon before the Stop codon of the ORF

ACCN: NM_032283

ORF Size: 1164 bp

OTI Disclaimer: Due to the inherent nature of this plasmid, standard methods to replicate additional amounts of DNA in E. coli are highly likely to result in mutations and/or rearrangements. Therefore, OriGene does not guarantee the capability to replicate this plasmid DNA. Additional amounts of DNA can be purchased from OriGene with batch-specific, full-sequence verification at a reduced cost. Please contact our customer care team at custsupport@origene.com or by calling 301.340.3188 option 3 for pricing and delivery.

The molecular sequence of this clone aligns with the gene accession number as a point of reference only. However, individual transcript sequences of the same gene can differ through naturally occurring variations (e.g. polymorphisms), each with its own valid existence. This clone is substantially in agreement with the reference, but a complete review of all prevailing variants is recommended prior to use. [More info](#)

OTI Annotation: This clone was engineered to express the complete ORF with an expression tag. Expression varies depending on the nature of the gene.

Components: The ORF clone is ion-exchange column purified and shipped in a 2D barcoded Matrix tube containing 10ug of transfection-ready, dried plasmid DNA (reconstitute with 100 ul of water).

Reconstitution Method:

1. Centrifuge at 5,000xg for 5min.
2. Carefully open the tube and add 100ul of sterile water to dissolve the DNA.
3. Close the tube and incubate for 10 minutes at room temperature.
4. Briefly vortex the tube and then do a quick spin (less than 5000xg) to concentrate the liquid at the bottom.
5. Store the suspended plasmid at -20°C. The DNA is stable for at least one year from date of shipping when stored at -20°C.

RefSeq: [NM_032283.3](#)

RefSeq Size: 3163 bp

RefSeq ORF: 1167 bp

Locus ID: 84243

UniProt ID: [Q9NUE0](#)

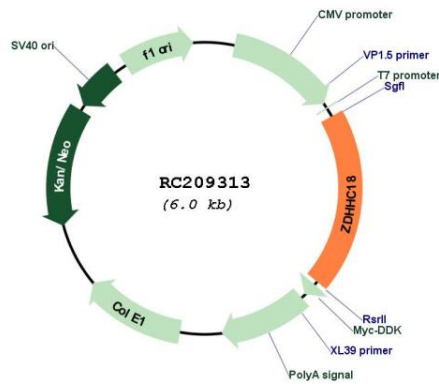
Cytogenetics: 1p36.11

Protein Families: Transcription Factors, Transmembrane

MW: 41.9 kDa

Gene Summary: Has palmitoyltransferase activity towards HRAS and LCK.[UniProtKB/Swiss-Prot Function]

Product images:



Circular map for RC209313