

Product datasheet for **RC209305**

SOCS3 (NM_003955) Human Tagged ORF Clone

Product data:

Product Type:	Expression Plasmids
Product Name:	SOCS3 (NM_003955) Human Tagged ORF Clone
Tag:	Myc-DDK
Symbol:	SOCS3
Synonyms:	ATOD4; CIS3; Cish3; SOCS-3; SSI-3; SSI3
Mammalian Cell Selection:	Neomycin
Vector:	pCMV6-Entry (PS100001)
E. coli Selection:	Kanamycin (25 ug/mL)
ORF Nucleotide Sequence:	>RC209305 ORF sequence Red=Cloning site Blue=ORF Green=Tags(s)

TTTTGTAATACGACTCACTATAGGGCGGCCGGAATTCGTCGACTGGATCCGGTACCGAGGAGATCTGCC
GCC**CGATCGCC**

ATGGTCACCCACAGCAAGTTTCCCGCCGCGGGATGAGCCGCCCTGGACACCAGCCTGCGCCTCAAGA
CCTTCAGCTCCAAGAGCGAGTACCAGCTGGTGGTGAACGCAGTGCGAAGCTGCAGGAGAGCGGCTTCTA
CTGGAGCGCAGTGACCGCGCGGAGGCGAACCTGCTGCTCAGTGCCGAGCCCGCCGGCACCTTTCTGATC
CGCGACAGCTCGGACCAGCGCCACTTCTCACGCTCAGCGTCAAGACCCAGTCTGGACCAAGAACCTGC
GCATCCAGTGTGAGGGGGCAGTCTCTCTGACAGCGATCCCCGGAGCACGCAGCCCGTGCCCGCTT
CGACTGCGTGCTCAAGCTGGTGCACCACTACATGCCGCCCTGGAGCCCTCCTTCCCCTCGCCACCT
ACTGAACCCTCCTCCGAGGTGCCGAGCAGCGCTCTGCCAGCCACTCCCTGGGAGTCCCCCAGAAGAG
CCTATTACATCTACTCCGGGGCGAGAAGATCCCCCTGGTGTGAGCCGGCCCTCTCTCCAACGTGGC
CACTCTTCAGCATCTCTGTGGAAGACCGTCAACGGCCACCTGGACTCCTATGAGAAAGTACCCAGCTG
CCGGGGCCATTCCGGAGTCTCTGGACCACTACGATGCCCCGCTT

ACGCGTACGCGGGCGCTCGAGCAGAACTCATCTCAGAAGAGGATCTGGCAGCAAATGATATCTGGATT
ACAAGGATGACGACGATAAGGTTTAA



[View online »](#)

Protein Sequence: >RC209305 protein sequence
 Red=Cloning site Green=Tags(s)

MVTHSKFPAAGMSRPLDTSRLKTFSSKSEYQLVNAVRKLQESGFYWSAVTGGEANLLLSAEPAGTFLI
 RDSSDQRHFFTL SVKTSQGTKNLRIQCEGGSFSLQSDPRSTQPVPRFDCVLKLVHHYMPPPGAPSFPSPP
 TEPSSVEPQPSAQPLPGSPRRAYYYISGGEKIPLVLSRPLSSNVATLQHLCRKTVNGHLDSEYKVTQL
 PGPIREFLDQYDAPL

TRTRPLEQKLISEEDLAANDILDYKDDDDKV

Chromatograms: https://cdn.origene.com/chromatograms/mk6126_d12.zip

Restriction Sites: SgfI-MluI

Cloning Scheme:



ACCN: NM_003955

ORF Size: 675 bp

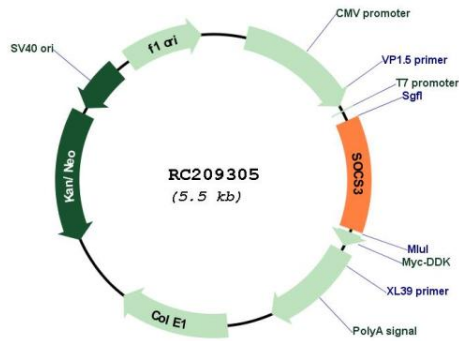
OTI Disclaimer: Due to the inherent nature of this plasmid, standard methods to replicate additional amounts of DNA in E. coli are highly likely to result in mutations and/or rearrangements. Therefore, OriGene does not guarantee the capability to replicate this plasmid DNA. Additional amounts of DNA can be purchased from OriGene with batch-specific, full-sequence verification at a reduced cost. Please contact our customer care team at custsupport@origene.com or by calling 301.340.3188 option 3 for pricing and delivery.

The molecular sequence of this clone aligns with the gene accession number as a point of reference only. However, individual transcript sequences of the same gene can differ through naturally occurring variations (e.g. polymorphisms), each with its own valid existence. This clone is substantially in agreement with the reference, but a complete review of all prevailing variants is recommended prior to use. [More info](#)

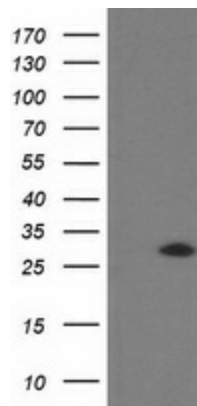
OTI Annotation: This clone was engineered to express the complete ORF with an expression tag. Expression varies depending on the nature of the gene.

Components:	The ORF clone is ion-exchange column purified and shipped in a 2D barcoded Matrix tube containing 10ug of transfection-ready, dried plasmid DNA (reconstitute with 100 ul of water).
Reconstitution Method:	<ol style="list-style-type: none">1. Centrifuge at 5,000xg for 5min.2. Carefully open the tube and add 100ul of sterile water to dissolve the DNA.3. Close the tube and incubate for 10 minutes at room temperature.4. Briefly vortex the tube and then do a quick spin (less than 5000xg) to concentrate the liquid at the bottom.5. Store the suspended plasmid at -20°C. The DNA is stable for at least one year from date of shipping when stored at -20°C.
RefSeq:	<u>NM_003955.5</u>
RefSeq Size:	2737 bp
RefSeq ORF:	678 bp
Locus ID:	9021
UniProt ID:	<u>O14543</u>
Cytogenetics:	17q25.3
Domains:	SH2, SOCS
Protein Families:	Druggable Genome
Protein Pathways:	Adipocytokine signaling pathway, Insulin signaling pathway, Jak-STAT signaling pathway, Type II diabetes mellitus, Ubiquitin mediated proteolysis
MW:	24.8 kDa
Gene Summary:	This gene encodes a member of the STAT-induced STAT inhibitor (SSI), also known as suppressor of cytokine signaling (SOCS), family. SSI family members are cytokine-inducible negative regulators of cytokine signaling. The expression of this gene is induced by various cytokines, including IL6, IL10, and interferon (IFN)-gamma. The protein encoded by this gene can bind to JAK2 kinase, and inhibit the activity of JAK2 kinase. Studies of the mouse counterpart of this gene suggested the roles of this gene in the negative regulation of fetal liver hematopoiesis, and placental development. [provided by RefSeq, Jul 2008]

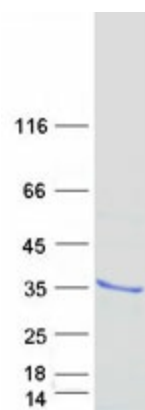
Product images:



Circular map for RC209305



HEK293T cells were transfected with the pCMV6-ENTRY control (Cat# [PS100001], Left lane) or pCMV6-ENTRY SOCS3 (Cat# RC209305, Right lane) cDNA for 48 hrs and lysed. Equivalent amounts of cell lysates (5 ug per lane) were separated by SDS-PAGE and immunoblotted with anti-SOCS3 (Cat# [TA502991]).



Coomassie blue staining of purified SOCS3 protein (Cat# [TP309305]). The protein was produced from HEK293T cells transfected with SOCS3 cDNA clone (Cat# RC209305) using MegaTran 2.0 (Cat# [TT210002]).