

Product datasheet for **RC209295**

BCL6B (NM_181844) Human Tagged ORF Clone

Product data:

Product Type:	Expression Plasmids
Product Name:	BCL6B (NM_181844) Human Tagged ORF Clone
Tag:	Myc-DDK
Symbol:	BCL6B
Synonyms:	BAZF; ZBTB28; ZNF62
Mammalian Cell Selection:	Neomycin
Vector:	pCMV6-Entry (PS100001)
E. coli Selection:	Kanamycin (25 ug/mL)



[View online »](#)

ORF Nucleotide Sequence:

>RC209295 ORF sequence
 Red=Cloning site Blue=ORF Green=Tags(s)

TTTTGTAATACGACTCACTATAGGGCGGCCGGGAATTCGTCGACTGGATCCGGTACCGAGGAGATCTGCC
 GCC**CGGATCGCC**

ATGGGTTCCCCCGCCGCCCGGAGGGAGCGCTGGGCTACGTCCGCGAGTTCACTCGCCACTCTCCGACG
 TGCTGGGCAACCTCAACGAGCTGCGCTGCGCGGATCCTCACTGACGTACGCTGCTGGTTGGCGGGCA
 ACCCCTCAGAGCACACAAGGCAGTTCTCATCGCCTGCAGTGGCTTCTTCTATTCAATTTCCGGGGCGT
 GCGGGAGTCGGGGTGGACGTGCTCTCTCTGCCCGGGGTCCGAAGCGAGAGGCTTCGCCCTCTATTGG
 ACTTCATGTACACTTCGCGCCTGCGCTCTCTCCAGCCACTGCACCAGCAGTCTAGCGGCCCCACCTA
 TTTGCAGATGGAGCAGTGGTCCAGGCATGCCACCCTTCCAGGCCAGCTATGAACCTCTGGGCATC
 TCCCTGCGCCCCGGAAGCAGAACCCCAACCCCCAACCGGCCCTCCACCAGGTAGTCCAGGGCGT
 CCGAAGGACACCAGACCACCTACTGAATCTCGAAGTCGAGTCAAGGCCCCCCAGTCCAGCCAGCCC
 TGACCCCAAGGCCTGCAACTGGAAAAAGTACAAGTACATCGTGTAAACTCTCAGGCCTCCCAAGCAGGG
 AGCCTGGTCGGGGAGAGAAGTTCTGGTCAACCTTGCCCCAACCCAGGCTCCCCAGTGGAGACGAGGCC
 CCAGCAGCAGCAGCAGCAGCAGCAGCAGCAGTGAAGAAGGACCCATTCTGGTCCCCAGAGCAGGCT
 CTCTCAAAGTGTGCCACTGTGCAGTTCAAATGTGGGGCTCCAGCCAGTACCCCTACCTCCTCACATCC
 CAGGCTCAAGACACCTCTGGATCACCTCTGAACGGGCTCGTCCACTACCGGGAAGTGAATTTTTCAGT
 GCCAGAAGTCTGAGGCTGTGGCAGGGTGTCTATCGGGGCTGGACTCCTTGGTTCTGGGGACGAAGCAA
 ACCCTATAAGTGTAGCTGTGCCGTCTTCGTTCCGCTACAAGGGCAACCTTGCCAGTACCCTACAGTG
 CACACAGGGGAAAAGCCTTACCCTGCTCAATCTGCGGAGCCGTTTTAACCGGCCAGCAAACCTGAAAA
 GCACATCTGCGGGCGCACGTGCTGATCCACACCGGGGAGAAGCCCTACCCTTGCCCTACCTGCGGAACC
 CGTTCGCCACCTGCAGACCCTCAAGGCCACGTTTCGATCCACACCGGAGAGAAGCCTTACCCTGCG
 ACCCTGTGGCTGCATTTCCGGCACAAGAGTCAACTGCGGCTGCATCTGCGCCAGAAACACGGAGCTGC
 TACCAACACCAAAGTGCCTACCACATTCTCGGGGGGCC

ACGCGTACGCGGCCGCTCGAGCAGAAACTCATCTCAGAAGAGGATCTGGCAGCAAATGATATCCTGGATT
 ACAAGGATGACGACGATAAGGTTTAA

Protein Sequence:

>RC209295 protein sequence
 Red=Cloning site Green=Tags(s)

MGSPAPEGALGYVREFTRHSSDVLGNLNLRLRGILTDTVLLVGGQPLRAHKAVLIACSGFFYSIFRGR
 AGVGVVDVLSLPGGPEARGFAPLLDFMYTSRLRLSPATAPAVLAAATYLQMEHVQACHRFIQASYEPLGI
 SLRPLEAEPPTPPTAPPPGSPRRSEGHDPPTESRSCSQGPPSPASDPKACNWKYKYIVLNSQASQAG
 SLVGERSSGQPCPQARLPSGDEASSSSSSSSSEEGPIPGPQSRLSPTAATVQFKCGAPASTPYLLTS
 QAQDTSGSPSERARPLPGSEFFSCQNSEAVAGCSSGLDSLVPGEDDKPYKQLCRSSFRYKGNLASHRTV
 HTGEKPYHCSICGARFNRPANLKHRSIHSGEKPYKCYETCGSRFVQVAHLRAHVL IHTGEKPYPCPTCGT
 RFRHLQTLKSHVRIHTGEKPYHCDPCGLHFRHKSQRLRLHLRQKHGAATNTKVHYHILGGP

TRTRPLEQKLISEEDLAANDILDYKDDDDKV

Chromatograms:

https://cdn.origene.com/chromatograms/mk6236_c07.zip

Restriction Sites:

Sgfl-MluI

Cloning Scheme:

Cloning sites used for ORF Shutting:



* The last codon before the Stop codon of the ORF

ACCN: NM_181844

ORF Size: 1440 bp

OTI Disclaimer: The molecular sequence of this clone aligns with the gene accession number as a point of reference only. However, individual transcript sequences of the same gene can differ through naturally occurring variations (e.g. polymorphisms), each with its own valid existence. This clone is substantially in agreement with the reference, but a complete review of all prevailing variants is recommended prior to use. [More info](#)

OTI Annotation: This clone was engineered to express the complete ORF with an expression tag. Expression varies depending on the nature of the gene.

Components: The ORF clone is ion-exchange column purified and shipped in a 2D barcoded Matrix tube containing 10ug of transfection-ready, dried plasmid DNA (reconstitute with 100 ul of water).

Reconstitution Method:

1. Centrifuge at 5,000xg for 5min.
2. Carefully open the tube and add 100ul of sterile water to dissolve the DNA.
3. Close the tube and incubate for 10 minutes at room temperature.
4. Briefly vortex the tube and then do a quick spin (less than 5000xg) to concentrate the liquid at the bottom.
5. Store the suspended plasmid at -20°C. The DNA is stable for at least one year from date of shipping when stored at -20°C.

RefSeq: [NM_181844.4](#)
RefSeq Size: 3544 bp

RefSeq ORF: 1440 bp

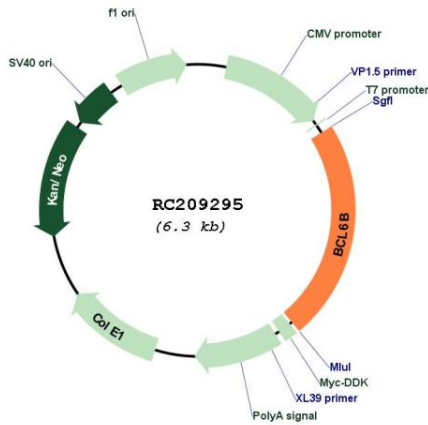
Locus ID: 255877

UniProt ID: [Q8N143](#)
Cytogenetics: 17p13.1

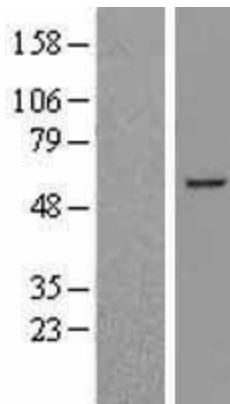
MW: 51.6 kDa

Gene Summary: Acts as a sequence-specific transcriptional repressor in association with BCL6. May function in a narrow stage or be related to some events in the early B-cell development. [UniProtKB/Swiss-Prot Function]

Product images:



Circular map for RC209295



Western blot validation of overexpression lysate (Cat# [LY405551]) using anti-DDK antibody (Cat# [TA50011-100]). Left: Cell lysates from untransfected HEK293T cells; Right: Cell lysates from HEK293T cells transfected with RC209295 using transfection reagent MegaTran 2.0 (Cat# [TT210002]).