

Product datasheet for **RC209294**

JPT2 (NM_144570) Human Tagged ORF Clone

Product data:

Product Type: Expression Plasmids
Product Name: JPT2 (NM_144570) Human Tagged ORF Clone
Tag: Myc-DDK
Symbol: JPT2
Synonyms: C16orf34; HN1L; L11
Mammalian Cell Selection: Neomycin
Vector: pCMV6-Entry (PS100001)
E. coli Selection: Kanamycin (25 ug/mL)
ORF Nucleotide Sequence: >RC209294 ORF sequence
 Red=Cloning site Blue=ORF Green=Tags(s)

TTTTGTAATACGACTCACTATAGGGCGGCCGGGAATTCGTCGACTGGATCCGGTACCGAGGAGATCTGCC
 GCC**CGATCGCC**

ATGTTCCAGGTCCCGGATAGCGAGGGCGGCCGCGCCGGCTCCAGGGCCATGAAGCCCCAGGAGGAGAAT
 CGAGCAATCTTTTTGGAAGTCCAGAAGAAGCTACTCCTCCAGCAGGCCTAATAGGATGGCATCTAATAT
 TTTTGGACCAACAGAAGAACCTCAGAACATACCCAAGAGGACAAATCCCCAGGGGGTAAAGGAAGTGGT
 ATCTTTGACGAATCAACCCCGTGCAGACTCGACAGCACCTGAACCCACCTGGAGGGAAGACCAGCGACA
 TTTTGGGTCTCCGGTCACTGCCACTTACGCTTGGCACACCCAAACAAACCAAGGATCATGTTTTCTT
 ATGTGAAGGAGAAGAACCAAAATCGGATCTTAAAGCTGCAAGGAGCATCCCGGCTGGAGCAGAGCCAGGT
 GAGAAAGGAGCGCCAGAAAAGCAGGCCCGCCAAAGGAGCAGGAGCCCATGCCACAGTCGACAGCCATG
 AGCCCCGGCTGGGGCCGCGGCCTCGCTCTCACAAAGGTCTGAACCCACCGGGAGGCAATCCAGCAT
 CTCCTTCTAC

ACGCGTACGCGGCCGCTCGAGCAGAACTCATCTCAGAAGAGGATCTGGCAGCAATGATATCCTGGATT
 ACAAGGATGACGACGATAAGGTTTAA

Protein Sequence: >RC209294 protein sequence
 Red=Cloning site Green=Tags(s)

MFQVPDSEGRAGSRAMKPPGGESENLFSGPEEATPSSRPNRMASNIFGPTEEPQNI PKRTNPPGGKGS
 IFDESTPVQTRQHLNPPGGKTSDFGSPVATSRLAHPNPKPDHVFLCEGEEPKSDLKAARSIPAGAEPG
 EKGSAKAGPAKEQEPMPVDSHEPRLGPRPRSHNKVLNPPGGKSSISFY

TRTRPLEQKLISEEDLAANDILDYKDDDDKV



[View online »](#)

Chromatograms: https://cdn.origene.com/chromatograms/mk6345_a07.zip

Restriction Sites: SgfI-MluI

Cloning Scheme:



ACCN: NM_144570

ORF Size: 570 bp

OTI Disclaimer: The molecular sequence of this clone aligns with the gene accession number as a point of reference only. However, individual transcript sequences of the same gene can differ through naturally occurring variations (e.g. polymorphisms), each with its own valid existence. This clone is substantially in agreement with the reference, but a complete review of all prevailing variants is recommended prior to use. [More info](#)

OTI Annotation: This clone was engineered to express the complete ORF with an expression tag. Expression varies depending on the nature of the gene.

Components: The ORF clone is ion-exchange column purified and shipped in a 2D barcoded Matrix tube containing 10ug of transfection-ready, dried plasmid DNA (reconstitute with 100 ul of water).

Reconstitution Method:

1. Centrifuge at 5,000xg for 5min.
2. Carefully open the tube and add 100ul of sterile water to dissolve the DNA.
3. Close the tube and incubate for 10 minutes at room temperature.
4. Briefly vortex the tube and then do a quick spin (less than 5000xg) to concentrate the liquid at the bottom.
5. Store the suspended plasmid at -20°C. The DNA is stable for at least one year from date of shipping when stored at -20°C.

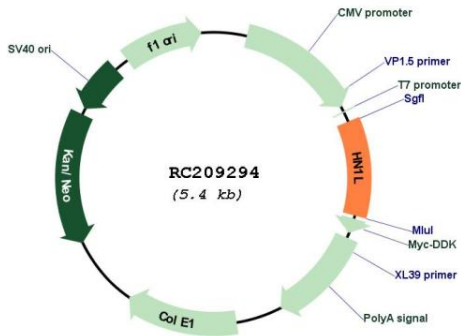
Note: Plasmids are not sterile. For experiments where strict sterility is required, filtration with 0.22um filter is required.

RefSeq: [NM_144570.3](#)

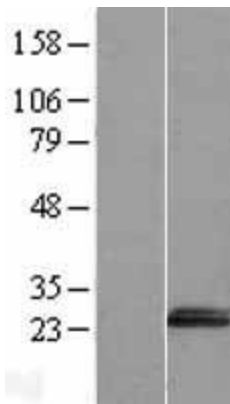
RefSeq Size: 3705 bp

RefSeq ORF: 573 bp
 Locus ID: 90861
 UniProt ID: [Q9H910](#)
 Cytogenetics: 16p13.3
 MW: 20.1 kDa

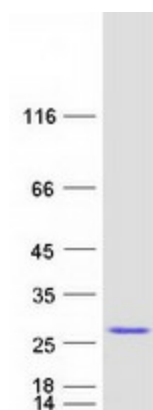
Product images:



Circular map for RC209294



Western blot validation of overexpression lysate (Cat# [LY408279]) using anti-DDK antibody (Cat# [TA50011-100]). Left: Cell lysates from untransfected HEK293T cells; Right: Cell lysates from HEK293T cells transfected with RC209294 using transfection reagent MegaTran 2.0 (Cat# [TT210002]).



Coomassie blue staining of purified JPT2 protein (Cat# [TP309294]). The protein was produced from HEK293T cells transfected with JPT2 cDNA clone (Cat# RC209294) using MegaTran 2.0 (Cat# [TT210002]).