

Product datasheet for RC209291

LYPD5 (NM_001031749) Human Tagged ORF Clone

Product data:

Product Type: Expression Plasmids
Product Name: LYPD5 (NM_001031749) Human Tagged ORF Clone
Tag: Myc-DDK
Symbol: LYPD5
Synonyms: PRO4356
Mammalian Cell Selection: Neomycin
Vector: pCMV6-Entry (PS100001)
E. coli Selection: Kanamycin (25 ug/mL)
ORF Nucleotide Sequence: >RC209291 ORF sequence
 Red=Cloning site Blue=ORF Green=Tags(s)

TTTTGTAATACGACTCACTATAGGGCGCCGGGAATTCGTCGACTGGATCCGGTACCGAGGAGATCTGCC
 GCCCGCATCGCC

ATGAAGCTGCCAGCATCTCCTGTCTCATGAGTGCTTTGAGGCTATCCTGTCTCTGGACACCGGGTATC
 GCGCGCCGGTGACCCTGGTGCAGAAAGGGCTGCTGGACCGGGCTCCTGCGGGCCAGACGCAATCGAACGC
 GGACGCGCTGCCGCCAGACTACTCGGTGGTGCAGGCTGCACAACTGACAAATGCAACGCCACCTCATG
 ACTCATGACGCCCTCCCAACCTGAGCCAAGCACCCGACCGCCGACGCTCAGCGCGCCGAGTGTACG
 CCTGTATCGGGTCCACCAGGATGACTGCGCTATCGGCAGTCCCGACGAGTCCAGTGTACCAGGACCA
 GACCGCCTGCTTCCAGGGCAATGGCAGAATGACAGTTGGCAATTTCTCAGTCCCTGTGTACATCAGAACC
 TGCCACCGGCCCTCCTGCACCACCGAGGGCAGCACCGCCCTGGACAGCCATCGACCTCCAGGGCTCCT
 GCTGTGAGGGGTACCTCTGCAACAGGAAATCCATGACCCAGCCCTTACCAGTGTTCAGCCACCACCCC
 TCCCCGAGCACTACAGGTCTGGCCCTGCTCCTCCAGTCTCCTGCTGGTGGGGCTCTCAGCA

ACGCGTACGCGGCCGCTCGAGCAGAACTCATCTCAGAAGAGGATCTGGCAGCAATGATATCCTGGATT
 ACAAGGATGACGACGATAAGGTTTAA

Protein Sequence: >RC209291 protein sequence
 Red=Cloning site Green=Tags(s)

MKLPSISCPHECFEAILSLDTGYRAPVTLVRKGCWTGPPAGQTQSNADALPPDYSVVRGCTTDKCNALHM
 THDALPNLSQAPDPPTLSGAECYACIGVHQDDCAIGRSRRVQCHQDQACFQGNRMTVGNFVSPVYIRT
 CHRPSCTTEGSTSPWTAIDLQGSCEGYLCNRKSMTPFTSASATTPRALQVLALLLPVLLLVGLSA

TRTRPLEQKLISEEDLAANDILDYKDDDDKV

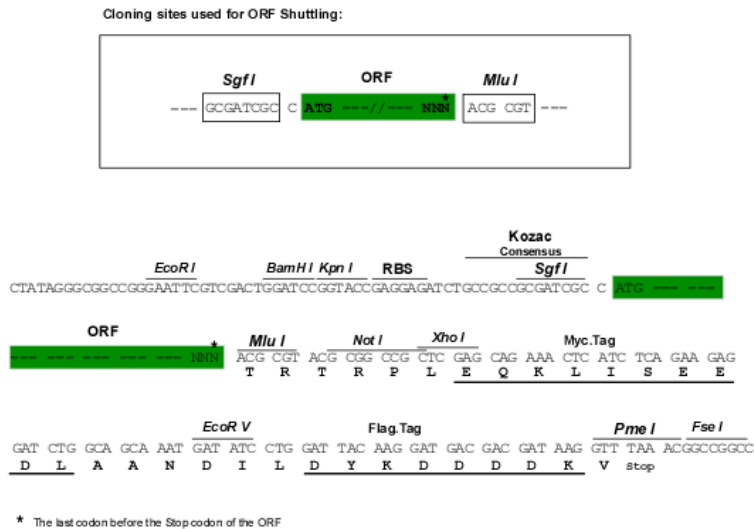


[View online »](#)

Chromatograms: https://cdn.origene.com/chromatograms/mk6345_a11.zip

Restriction Sites: SgfI-MluI

Cloning Scheme:



ACCN: NM_001031749

ORF Size: 624 bp

OTI Disclaimer: The molecular sequence of this clone aligns with the gene accession number as a point of reference only. However, individual transcript sequences of the same gene can differ through naturally occurring variations (e.g. polymorphisms), each with its own valid existence. This clone is substantially in agreement with the reference, but a complete review of all prevailing variants is recommended prior to use. [More info](#)

OTI Annotation: This clone was engineered to express the complete ORF with an expression tag. Expression varies depending on the nature of the gene.

Components: The ORF clone is ion-exchange column purified and shipped in a 2D barcoded Matrix tube containing 10ug of transfection-ready, dried plasmid DNA (reconstitute with 100 ul of water).

Reconstitution Method:

1. Centrifuge at 5,000xg for 5min.
2. Carefully open the tube and add 100ul of sterile water to dissolve the DNA.
3. Close the tube and incubate for 10 minutes at room temperature.
4. Briefly vortex the tube and then do a quick spin (less than 5000xg) to concentrate the liquid at the bottom.
5. Store the suspended plasmid at -20°C. The DNA is stable for at least one year from date of shipping when stored at -20°C.

RefSeq: [NM_001031749.1](#), [NP_001026919.1](#)

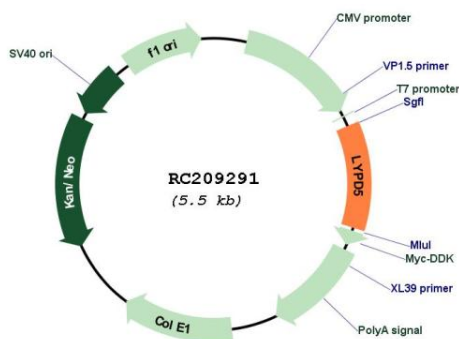
RefSeq Size: 2518 bp

RefSeq ORF: 756 bp

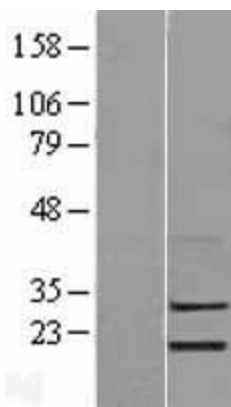
Locus ID: 284348

UniProt ID: [Q6UWN5](#)
 Cytogenetics: 19q13.31
 Protein Families: Druggable Genome
 MW: 22.2 kDa

Product images:



Circular map for RC209291



Western blot validation of overexpression lysate (Cat# [LY422191]) using anti-DDK antibody (Cat# [TA50011-100]). Left: Cell lysates from untransfected HEK293T cells; Right: Cell lysates from HEK293T cells transfected with RC209291 using transfection reagent MegaTran 2.0 (Cat# [TT210002]).