

Product datasheet for **RC209288**

L3MBTL3 (NM_001007102) Human Tagged ORF Clone

Product data:

Product Type:	Expression Plasmids
Product Name:	L3MBTL3 (NM_001007102) Human Tagged ORF Clone
Tag:	Myc-DDK
Symbol:	L3MBTL3
Synonyms:	MBT-1; MBT1
Mammalian Cell Selection:	Neomycin
Vector:	pCMV6-Entry (PS100001)
E. coli Selection:	Kanamycin (25 ug/mL)



[View online »](#)

ORF Nucleotide Sequence:

>RC209288 ORF sequence
 Red=Cloning site Blue=ORF Green=Tags(s)

TTTTGTAATACGACTCACTATAGGGCGGCCGGGAATTCGTCGACTGGATCCGGTACCGAGGAGATCTGCC
 GCC**CGCATCGCC**

ATGACTGAATCTGCCTCTAGCACAAAGTGGTCAAGAGTTTGTGTTCAGTGTATGGACTGGAAGATG
 GAGTGGGCACGTTACCAGGAAGTGACTTAAAGTTTCGGGTAAATGAGTTTGGAGCCCTGGAAGTTATTAC
 AGATGAGAATGAGATGGAATGTTAAAAAAGCAACTGCTACCACCACTTGGATGGTACCAACTGCTCAA
 GAAGTCTTTTCAGAGAAGACTGGGATGCCTTTCAGGTTGAAGGATCCAGTGAAAGTAGAAGGGCTTCAGT
 TCTGTGAGAACTGTTGTCAAGTATGGCAACGTAGATGAGTGTCTTCTGGAGGAACTATTGCAGCCAGAA
 TTGTGCTCGGCACATCAAAGATAAAGATCAGAAGGAAGAAAGGGACGTAGAAGAAGACAATGAGGAAGAA
 GATCCTAAGTGTAGTCGGAAGAAAAACCAAAATTATCTCTGAAAGCTGACAACAAGGAGGATGGAGAAG
 AGAGAGATGATGAAATGGAGAACAACAAGATGTAAGAATCCTGAGGGGTTTCGAGAGAGCAGGAGGAA
 AAGACGAGGGGATTCGGCTGTACTAAAGCAGGGTTTGCCTCCTAAAGGAAAGAAAGCGTGGTGTGGGCA
 TCCTACCTGGAAGAGGAGAAAGCGGTGGCAGTCCGGCGAAGCTGTTCAAGGAGCATCAATCCTTTCCAT
 ATAACAAAAATGGATTCAAAGTTGGCATGAAATAGAAGGCGTGGATCCCAGCATCAGTCTGTGTACTG
 TGTCTCACCGTCGCGGAGGTTTGTGGATACCGGATAAAGCTTCACTTTGATGGGTATTCTGATTGCTAT
 GACTTCTGGGTGAATGCAGACGCTCTGGATATCCACCCAGTTGGGTGGTGTGAGAAAACCGGCCACAAAC
 TCCATCCTCCAAAAGGGTATAAAGAAGAAGAATCAATTGGCAGACCTATCTTAAGACATGTAAGCTCA
 AGCTGCTCCTAAGTCATTATTTGAAAATCAGAAATAACAGTGTCCCATCGGGCTTTCGAGTTGGTATG
 AAGCTTGAGGCAGTAGACAAAAAGAATCCCTCATTCTGTGTGTACGGTAAACAGATATGGTGGACA
 ATCGTTTCTGGTACATTTTGACAACTGGGATGAGAGCTATGACTATTGGTGTGAAGCATCAAGTCCACA
 TATTCATCCAGTTGGTTGGTGTAAAGAACATAGAAGAACCCTTATTACTCCACCAGGTTATCCAAATGTG
 AAACATTTTTCTGGGATAAATACTTAGAAGAAACCAATTCTTTACCTGCTCCTGCAAGACTTTCAAAG
 TGAACCTCCTCATGGATTCCAGAAAAAATGAAGCTTGAGGTTGTAGACAAAAGGAACCTATGTTTAT
 TAGAGTAGCAACTGTGGCAGACACAGATGATCACCGGGTAAAAGTTCACTTTGATGGCTGGAACAATTGC
 TATGATTACTGGATAGATGCAGATTCTCCTGATATTCACCCTGTAGGCTGGTGTCAAAAACAGGACATC
 CCCTTCAGCTCCTTTGAGCCCCTTAGAATTAATGGAAGCTTCAGAACATGGTGGATGCTCAACCCCGGG
 ATGTAAGGGATTGGCCATTTCAAGAGAGCGAGACATCTGGGCCCTCACAGTGTGCCAACTGTCCCTAT
 TCAGAAATCAATTTGAATAAAGACCGTATTTTCCAGACCGCTTAAGTGGTGTGAGTGCCTCCGGCTAGTC
 CGTCATTTCCAAGAAATAAAGGACAGATGCAAAATGAAAGCTTCTTCCCTGAAATCAGAGACCAGCA
 TGCTGATGATGTCAAAGAAGACTTTGAAGAGAGAACAGAAAGTGAATGAGAATCACATGAAGCCAGA
 GGTGCCCGGAAGAACCACCGTCCAGCAGGCACAGCGTCGGTCAAGTGTCTTTCTGTCCCTTAAGTCCC
 CAATTCATGTCTGCCCTTGGCTGGGAGCAGCAAAGCAAACCTTCTTCAACTGTGCGAGGAATCCCTGC
 CAGTAAAGTTTCCAAATGGAGCACAGACAGGTTGTCAGAAATTTATACAGAGCTTACCTGGGTGTGAAGAA
 CATGGAAGGTATTTAAGATGAACAAATTGATGGAGAAGCATTCTACTTATGACTCAACAGACATTG
 TAAAAATTATGAGCATTAACTGGGCCCTGCTCTCAAAATTTCAATTCATCCTGATGTTCAAAGCTGC
 AGAGAAGAATTTCACAATGAAGTT

ACGCGTACGCGGCCGCTCGAGCAGAAACTCATCTCAGAAGAGGATCTGGCAGCAAATGATATCCTGGATT
 ACAAGGATGACGACGATAAGGTTTAA

Protein Sequence: >RC209288 protein sequence
Red=Cloning site Green=Tags(s)

```

MTESASSTSGQEFDFVFSVMDWKDVGTLPGSDLKFRVNEFGALEVITDENEMENVKATATTTWMVPTAQ
EVFSEKTGMPFRLKDPVKVEGLQFCENCCQYGNVDECLSGGNYCSQNCARHIKDKDQKEERDVEEDNEEE
DPKCSRKKKPKLSLKADNKEDGEERDDMENKQDVRILRGSQRARRKRRGDSAVLKQGLPPKGGKAWCWA
SYLEEEKAVAVPAKLKEHQSFYPYKNGFKVGMKLEGVDPHQSVYCVLTVAEVCGYRIKLFHFDGYSDCY
DFWVNADALDIHPVWGCEKTGHKLHPPKGYKEEFNWQTYLKTCKAQAAPKSLFENQITVIPSGFRVGM
KLEAVDKKNPSFICVATVTDMDNRFLVHFDNWDESVDYWCEASSPHIHPVWGCKEHRRLITPPGYPNV
KHFSDWKYLEETNSLPAPARAFKVKPPHGFQKKMKLEVVDKRNPFIKRVATVADTDDHRVKVHFDGWNNC
YDYWIDADSPDIHPVWGCSKTGHPLQPPLSPELMEASEHGGCSTPGCKGIGHFKRARHLGPHSAANCPY
SEINLNKDRIFPDRLSGEMPPASPSFPRNKRTDANESSSSPEIRDQHADDVKEDFEERTESEMRTSHEAR
GAREEPTVQQAQRSAVFLSFKSPIPLRWEQQSKLLPTVAGIPASKVSKWSTDEVSEFIQSLPGCEE
HGKVKFDEQIDGEAFLLMTQTDIVKIMSIKLGPAIKIFNSILMFKAAEKNSHNEL
    
```

TRTRPLEQKLISEEDLANDILDYKDDDDKV

Chromatograms: https://cdn.origene.com/chromatograms/mk6345_c09.zip

Restriction Sites: SgfI-MluI

Cloning Scheme:

Cloning sites used for ORF Shuttling:



* The last codon before the Stop codon of the ORF

ACCN: NM_001007102

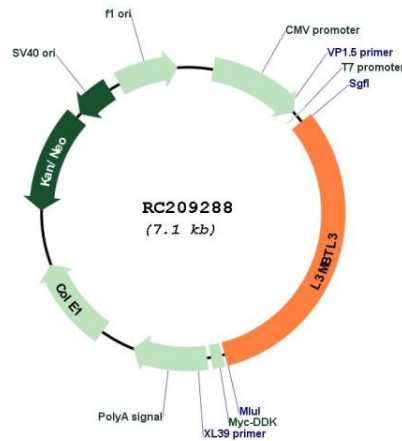
ORF Size: 2265 bp

OTI Disclaimer: The molecular sequence of this clone aligns with the gene accession number as a point of reference only. However, individual transcript sequences of the same gene can differ through naturally occurring variations (e.g. polymorphisms), each with its own valid existence. This clone is substantially in agreement with the reference, but a complete review of all prevailing variants is recommended prior to use. [More info](#)

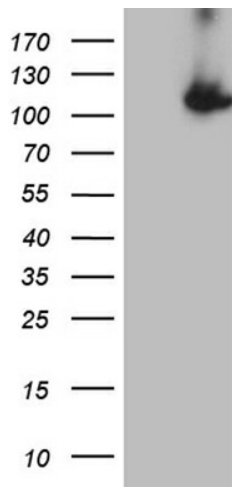
OTI Annotation: This clone was engineered to express the complete ORF with an expression tag. Expression varies depending on the nature of the gene.

Components:	The ORF clone is ion-exchange column purified and shipped in a 2D barcoded Matrix tube containing 10ug of transfection-ready, dried plasmid DNA (reconstitute with 100 ul of water).
Reconstitution Method:	<ol style="list-style-type: none"> 1. Centrifuge at 5,000xg for 5min. 2. Carefully open the tube and add 100ul of sterile water to dissolve the DNA. 3. Close the tube and incubate for 10 minutes at room temperature. 4. Briefly vortex the tube and then do a quick spin (less than 5000xg) to concentrate the liquid at the bottom. 5. Store the suspended plasmid at -20°C. The DNA is stable for at least one year from date of shipping when stored at -20°C.
RefSeq:	<u>NM_001007102.4</u>
RefSeq Size:	4142 bp
RefSeq ORF:	2268 bp
Locus ID:	84456
UniProt ID:	<u>Q96JM7</u>
Cytogenetics:	6q23.1
MW:	85.8 kDa
Gene Summary:	This gene encodes a member of the malignant brain tumor (MBT) family of chromatin interacting transcriptional repressors. Members of this family function as methyl-lysine readers, which recognize methylated lysine residues on histone protein tails, and are associated with the repression of gene expression. The encoded protein may regulate hematopoiesis. Homozygous deletion of this gene has been observed in human patients with medulloblastoma. [provided by RefSeq, Oct 2016]

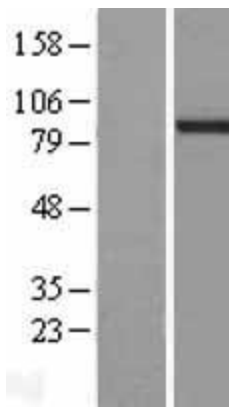
Product images:



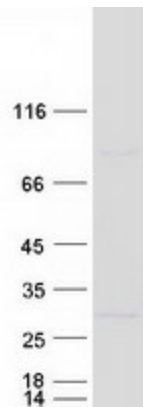
Circular map for RC209288



HEK293T cells were transfected with the pCMV-ENTRY control (Cat# [PS100001], Left lane) or pCMV6-ENTRY L3MBTL3 (Cat# RC209288, Right lane) cDNA for 48 hrs and lysed. Equivalent amounts of cell lysates (5 ug per lane) were separated by SDS-PAGE and immunoblotted with anti-L3MBTL3 (Cat# [TA809704])(1:2000). Positive lysates [LY422800] (100ug) and [LC422800] (20ug) can be purchased separately from OriGene.



Western blot validation of overexpression lysate (Cat# [LY422800]) using anti-DDK antibody (Cat# [TA50011-100]). Left: Cell lysates from untransfected HEK293T cells; Right: Cell lysates from HEK293T cells transfected with RC209288 using transfection reagent MegaTran 2.0 (Cat# [TT210002]).



Coomassie blue staining of purified L3MBTL3 protein (Cat# [TP309288]). The protein was produced from HEK293T cells transfected with L3MBTL3 cDNA clone (Cat# RC209288) using MegaTran 2.0 (Cat# [TT210002]).