

## Product datasheet for **RC209285**

### **FATP1 (SLC27A1) (NM\_198580) Human Tagged ORF Clone**

#### **Product data:**

Product Type:	Expression Plasmids
Product Name:	FATP1 (SLC27A1) (NM_198580) Human Tagged ORF Clone
Tag:	Myc-DDK
Symbol:	FATP1
Synonyms:	ACSVL5; FATP; FATP-1; FATP1
Mammalian Cell Selection:	Neomycin
Vector:	pCMV6-Entry (PS100001)
E. coli Selection:	Kanamycin (25 ug/mL)



[View online »](#)

**ORF Nucleotide Sequence:**

>RC209285 representing NM\_198580  
 Red=Cloning site Blue=ORF Green=Tags(s)

TTTTGTAATACGACTCACTATAGGGCGGCCGGAATTCGTCGACTGGATCCGGTACCGAGGAGATCTGCC  
 GCC**CGGATCGCC**

ATCGGGCTCCGGGTGCGGGCGGGCCTCGGTGGTCTCGTGGCGCTGTTGTGGCTGCTGGGGCTGCCGT  
 GGACCTGGAGCGCGGCAGCGGCGCTCGGGTGTACGTGGGACAGCGCGGCTGGCGCTTCCTGCGCATCGT  
 CTGCAAGACCGCGAGGCGAGACCTCTTCGGTCTCTGTGCTGATCCGCGTGCGCCTGGAGCTGCGGCGG  
 CACCAGCGTGCCGGCCACACCATCCCGCATCTTTAGGCGGTAGTGCAGCGACAGCCGAGCGCCTGG  
 CGCTGGTGGATGCCGGGACCGGCGAGTGTGGACCTTTGCGCAGCTGGACGCTACTCCAATGCGGTAGC  
 CAACCTCTCCGCCAGCTGGGCTTCGCGCCGGGCGACGTGGTGGCCATCTTCTGGAGGGCCGGCCGGAG  
 TTCGTGGGGCTGTGGCTGGGCTGGCCAAGGCGGGCATGGAGGCCGCGCTGCTCAACGTGAACCTGCGGC  
 GCGAGCCCTGGCCTTTCCTGGGCACCTCGGGCGCTAAGGCCCTGATCTTTGGAGGAGAAATGGTGGC  
 GCGGTGGCCGAAGTGAAGCGGCATCTGGGAAAAGTTTGATCAAGTTCTGCTCTGGAGACTTGGGGCC  
 GAGGGCATCTTGCCGGACACCCACTCCTGGACCCGCTGCTGAAGGAGGCTCTACTGCCCCCTTGGCAC  
 AGATCCCCAGCAAGGGCATGGACGATCGTCTTTCTACATCTACACGTCGGGGACACCGGGCTGCCAA  
 GGCTGCCATTGTCGTGCACAGCAGTACTACCGCATGGCAGCCTTCGGCCACCACGCTACCGCATGCGAG  
 GCGGCTGACGTGCTCTATGACTGCCTGCCCTGTACCACTCGGCAGGAAACATCATCGGCGTGGGGCAGT  
 GTCTCATCTATGGGCTGACAGTCGTCTCCGCAAGAAATCTCGGCCAGCCGCTTCTGGGACGACTGCAT  
 CAAGTACAACGACGGTGGTTCAGTACATCGGGGAGATCTGCCGCTACCTGTGAAGCAGCCGGTGGCG  
 GAGGCGGAGAGGCGACACCGGTGCGCCTGGCGGTGGGAAACGGGCTGCGTCTGCCATCTGGGAGGAGT  
 TCACGAGCGCTTCGGCGTACGCCAAATCGGGGAGTTCTACGGGCCACCGAGTGAACGACGATTGC  
 CAACATGGACGGCAAGGTGGCTCCTGTGGTTCAACAGCCGCATCTGCCCCACGTGTACCCCATCCGG  
 CTGGTGAAGTCAATGAGGACACAATGGAGCTGCTGCGGGATGCCAGGGCCTCTGCATCCCTGCCAGG  
 CCGGGGAGCCTGGCCTCCTTGTGGGTGAGATCAACCAACAGGACCCGCTGCGCCGCTTCGATGGCTATGT  
 CAGCGAGAGCGCCACCAGCAAGAAGATCGCCACAGCGTCTTCAGCAAGGGCGACAGCGCTACCTCTCA  
 GGTGACGTGCTAGTATGGATGAGCTGGGCTACATGTACTTCCGGGACCGTAGCGGGACACCTTCCGCT  
 GGCGAGGGGAGAACGCTCCACCACCGAGGTGGAGGGCTGCTGAGCCGCTGCTGGCCAGACAGACGT  
 GGCCGTCTATGGGGTGGCTGTTCCAGGAGTGGAGGTAAGGCAGGGATGGCGGCCGTCGAGACCCCCAC  
 AGCCTGCTGGACCCCAACGCGATATACCAGGAGCTGCAGAAGGTGCTGGCACCTATGCCGGCCCATCT  
 TCCTGCGCCTCCTGCCCCAGGTGGACACCACAGGCACCTTCAAGATCCAGAAGACGAGGCTGCAGCGAGA  
 GGGCTTTGACCCACGCCAGACCTCAGACCGGCTCTTCTTCTGGACCTGAAGCAGGGCCACTACCTGCC  
 TAAATGAGGCAGTCTACACTCGCATCTGCTCGGGCGCCTTCGCCCTC

**ACGCGT**ACGCGGGCCGCTCGAGCAGAAACTCATCTCAGAAGAGGATCTGGCAGCAAATGATATCCTGGATT  
 ACAAGGATGACGACGATAAGGTTTAA

**Protein Sequence:** >RC209285 representing NM\_198580  
Red=Cloning site Green=Tags(s)

MRAPGAGAASVSLALLWLLGLPWTWSAAAALGVYVSGSGWRFLRIVCKTARRDLFGLSVLIRVRELR  
 HQRAGHTIPRIFQAVVQRQPERLALVDAGTGECWTF AQLDAYSNAVANLFRQLGFAPGDVVAIFLEGRPE  
 FVGLWLGLAKAGMEAALLNVNLRREPLAFCLGTSGAKALIFGGEMVAVAEVSGLHGKSLIKFCSDGLGP  
 EGILPDTHLLDPLLKEASTAPLAQIPSKGMDDRLFYIYTSGTTGLPKAAIVVHSRYRMAAFGHHAYRMQ  
 AADVLYDCLPLYHSAGNIIGVGQCLYGLTVVLRKKFSASRFWDDCIKYNCTVVQYIGEICRYLLKQPV  
 EAERRHRVRLAVGNLRLPAIWEEF TERFGVRQIGEFYGATECNC SIANMDGKVGSCGFNSRILPHVYPIR  
 LVKVNEDTMELLRDAQGLCIPCQAGEPGLLVGQINQDPLRRFDGYVSESATSKKIAHSVFSKGD SAYLS  
 GDVLMDELGYMYFRDRSGDTRWRGENVSTTEVEGVL S RLLGQTDVAVYGVAVPGVEGKAGMAAVADPH  
 SLLDPNAIYQELQKVLAPYARPIFLRLLPQVDTTGT FKI QKTRLQREGFDP RQTS DRLF FLDLKQGHYLP  
 LNEAVYTRICSGAFAL

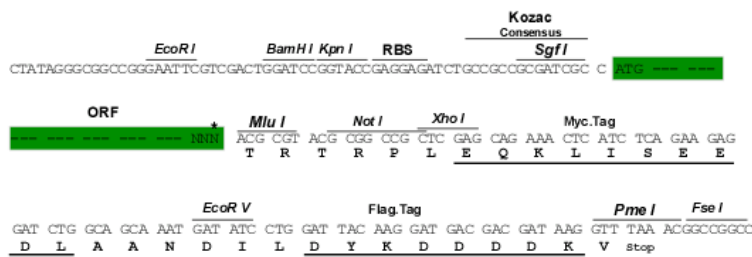
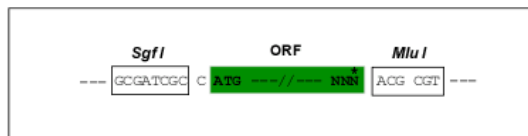
TRTRPLEQKLISEEDLANDILDYKDDDDKV

**Chromatograms:** [https://cdn.origene.com/chromatograms/mk8114\\_a03.zip](https://cdn.origene.com/chromatograms/mk8114_a03.zip)

**Restriction Sites:** SgfI-MluI

**Cloning Scheme:**

Cloning sites used for ORF Shuttling:



**ACCN:** NM\_198580

**ORF Size:** 1938 bp

**OTI Disclaimer:** The molecular sequence of this clone aligns with the gene accession number as a point of reference only. However, individual transcript sequences of the same gene can differ through naturally occurring variations (e.g. polymorphisms), each with its own valid existence. This clone is substantially in agreement with the reference, but a complete review of all prevailing variants is recommended prior to use. [More info](#)

**OTI Annotation:** This clone was engineered to express the complete ORF with an expression tag. Expression varies depending on the nature of the gene.

**Components:** The ORF clone is ion-exchange column purified and shipped in a 2D barcoded Matrix tube containing 10ug of transfection-ready, dried plasmid DNA (reconstitute with 100 ul of water).

**Reconstitution Method:**

1. Centrifuge at 5,000xg for 5min.
2. Carefully open the tube and add 100ul of sterile water to dissolve the DNA.
3. Close the tube and incubate for 10 minutes at room temperature.
4. Briefly vortex the tube and then do a quick spin (less than 5000xg) to concentrate the liquid at the bottom.
5. Store the suspended plasmid at -20°C. The DNA is stable for at least one year from date of shipping when stored at -20°C.

**RefSeq:** [NM\\_198580.3](#)

**RefSeq Size:** 3562 bp

**RefSeq ORF:** 1941 bp

**Locus ID:** 376497

**UniProt ID:** [Q6PCB7](#)

**Cytogenetics:** 19p13.11

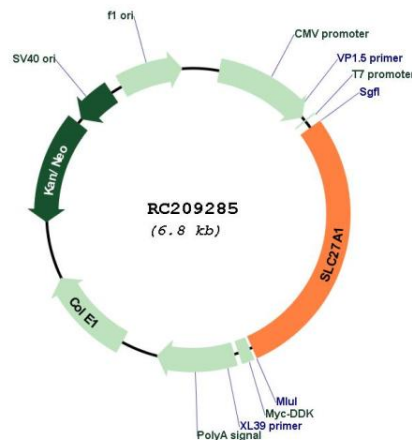
**Protein Families:** Transmembrane

**Protein Pathways:** PPAR signaling pathway

**MW:** 70.9 kDa

**Gene Summary:** Mediates the ATP-dependent import of long-chain fatty acids (LCFA) into the cell by mediating their translocation at the plasma membrane (PubMed:28178239). Has also an acyl-CoA ligase activity for long-chain and very-long-chain fatty acids. May act directly as a bona fide transporter, or alternatively, in a cytoplasmic or membrane-associated multimeric protein complex to trap and draw fatty acids towards accumulation. Plays a pivotal role in regulating available LCFA substrates from exogenous sources in tissues undergoing high levels of beta-oxidation or triglyceride synthesis. May be involved in regulation of cholesterol metabolism (By similarity).[UniProtKB/Swiss-Prot Function]

### Product images:



Circular map for RC209285