



**Cloning Scheme:**


**ACCN:** NM\_203411

**ORF Size:** 477 bp

**OTI Disclaimer:** The molecular sequence of this clone aligns with the gene accession number as a point of reference only. However, individual transcript sequences of the same gene can differ through naturally occurring variations (e.g. polymorphisms), each with its own valid existence. This clone is substantially in agreement with the reference, but a complete review of all prevailing variants is recommended prior to use. [More info](#)

**OTI Annotation:** This clone was engineered to express the complete ORF with an expression tag. Expression varies depending on the nature of the gene.

**Components:** The ORF clone is ion-exchange column purified and shipped in a 2D barcoded Matrix tube containing 10ug of transfection-ready, dried plasmid DNA (reconstitute with 100 ul of water).

- Reconstitution Method:**
1. Centrifuge at 5,000xg for 5min.
  2. Carefully open the tube and add 100ul of sterile water to dissolve the DNA.
  3. Close the tube and incubate for 10 minutes at room temperature.
  4. Briefly vortex the tube and then do a quick spin (less than 5000xg) to concentrate the liquid at the bottom.
  5. Store the suspended plasmid at -20°C. The DNA is stable for at least one year from date of shipping when stored at -20°C.

**RefSeq:** [NM\\_203411.2](#)

**RefSeq Size:** 887 bp

**RefSeq ORF:** 480 bp

**Locus ID:** 92162

**UniProt ID:** [Q6PEY1](#)

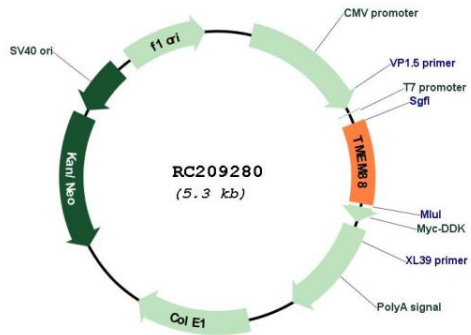
**Cytogenetics:** 17p13.1

**Protein Families:** Transmembrane

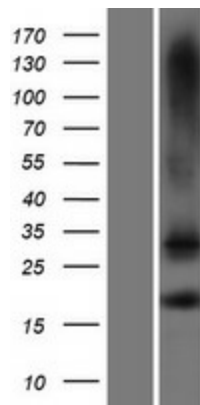
**MW:** 17.1 kDa

**Gene Summary:** Inhibits the Wnt/beta-catenin signaling pathway. Crucial for heart development and acts downstream of GATA factors in the pre-cardiac mesoderm to specify lineage commitment of cardiomyocyte development.[UniProtKB/Swiss-Prot Function]

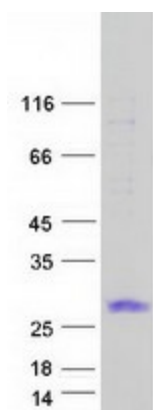
**Product images:**



Circular map for RC209280



Western blot validation of overexpression lysate (Cat# [LY404348]) using anti-DDK antibody (Cat# [TA50011-100]). Left: Cell lysates from untransfected HEK293T cells; Right: Cell lysates from HEK293T cells transfected with RC209280 using transfection reagent MegaTran 2.0 (Cat# [TT210002]).



Coomassie blue staining of purified TMEM88 protein (Cat# [TP309280]). The protein was produced from HEK293T cells transfected with TMEM88 cDNA clone (Cat# RC209280) using MegaTran 2.0 (Cat# [TT210002]).