

Product datasheet for **RC209276**

TUBA3D (NM_080386) Human Tagged ORF Clone

Product data:

Product Type:	Expression Plasmids
Product Name:	TUBA3D (NM_080386) Human Tagged ORF Clone
Tag:	Myc-DDK
Symbol:	TUBA3D
Synonyms:	H2-ALPHA; KTCN9; TUBA2
Mammalian Cell Selection:	Neomycin
Vector:	pCMV6-Entry (PS100001)
E. coli Selection:	Kanamycin (25 ug/mL)



[View online »](#)

ORF Nucleotide Sequence:

>RC209276 ORF sequence
 Red=Cloning site Blue=ORF Green=Tags(s)

TTTTGTAATACGACTCACTATAGGGCGGCCGGAATTCGTCGACTGGATCCGGTACCGAGGAGATCTGCC
 GCC**CGGATCGCC**

ATGCGCGAGTGTATCTCTATCCACGTGGGGCAGCGGGTGTCCAGATCGGCAATGCCTGCTGGAACTGT
 ACTGCCTTGAACATGGAATTCAGCCCGATGGCCAAATGCCAAGTGATAAAACCATTGGTGGCGGGGACGA
 CTCCTTCAACACGTTCTTCAGTGAGACTGGAGCTGGCAAGCACGTGCCAGAGCAGTGTTTGTGGACCTG
 GAGCCACTGTGGTCGATGAAGTGCACACAGGACCTACAGGCAGCTCTCCACCCGAGCAGCTGATCA
 CCGGGAAGGAAGATGCAGCCAATAATTACGCCAGGGGCCATTACACCATCGGCAAGGAGATTGTTGACCT
 AGTCTGGACCGGATCCGCAAACCTGGCGGATCTGTGCACAGGACTGCAGGGCTTCTCATCTCCACAGC
 TTTGGGGCGGCACTGGCTCTGGTTTCGCATCTCTGCTCATGGAGCGGCTCTCAGTGGATTACGGCAAGA
 AGTCCAAGCTAGAGTTTGCCATTTACCCAGCCCCCAGGTCTCCACAGCCGTGGTGGAGCCCTACAACCT
 CATCTGACCACCCACAGACCCTGGAACATTCTGACTGTGCCTTCATGGTCGACAATGAAGCCATCTAT
 GACATATGTCGGCGCAACCTGGACATTGAACGTCCCACGTACACCAACCTCAATCGCCTGATTGGGCGA
 TCGTGTCTCCATCACAGCCTCCCTGCGATTTGATGGGGCCCTGAATGTGGACTTGACGGAATCCAGAC
 CAACCTAGTGCCGTACCCCGCATCCACTTCCCCTGGCCACCTATGCCCCAGTCATCTCAGCTGAGAAG
 GCCTACCACGAGCAGCTGTCTGTGGCCGAGATCAACATGCCTGCTTCGAGCCAGCCAATCAAAATGGTCA
 AGTATGACCCCTCGCCACGGCAAGTACATGGCCTGCTGCATGTTGTACAGGGGGGACGTGGTCCCCAAGA
 CGTCAACGCGGCCATCGCCACCATCAAGACCAAGCGCACCATCCAGTTTGTGGATTGGTGGCCGACTGGA
 TTTAAGGTGGGCATTAACCTACCAGCCCCCACAGTGGTCCCCGGGGGAGACCTGGCCAAGGTGCAGCGGG
 CCGTGTGCATGCTGAGCAACACCACGGCATTGCGGAGGCTGGGCCCGCCTGGACCATAAGTTTCGATCT
 CATGTATGCCAAGCGGGCCTTTGTGCACTGGTACGTGGCGAAGGCATGGAAGAGGGGAGAGTTCTCTGAG
 GCCCGCAGGACCTGGCAGCTCTAGAGAAGGATTATGAAGAGGTGGGCGTGGATTCCGTGGAAGCTGAGG
 CTGAAGAAGCGGAAGAATAC

ACGCGTACGCGGGCGCTCGAGCAGAACTCATCTCAGAAGAGGATCTGGCAGCAAATGATATCTGGATT
 ACAAGGATGACGACGATAAGGTTTAA

Protein Sequence:

>RC209276 protein sequence
 Red=Cloning site Green=Tags(s)

MRECISIHVQAGVQIGNACWELYLEHGIQPDGQMPQSDKTIGGGDDSFNTFFSETGAGKHVPRAVFVDL
 EPTVVDEVRTGTYRQLFHPEQLITGKEDAANNYARGHYTIGKEIVDLVLDRIKRLADLCTGLQGFLIFHS
 FGGGTGSGFASLLMERLSVDYGGKSKLEFAIYPAPQVSTAVVEPYNSILTTHTTLEHSDCAFMDNEAIY
 DICRRNLDIERPTYTNLNLIGQIVSSITASLRFDGALNVDLTFQTNLVPYPRIFPLATYAPVISAER
 AYHEQLSVAEITNACFEPANQMVKYDPRHGKYMCCMLYRGDVVPKDVNAAIATIKTKRTIQFVDWCPTG
 FKVGINYQPPTVVPGGDLAKVQRAVCMLSNNTAIAEAWARLDHKFDLKYAKRAFVHWYVGEEMEEGEFSE
 AREDLAALAEKDYEEVGVDSVEAEAEEGEEY

TRTRPLEQKLISEEDLAANDILDYKDDDDKV

Chromatograms:

https://cdn.origene.com/chromatograms/mk6147_a09.zip

Restriction Sites:

Sgfl-Mlul

Cloning Scheme:


ACCN: NM_080386

ORF Size: 1350 bp

OTI Disclaimer: The molecular sequence of this clone aligns with the gene accession number as a point of reference only. However, individual transcript sequences of the same gene can differ through naturally occurring variations (e.g. polymorphisms), each with its own valid existence. This clone is substantially in agreement with the reference, but a complete review of all prevailing variants is recommended prior to use. [More info](#)

OTI Annotation: This clone was engineered to express the complete ORF with an expression tag. Expression varies depending on the nature of the gene.

Components: The ORF clone is ion-exchange column purified and shipped in a 2D barcoded Matrix tube containing 10ug of transfection-ready, dried plasmid DNA (reconstitute with 100 ul of water).

Reconstitution Method:

1. Centrifuge at 5,000xg for 5min.
2. Carefully open the tube and add 100ul of sterile water to dissolve the DNA.
3. Close the tube and incubate for 10 minutes at room temperature.
4. Briefly vortex the tube and then do a quick spin (less than 5000xg) to concentrate the liquid at the bottom.
5. Store the suspended plasmid at -20°C. The DNA is stable for at least one year from date of shipping when stored at -20°C.

RefSeq: [NM_080386.1](#), [NP_525125.1](#)

RefSeq Size: 1646 bp

RefSeq ORF: 1353 bp

Locus ID: 113457

UniProt ID: [Q13748](#)

Cytogenetics: 2q21.1

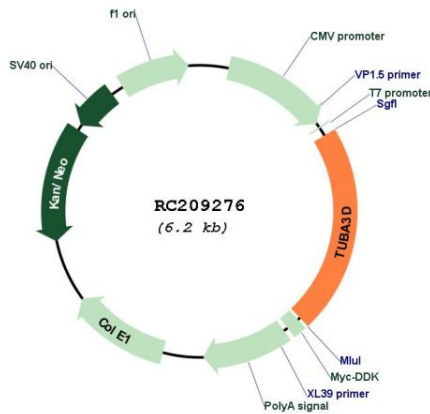
Protein Families: Druggable Genome

Protein Pathways: Gap junction, Pathogenic Escherichia coli infection

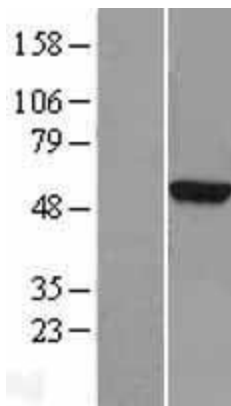
MW: 50 kDa

Gene Summary: This gene encodes a member of the alpha tubulin family. Tubulin is a major component of microtubules, which are composed of alpha- and beta-tubulin heterodimers and microtubule-associated proteins in the cytoskeleton. Microtubules maintain cellular structure, function in intracellular transport, and play a role in spindle formation during mitosis. [provided by RefSeq, Oct 2011]

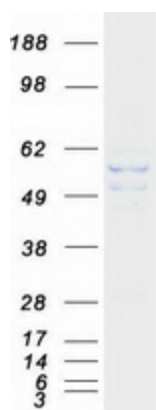
Product images:



Circular map for RC209276



Western blot validation of overexpression lysate (Cat# [LY403306]) using anti-DDK antibody (Cat# [TA50011-100]). Left: Cell lysates from untransfected HEK293T cells; Right: Cell lysates from HEK293T cells transfected with RC209276 using transfection reagent MegaTran 2.0 (Cat# [TT210002]).



Coomassie blue staining of purified TUBA3D protein (Cat# [TP309276]). The protein was produced from HEK293T cells transfected with TUBA3D cDNA clone (Cat# RC209276) using MegaTran 2.0 (Cat# [TT210002]).