

Product datasheet for **RC209275**

BACH1 (NM_001186) Human Tagged ORF Clone

Product data:

Product Type:	Expression Plasmids
Product Name:	BACH1 (NM_001186) Human Tagged ORF Clone
Tag:	Myc-DDK
Symbol:	BACH1
Synonyms:	BACH-1; BTBD24
Mammalian Cell Selection:	Neomycin
Vector:	pCMV6-Entry (PS100001)
E. coli Selection:	Kanamycin (25 ug/mL)



[View online »](#)

**ORF Nucleotide
Sequence:**

>RC209275 ORF sequence
 Red=Cloning site Blue=ORF Green=Tags(s)

TTTTGTAATACGACTCACTATAGGGCGGCCGGAATTCGTGCGACTGGATCCGGTACCGAGGAGATCTGCC
 GCC**CGCATCGCC**

ATGTCTCTGAGTGAGAACTCGGTTTTGCCTATGAATCTTCTGTGCATAGCACCAATGTTTTACTCAGCC
 TTAATGACCAGCGGAAGAAAGATGTGCTGTGCGATGTCACCATCTTTGTGGAGGGACAGCGGTTCCGCGC
 TCACCGGTCCGTGCTGGCGGCATGCAGCAGTTACTTCCAATCAAGAATCGTAGGCCAGGCTGATGGAGAG
 CTGAACATTACTTTCCAGAAGAGGTGACAGTTAAAGGATTTGAACCTTTAATTCAGTTTGCCTACTG
 CTAAACTGATTTAAGTAAAGAGAATGTGGATGAAGTGTGCAAAATGTGTGGAGTTTTAAGTGTACATAA
 TATTGAGGAATCTGCTTTCAGTTTCTGAAATTTAAGTTTTGGACTCCACTGCAGACCAGCAAGAATGC
 CCAAGAAAAAATGCTTTTCATCACACTGTCAGAAAACAGACCTAAACTTTCACTTTTGGACCAGAGGG
 ATCTAGAACTGATGAAGTGGAGGAATTTCTGGAAAATAAAAATGTTTCAGACTCCTCAGTGTAACTCCG
 CAGGTATCAAGGAAATGCAAAAGCCTCACCTCCTACAAGACAGTGCCAGTCAGACATATGAGTCCATG
 TGCTTAGAGAAGGATGCTGCTCTGGCCTTGCTTCTTTATGCCCAAATACAGAAAATCCAAAAAGCAT
 TTGGAAGTGCAGAGTCCGTACTGGGGAATCTAGTGTCAAAGACATTCATGCTTCTGTTCAGCCAATGA
 AAGGTCTGAAAATGAATGCCTGGGAGGAGTCCCGGAGTGTAGAGATTTGCAGGTGATGTTAAAATGTGAC
 GAAAGTAAATTAGCAATGGAACCTGAAGAAACGAAGAAAGATCCTGCTTCTCAGTGCCCAACTGAAAAAT
 CAGAAGTACTCCTTTCCCCACAATTTCTCCATAGACCTCATGGACTTTATTTCTTTGTCTTTTTACA
 CACATATGACCAATATGGTGACTTGAATTTTGTGGTATGCAAAACACAACAGTGTAAACAGAAAAGCCT
 TTGTCAGGTACAGACGTCCAAGAAAAACATTTGGTGAAGTCAAGATTTACCTTTGAAATCCGACTTGG
 GCACCAGGAAGATAGTAGTGTTCATCTAGTGATAGGAGTAGTGTGGAGCGAGAAGTGGCAGAACACCT
 AGCAAAAAGGCTTCTGGAGTGACATTTGCAGCACGGACACTCCTTGCCAAATGCAGTTATCACCTGCTGTG
 GCCAAAGATGGCTCAGAACAGATCTCACAGAAACGGTCTGAGTGTCCGTGGTTAGGTATCAGGATTAGTG
 AGAGCCCAGAACCAGGTCAAAGGACTTTCAACAATTAAGTTCTGTCAACTGCCCTTTTATAAGTACTCT
 GAGTACTGAAGGCTGTTCAAGCAATTTGGAAAATGGAAACGATGATTATGTTTCAGAACCCAGCAAGAA
 CCTTGCCCATATGCTTGTGTCATTAGCTTGGGAGACGACTCTGAGACGGACACCGAAGGAGACAGTGAAT
 CCTGTTACGCCAGAGAACAAGAATGTGAGGTAAAAGTCCATTCAATGCACAACGGATAATTTCACTGTC
 TCGAAATGATTTTCAGTCTTGTGAAAATGCACAAGCTTACTCCAGAACAGCTGGATTGTATCCATGAT
 ATTCGAAGAAGAAGTAAAACAGAATTGCTGCACAGCGCTGTGCAAGAGAAAACCTTGACTGTATACAGA
 ATCTTGAATCAGAAATTGAGAAGCTGCAAAGTGAAGGAGAGCTTGTGAAAGGAAAGAGATCACATTTT
 GTCAACTCTGGGTGAGACAAAGCAGAACCTAACTGGACTTTGCCAGAAAGTTTGTAAAGAAGCAGCTCTG
 AGTCAAGAACAAATACAGATACTCGCAAGTACTCAGCTGCAGATTGCCCACTTTCAATTTTAAATTTCTG
 AAAAAGATAAAAGTACTCCTGATGGTGAAGTGGCGTTACCATCAATTTTCAGTTTATCTGACCGGCTCC
 AGCAGTGTGCTCCCTGTGCCAGAGGAAACAGTGAAGCTGGCTACGCGCGAGGGCAGGAGTCCCAGCAG
 ATGTCCACAGCCACCTCTGAGCAAGCTGGGCTGCGGAACAGTGTGTCAGAGTGGTGGGATCTCAGATT
 TCTGTCAGCAGATGACTGATAAATGTACTACTGATGAG

ACGCGTACGCGGCCGCTCGAGCAGAACTCATCTCAGAAGAGGATCTGGCAGCAAATGATATCCTGGATT
 ACAAGGATGACGACGATAAGGTTTAA

Protein Sequence: >RC209275 protein sequence
 Red=Cloning site Green=Tags(s)

```
MSLSENSVFAYESSVHSTNVLLSLNDQRKKDVLCDVTFIVVEGQRFRAHRSVLAACSSYFHSRIVGQADGE
LNITLPEEVTVKGFEP LIQFAYTAKLILSKENVDEVCKVEFLSVHNIIEESCFQFLKFKFLDSTADQVEC
PRKKCFSSHCQKTDLKL SLLDQRDLETDEVEEFLENKNVQTPQCKLRRYQGNAKASPLQDSASQTYESM
CLEKDAALALPSLCPKYRKFKAFGTDRTGESSVKDIHASVQPNERSENECLGGVPECRDLQVMLKCD
ESKLAMEPEETKKDPASQCPTKESEVTFPHNSSIDPHGLYSL SLLHTYDQYGD LNFAGMQNTTVL TEKP
LSGTDVQEKTFGESQDLPLKSDLGTREDSVASSDRSSVEREVAEHLAKGFWSDICSTDTPCQMQLSPAV
AKDGSEQISQKRSECPWLGIRISESPEPGQRTFTT LSSVNCPISTLSTEGCSSNLEIGNDYVSEPPQE
PCPYACV ISLGGDSETDEGDSESCSAREQECEVKLPFNAQRIISLRNDFQSL LKMHKL TPEQLDCIHD
IRRRSKNRIAAQRCRKRKLD CIQNLSEIEKLQSEKESLLKERDHLSTLGETKQNL TGLCQKVCKEAAAL
SQEQIQILAKYSAADCPLSFLISEKDKSTPDGELALPSIFSLSDRPPAVLPPCARGNSEPGYARGQESQ
MSTATSEQAGPAEQCRQSGGISDFCQMQMDKCTTDE
```

TRTRP**LEQ****KLISEEDLAANDILDYKDDDDKV**

Chromatograms: https://cdn.origene.com/chromatograms/mk6155_g09.zip

Restriction Sites: SgfI-MluI

Cloning Scheme:

Cloning sites used for ORF Shuttling:



* The last codon before the Stop codon of the ORF

ACCN: NM_001186

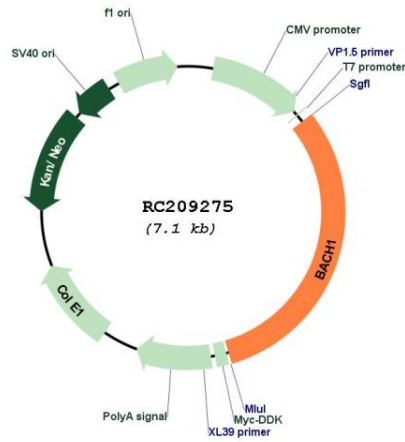
ORF Size: 2208 bp

OTI Disclaimer: The molecular sequence of this clone aligns with the gene accession number as a point of reference only. However, individual transcript sequences of the same gene can differ through naturally occurring variations (e.g. polymorphisms), each with its own valid existence. This clone is substantially in agreement with the reference, but a complete review of all prevailing variants is recommended prior to use. [More info](#)

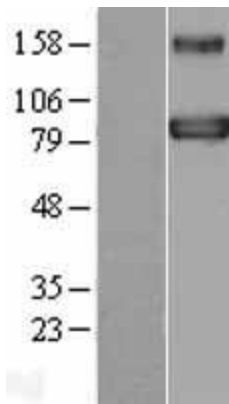
OTI Annotation: This clone was engineered to express the complete ORF with an expression tag. Expression varies depending on the nature of the gene.

Components:	The ORF clone is ion-exchange column purified and shipped in a 2D barcoded Matrix tube containing 10ug of transfection-ready, dried plasmid DNA (reconstitute with 100 ul of water).
Reconstitution Method:	<ol style="list-style-type: none">1. Centrifuge at 5,000xg for 5min.2. Carefully open the tube and add 100ul of sterile water to dissolve the DNA.3. Close the tube and incubate for 10 minutes at room temperature.4. Briefly vortex the tube and then do a quick spin (less than 5000xg) to concentrate the liquid at the bottom.5. Store the suspended plasmid at -20°C. The DNA is stable for at least one year from date of shipping when stored at -20°C.
RefSeq:	NM_001186.4
RefSeq Size:	5642 bp
RefSeq ORF:	2211 bp
Locus ID:	571
UniProt ID:	O14867
Cytogenetics:	21q21.3
Domains:	BTB, BRLZ
Protein Families:	Transcription Factors
MW:	82 kDa
Gene Summary:	This gene encodes a transcription factor that belongs to the cap'n'collar type of basic region leucine zipper factor family (CNC-bZip). The encoded protein contains broad complex, tramtrack, bric-a-brac/poxvirus and zinc finger (BTB/POZ) domains, which is atypical of CNC-bZip family members. These BTB/POZ domains facilitate protein-protein interactions and formation of homo- and/or hetero-oligomers. When this encoded protein forms a heterodimer with MafK, it functions as a repressor of Maf recognition element (MARE) and transcription is repressed. Multiple alternatively spliced transcript variants have been identified for this gene. [provided by RefSeq, May 2009]

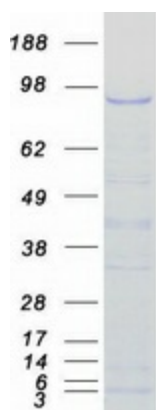
Product images:



Circular map for RC209275



Western blot validation of overexpression lysate (Cat# [LY400475]) using anti-DDK antibody (Cat# [TA50011-100]). Left: Cell lysates from untransfected HEK293T cells; Right: Cell lysates from HEK293T cells transfected with RC209275 using transfection reagent MegaTran 2.0 (Cat# [TT210002]).



Coomassie blue staining of purified BACH1 protein (Cat# [TP309275]). The protein was produced from HEK293T cells transfected with BACH1 cDNA clone (Cat# RC209275) using MegaTran 2.0 (Cat# [TT210002]).