

Product datasheet for RC209272

Factor D (CFD) (NM_001928) Human Tagged ORF Clone

Product data:

Product Type:	Expression Plasmids
Product Name:	Factor D (CFD) (NM_001928) Human Tagged ORF Clone
Tag:	Myc-DDK
Symbol:	Factor D
Synonyms:	ADIPSIN; ADN; DF; PFD
Mammalian Cell Selection:	Neomycin
Vector:	pCMV6-Entry (PS100001)
E. coli Selection:	Kanamycin (25 ug/mL)
ORF Nucleotide Sequence:	>RC209272 ORF sequence Red=Cloning site Blue=ORF Green=Tags(s)

TTTTGTAATACGACTCACTATAGGGCGGCCGGAATTCGTCGACTGGATCCGGTACCGAGGAGATCTGCC
GCC**CGATCGCC**

ATGCACAGCTGGGAGCGCCTGGCAGTTCTGGTCTCTAGGAGCGGCCGCTGCGCGGGCCGCCCGT
GTCGGATCCTGGGCGGCAGAGAGGCCGAGGCGCACGCGGCCCTACATGGCGTCGGTGCAGCTGAACGG
CGCGCACCTGTGCGGGCGCTCTGGTGGCGGAGCAGTGGGTGCTGAGCGCGGCCACTGCCTGGAGGAC
GCGGCCGACGGGAAGGTGCAGGTTCTCTGGGCGCGCACTCCCTGTCGACGCCGAGCCCTCAAGCGCC
TGTACGACGTGCTCCGCGCAGTGCCCCACCCGGACAGCCAGCCGACACCATCGACCACGACCTCCTGCT
GCTACAGCTGTGCGAGAAGGCCACACTGGGCCCTGCTGTGCGCCCTGCCCTGGCAGCGCGTGGACCGC
GACGTGGCACCGGAACTCTCTGCGACGTGGCCGGCTGGGGCATAGTCAACCACGCGGGCCGCCCGCG
ACAGCTGCAGCACGTGCTCTTGCCAGTGTGGACCGCGCCACCTGCAACCGGCGCACGCCACGACGG
CGCCATCACCGAGCGCTTGATGTGCGCGGAGAGCAATCGCCGGGACAGCTGCAAGGGTACTCCGGGGG
CCGCTGGTGTGCGGGGGCGTGCTCGAGGGCGTGGTACCTCGGGCTCGCGGTTTGGCGCAACCGCAAGA
AGCCCGGGATCTACACCCGCGTGGCGAGCTATGCGGCCCTGGATCGACAGCGTCTGGCC

ACGCGTACGCGGCCGCTCGAGCAGAACTCATCTCAGAAGAGGATCTGGCAGCAAATGATATCCTGGATT
ACAAGGATGACGACGATAAGGTTTAA



[View online »](#)

Protein Sequence: >RC209272 protein sequence
 Red=Cloning site Green=Tags(s)

MHSWERLAVLVLLGAAACAAPRGRILGGREAEAHARPYMASVQLNGAHLCGGVLVAEQWVLSAAHCLED
 AADGKVQVLLGAHLSQPEPSKRLYDVLRAVPHPSQPDTIDHDLQLLSEKATLGPVAVRPLPWQRVDR
 DVAPGTLCDVAGWGI VNHAGRRPDSLQHVLLPVLDRATCNRRTHHDGAI TERLMCAESNRRDSCKGDSGG
 PLVCGGVLEGVVTSGSRVCGNRKKPGIYTRVASYAAWIDSVLA

TRTRPLEQKLISEEDLAANDILDYKDDDDKV

Chromatograms: https://cdn.origene.com/chromatograms/mk6791_d07.zip

Restriction Sites: SgfI-MluI

Cloning Scheme:

Cloning sites used for ORF Shuttling:



* The last codon before the Stop codon of the ORF

ACCN: NM_001928

ORF Size: 759 bp

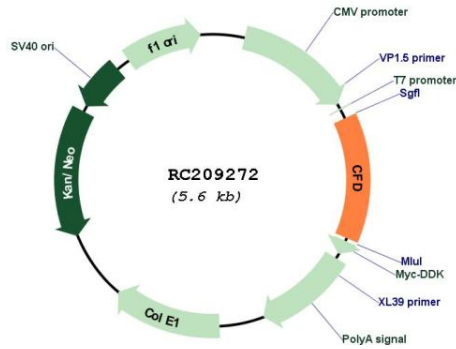
OTI Disclaimer: The molecular sequence of this clone aligns with the gene accession number as a point of reference only. However, individual transcript sequences of the same gene can differ through naturally occurring variations (e.g. polymorphisms), each with its own valid existence. This clone is substantially in agreement with the reference, but a complete review of all prevailing variants is recommended prior to use. [More info](#)

OTI Annotation: This clone was engineered to express the complete ORF with an expression tag. Expression varies depending on the nature of the gene.

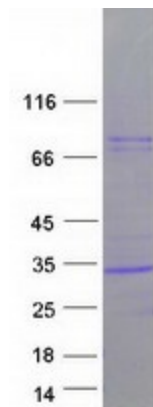
Components: The ORF clone is ion-exchange column purified and shipped in a 2D barcoded Matrix tube containing 10ug of transfection-ready, dried plasmid DNA (reconstitute with 100 ul of water).

Reconstitution Method:	<ol style="list-style-type: none">1. Centrifuge at 5,000xg for 5min.2. Carefully open the tube and add 100ul of sterile water to dissolve the DNA.3. Close the tube and incubate for 10 minutes at room temperature.4. Briefly vortex the tube and then do a quick spin (less than 5000xg) to concentrate the liquid at the bottom.5. Store the suspended plasmid at -20°C. The DNA is stable for at least one year from date of shipping when stored at -20°C.
RefSeq:	NM_001928.4
RefSeq Size:	1173 bp
RefSeq ORF:	762 bp
Locus ID:	1675
UniProt ID:	P00746
Cytogenetics:	19p13.3
Domains:	Tryp_SPc
Protein Families:	Druggable Genome, Protease, Secreted Protein
Protein Pathways:	Complement and coagulation cascades
MW:	27 kDa
Gene Summary:	<p>This gene encodes a member of the S1, or chymotrypsin, family of serine peptidases. This protease catalyzes the cleavage of factor B, the rate-limiting step of the alternative pathway of complement activation. This protein also functions as an adipokine, a cell signaling protein secreted by adipocytes, which regulates insulin secretion in mice. Mutations in this gene underlie complement factor D deficiency, which is associated with recurrent bacterial meningitis infections in human patients. Alternative splicing of this gene results in multiple transcript variants. At least one of these variants encodes a preproprotein that is proteolytically processed to generate the mature protease. [provided by RefSeq, Nov 2015]</p>

Product images:



Circular map for RC209272



Coomassie blue staining of purified CFD protein (Cat# [TP309272]). The protein was produced from HEK293T cells transfected with CFD cDNA clone (Cat# RC209272) using MegaTran 2.0 (Cat# [TT210002]).