

## Product datasheet for **RC209269**

### **FOXN2 (NM\_002158) Human Tagged ORF Clone**

#### **Product data:**

Product Type:	Expression Plasmids
Product Name:	FOXN2 (NM_002158) Human Tagged ORF Clone
Tag:	Myc-DDK
Symbol:	FOXN2
Synonyms:	HTLF
Mammalian Cell Selection:	Neomycin
Vector:	pCMV6-Entry (PS100001)
E. coli Selection:	Kanamycin (25 ug/mL)



[View online »](#)

**ORF Nucleotide Sequence:**

>RC209269 ORF sequence  
 Red=Cloning site Blue=ORF Green=Tags(s)

TTTTGTAATACGACTCACTATAGGGCGGCCGGAATTCGTCGACTGGATCCGGTACCGAGGAGATCTGCC  
 GCC**GCGATCGCC**

ATGGGTCCAGTAATTGGAATGACTCCAGATAAGAGAGCTGAAACCCAGGAGCTGAAAAGATTGCAGGAT  
 TAAGCCAGATTTACAAAATGGGAAGCTTGCTGAAGCTGTTGATGCTGCCAGGCCGAAGGCCACTCTAGT  
 GGACAGTGAGTCAGCAGATGATGAACTCACAACTTGAAGTGGCTTCATGAAAGCACTAATCTTCTAACA  
 AACTTCAGCCTCGGAAGTGGGGTCTTCCAATTGTTAGTCCATTGTATGACATAGAGGGAGATGATGTGC  
 CATCCTTTGGACCAGTTGCTACCAGAACCAGAAAAAATCAGCGACTTCAAAGCCCCATACTCCTT  
 TAGTCTTCTCATTATATGGCCATTGAGCACTCTCAAATAAATGTTTGCCTGTCAAAGAAATTTATAGC  
 TGGATTCTGGACCATTTCCATATTTGCTACTGCACCAACAGGCTGGAAGAATTCTGTTTCGACATAATC  
 TGTCCCTGAATAAATGTTTTAGAAAAGTGGAAAGAAGCCATGGCAAGTTAATGGAAAAGTTTCTTATG  
 GTGTGTTGATCCGGAATATAACCCAATCTTATCCAGGCACTGAAGAAGCAACCTTTTTCTTCAGCATCT  
 TCACAAAATGGTTCTTTATCACCTCACTATTTAAGCTCTGTAATCAAGCAGAACCAGGTGCGAAAACCTCA  
 AAGAATCTGATATTGATGCTGCTGCTGCAATGATGCTTTTAAATCTTCTATAGAACAAGGAATTTTAGA  
 ATGTGAGAAGCCTCTTCCTCTTAAAACAGCATTGCAAAAAAGAGGAGTTACGGCAATGCATTTTCATCAT  
 CCCAGTGTGTACGATTACAAGAGAGTGATTCTTTAGCCACCAGCATTGATCCAAAAGAAGATCACAAAT  
 ACAGTGAAGTAGCATGGCAGCACAGCGTTGTGCATCCAGGCTAGCGTGTCTTCTGTCTTCTGTGGA  
 TGAGGTATATGAATTTATCCAAAGAATAGTACGTGGGAAGTATGGCAGTGAAGGATTTACAGTGAA  
 GAAGATACAGACGTTGATTATGAAGATGATCCTCTTGGAGACAGTGGCTATGCATCACAGCCTTGTGCAA  
 AAATCTCTGAAAAAGGGCAGTCAGGCAAAAAGATGCGAAAAACAGACATGTCAAGAAATTTGATGAGGAGCT  
 CAAAGAGCAGCTGGATCTCTGCTCCACCTTGTGGAATTCGTACATGTTTAGGTTCCCTAATAAGTACT  
 GCAAAGACACAAAATCAAAGCAACGAAAAAA

**ACGCGT**ACGCGGCCGCTCGAGCAGAACTCATCTCAGAAGAGGATCTGGCAGCAAATGATATCCTGGATT  
 ACAAGGATGACGACGATAAGGTTTAA

**Protein Sequence:**

>RC209269 protein sequence  
 Red=Cloning site Green=Tags(s)

MGPVIGMTPDKRAETPGAEKIAGLSQIYKMGSLPEAVDAARPKATLVDSSESADDELNLNWLHESTNLLT  
 NFSLGSGLPIVSPLYDIEGDDVPSFGPACYQNPEKKSATSKPPYSFLLIYMAIEHSPNKCLPVKEIYS  
 WILDHFPYFATAPTGWKNSVRHNLNLNCFQKVERSHGKVNKGSLWCVDPEYKPNLIQALKKQPFSSAS  
 SQNGSLSPHYLSSVIKQNVRLKESDIDAAAAMLLNTSIEQGILECEKPLPLKTALQKKRSYGNFHH  
 PSAVRLQESDSLATSIDPKEDHNYSSSMAAQRCSRSSVSSLSSVDEVYEFIPKNSHVGSDBGSEGFHSE  
 EDTDVDYEDDPLGDSGYASQPCAKISEKGQSGKMRKQTQEQIDEELKEAAGSLLHLAGIRTCLGSLIST  
 AKTQNQKQRKK

**TR**TRPLEQKLISEEDLAANDILDYKDDDDKV

**Chromatograms:**

[https://cdn.origene.com/chromatograms/mk6512\\_c06.zip](https://cdn.origene.com/chromatograms/mk6512_c06.zip)

**Restriction Sites:**

Sgfl-Mlul

**Cloning Scheme:**


**ACCN:** NM\_002158

**ORF Size:** 1293 bp

**OTI Disclaimer:** The molecular sequence of this clone aligns with the gene accession number as a point of reference only. However, individual transcript sequences of the same gene can differ through naturally occurring variations (e.g. polymorphisms), each with its own valid existence. This clone is substantially in agreement with the reference, but a complete review of all prevailing variants is recommended prior to use. [More info](#)

**OTI Annotation:** This clone was engineered to express the complete ORF with an expression tag. Expression varies depending on the nature of the gene.

**Components:** The ORF clone is ion-exchange column purified and shipped in a 2D barcoded Matrix tube containing 10ug of transfection-ready, dried plasmid DNA (reconstitute with 100 ul of water).

- Reconstitution Method:**
1. Centrifuge at 5,000xg for 5min.
  2. Carefully open the tube and add 100ul of sterile water to dissolve the DNA.
  3. Close the tube and incubate for 10 minutes at room temperature.
  4. Briefly vortex the tube and then do a quick spin (less than 5000xg) to concentrate the liquid at the bottom.
  5. Store the suspended plasmid at -20°C. The DNA is stable for at least one year from date of shipping when stored at -20°C.

**Note:** Plasmids are not sterile. For experiments where strict sterility is required, filtration with 0.22um filter is required.

**RefSeq:** [NM\\_002158.4](#)

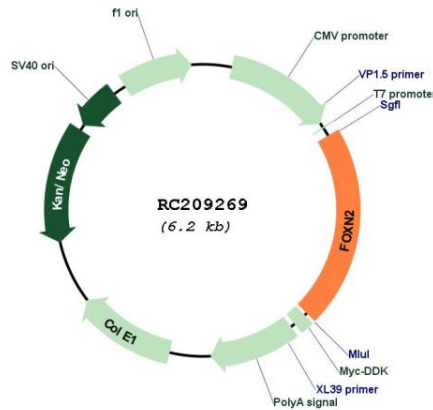
**RefSeq Size:** 5472 bp

**RefSeq ORF:** 1296 bp

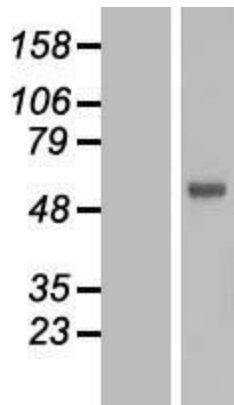
**Locus ID:** 3344

**UniProt ID:** [P32314](#)  
**Cytogenetics:** 2p16.3  
**Domains:** FH  
**Protein Families:** Transcription Factors  
**MW:** 47.2 kDa  
**Gene Summary:** This gene encodes a forkhead domain binding protein and may function in the transcriptional regulation of the human T-cell leukemia virus long terminal repeat. [provided by RefSeq, Jul 2008]

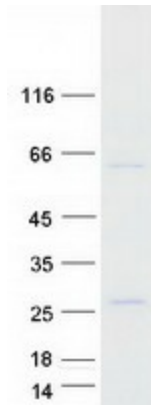
### Product images:



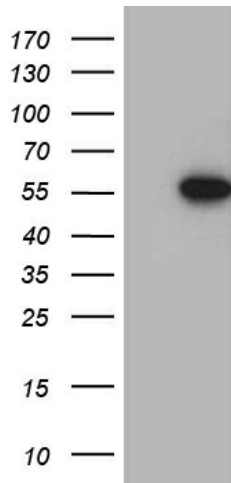
Circular map for RC209269



Western blot validation of overexpression lysate (Cat# [LY419494]) using anti-DDK antibody (Cat# [TA50011-100]). Left: Cell lysates from un-transfected HEK293T cells; Right: Cell lysates from HEK293T cells transfected with RC209269 using transfection reagent MegaTran 2.0 (Cat# [TT210002]).



Coomassie blue staining of purified FOXN2 protein (Cat# [TP309269]). The protein was produced from HEK293T cells transfected with FOXN2 cDNA clone (Cat# RC209269) using MegaTran 2.0 (Cat# [TT210002]).



HEK293T cells were transfected with the pCMV6-ENTRY control (Cat# [PS100001], Left lane) or pCMV6-ENTRY FOXN2 (Cat# RC209269, Right lane) cDNA for 48 hrs and lysed. Equivalent amounts of cell lysates (5 ug per lane) were separated by SDS-PAGE and immunoblotted with anti-FOXN2 (Cat# [TA812353]). Positive lysates [LY419494] (100ug) and [LC419494] (20ug) can be purchased separately from OriGene.