

Product datasheet for **RC209268**

IGFBP1 (NM_000596) Human Tagged ORF Clone

Product data:

Product Type:	Expression Plasmids
Product Name:	IGFBP1 (NM_000596) Human Tagged ORF Clone
Tag:	Myc-DDK
Symbol:	IGFBP1
Synonyms:	AFBP; hIGFBP-1; IBP1; IGF-BP25; PP12
Mammalian Cell Selection:	Neomycin
Vector:	pCMV6-Entry (PS100001)
E. coli Selection:	Kanamycin (25 ug/mL)
ORF Nucleotide Sequence:	>RC209268 ORF sequence Red=Cloning site Blue=ORF Green=Tags(s)

TTTTGTAATACGACTCACTATAGGGCGGCCGGAATTCGTCGACTGGATCCGGTACCGAGGAGATCTGCC
GCC**CGATCGCC**

ATGTCAGAGGTCCCCGTTGCTCGCTGGCTGGTACTGCTCCTGCTGACTGTCCAGGTCGGCGTGACAG
CCGGCGCTCCGTGGCAGTGCAGCGCCCTGCTCCGCCGAGAAGCTCGCGCTCTGCCCGCGGTGTCCGCCTC
GTGCTCGGAGGTACCCGGTCCGCCGGCTGCGGCTGTTGCCCGATGTGCGCCCTGCCTCTGGGCGCCGCG
TGGCGCTGGCGACTGCACGCTGCGCCCGGGACTCAGTTGCCGCGCTGCCGGGGAGCAGCAACCTC
TGCACGCCCTCACCCGCGCCAAGGCGCCTGCGTGCAGGAGTCTGACGCCTCCGCTCCCCATGCTGCAGA
GGCAGGGAGCCCTGAAAGCCAGAGAGCACGGAGATAACTGAGGAGGAGCTCCTGGATAATTTCCATCTG
ATGGCCCCTTCTGAAGAGGATCATTCCATCCCTTGGGACGCCATCAGTACCTATGATGGCTCGAAGGCTC
TCCATGTACCAACATCAAAAAATGGAAGGAGCCCTGCCGAATAGAACTCTACAGAGTCGTAGAGAGTTT
AGCCAAGGCACAGGAGACATCAGGAGAAGAAATTTCAAATTTTACCTGCCAAACTGCAACAAGAATGGA
TTTTATCACAGCAGACAGTGTGAGACATCCATGGATGGAGAGGCGGGACTCTGCTGGTGCCTACCCCT
GGAATGGGAAGAGGATCCCTGGGTCTCCAGAGATCAGGGGAGACCCCAACTGCCAGATATATTTAATGT
ACAAAAC

ACGCGTACGCGGCCGCTCGAGCAGAAACTCATCTCAGAAGAGGATCTGGCAGCAAATGATATCCTGGATT
ACAAGGATGACGACGATAAGGTTTAA



[View online »](#)

Protein Sequence: >RC209268 protein sequence
Red=Cloning site Green=Tags(s)

MSEVPPVARVWLVLLLLTVQVGVTAGAPWQCAPCSAEKLALCPPVSASCSEVTRSAGCGCCPMCALPLGAA
 CGVATARCARGLSCRALPGEQQPLHALTRGQACVQESDASAPHAEEAGSPESPESTEITEEELLDNFHL
 MAPSEEDHSIPWDAISTYDGSKALHVTNIKKWKEPCRIELYRVVESLAKAQETSGEEISKFYLPNCNKNG
 FYHSRQCETSMDSMDGEAGLCWCVPWNGKRIPGSPEIRGDPNCQIYFNVQN

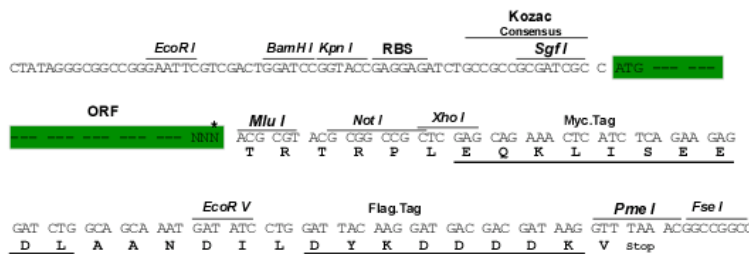
TRTRPLEQKLISEEDLAANDILDYKDDDDKV

Chromatograms: https://cdn.origene.com/chromatograms/mk6142_f08.zip

Restriction Sites: SgfI-MluI

Cloning Scheme:

Cloning sites used for ORF Shuttling:



* The last codon before the Stop codon of the ORF

ACCN: NM_000596

ORF Size: 777 bp

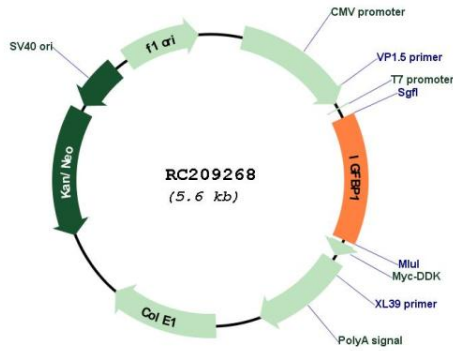
OTI Disclaimer: Due to the inherent nature of this plasmid, standard methods to replicate additional amounts of DNA in E. coli are highly likely to result in mutations and/or rearrangements. Therefore, OriGene does not guarantee the capability to replicate this plasmid DNA. Additional amounts of DNA can be purchased from OriGene with batch-specific, full-sequence verification at a reduced cost. Please contact our customer care team at custsupport@origene.com or by calling 301.340.3188 option 3 for pricing and delivery.

The molecular sequence of this clone aligns with the gene accession number as a point of reference only. However, individual transcript sequences of the same gene can differ through naturally occurring variations (e.g. polymorphisms), each with its own valid existence. This clone is substantially in agreement with the reference, but a complete review of all prevailing variants is recommended prior to use. [More info](#)

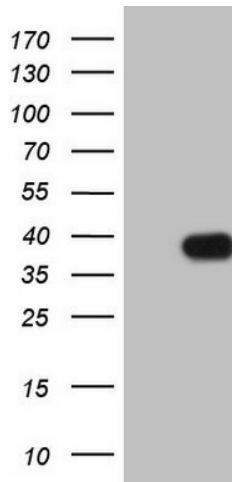
OTI Annotation: This clone was engineered to express the complete ORF with an expression tag. Expression varies depending on the nature of the gene.

Components:	The ORF clone is ion-exchange column purified and shipped in a 2D barcoded Matrix tube containing 10ug of transfection-ready, dried plasmid DNA (reconstitute with 100 ul of water).
Reconstitution Method:	<ol style="list-style-type: none">1. Centrifuge at 5,000xg for 5min.2. Carefully open the tube and add 100ul of sterile water to dissolve the DNA.3. Close the tube and incubate for 10 minutes at room temperature.4. Briefly vortex the tube and then do a quick spin (less than 5000xg) to concentrate the liquid at the bottom.5. Store the suspended plasmid at -20°C. The DNA is stable for at least one year from date of shipping when stored at -20°C.
Note:	Plasmids are not sterile. For experiments where strict sterility is required, filtration with 0.22um filter is required.
RefSeq:	NM_000596.4
RefSeq Size:	1660 bp
RefSeq ORF:	780 bp
Locus ID:	3484
UniProt ID:	P08833
Cytogenetics:	7p12.3
Domains:	thyroglobulin_1, IB
Protein Families:	Adult stem cells, Druggable Genome, Embryonic stem cells, ES Cell Differentiation/IPS, Secreted Protein
MW:	27.9 kDa
Gene Summary:	This gene is a member of the insulin-like growth factor binding protein (IGFBP) family and encodes a protein with an IGFBP N-terminal domain and a thyroglobulin type-I domain. The encoded protein, mainly expressed in the liver, circulates in the plasma and binds both insulin-like growth factors (IGFs) I and II, prolonging their half-lives and altering their interaction with cell surface receptors. This protein is important in cell migration and metabolism. Low levels of this protein may be associated with impaired glucose tolerance, vascular disease and hypertension in human patients. [provided by RefSeq, Aug 2017]

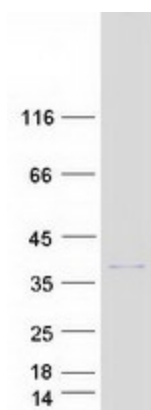
Product images:



Circular map for RC209268



HEK293T cells were transfected with the pCMV6-ENTRY control (Cat# [PS100001], Left lane) or pCMV6-ENTRY IGF1P1 (Cat# RC209268, Right lane) cDNA for 48 hrs and lysed. Equivalent amounts of cell lysates (5 ug per lane) were separated by SDS-PAGE and immunoblotted with anti-IGFBP1 (Cat# [TA808733])(1:2000). Positive lysates [LY400199] (100ug) and [LC400199] (20ug) can be purchased separately from OriGene.



Coomassie blue staining of purified IGFBP1 protein (Cat# [TP309268]). The protein was produced from HEK293T cells transfected with IGFBP1 cDNA clone (Cat# RC209268) using MegaTran 2.0 (Cat# [TT210002]).