

Product datasheet for **RC209266**

Prolactin Receptor (PRLR) (NM_000949) Human Tagged ORF Clone

Product data:

Product Type:	Expression Plasmids
Product Name:	Prolactin Receptor (PRLR) (NM_000949) Human Tagged ORF Clone
Tag:	Myc-DDK
Symbol:	Prolactin Receptor
Synonyms:	HPRL; hPRLrI; MFAB; RI-PRLR
Mammalian Cell Selection:	Neomycin
Vector:	pCMV6-Entry (PS100001)
E. coli Selection:	Kanamycin (25 ug/mL)



[View online »](#)

ORF Nucleotide Sequence:

>RC209266 ORF sequence
 Red=Cloning site Blue=ORF Green=Tags(s)

TTTTGTAATACGACTCACTATAGGGCGGCCGGGAATTCGTCGACTGGATCCGGTACCGAGGAGATCTGCC
 GCC**CGCATCGCC**

ATGAAGGAAAATGTGGCATCTGCAACCGTTTTCTACTCTGCTACTTTTTCTCAACACCTGCCTTCTGAATG
 GACAGTTACCTCCTGGAAAACCTGAGATCTTTAAATGTCGTTCTCCCAATAAGGAAACATTCACCTGCTG
 GTGGAGCCTGGGACAGATGGAGGACTTCTACCAATTATTCACTGACTTACCACAGGGAAGGAGAGACA
 CTCATGCATGAATGTCCAGACTACATAACCGGTGGCCCAACTCCTGCCACTTTGGCAAGCAGTACACCT
 CCATGTGGAGGACATACATCATGATGGTCAATGCCACTAACAGATGGGAAGCAGTTTCTCGGATGAACT
 TTATGTGGACGTGACTTACATAGTTCAGCCAGACCCTCCTTTGGAGCTGGCTGTGGAAAGTAAAACAGCCA
 GAAGACAGAAAACCTACCTGTGGATTAATGGTCTCCACCTACCCTGATTGACTTAAAACTGGTTGGT
 TCACGCTCCTGTATGAAATTCGATTAACCCGAGAAAGCAGCTGAGTGGGAGATCCATTTTCTGGGCA
 GCAAACAGAGTTAAGATTCTCAGCCTACATCCAGGACAGAAATACCTTGTCCAGTTTCGCTGCAAACCA
 GACCATGGATACTGGAGTGCATGGAGTCCAGCAGCCTTATTGATACCTAGTACTTACCATGAATG
 ATACAACCGTGTGGATCTCTGTGGCTGTCTTTCTGCTGTCATCTGTTTGATTATTGCTGGGCAGTGGC
 TTTGAAGGGCTATAGCATGGTGAAGTGCATCTTTCCGCCAGTTTCTGGGCCAAAAATAAAAGGATTTGAT
 GCTCATCTGTTGGAGAAGGGCAAGTCTGAAGAAGTACTGAGTGCCTTGGGATGCCAAGACTTTCTCCCA
 CTTCTGACTATGAGGACTTGTGGTGGAGTATTTAGAAGTAGATAGTGGAGACCAGCATCTAATGTC
 AGTCCATTCAAAAGAACCCCAAGTCAAGGTATGAAACCCACATACCTGGATCCTGACTGACTCAGGC
 CGGGGGAGCTGTGACAGCCCTCCCTTTTGTCTGAAAAGTGTGAGGAACCCAGGCCAATCCCTCCACAT
 TCTATGATCCTGAGGTCATTGAGAAGCCAGAGAATCCTGAAACAACCCACACTGGGACCCCAAGTGCAT
 AAGCATGGAAGGCAAAATCCCTATTTTTCATGCTGGTGGATCCAATGTTCAACATGGCCCTTACCACAG
 CCCAGCCAGCACAAACCCAGATCCTCTTACCACAATTTACTGATGTGTGTGAGCTGGCTGTGGCCCTG
 CAGGTGCACCGGCCACTCTGTTGAATGAAGCAGGTAAAGATGCTTTAAAACTCTCAAACCATTAAGTC
 TAGAGAAGAGGAAAGGCAACCCAGCAGAGGGAGGTAGAAAGTTCATTCTGAGACTGACCAGGATACG
 CCCTGGCTGTGCCCCAGGAGAAAACCCCTTTGGCTCCGCTAAACCTTGGATTATGTGGAGATTACA
 AGGTCAACAAAGATGGTGCATTATCATTGCTACCAAAACAGAGAGAGAACAGCGGCAAGCCCAAGAAGCC
 CGGGACTCCTGAGAACAAATAAGGAGTATGCCAAGGTGTCCGGGGTATGGATAACAACATCCTGGTGTG
 GTGCCAGATCCACATGCTAAAAACGTGGCTTGCTTTGAAGAATCAGCCAAAGAGGCCCCACCATCACTTG
 AACAGAATCAAGCTGAGAAAGCCCTGGCCAATCACTGCAACATCAAGCAAGTGCAGGCTCCAGCTGGG
 TGTTTTGGATTACCTGGATCCCGCATGTTTTACACTCCTTTTAC

ACGCGTACGCGGCCGCTCGAGCAGAAACTCATCTCAGAAGAGGATCTGGCAGCAAATGATATCCTGGATT
 ACAAGGATGACGACGATAAGGTTTAA

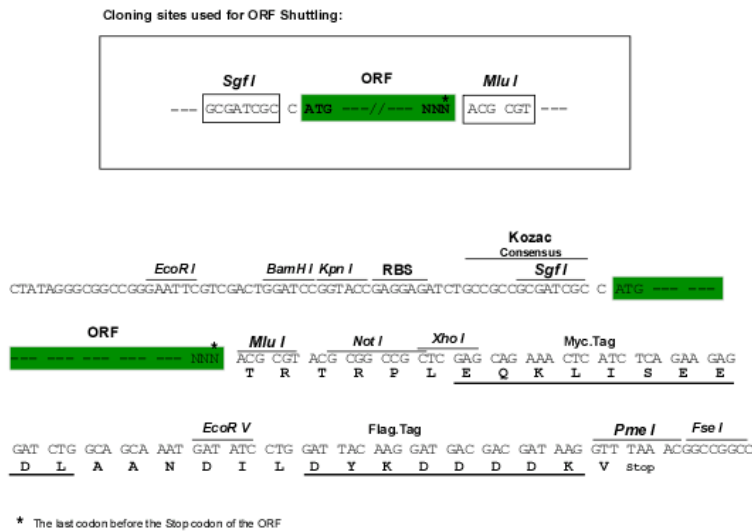
Protein Sequence:

>RC209266 protein sequence
 Red=Cloning site Green=Tags(s)

MKENVASATVFTLLLFLNLTCLLNGQLPPGKPEIFKCRSPNKETFTCWWRPGTDGGLPTNYSLYHREGET
 LMHECPDYITGGPNSCHFQYTSWRTYIMMVNATNQMGSSFDEL YVDVTYIVQDPDPLELAVEVKQP
 EDRKPYLWIKWSPPTLIDLKTGWFTLLYEIRLKPEKAAEWEIHFAGQTEFKILSLHPGQKYLQVVRCKP
 DHGYWSAWSPATFIQIPSDFTMNDTTVWISVAVLSAVICLIIVWAVALKGYSMVTCIFPPVPGPKIKGFD
 AHLLEKKGSEELL SALGCQDFPPTSDYEDLLVEYLEVDDSEDQHLMSVHSKEHPSQGMKPTYLDPDSDG
 RGS CDSP SLLSEKCEEPQANPSTFYDPEVIEKPENPETHTWDPQCSMEGKIPYFHAGGSKCSTWPLPQ
 PSQHNPSSYHNITDVCELAVGPAGAPATLLNEAGKDALKSSQTIKSREEGKATQQREVESFHSETDQDT
 PWLLPQEKTPFGSAKPLDYVEIHKVKNKGALSLLPKQRENSGKPKKPGTPENKEYAKVSGVMDNLLVL
 VPDPAKNVACFEESAKEAPPSLEQNQAELANFATSSKRLQLGGLDYLDPACTHFSFH

TRTRPLEQKLI SEEDLAANDILDYKDDDDKV

Chromatograms: https://cdn.origene.com/chromatograms/mk6236_d03.zip
 Restriction Sites: SgfI-MluI
 Cloning Scheme:



ACCN: NM_000949

ORF Size: 1866 bp

OTI Disclaimer: Due to the inherent nature of this plasmid, standard methods to replicate additional amounts of DNA in E. coli are highly likely to result in mutations and/or rearrangements. Therefore, OriGene does not guarantee the capability to replicate this plasmid DNA. Additional amounts of DNA can be purchased from OriGene with batch-specific, full-sequence verification at a reduced cost. Please contact our customer care team at custsupport@origene.com or by calling 301.340.3188 option 3 for pricing and delivery.

The molecular sequence of this clone aligns with the gene accession number as a point of reference only. However, individual transcript sequences of the same gene can differ through naturally occurring variations (e.g. polymorphisms), each with its own valid existence. This clone is substantially in agreement with the reference, but a complete review of all prevailing variants is recommended prior to use. [More info](#)

OTI Annotation: This clone was engineered to express the complete ORF with an expression tag. Expression varies depending on the nature of the gene.

Components: The ORF clone is ion-exchange column purified and shipped in a 2D barcoded Matrix tube containing 10ug of transfection-ready, dried plasmid DNA (reconstitute with 100 ul of water).

Reconstitution Method:

1. Centrifuge at 5,000xg for 5min.
2. Carefully open the tube and add 100ul of sterile water to dissolve the DNA.
3. Close the tube and incubate for 10 minutes at room temperature.
4. Briefly vortex the tube and then do a quick spin (less than 5000xg) to concentrate the liquid at the bottom.
5. Store the suspended plasmid at -20°C. The DNA is stable for at least one year from date of shipping when stored at -20°C.

RefSeq: [NM_000949.7](#)

RefSeq Size: 11694 bp

RefSeq ORF: 1869 bp

Locus ID: 5618

UniProt ID: [P16471](#)

Cytogenetics: 5p13.2

Domains: FN3

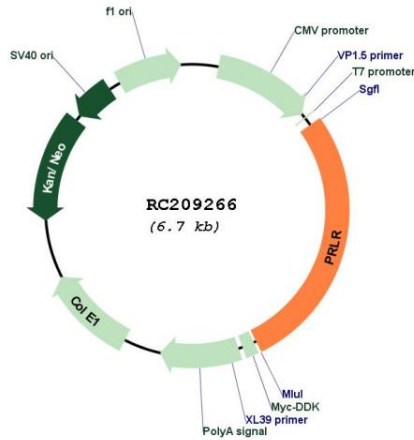
Protein Families: Druggable Genome, Transmembrane

Protein Pathways: Cytokine-cytokine receptor interaction, Jak-STAT signaling pathway, Neuroactive ligand-receptor interaction

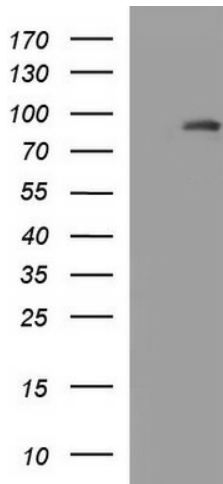
MW: 69.5 kDa

Gene Summary: This gene encodes a receptor for the anterior pituitary hormone, prolactin, and belongs to the type I cytokine receptor family. Prolactin-dependent signaling occurs as the result of ligand-induced dimerization of the prolactin receptor. Several alternatively spliced transcript variants encoding different membrane-bound and soluble isoforms have been described for this gene, which may function to modulate the endocrine and autocrine effects of prolactin in normal tissue and cancer. [provided by RefSeq, Feb 2011]

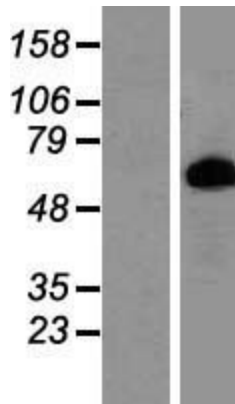
Product images:



Circular map for RC209266



HEK293T cells were transfected with the pCMV6-ENTRY control (Cat# [PS100001], Left lane) or pCMV6-ENTRY PRLR (Cat# RC209266, Right lane) cDNA for 48 hrs and lysed. Equivalent amounts of cell lysates (5 ug per lane) were separated by SDS-PAGE and immunoblotted with anti-PRLR antibody (Cat# [TA590773]). Positive lysates [LY424444] (100ug) and [LC424444] (20ug) can be purchased separately from OriGene.



Western blot validation of overexpression lysate (Cat# [LY424444]) using anti-DDK antibody (Cat# [TA50011-100]). Left: Cell lysates from untransfected HEK293T cells; Right: Cell lysates from HEK293T cells transfected with RC209266 using transfection reagent MegaTran 2.0 (Cat# [TT210002]).