

Product datasheet for RC209265

PRRG1 (NM_000950) Human Tagged ORF Clone

Product data:

Product Type:	Expression Plasmids
Product Name:	PRRG1 (NM_000950) Human Tagged ORF Clone
Tag:	Myc-DDK
Symbol:	PRRG1
Synonyms:	PRGP1
Mammalian Cell Selection:	Neomycin
Vector:	pCMV6-Entry (PS100001)
E. coli Selection:	Kanamycin (25 ug/mL)
ORF Nucleotide Sequence:	>RC209265 ORF sequence Red=Cloning site Blue=ORF Green=Tags(s)

TTTTGTAATACGACTCACTATAGGGCGGCCGGAATTCGTCGACTGGATCCGGTACCGAGGAGATCTGCC
GCC**CGATCGCC**

ATGGGGAGGGTTTTCTCACGGGAGAAAAAGCCAATTCATATTTAAAACGCTACCCAAGAGCTAATGGGT
TTTTTGAAGAAATAAGACAGGGCAACATTGAGCGTGAGTGCAAAGAAGAATTCTGTACATTTGAAGAAGC
AAGAGAAGCTTTTAAAAATAATGAAAAACTAAGGAGTTTTGGAGCACCTACACAAAAGCGCAACAAGGG
GAGAGTAACCGAGGAAGTACTGGTTTCAGTTTTACCTTACCTTTCCGTTAATCTTTGGCCTCTTCATTA
TCCTCCTTGTCATTTTCTAATCTGGAGATGCTTCCTAAGAAACAAAACCTCGTAGACAGACAGTGACTGA
AGGCCACATTCCTTTCCCTCAGCACCTTAATATTATCACCCACCCCCCACCAGATGAAGTGTGGTGC
AGCAGTGGATTGTCTCCAGGCTTCTGGGATATGTAGTTGGGCGCTCAGATTCCTGCTCTACTCGCCTGT
CCAATTGTGATCCCCGCCAACCTATGAGGAAGCCACTGGCCAAGTGAACCTGCAGAGGAGTGAACAGA
ACCTCATTTAGACCCACCCAGAGTATGAGGACATAGTCAACTCCAACCTCAGCCAGTGCCATTCCTATG
GTGCCTGTGGTCACCACCATCAA

ACGCGTACGCGGCGCTCGAGCAGAACTCATCTCAGAAGAGGATCTGGCAGCAATGATATCCTGGATT
ACAAGGATGACGACGATAAGGTTTAA



[View online »](#)

Protein Sequence: >RC209265 protein sequence
 Red=Cloning site Green=Tags(s)

MGRVFLTGEKANSILKRYPRANGFFEEIRQGNIERECKEEFCTFEEAREAFENNEKTKEFWSTYTKAQQG
 ESNRGSDFWFQFYLTFFPLIFGLFIILLVIFLIWRCFLRNKTRRQTVTEGHIPFPQHLNIITPPPPDEVFD
 SSGLSPGFLLGYVGRSDSVSTRLSNCDPPPTYEEATGQVNLQRSETEPHLDPPPEYEDIVNSNSASAIPM
 VPVVTTIK

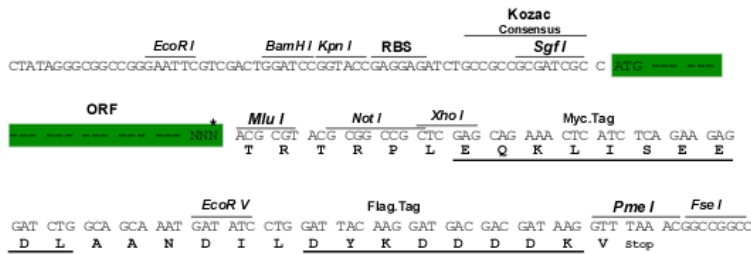
TRTRPLEQKLISEEDLAANDILDYKDDDDKV

Chromatograms: https://cdn.origene.com/chromatograms/mk6529_b09.zip

Restriction Sites: SgfI-MluI

Cloning Scheme:

Cloning sites used for ORF Shuttling:



* The last codon before the Stop codon of the ORF

ACCN: NM_000950

ORF Size: 654 bp

OTI Disclaimer: The molecular sequence of this clone aligns with the gene accession number as a point of reference only. However, individual transcript sequences of the same gene can differ through naturally occurring variations (e.g. polymorphisms), each with its own valid existence. This clone is substantially in agreement with the reference, but a complete review of all prevailing variants is recommended prior to use. [More info](#)

OTI Annotation: This clone was engineered to express the complete ORF with an expression tag. Expression varies depending on the nature of the gene.

Components: The ORF clone is ion-exchange column purified and shipped in a 2D barcoded Matrix tube containing 10ug of transfection-ready, dried plasmid DNA (reconstitute with 100 ul of water).

Reconstitution Method:

1. Centrifuge at 5,000xg for 5min.
2. Carefully open the tube and add 100ul of sterile water to dissolve the DNA.
3. Close the tube and incubate for 10 minutes at room temperature.
4. Briefly vortex the tube and then do a quick spin (less than 5000xg) to concentrate the liquid at the bottom.
5. Store the suspended plasmid at -20°C. The DNA is stable for at least one year from date of shipping when stored at -20°C.

RefSeq: [NM_000950.3](#)

RefSeq Size: 4599 bp

RefSeq ORF: 657 bp

Locus ID: 5638

UniProt ID: [O14668](#)

Cytogenetics: Xp21.1

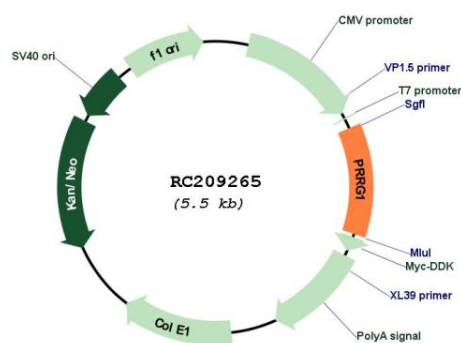
Domains: GLA

Protein Families: Transmembrane

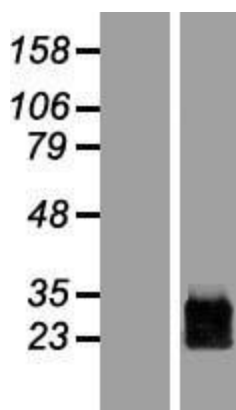
MW: 24.9 kDa

Gene Summary: This gene encodes a vitamin K-dependent, gamma-carboxylglutamic acid (Gla)-containing, single-pass transmembrane protein. This protein contains a Gla domain at the N-terminus, preceded by a propeptide sequence required for post-translational gamma-carboxylation of specific glutamic acid residues by a vitamin K-dependent gamma-carboxylase. The C-terminus is proline-rich containing PPXY and PXXP motifs found in a variety of signaling and cytoskeletal proteins. This gene is highly expressed in the spinal cord. Several alternatively spliced transcript variants have been found for this gene. [provided by RefSeq, Mar 2010]

Product images:



Circular map for RC209265



Western blot validation of overexpression lysate (Cat# [LY428065]) using anti-DDK antibody (Cat# [TA50011-100]). Left: Cell lysates from untransfected HEK293T cells; Right: Cell lysates from HEK293T cells transfected with [RC226935] using transfection reagent MegaTran 2.0 (Cat# [TT210002]).