

Product datasheet for RC209264L1

epithelial Sodium Channel gamma (SCNN1G) (NM_001039) Human Tagged Lenti ORF Clone

Product data:

Product Type:	Expression Plasmids
Product Name:	epithelial Sodium Channel gamma (SCNN1G) (NM_001039) Human Tagged Lenti ORF Clone
Tag:	Myc-DDK
Symbol:	epithelial Sodium Channel gamma
Synonyms:	BESC3; ENaCg; ENaCgamma; LDLS2; PHA1; SCNEG
Mammalian Cell Selection:	None
Vector:	pLenti-C-Myc-DDK (PS100064)
E. coli Selection:	Chloramphenicol (34 ug/mL)
ORF Nucleotide Sequence:	The ORF insert of this clone is exactly the same as(RC209264).
Restriction Sites:	SgfI-MluI
Cloning Scheme:	

Cloning sites used for ORF Shuttling:



* The last codon before the Stop codon of the ORF.

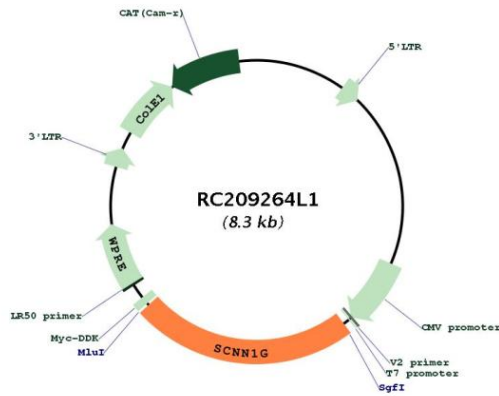
ACCN:	NM_001039
ORF Size:	1947 bp



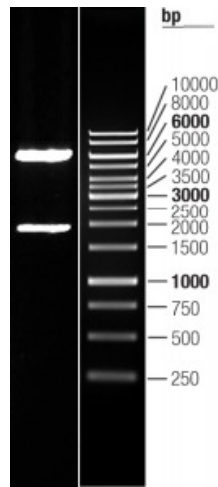
[View online >](#)

OTI Disclaimer:	The molecular sequence of this clone aligns with the gene accession number as a point of reference only. However, individual transcript sequences of the same gene can differ through naturally occurring variations (e.g. polymorphisms), each with its own valid existence. This clone is substantially in agreement with the reference, but a complete review of all prevailing variants is recommended prior to use. More info
OTI Annotation:	This clone was engineered to express the complete ORF with an expression tag. Expression varies depending on the nature of the gene.
Components:	The ORF clone is ion-exchange column purified and shipped in a 2D barcoded Matrix tube containing 10ug of transfection-ready, dried plasmid DNA (reconstitute with 100 ul of water).
Reconstitution Method:	<ol style="list-style-type: none"> 1. Centrifuge at 5,000xg for 5min. 2. Carefully open the tube and add 100ul of sterile water to dissolve the DNA. 3. Close the tube and incubate for 10 minutes at room temperature. 4. Briefly vortex the tube and then do a quick spin (less than 5000xg) to concentrate the liquid at the bottom. 5. Store the suspended plasmid at -20°C. The DNA is stable for at least one year from date of shipping when stored at -20°C.
RefSeq:	NM_001039.2
RefSeq Size:	3516 bp
RefSeq ORF:	1950 bp
Locus ID:	6340
UniProt ID:	P51170
Cytogenetics:	16p12.2
Domains:	ASC
Protein Families:	Druggable Genome, Ion Channels: Other, Transmembrane
Protein Pathways:	Taste transduction
MW:	74.1 kDa
Gene Summary:	Nonvoltage-gated, amiloride-sensitive, sodium channels control fluid and electrolyte transport across epithelia in many organs. These channels are heteromeric complexes consisting of 3 subunits: alpha, beta, and gamma. This gene encodes the gamma subunit, and mutations in this gene have been associated with Liddle syndrome. [provided by RefSeq, Apr 2009]

Product images:



Circular map for RC209264L1



Double digestion of RC209264L1 using SgfI and MluI