

Product datasheet for **RC209261**

SLC26A2 (NM_000112) Human Tagged ORF Clone

Product data:

Product Type:	Expression Plasmids
Product Name:	SLC26A2 (NM_000112) Human Tagged ORF Clone
Tag:	Myc-DDK
Symbol:	SLC26A2
Synonyms:	D5S1708; DTD; DTDST; EDM4; MST153; MSTP157
Mammalian Cell Selection:	Neomycin
Vector:	pCMV6-Entry (PS100001)
E. coli Selection:	Kanamycin (25 ug/mL)



[View online »](#)

ORF Nucleotide
Sequence:

>RC209261 ORF sequence
 Red=Cloning site Blue=ORF Green=Tags(s)

TTTTGTAATACGACTCACTATAGGGCGGCCGGAATTCGTCGACTGGATCCGGTACCGAGGAGATCTGCC
 GCC**GCGATCGCC**

ATGTCTTCAGAAAGTAAAGAGCAACATAACGTTTCACCCAGAGACTCAGCTGAAGGAAATGACAGTTATC
 CATCTGGGATCCATCTGGAACCTCAAAGGGAATCAAGTACTGACTTCAAGCAATTTGAGACCAATGATCA
 ATGCAGACCTTATCATAGGATCCTTATTGAGCGTCAAGAGAAATCAGATACAAACTTCAAGGAGTTTGT
 ATTA AAAAGCTGCAGAAGAATTGCCAGTGCAGTCCAGCCAAAGCCAAAAATATGATTTTAGGTTTCTTTC
 CTGTTTTGCAGTGGCTCCAAAAACGACCTAAAGAAAAACATTTTAGGGGATGTGATGTCAGGCTTGAT
 TGTGGGCATATTATTGGTGCCCGAGTCCATTGCTTATCCCTGCTGGCTGGCCAAGAACCTGTCTATGGT
 CTGTACACATCTTTTTTGGCAGCATCATTTATTTCTCTTGGGTACCTCCCGTCACATCTCTGTGGCA
 TTTTTGGAGTACTGTGCCTTATGATTGGTGAGACAGTTGACCGAGAAGCTACAGAAAGCTGGCTATGACAA
 TGCCCATAGTGCCTTCTTAGGAATGGTTTCAAATGGGAGCACATTATTAATCATACATCAGACAGG
 ATATGTGACAAAAGTTGCTATGCAATTATGGTTGGCAGCACTGTAACTTTATAGCTGGAGTTTATCAGG
 TAGCGATGGGCTTCTTCAAGTGGGTTTTGTTTCTGTCTACCTCTCAGATGCCTTGTGAGTGGATTTGT
 CACTGGTGCTCCTTCACTATTCTTACATCTCAGGCCAAGTATCTTCTGGGCTCAACCTTCTCGGACT
 AATGGTGTGGGCTCACTCATCACTACCTGGATACATGTCTTCAGAAACATCCATAAGACCAATCTCTGTG
 ATCTTATCACCAGCCTTTTGTGCCTTTTGGTCTTTTGGCAACCAAGAAGTCAATGAACACTTCAAATC
 CAAGCTTAAGGCACCGATTCTATTGAACCTTGTGTTGTTGTAGCAGCCACATTAGCCTCTATTTTGGAA
 AAACATGATGAAAATTATAAATCTAGTATTGCTGGACATATCCCACTGGGTTTATGCCACCCAAAGTAC
 CAGAATGGAACCTAATTCCTAGTGTGGCTGTAGATGCAATAGCTATTTCCATCATTGGTTTTGCTATCAC
 TGTATCACTTTCTGAGATGTTTGGCAAGAAACATGGTTACACAGTCAAAGCAAACCAAGGAAATGTATGCC
 ATTGGCTTTTGTAAATATCATCCCTTCTTCTTCCACTGTTTTACTACTAGTGCAGCTCTTGCAAAGACAT
 TGGTTAAAGAATCAACAGGCTGCCATACTCAGCTTTCTGGTGTGGTAACAGCCCTGGTCTTTTGTGGT
 CCTCTAGTAATAGCTCCTTTGTTCTATCCCTTCAAAAAGTGTCTTGGTGTGATCACAATTGTAAT
 CTACGGGGAGCCCTTCGTAATTTAGGGATCTTCCAAAATGTGGAGTATTAGTAGAATGGATACAGTTA
 TCTGGTTTGTACTATGCTGTCTCTGCACTGCTAAGTACTGAAATAGGCCTACTTGTGGGGTTTGT
 TTCTATATTTGTGTCATCCTCCGCACTCAGAAGCCAAAGAGTTCAGTCTTGGCTTGGTGAAGAGTCT
 GAGGTCTTTGAATCTGTGTCTGCTTACAAGAACCTTCAAGTAAAGCCAGGCATCAAGATTTCCGCTTTG
 TAGCCCTCTCTACTACATAAACAAAGAATGCTTTAAATCTGCTTTATACAAACAACTGTCAACCCAAT
 CTTAATAAAGGTGGCTTGAAGAAGGCAGCAAAGAGAAAGATCAAAGAAAAAGTGTGACTCTTGGTGGAA
 ATCCAGGATGAAATGTCAGTGAACCTTTCCCATGATCCCTTGGAGCTGCATACTATAGTATTGACTGCA
 GTGCAATTCATTTTTAGATACAGCAGGGATCCACACACTGAAAGAAGTTCGCAGAGATTATGAAGCCAT
 TGGAAATCCAGGTTCTGCTGGCTCAGTGCATCCCACTGTGAGGGATTCCCTAACCAACGGAGAATATTGC
 AAAAAGGAAGAAGAAAACCTTCTCTTCTATAGTGTGTATGAAGCGATGGCTTTTGCAGAAGTATCTAAAA
 ATCAGAAAGGAGTATGTGTTCCCAATGGTCTGAGTCTTAGTAGTGAT

AGCGGACCGACGCGTACGCGGCCGCTCGAGCAGAACTCATCTCAGAAGAGGATCTGGCAGCAAATGATATCC
 TGGATTACAAGGATGACGACGATAAGGTTTAA

Protein Sequence: >RC209261 protein sequence
 Red=Cloning site Green=Tags(s)

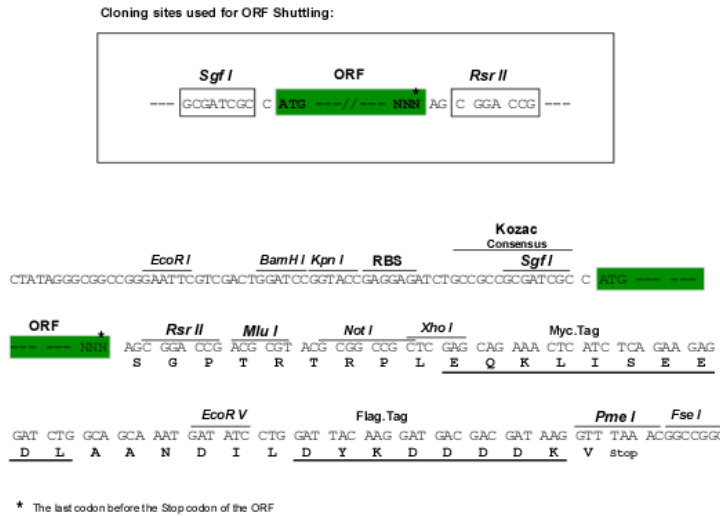
MSESEKEQHNVSPRDSAEGNDSYPSGIHLELQRESSTDFKQFETNDQCRPYHRILIERQEKSDTNFKEFV
 IKKLQKNCQCSPAKAKNMILGFLPVLQWLPKYDLKKNILGDVMSGLIVGILLVPQSIAYSLLAGQEPVYG
 LYTSFFASIIYFLLGTSRHISVGIFGVLCMIGETVDRELQKAGYDNAHSAPSLGMVSNSTLLNHTSDR
 ICDKSCYAIMVGSTVTFIAGVYQVAMGFFQVGFVSVYLSALLSGFVTGASFTILT SQAKYLLGLNLPR
 NGVGLSITTWIHFVFRNIHKTNLCDLITSLCLLVLLPTKELNEHFKSKLKAPIELVVVVAATLASHFG
 KLHENYSSSIAGHIPTGFMPKVPENLIPSVAVDAIAISIIIGFAITVSLSEMF AKKHGYTVKANQEMYA
 IGFCNIIPSFFHCFTTSAALAKTLVKESTGCHTQLSGVVTALVLLVLLVIAPLFYSLQKSVLGVITIVN
 LRGALRFRDLPKMWSISRMDTVIWFVTLSSALLSTEIGLLVGVCFSIFCVILRTQKPKSSLLGLVEES
 EVFESVSAYKNLQTKPGIKIFRFVAPLYINKECFKSALYKQTVNPILIKVAVKKAARKRIKEKVTLGG
 IQDEMVSQLSHDPLELHTIVIDCSAIQFLDTAGIHTLKEVRRDYE AIGIQVLLAQCNPVTRDSLNGEYC
 KKEEENLLFYSVYEAMAF AEVSKNQKGVCPNGLSLSSD

SGPTRTRPLEQKLISEEDLAANDILDYKDDDDKV

Chromatograms: https://cdn.origene.com/chromatograms/mk6185_c09.zip

Restriction Sites: SgfI-RsrII

Cloning Scheme:



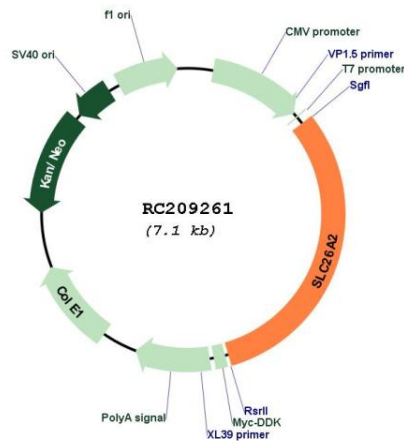
ACCN: NM_000112

ORF Size: 2217 bp

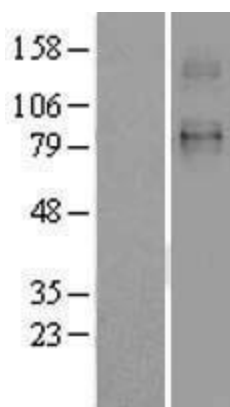
OTI Disclaimer: The molecular sequence of this clone aligns with the gene accession number as a point of reference only. However, individual transcript sequences of the same gene can differ through naturally occurring variations (e.g. polymorphisms), each with its own valid existence. This clone is substantially in agreement with the reference, but a complete review of all prevailing variants is recommended prior to use. [More info](#)

OTI Annotation: This clone was engineered to express the complete ORF with an expression tag. Expression varies depending on the nature of the gene.

Components:	The ORF clone is ion-exchange column purified and shipped in a 2D barcoded Matrix tube containing 10ug of transfection-ready, dried plasmid DNA (reconstitute with 100 ul of water).
Reconstitution Method:	<ol style="list-style-type: none"> 1. Centrifuge at 5,000xg for 5min. 2. Carefully open the tube and add 100ul of sterile water to dissolve the DNA. 3. Close the tube and incubate for 10 minutes at room temperature. 4. Briefly vortex the tube and then do a quick spin (less than 5000xg) to concentrate the liquid at the bottom. 5. Store the suspended plasmid at -20°C. The DNA is stable for at least one year from date of shipping when stored at -20°C.
RefSeq:	<u>NM_000112.2, NP_000103.1</u>
RefSeq Size:	8082 bp
RefSeq ORF:	2220 bp
Locus ID:	1836
UniProt ID:	<u>P50443</u>
Cytogenetics:	5q32
Domains:	Sulfate_transp, STAS
Protein Families:	Druggable Genome, Transmembrane
MW:	81.6 kDa
Gene Summary:	The diastrophic dysplasia sulfate transporter is a transmembrane glycoprotein implicated in the pathogenesis of several human chondrodysplasias. It apparently is critical in cartilage for sulfation of proteoglycans and matrix organization. [provided by RefSeq, Jul 2008]

Product images:


Circular map for RC209261



Western blot validation of overexpression lysate (Cat# [LY400034]) using anti-DDK antibody (Cat# [TA50011-100]). Left: Cell lysates from untransfected HEK293T cells; Right: Cell lysates from HEK293T cells transfected with RC209261 using transfection reagent MegaTran 2.0 (Cat# [TT210002]).