

Product datasheet for **RC209253**

EDG3 (S1PR3) (NM_005226) Human Tagged ORF Clone

Product data:

Product Type:	Expression Plasmids
Product Name:	EDG3 (S1PR3) (NM_005226) Human Tagged ORF Clone
Tag:	Myc-DDK
Symbol:	EDG3
Synonyms:	EDG-3; EDG3; LPB3; S1P3
Mammalian Cell Selection:	Neomycin
Vector:	pCMV6-Entry (PS100001)
E. coli Selection:	Kanamycin (25 ug/mL)
ORF Nucleotide Sequence:	>RC209253 representing NM_005226 Red=Cloning site Blue=ORF Green=Tags(s)

TTTTGTAATACGACTCACTATAGGGCGGCCGGAATTCGTCGACTGGATCCGGTACCGAGGAGATCTGCC
GCC**CGATCGCC**

ATGGCAACTGCCCTCCCGCCGCTCTCCAGCCGGTGGGGGGAACGAGACCCTGCCGGAGCATTACCAGT
ACGTGGGGAAGTTGGCGGCAGGCTGAAGGAGGCTCCGAGGGCAGCACGCTCACCACCGTCTTCTT
GGTCATCTGCAGCTTCATCGTCTGGAGAACCTGATGGTTTTGATTGCCATCTGGAAAAACAATAAATTT
CACAACCGCATGTACTTTTTTTCATTGGCAACCTGGCTCTCTGCGACCTGCTGGCCGGCATCGCTTACAAGG
TCAACATTCTGATGTCTGGCAAGAAGACGTTTCAGCCTGTCTCCACGGTCTGGTTCTCAGGGAGGGCAG
TATGTTTCGTGGCCCTTGGGGCGTCCACCTGCAGCTTACTGGCCATCGCCATCGAGCGGCACTTGACAATG
ATCAAAATGAGGCCTTACGACGCCAACAAGAGGCCACCGCTCTTCTCCTGATCGGGATGTGCTGGCTCA
TTGCCCTCACGCTGGGCGCCCTGCCATTCTGGGCTGGAAGTGCCTGCACAATCTCCCTGACTGCTCTAC
CATCCTGCCCTTACTCCAAGAAGTACATTGCCTTCTGCATCAGCATCTTACGGCCATCCTGGTGACC
ATCGTGATCCTTACGCACGCATCTACTTCTGGTGAAGTCCAGCAGCCGTAAGGTGGCCAAACCACAACA
ACTCGGAGCGGTCCATGGCACTGCTGCGGACCGTGGTATTGTGGTGAGCGTGTTTCATCGCTGCTGGTC
CCCCTCTTTCATCCTCTTCTCATTGATGTGGCCTGCAGGGTGCAGGCGTGCCCCATCCTCTTCAAGGCT
CAGTGGTTCATCGTGTGGCTGTCTCAACTCCGCCATGAACCGGTTCATCTACAGCTGGCCAGCAAGG
AGATGCGGCGGGCTTCTCCGTCTGGTCTGCAACTGCCTGGTTCAGGGGACGGGGGCCCGCCCTCACC
CATCCAGCCTGCGCTCGACCCAAGCAGAAGTAAATCAAGCAGCAGCAACAATAGCAGCCACTCTCCGAAG
GTCAAGGAAGACCTGCCACACAGCCCTCATCCTGCATCATGGACAAGAACGCAGCACTTCAGAATG
GGATCTTCTGCAAC

ACGCGTACGCGGCCGCTCGAGCAGAAACTCATCTCAGAAGAGGATCTGGCAGCAATGATATCCTGGATT
ACAAGGATGACGACGATAAGGTTTAA



[View online »](#)

Protein Sequence: >RC209253 representing NM_005226
Red=Cloning site Green=Tags(s)

MATALPPRLQPVRGNETLREHYQYVGKLAGRLKEASEGSTLTTVLFLVICSFIVLENLMVLI AIWKNNKF
 HNRMYFFIGNLALCDLLAGIAYKVNILMSGKTFSLSPTVWFLREGSMFVALGASTCSLLAIAIERHLM
 IKMRPYDANKRHRVFL IGM CWL I AFTL GALPILGWNC LHNLPDCSTILPLYSKYIAFCISIFTAILVT
 IVILYARIYFLVKSSSRK VANHNNSERSMALLR TVVIVVSVFIACWSPLF ILFLIDVACRVQACPILFKA
 QWFIVLAVLNSAMNPVIYTLASKEMRRAFFRLVCNCLVRGRGARASPIQPALDPSRSKSSSSNSSHSPK
 VKEDLPHTAPSSCIMDKNAALQNGIFCN

TRTRPLEQKLISEEDLAANDILDYKDDDDKV

Chromatograms: https://cdn.origene.com/chromatograms/mg2453_a01.zip

Restriction Sites: SgfI-MluI

Cloning Scheme:



* The last codon before the Stop codon of the ORF

ACCN: NM_005226

ORF Size: 1134 bp

OTI Disclaimer: The molecular sequence of this clone aligns with the gene accession number as a point of reference only. However, individual transcript sequences of the same gene can differ through naturally occurring variations (e.g. polymorphisms), each with its own valid existence. This clone is substantially in agreement with the reference, but a complete review of all prevailing variants is recommended prior to use. [More info](#)

OTI Annotation: This clone was engineered to express the complete ORF with an expression tag. Expression varies depending on the nature of the gene.

Components: The ORF clone is ion-exchange column purified and shipped in a 2D barcoded Matrix tube containing 10ug of transfection-ready, dried plasmid DNA (reconstitute with 100 ul of water).

Reconstitution Method:

1. Centrifuge at 5,000xg for 5min.
2. Carefully open the tube and add 100ul of sterile water to dissolve the DNA.
3. Close the tube and incubate for 10 minutes at room temperature.
4. Briefly vortex the tube and then do a quick spin (less than 5000xg) to concentrate the liquid at the bottom.
5. Store the suspended plasmid at -20°C. The DNA is stable for at least one year from date of shipping when stored at -20°C.

RefSeq: [NM_005226.4](#)

RefSeq Size: 4221 bp

RefSeq ORF: 1137 bp

Locus ID: 1903

UniProt ID: [Q99500](#)

Cytogenetics: 9q22.1

Domains: 7tm_1

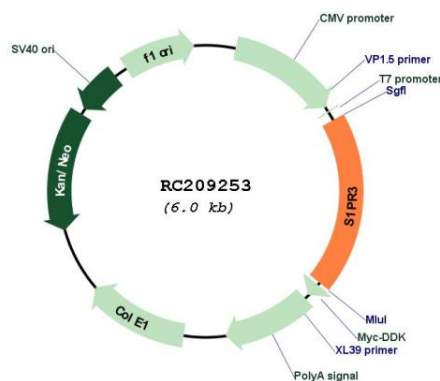
Protein Families: Druggable Genome, GPCR, Transmembrane

Protein Pathways: Neuroactive ligand-receptor interaction

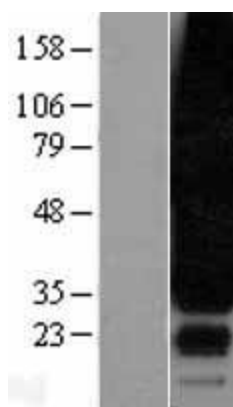
MW: 42.1 kDa

Gene Summary: This gene encodes a member of the EDG family of receptors, which are G protein-coupled receptors. This protein has been identified as a functional receptor for sphingosine 1-phosphate and likely contributes to the regulation of angiogenesis and vascular endothelial cell function. [provided by RefSeq, Jul 2008]

Product images:



Circular map for RC209253



Western blot validation of overexpression lysate (Cat# [LY401600]) using anti-DDK antibody (Cat# [TA50011-100]). Left: Cell lysates from untransfected HEK293T cells; Right: Cell lysates from HEK293T cells transfected with RC209253 using transfection reagent MegaTran 2.0 (Cat# [TT210002]).