

Product datasheet for **RC209248**

LIPG (NM_006033) Human Tagged ORF Clone

Product data:

Product Type:	Expression Plasmids
Product Name:	LIPG (NM_006033) Human Tagged ORF Clone
Tag:	Myc-DDK
Symbol:	LIPG
Synonyms:	EDL; EL; PRO719
Mammalian Cell Selection:	Neomycin
Vector:	pCMV6-Entry (PS100001)
E. coli Selection:	Kanamycin (25 ug/mL)



[View online »](#)

ORF Nucleotide Sequence:

>RC209248 representing NM_006033.
 Blue=ORF Red=Cloning site Green=Tag(s)

```
GCTCGTTTAGTGAACCGTCAGAATTTTGTAAACGACTCACTATAGGGCGGCCGGGAATTCGTGACTG
GATCCGGTACCGAGGAGATCTGCCGCCCGCATCGCC
ATGAGCAACTCCGTTCTCTGCTCTGTTTCTGGAGCCTCTGCTATTGCTTTGCTGCGGGGAGCCCGTA
CCTTTTGGTCCAGAGGGACGGCTGGAAGATAAGCTCCACAAACCCAAAGCTACACAGACTGAGGTCAA
CCATCTGTGAGGTTAACCTCCGCACCTCCAAGGACCCAGAGCATGAAGGATGCTACCTCTCCGTGCGC
CACAGCCAGCCCTTAGAAGACTGCGATTTCAACATGACAGCTAAAACCTTTTTCATCATTACGGATGG
ACGATGAGCGGTATCTTTGAAAACCTGGCTGCACAACTCGTGTACAGCCCTGCACACAAGAGAGAAAGAC
GCCAATGTAGTTGTGGTTGACTGGCTCCCCCTGGCCACCAGCTTACACGGATGCGGTCAATAATACC
AGGGTGGTGGGACACAGCATTGCCAGGATGCTCGACTGGCTGCAGGAGAAGGACGATTTTCTCTCGGG
AATGTCCACTTGATCGGCTACAGCCTCGGAGCGCAGTGGCCGGGTATGCAGGCAACTTCGTGAAAGGA
ACGGTGGGCCGAATCACAGGTTTGGATCCTGCCGGGCCATGTTGAAGGGGCCACATCCACAAGAGG
CTCTCTCCGACGATGCAGATTTTGTGGATGCTCCTCCACACCTACACGCTTCTTCGGCTTGAGCATT
GGTATTAGATGCCTGTGGGCCACATTGACATCTACCCCAATGGGGGTGACTTCCAGCCAGGCTGTGGA
CTCAACGATGTCTTGGGATCAATTGCATATGGAACAATCACAGAGGTGGTAAAATGTGAGCATGAGCGA
GCCGTCCACCTCTTTGTTGACTCTCTGGTGAATCAGGACAAGCCGAGTTTGCCTTCCAGTGCACTGAC
TCCAATCGCTTCAAAAAGGGGATCTGTCTGAGCTGCCGAAGAACCGTTGTAATAGCATTGGCTACAAT
GCCAAGAAAATGAGGAACAAGAGGAACAGCAAAATGTACCTAAAACCCGGGCAGGCATGCCTTTCAGA
GTTTACCATTATCAGATGAAAATCCATGTCTTCAGTTACAAGAACATGGGAGAAATTGAGCCACCTTT
TACGTACCCTTTATGGCACTAATGCAGATCCCAGACTCTGCCACTGGAATAGTGGAGCGGATCGAG
CAGAATGCCACCAACACCTTCTGGTCTACACCGAGGAGGACTTGGGAGACCTCTTGAAGATCCAGCTC
ACCTGGGAGGGGGCCTCTCAGTCTTGGTACAACCTGTGGAAGGAGTTTCGCAGCTACCTGTCTCAACCC
CGCAACCCCGGACGGGAGCTGAATATCAGGCGCATCCGGGTGAAGTCTGGGAAACCCAGCGGAAACTG
ACATTTTGTACAGAAGACCCTGAGAACACCAGCATATCCCAGGCCAGGAGCTCTGGTTTCGCAAGTGT
CGGGATGGCTGGAGGATGAAAAACGAAACCAGTCCCCTGTGGAGCTTCCC
AGCGGACCGACGCGTACGCGGCCGCTCGAGCAGAAACTCATCTCAGAAAGAGGATCTGGCAGCAAATGAT
ATCCTGGATTACAAGGATGACGACGATAAGGTTTAA
```

Protein Sequence:

>Peptide sequence encoded by RC209248
 Blue=ORF Red=Cloning site Green=Tag(s)

```
MSNSVPLLCFWSLCYCF AAGSPVPFGPEGRLLEDK LHKPKATQTEVKPSVRFNLRTSKDPEHEGCVLSVG
HSQPLEDCSFNMTAKTFFIIHGWTMSGIFENWLHKLVSALHTREKDANVVVDWLPLAHQLYTDVNNT
RVVGHSIARMLDWLQEKDDFSLGNVHLIGYSLGAHVAGYAGNFVKGTVGRITGLDPAGPMFEGADIHKR
LSPDDADFVDVLHTYTRSFGLSIGIQMPVGHIDIYPNGGDFQPGCGLNDVLSIAYGTITEVVKCEHER
AVHLFVDSL VNQDKPSFAFQCTDSNRFKKIGICLSKRNRNSIGYNNAKMRNRKNSKMYLKTRAGMPFR
VYHYQMKIHFVSYKNMGEIEPTFYVTL YGTNADSQTLPLEIVERIEQ NATNTFLVYTEEDLGDLLKIQL
TWE GASQSWYNLWKEFRSYLSQPRNPGRELNIRIRVKSGETQRKLTFC TEDPENTSISPQELWFRKC
RDGWRMKNETSPTVELP
SGPTRTRPLEQKLISEEDLAANDILDYKDDDDKV
```

Recombinant protein using RC209248 also available, [TP309248](#)

Chromatograms:

https://cdn.origene.com/chromatograms/mg2686_d05.zip

Restriction Sites:

Sgfl-RsrII

Cloning Scheme:


ACCN: NM_006033

ORF Size: 1500 bp

OTI Disclaimer: The molecular sequence of this clone aligns with the gene accession number as a point of reference only. However, individual transcript sequences of the same gene can differ through naturally occurring variations (e.g. polymorphisms), each with its own valid existence. This clone is substantially in agreement with the reference, but a complete review of all prevailing variants is recommended prior to use. [More info](#)

OTI Annotation: This clone was engineered to express the complete ORF with an expression tag. Expression varies depending on the nature of the gene.

Components: The ORF clone is ion-exchange column purified and shipped in a 2D barcoded Matrix tube containing 10ug of transfection-ready, dried plasmid DNA (reconstitute with 100 ul of water).

- Reconstitution Method:**
1. Centrifuge at 5,000xg for 5min.
 2. Carefully open the tube and add 100ul of sterile water to dissolve the DNA.
 3. Close the tube and incubate for 10 minutes at room temperature.
 4. Briefly vortex the tube and then do a quick spin (less than 5000xg) to concentrate the liquid at the bottom.
 5. Store the suspended plasmid at -20°C. The DNA is stable for at least one year from date of shipping when stored at -20°C.

Note: Plasmids are not sterile. For experiments where strict sterility is required, filtration with 0.22um filter is required.

RefSeq Size: 4143 bp

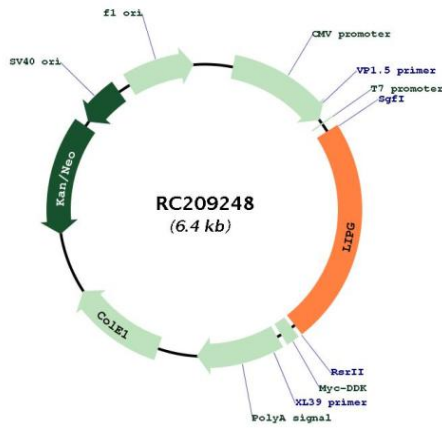
RefSeq ORF: 1503 bp

Locus ID: 9388

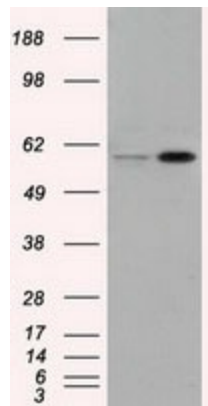
UniProt ID: [Q9Y5X9](#)

Cytogenetics: 18q21.1
Domains: lipase, PLAT
Protein Families: Druggable Genome, Secreted Protein
Protein Pathways: Glycerolipid metabolism, Metabolic pathways
MW: 56.8 kDa
Gene Summary: The protein encoded by this gene has substantial phospholipase activity and may be involved in lipoprotein metabolism and vascular biology. This protein is designated a member of the TG lipase family by its sequence and characteristic lid region which provides substrate specificity for enzymes of the TG lipase family. [provided by RefSeq, Jul 2008]

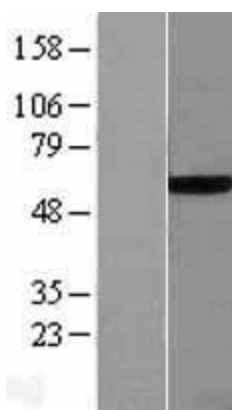
Product images:



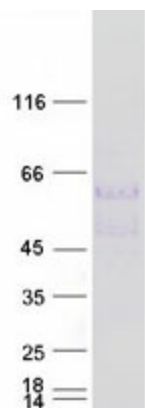
Circular map for RC209248



HEK293T cells were transfected with the pCMV6-ENTRY control (Cat# [PS100001], Left lane) or pCMV6-ENTRY LIPG (Cat# RC209248, Right lane) cDNA for 48 hrs and lysed. Equivalent amounts of cell lysates (5 ug per lane) were separated by SDS-PAGE and immunoblotted with anti-LIPG (Cat# [TA501047]). Positive lysates [LY401821] (100ug) and [LC401821] (20ug) can be purchased separately from OriGene.



Western blot validation of overexpression lysate (Cat# [LY401821]) using anti-DDK antibody (Cat# [TA50011-100]). Left: Cell lysates from untransfected HEK293T cells; Right: Cell lysates from HEK293T cells transfected with RC209248 using transfection reagent MegaTran 2.0 (Cat# [TT210002]).



Coomassie blue staining of purified LIPG protein (Cat# [TP309248]). The protein was produced from HEK293T cells transfected with LIPG cDNA clone (Cat# RC209248) using MegaTran 2.0 (Cat# [TT210002]).