

Product datasheet for RC209244

GLG1 (NM_012201) Human Tagged ORF Clone

Product data:

Product Type: Expression Plasmids
Product Name: GLG1 (NM_012201) Human Tagged ORF Clone
Tag: Myc-DDK
Symbol: GLG1
Synonyms: CFR-1; ESL-1; MG-160; MG160
Vector: pCMV6-Entry (PS100001)
E. coli Selection: Kanamycin (25 ug/mL)
Cell Selection: Neomycin
ORF Nucleotide Sequence: >RC209244 representing NM_012201
 Red=Cloning site Blue=ORF Green=Tags(s)

CTATAGGGCGCCGGGAATTCGTCGACTGGATCCGGTACCGAGGAGATCTGCCGCCGCGATCGCCGGCGC
 GCCC

ATGGCGGCGTGTGGACGTGTACGGAGGATGTTCCGCTTGTGGCGGCGCTGCATCTGCTGCTATTTCG
 CGGCCGGGGCCGAGAACTCCCCGGCCAGGGCGTCCACAGCCAGGGCCAGGGTCCCGGGGCAACTTTGT
 GTCCCTTCGTAGGGCAGGCCGGAGGCGGGCCCGCGGGTCCAGCAGCTGCCCCAGCTGCCTCAGTCATCG
 CAGCTTACAGCAGCAACAGCAGCAGCAGCAACAGCAACAGCAGCCTCAGCCGCCGAGCCGCTTCCCGG
 CGGGTGGGCTCCGGCCCGGGGAGGAGCGGGGCTGGTGGGGCTGGAAGCTGGCGGAGGAAGATC
 CTGCAGGGAGGACGTGACCCGCGTGTGCCCTAAGCACACCTGGAGCAACAACCTGGCGGTGCTCGAGTGC
 CTGCAGGATGTGAGGGAGCCTGAAAAATGAAATTTCTTCAGACTGCAATCATTTTGTGGAATTATAAGC
 TGAACCTAACTACAGATCCCAAATTTGAATCTGTGGCCAGAGAGGTTTGCAAATCTACTATAACAGAGAT
 TAAAGAATGTGCTGATGAACCGGTTGAAAAAGGTTACATGGTTTCTGCTGGTGGATCACCGAGGCAAC
 ATCACTGAGTATCAGTGTACCAGTACATTACCAAGATGACGGCCATCATTTTGTAGTATTACCGTTTAA
 TCTGTGGCTTCATGGATGACTGCAAAAATGACATCAACATTCTGAAATGTGGCAGTATTCGGCTTGGAA
 AAAGGATGCACATTCACAAGGTGAGGTGGTATCATGCTTGGAGAAAGCCCTGGTGAAGAAGCAGAAGAA
 AGAGAACCAAGATTCAAGTTTCTGAACTCTGCAAGAAAGCCATTCTCCGGTGGCTGAGCTGTCATCGG
 ATGACTTTCACCTAGACCGCATTTATATTTGCTTGGCAGATGATCGGGAGCGTTTTTGTGAAAAATC
 ACAAGCTGGTGGGGCAGAGTGTATAAGTGCCTTTTAAACATAAATTTGAAGAATCCATGAGTGAAGAG
 TGTGAGAAAGCACTTACAACCCGCCAAAAGCTGATTGCCAGGATTATAAAGTCAGTTATTCATTGGCCA
 AATCCTGTAAAAGTGACTTGAAGAAATACCGGTGCAATGTGAAAACCTCCGCGATCGCGTGAAGCCAG
 GCTCTCCTACTTGTTAATGTGCCTGGAGTCAGCTGTACACAGAGGGCGACAAGTCAGCAGTGAAGTCCAG
 GGGGAGATGCTGGATTACCGACGCATGTTGATGGAAGACTTTTCTGAGCCCTGAGATCATCCTAAGCT
 GTCGGGGGGAGATTGAACACCATTGTTCCGGATTACATCGAAAAGGGCGGACCCTACACTGTCTGATGAA
 AGTAGTTCGAGGGGAGAAGGGGAACCTTGAATGAACTGCCAGCAGGCGCTTCAAACACTGATTCAGGAG
 ACTGACCTGGTGCAGATTACCGCATTGATCGAGCTTTGAATGAAGCTTGTGAATCTGTAATCCAGACAG



[View online >](#)

CCTGCAAACATATAAGATCTGGAGACCCAATGATCTTGTCTGTCGCTGATGGAACATTTATACACAGAGAA
GATGGTAGAAGACTGTGAACACCGTCTCTTAGAGCTGCAGTATTTTCATCTCCCGGGATTGGAAGCTGGAC
CCTGTCCTGTACCGCAAGTGCCAGGGAGACGCTTCTCGTCTTTGCCACACCCACGGTTGGAATGAGACCA
GTGAATTTATGCCTCAGGGAGCTGTGTTCTTTGTTTATACAGACACGCCACCGCACTGAGGAACAGGG
AAGGAGGCTCTCACGGGAGTGCCGAGCTGAAGTCCAAAGGATCCTACACCAGCGTGCCATGGATGTCAAG
CTGGATCCTGCCCTCCAGGATAAGTGCCTGATTGATCTGGGAAAATGGTGCAGTGAGAAAACAGAGACTG
GACAGGAGCTGGAGTGCCTTCAGGACCATCTGGATGACTTGGTGGTGGAGTGTAGAGATATAGTTGGCAA
CCTCACTGAGTTAGAATCAGAGGATATTCAAATAGAAGCCTTGCTGATGAGAGCCTGTGAGCCCAATAATT
CAGAACTTCTGCCACGATGTGGCAGATAACCAGATAGACTCTGGGGACCTGATGGAGTGTCTGATACAGA
ACAAAACACCAGAAGGACATGAACGAGAAGTGTGCCATCGGAGTTACCCACTTCCAGCTGGTGCAGATGAA
GGATTTTCGGTTTTCTTACAAGTTTAAAATGGCCTGCAAGGAGGACGTTGAAGCTTTGCCAAACATA
AAAAAGAAGGTGGACGTGGTGTCTGCCTGAGCAGCACCCTGCGCAATGACACTCTGCAGGAAGCCAAGG
AGCACAGGGTGTCCCTGAAGTGCCGAGGACGCTCCGTGTGGAGGAGCTGGAGATGACGGAGGACATCCG
CTTGGAGCCAGATCTATACGAAGCCTGCAAGAGTGACATCAAAAACCTTCTGTTCCGCTGTGCAATATGGC
AACGCTCAGATTATCGAATGTCTGAAAGAAAACAAGAAGCAGCTAAGCACCCGCTGCCACAAAAAGTAT
TTAAGCTCAGGAGACAGAGATGATGGACCCAGAGCTAGACTACACCCTCATGAGGGTCTGTAAAGCAGAT
GATAAAGAGGTTCTGTCCGGAAGCAGATTCTAAAACCATGTTGCAGTGCTTGAAGCAAAATAAAAACAGT
GAATTGATGGATCCCAATGCAACAGATGATAACCAAGCGCCAGATCACCCAGAACACAGATTACCGCT
TAAACCCCATGTTAAGAAAAGCCTGTAAGCTGACATTCCTAAATTCGTGACGGTATCCTGACTAAGGC
CAAGGATGATTCAGAATTAGAAGGACAAGTCACTCTTGCTGAAAGTGAAGATATGCTGACCAGCGCCTG
TCTTCAGACTGTGAAGACCAGATCCGAATCATTATCCAGGAGTCCGCCCTGGACTACCGCCTGGATCCTC
AGCTCCAGCTGCACTGCTCAGACGAGATCTCCAGTCTATGTGCTGAAGAAGCAGCAGCCCAAGAGCAGAC
AGGTGAGGTGGAGGAGTGCCTCAAGGTCAACCTGCTCAAGATCAAAAACAGAATTGTGTA AAAAAGGAAGTG
CTAAACATGCTGAAGGAAAGCAAAGCAGACATCTTTGTTGACCCGGTACTTCATACTGCTTGTGCCCTGG
ACATTAACACCACTGCGCAGCCATCACCCCTGGCCGCGGGCGTCAAATGTCCTGTCTCATGGAAGCACT
GGAGGATAAGCGGGTGAAGTTACAGCCGAGTGCAAAAAGCGCCTCAATGACCGATTGAGATGTGGAGT
TACGCAGCAAAGGTGGCCCCAGCAGATGGCTTCTCTGATCTTGCCATGCAAGTAATGACGTCTCCATCTA
AGAACTACATTCTCTGTGATCAGTGGGAGCATCTGTATATTGTTCTGATTGGCCTGATGTGTGGACG
GATCACCAAGCGAGTGACACGAGAGCTCAAGGACAGGCTACAATACAGGTCAGAGACAATGGCTTATAAA
GGTTTAGTGTGGTCTCAGGATGTGACAGGCAGTCCAGCC

ACGCGTACGCGGCCGCTCGAGCAGAAACTCATCTCAGAAGAGGATCTGGCAGCAAATGATATCCTGGATT
ACAAGGATGACGACGATAAGGTTTAA

Protein Sequence: >RC209244 representing NM_012201
 Red=Cloning site Green=Tags(s)

MAACGRVRRMFRLSAALHLLLLFAAGAELKPGQGVHSQGGPGANFVSFVQAGGGGPAGQQLPQLPQSS
 QLQQQQQQQQQPQPQPPFPAGGPPARRGGAGGGWKLAEESCREDEVTRVCPKHTWSNNLAVLEC
 LQDVREPENEISSDCNHLLWNYKLNLTDPKFEVSAREVCKSTITEIKECADEPVGKGYMVSCLVDHRGN
 ITEYQCHQYITKMTAIIIFSDYRLICGFMDDCKNDINILKCGSIRLGEKDAHSQGEVVSACLEKGLVKEAEE
 REPKIQVSELCKKAILRVAELSSDDFHLDRHLYFACRDDREFCENTQAGEGRVYKCLFNHKFEESMSEK
 CREALTTRQKLI AQDYKVSYSLAKSCKSDLKKYRCNVENLPRSREARLSYLLMCLES AVHRGRQVSSECQ
 GEMLDYRRMLMEDFSLSPEIILSCRGEIEHHCSGLHRKGRTHLCLMKVVRGEKGNLGMNCQQAQLTLIQE
 TDPGADYRIDRALNEACESVIQTACKHIRSGDPMILSCLMEHLYTEKMVEDCEHRLLELYFISRDKLD
 PVL YRKCQGDASRLCHTHGWNTESEFMPQGA VFSCLYRHAYRTEEQGRRLSRECRAEVQRILHQRAMDVK
 LDPALQDKCLIDLGKWCSEKTE T GQELECLQDHLDDL VVECRDIVGNL TELESEDIQIEALLMRACEPII
 QNFCHDVADNQIDSGDLMECLIQNKHQKDMNEKCAIGVTHFQLVQMKDFRF SYFKMACKEDV LKLC PNI
 KKKVDVVICLSTTVRNDTLQEAKEHRVSLKCRQR LRV EEEEMTEDIRLEPDL YEACKSDIKNFCSAVQYG
 NAQIEI ECKENKQLSTRCHQKVFLQETEMMDPELDYTLMRVCKQMIKRF CPEADSKTMLQCLKQNKNS
 ELMDPKCKQMITKRQITQNTDYRLNPMLRKACKADIPKFCHGILTKAKDDSELEGQVISCLKLRADQRL
 SSDCEDQIRII IQESALDYRLDPQLQLHCSDEISSLCAEAAAQEQTGQVEECLKVNLLKIKTELCKKEV
 LNMLKESKADIFVDPVLHTACALDIKHHCAAITPGRGRQMSCLMEALDKRVRLQPECKRLNDR IEMWS
 YAAKVAPADGFSDLAMQVMTSPSKNYILSVISGSICILFLIGLMCGRITKRVTRRELKDR LQYRSETMAYK
 GLVWSQDVTGSPA

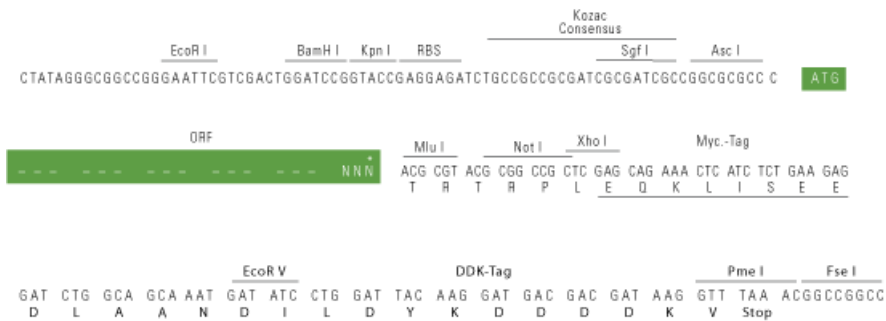
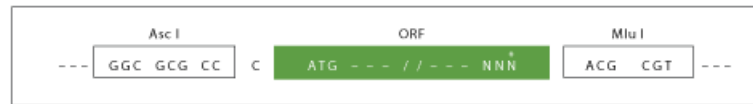
TRTRPLEQKLISEEDLAANDILDYKDDDDKV

Restriction Sites:

AscI-MluI

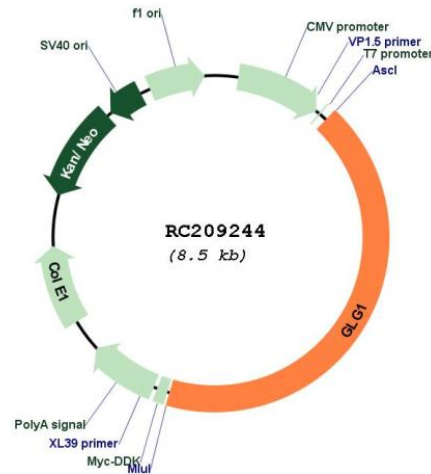
Cloning Scheme:

Cloning sites used for ORF Shuttling:



* The last codon before the Stop codon of the ORF

Plasmid Map:



ACCN: NM_012201

ORF Size: 3609 bp

OTI Disclaimer: The molecular sequence of this clone aligns with the gene accession number as a point of reference only. However, individual transcript sequences of the same gene can differ through naturally occurring variations (e.g. polymorphisms), each with its own valid existence. This clone is substantially in agreement with the reference, but a complete review of all prevailing variants is recommended prior to use. [More info](#)

OTI Annotation: This clone was engineered to express the complete ORF with an expression tag. Expression varies depending on the nature of the gene.

Components: The ORF clone is ion-exchange column purified and shipped in a 2D barcoded Matrix tube containing 10ug of transfection-ready, dried plasmid DNA (reconstitute with 100 ul of water).

Reconstitution Method:

1. Centrifuge at 5,000xg for 5min.
2. Carefully open the tube and add 100ul of sterile water to dissolve the DNA.
3. Close the tube and incubate for 10 minutes at room temperature.
4. Briefly vortex the tube and then do a quick spin (less than 5000xg) to concentrate the liquid at the bottom.
5. Store the suspended plasmid at -20°C. The DNA is stable for at least one year from date of shipping when stored at -20°C.

RefSeq: [NM_012201.3](#)

RefSeq Size: 3779 bp

RefSeq ORF: 3612 bp

Locus ID: 2734

UniProt ID: [Q92896](#)

Cytogenetics: 16q23.1

Domains:	cys_rich_FGFR
Protein Families:	Druggable Genome, Transmembrane
Protein Pathways:	Cell adhesion molecules (CAMs)
MW:	137 kDa
Gene Summary:	Binds fibroblast growth factor and E-selectin (cell-adhesion lectin on endothelial cells mediating the binding of neutrophils).[UniProtKB/Swiss-Prot Function]