

## Product datasheet for RC209240

### KIAA0247 (SUSD6) (NM\_014734) Human Tagged ORF Clone

#### Product data:

Product Type:	Expression Plasmids
Product Name:	KIAA0247 (SUSD6) (NM_014734) Human Tagged ORF Clone
Tag:	Myc-DDK
Symbol:	KIAA0247
Synonyms:	DRAGO; KIAA0247
Mammalian Cell Selection:	Neomycin
Vector:	pCMV6-Entry (PS100001)
E. coli Selection:	Kanamycin (25 ug/mL)
ORF Nucleotide Sequence:	>RC209240 ORF sequence Red=Cloning site Blue=ORF Green=Tags(s)

TTTTGTAATACGACTCACTATAGGGCGGCCGGAATTCGTCGACTGGATCCGGTACCGAGGAGATCTGCCGCCGCGATCGCC

ATGTGCCATGGCAGGATAGCACCAAGAGCACCTCAGTGTGGCCGTGGCCTCCGTGGGACATGGAGTGT  
TCCTCCGCTAGTGATCCTTTGCACCCTGCTTGGAGACGGACTTGCTCCGTGTGCCCCCTACCACCGGA  
GCCAGAGAATGGTGGCTACATCTGCCACCCCGGCCCTGCAGAGACCCCTGACAGCAGGCAGTGTATC  
GAATACCTGTGTGCTGAAGGCTACATGTTGAAGGGCGATTACAAATACCTGACGTGAAGAATGGCGAGT  
GAAACCAGCCATGGAGATTAGCTGCCGTCTCAACGAGGATAAAGACACCCACACATCACTTGGGGTCCC  
CAGCTGTCTATAGTGGCTTCTACTGCCAGCTCCGTGGCGCTCATTCTCCTCCTCGTGGTGTGTTGTG  
CTGCTGCAGCCAAAGCTGAAGTCTTCCATCATAGCAGGCGTGACCAGGGGTATCTGGGACCAGGTCT  
CCATCATGGTGGATGGAGTCCAGGTTGCACTACCATCATACGAGGAGGCTGTATATGGCAGTTCTGGTCA  
CTGTGTGCCACCTGCTGACCCAGAGTACAGATTGTGCTGTGAGAAGGTCTGGGCCAGTGGGAGGAGC  
GTGCCAAGGGAGCAACAGCTGCCGACCAAGGGCCTGCTCCTGTCAGGTGGAGAAGATGAGGCCCCAG  
GCCAGTCTGGACTATGTGAAGCCTGGGGCTCTCGGGCCTCAGAGACTGTGATGGTGCATCAGGCAACCAC  
CTCTTCTGGGTGGCCGGCTCAGGGAACCGCAACTGGCACACAAAGAACTGCAGATTCAGAGAACAGT  
GACATACAAAGCCTTTTATCCCTCAGTCAGAGGAGTACACAGATGATATTCCACTGTTGAAAGAAGCA

ACGCGTACGCGGCCGCTCGAGCAGAAACTCATCTCAGAAGAGGATCTGGCAGCAAATGATATCCTGGATT  
ACAAGGATGACGACGATAAGGTTAA



[View online »](#)

**Protein Sequence:** >RC209240 protein sequence  
Red=Cloning site Green=Tags(s)

MCHGRIAPKSTSVFAVASVGHGVFLPLVILCTLLGDGLASVCPLPPEPENGGYICHPRPCRDPLTAGSVI  
 EYLCAEGYMLKGDYKYL TCKNGEWKPAMEISCRLNEDKDTHTSLGVPTLSIVASTASSVALILLVVLFFV  
 LLQPCLKSFHHSRRDQGVSGDQVSIMVDGVQVALPSYEEAVYGSSGHCVPPADPRVQIVLSEGSGPSGRS  
 VPREQQLPDQGACSSAGGEDEAPGQSGLCEAWGSRASETMVMHQATTSSWVAGSGNRQLAHKETADSENS  
 DIQSLLSLTSEEYTDDIPLLKEA

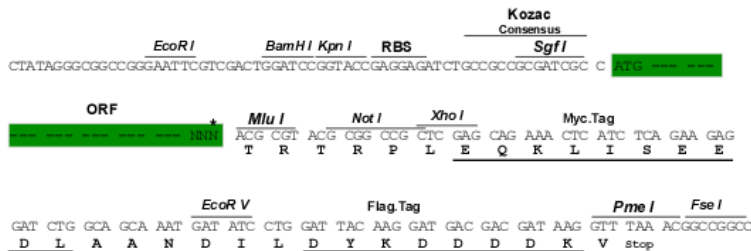
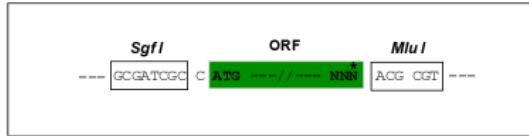
TRTRPLEQKLISEEDLAANDILDYKDDDDKLV

**Chromatograms:** [https://cdn.origene.com/chromatograms/mk6345\\_a10.zip](https://cdn.origene.com/chromatograms/mk6345_a10.zip)

**Restriction Sites:** SgfI-MluI

**Cloning Scheme:**

Cloning sites used for ORF Shuttling:



\* The last codon before the Stop codon of the ORF

**ACCN:** NM\_014734

**ORF Size:** 909 bp

**OTI Disclaimer:** The molecular sequence of this clone aligns with the gene accession number as a point of reference only. However, individual transcript sequences of the same gene can differ through naturally occurring variations (e.g. polymorphisms), each with its own valid existence. This clone is substantially in agreement with the reference, but a complete review of all prevailing variants is recommended prior to use. [More info](#)

**OTI Annotation:** This clone was engineered to express the complete ORF with an expression tag. Expression varies depending on the nature of the gene.

**Components:** The ORF clone is ion-exchange column purified and shipped in a 2D barcoded Matrix tube containing 10ug of transfection-ready, dried plasmid DNA (reconstitute with 100 ul of water).

**Reconstitution Method:**

1. Centrifuge at 5,000xg for 5min.
2. Carefully open the tube and add 100ul of sterile water to dissolve the DNA.
3. Close the tube and incubate for 10 minutes at room temperature.
4. Briefly vortex the tube and then do a quick spin (less than 5000xg) to concentrate the liquid at the bottom.
5. Store the suspended plasmid at -20°C. The DNA is stable for at least one year from date of shipping when stored at -20°C.

**RefSeq:** [NM\\_014734.4](#)

**RefSeq Size:** 5393 bp

**RefSeq ORF:** 912 bp

**Locus ID:** 9766

**UniProt ID:** [Q92537](#)

**Cytogenetics:** 14q24.1

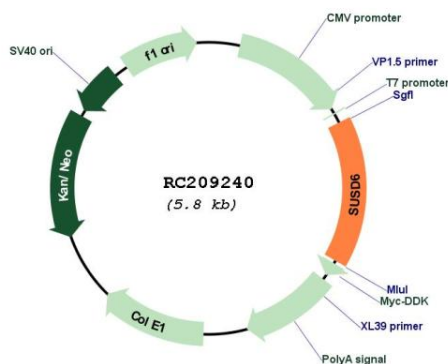
**Domains:** CCP

**Protein Families:** Transmembrane

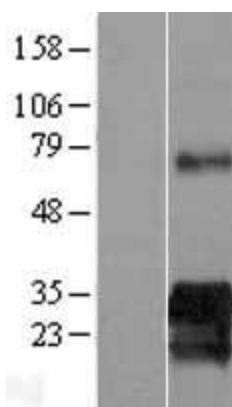
**MW:** 32.1 kDa

**Gene Summary:** May play a role in growth-suppressive activity and cell death (PubMed:24652652). May be involved in the production of chemokine molecules in umbilical vein endothelial cells (HUVECs) cultured in THP1 monocyte LPS-induced medium (PubMed:20236627). Plays a role in preventing tumor onset (By similarity).[UniProtKB/Swiss-Prot Function]

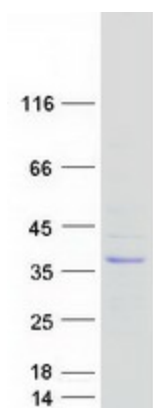
### Product images:



Circular map for RC209240



Western blot validation of overexpression lysate (Cat# [LY415070]) using anti-DDK antibody (Cat# [TA50011-100]). Left: Cell lysates from untransfected HEK293T cells; Right: Cell lysates from HEK293T cells transfected with RC209240 using transfection reagent MegaTran 2.0 (Cat# [TT210002]).



Coomassie blue staining of purified SUSD6 protein (Cat# [TP309240]). The protein was produced from HEK293T cells transfected with SUSD6 cDNA clone (Cat# RC209240) using MegaTran 2.0 (Cat# [TT210002]).