

## Product datasheet for **RC209239**

### **EPM2AIP1 (NM\_014805) Human Tagged ORF Clone**

#### **Product data:**

Product Type:	Expression Plasmids
Product Name:	EPM2AIP1 (NM_014805) Human Tagged ORF Clone
Tag:	Myc-DDK
Symbol:	EPM2AIP1
Mammalian Cell Selection:	Neomycin
Vector:	pCMV6-Entry (PS100001)
E. coli Selection:	Kanamycin (25 ug/mL)



[View online »](#)

**ORF Nucleotide Sequence:**

>RC209239 ORF sequence  
 Red=Cloning site Blue=ORF Green=Tags(s)

TTTTGTAATACGACTCACTATAGGGCGGCCGGGAATTCGTCGACTGGATCCGGTACCGAGGAGATCTGCC  
 GCC**CGGATCGCC**

ATGTGGATGACGCCAAAAGAAGCAAGATGGAAGTCGACGAGGCTCTAGTTTTCCGGCCGAGTGGACCC  
 AGCGTTATTTGGTGGTGGAGCCTCCGGAGGGCGATGGGGCCCTGTGCCTGGTCTGTGCGCCCTCATCGT  
 AGCTACCCGGAACGCGACGTCAGGCGCCACTACGAGGCTGAGCACGAATACTACGAGCGGTATGTGGCG  
 GACGGCGAGCGCGGCCCTGGTGGAGCGTCTGCGTCAGGGCGACTTGCCCGTGGCCTCCTTCACTCCTG  
 AAGAGAGAGCTGCTCGTGCAGGCCTCGGGCTCTGCCGCTTGGCCTTGAAGGGTCGCGGCTGGGGTGA  
 GGGGGACTTTGTATACCAGTGCATGGAGGTGTTGCTGAGAGAGGTAAGGCGAGCATGTAAGCGTCTG  
 CAAGGCGTTGACTTATCTCCAGATATCACAAAGGCAGAGGATCCTGAGCATTGACAGGAATCTACGCAACC  
 AGCTTTTTAACCGAGCCAGGGACTTTAAAGCCTATTCTCTTGCCTTGGACGACCAGGCTTTTGTGGCCTA  
 TGAGAACTACCTCCTGGTCTTTATCCGCGGTGTAGGCCCTGAGTTGGAGGTGCAAGAAGATCTTCTGACC  
 ATAATCAACCTGACTCATATTTCAAGTGTGGTGCCTCATGTCGCAATCCTAGAGTCCCTGCAGACAG  
 CAGGGCTTAGCTTGCAGAGAATGGTTGGACTGACCACGACCCATACTTTGAGGATGATTGGTGAGAACTC  
 AGGACTCGTCTCATACATGAGAGAAAAGGCCGTAAGCCCCAACTGTTGGAATGTCATTATTATTCAGGA  
 TTTCTTCACTTGGAACTGTTGAGCTCCTATGATGTAGATGTTAATCAGATCATAAATACCATATCCGAAT  
 GGATAGTTTTGATTAAGACCAGAGGCGTTAGGCGACCTGAATTTCAAGCTTTACTAACGGAATCTGAATC  
 AGAGCATGGTGAAGGGTAAATGGACGATGTCTGAACAATTGGCTTAGGAGAGGGAAAACCTTTAAACTA  
 ATATTCTCTAAGAAAAGAAAATGGAAGCGTCTTGGTTTCAGTAGGGGCAACAACAGTCCACTTCTCAG  
 ACAACAATGGCTTTGTGACTTTGGCTTCTTGGTGGACATTATGGAACACCTTCGAGAAGTCAAGTGAAGA  
 ATTACGAGTTAGTAAAGTCTTTGCTGCTGCTGCTTTGACCATATTTGTACTTTGAAAGTTAAGCTGAAT  
 TTATTTCAAAGACATATTGAGGAAAAAATCTAACAGACTTTCCTGCCCTCAGAGAAGTTGTTGATGAGC  
 TAAAACAGCAAAAATAGGAAGATGAAAAAATTTGATCCTGATAGGTATCAAATGGTGTCTGTCGTCT  
 CAAAAAAGAAATTTGAGAGACATTTAAGGACCTCAGGTTCAATAAAAAGGACTTAGAACTTTTTTCAAAT  
 CCATTTAACTTTAACTGAATATGCACCTATTTCAAGTGGGTTGGAGCTAACAAAACCTCAGGCAAAACA  
 CTAATCTTTGGAATGAATACAGAATCAAAGACTGGGGCAGTTTTATGCTGGATTGTCTGCTGAATCCTA  
 CCCAATTATCAAAGGGTTGCCGTGAAGGTGGCATCCTTGTGTTGATAGTAACCAATCTGTGAAAAGGCT  
 TTTTCATATTTGACTCGAAACCAACACTTTGAGTCAGCCATTAACAGATGAGCATCTCCAAGCCCTGT  
 TTCGGGTTGCCACAACCTGAAATGGAGCCGGTTGGGATGACCTTGTGAGAGAAAGAAATGAATCTAATCC  
 A

**ACGCGT**ACGCGGCCGCTCGAGCAGAAACTCATCTCAGAAGAGGATCTGGCAGCAATGATATCCTGGATT  
 ACAAGGATGACGACGATAAGGTTTAA

**Protein Sequence:**

>RC209239 protein sequence  
 Red=Cloning site Green=Tags(s)

MWMTPKRSKMEVDEALVFRPEWTQRYLVVEPPEGDGALCLVCRRLIVATRERDVRRRHYEAEHEYYERYVA  
 DGERAALVERLRQGDLPVASFPTPEERAARAGLGLCRLALKGRGWEGDFVYQCMEVLLREVLPEHVSVL  
 QGVDLSPDITRQILSIDRNLNRQLFNRARDFKAYSLALDDQAFVAYENYLLVIRGVGPELEVQEDLLT  
 IINLTHHFSVGMALMSAILESQTAGLSLQRMVGLTTHTLRMIGENSGLVSYMREKAVSPNCWNVIIHYSG  
 FLHLELLSSYDQVQIINTISEWIVLIKTRGVRRPEFQTLTTESEHGERVNGRCLNNWLRGKTLKL  
 IFSLRKEMEAFLVSVGATTVHFSDKQWLCDFGLVDIMEHLRELSEELRVSKVFAAAAFDHICTFEVKLN  
 LFQRHIEEKNLTDFPALREVVDLQKQNKEDKIFDPRYQMVICRLQKEFERHFKDLRFIKKDLLELFSN  
 PFNFKPEYAPISVRVELTKLQANTNLWNEYRIKDLGQFYAGLSAESYPIIKGVACKVASLFDNSQICEKA  
 FSYLTRNQHTLSQPLTDEHLQALFRVATTEMPEGWDDLVRERNE SNP

**TR**TRPLEQKLISEEDLAANDILDYKDDDDKV

**Chromatograms:**

[https://cdn.origene.com/chromatograms/mk6512\\_h02.zip](https://cdn.origene.com/chromatograms/mk6512_h02.zip)

**Restriction Sites:** SgfI-MluI

**Cloning Scheme:**



**ACCN:** NM\_014805

**ORF Size:** 1821 bp

**OTI Disclaimer:** The molecular sequence of this clone aligns with the gene accession number as a point of reference only. However, individual transcript sequences of the same gene can differ through naturally occurring variations (e.g. polymorphisms), each with its own valid existence. This clone is substantially in agreement with the reference, but a complete review of all prevailing variants is recommended prior to use. [More info](#)

**OTI Annotation:** This clone was engineered to express the complete ORF with an expression tag. Expression varies depending on the nature of the gene.

**Components:** The ORF clone is ion-exchange column purified and shipped in a 2D barcoded Matrix tube containing 10ug of transfection-ready, dried plasmid DNA (reconstitute with 100 ul of water).

- Reconstitution Method:**
1. Centrifuge at 5,000xg for 5min.
  2. Carefully open the tube and add 100ul of sterile water to dissolve the DNA.
  3. Close the tube and incubate for 10 minutes at room temperature.
  4. Briefly vortex the tube and then do a quick spin (less than 5000xg) to concentrate the liquid at the bottom.
  5. Store the suspended plasmid at -20°C. The DNA is stable for at least one year from date of shipping when stored at -20°C.

**RefSeq:** [NM\\_014805.4](#)

**RefSeq Size:** 7439 bp

**RefSeq ORF:** 1824 bp

**Locus ID:** 9852

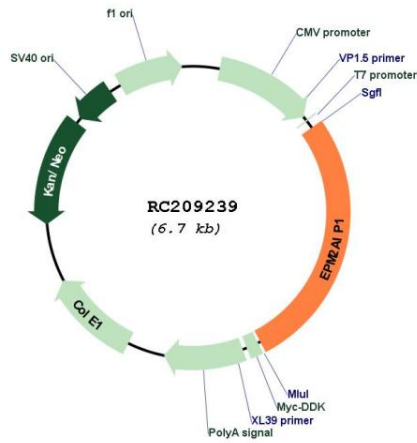
**UniProt ID:** [Q7L775](#)

**Cytogenetics:** 3p22.2

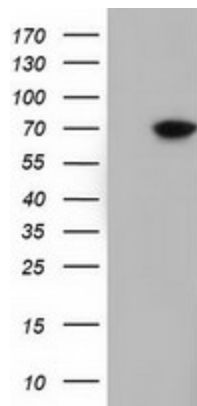
**MW:** 70.4 kDa

**Gene Summary:** The EPM2A gene, which encodes laforin, is mutated in an autosomal recessive form of adolescent progressive myoclonus epilepsy. The protein encoded by this gene binds to laforin, but its function is not known. This gene is intronless. [provided by RefSeq, Oct 2008]

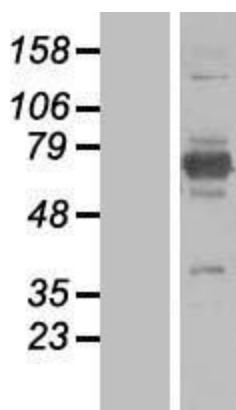
**Product images:**



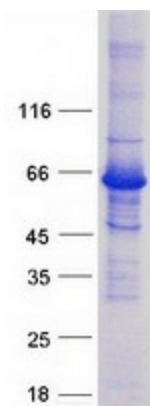
Circular map for RC209239



HEK293T cells were transfected with the pCMV6-ENTRY control (Cat# [PS100001], Left lane) or pCMV6-ENTRY EPM2AIP1 (Cat# RC209239, Right lane) cDNA for 48 hrs and lysed. Equivalent amounts of cell lysates (5 ug per lane) were separated by SDS-PAGE and immunoblotted with anti-EPM2AIP1 (Cat# [TA501797]). Positive lysates [LY415014] (100ug) and [LC415014] (20ug) can be purchased separately from OriGene.



Western blot validation of overexpression lysate (Cat# [LY415014]) using anti-DDK antibody (Cat# [TA50011-100]). Left: Cell lysates from untransfected HEK293T cells; Right: Cell lysates from HEK293T cells transfected with RC209239 using transfection reagent MegaTran 2.0 (Cat# [TT210002]).



Coomassie blue staining of purified EPM2AIP1 protein (Cat# [TP309239]). The protein was produced from HEK293T cells transfected with EPM2AIP1 cDNA clone (Cat# RC209239) using MegaTran 2.0 (Cat# [TT210002]).