

## Product datasheet for **RC209236**

### AMMECR1 (NM\_001025580) Human Tagged ORF Clone

#### Product data:

**Product Type:** Expression Plasmids  
**Product Name:** AMMECR1 (NM\_001025580) Human Tagged ORF Clone  
**Tag:** Myc-DDK  
**Symbol:** AMMECR1  
**Synonyms:** AMMERC1; MFHIEN  
**Mammalian Cell Selection:** Neomycin  
**Vector:** pCMV6-Entry (PS100001)  
**E. coli Selection:** Kanamycin (25 ug/mL)  
**ORF Nucleotide Sequence:** >RC209236 ORF sequence  
 Red=Cloning site Blue=ORF Green=Tags(s)

TTTTGTAATACGACTCACTATAGGGCGGCCGGAATTCGTCGACTGGATCCGGTACCGAGGAGATCTGCC  
 GCC**CGGATCGCC**

ATGGCGGCGGGTTGCTGCGGGGTGAAGAAGCAGAACTGTCCAGTTCGCCCCCTCTGGCTCGGGTGGCG  
 GTGGTGGCGCCTCCTCCTCCACTGCAGCGGAGAGAGCCAGTGCCGAGCTGGGGAGCTGGGACTAGG  
 AGGCGCCGGTACGCGGCTCAACGGGCTGGGAGGTCTAACCGGAGGAGGTAGCGGCAGCGGCTGTACCCTC  
 TCTCCCCCAGGGCTGCGGCGGCGGCGGGGGGATCGCCCTGTCGCCACCTCCGAGCTGCGGAGTGG  
 GGACCCTACTTTCTACCCCGGCCGCCACCTTCTCACCCTCCTCATCGTCCGCCCTCGTCCTC  
 ATCGCCGGGCTCCCGAAGATGGTGTGTCAGCAGAGATGTGCTGCTTTTGCTTCGATGTGCTCTACTGT  
 CACCTGTATGGATACCAGCAGCCCCGGACCCCCGATTACCAACGAGCCCTATGCCCTTAAGATAGCC  
 GTTTTCCCCCAATGACAAGGGATGAGCTGCCACGGCTTTTCTGCTCAGTGTCTGCTCACTAATTTGA  
 AGATGTCTGTGATTATTTGGACTGGGAGGTGGGTGTACATGGCATTAGAATAGAATTCATCAATGAAAA  
 GGATCAAAACGCACCGCCACCTACCTACCGAGGTTGCAAAGGAGCAAGGATGGGACCATATACAGACCA  
 TAGACTCCTTATTGAGGAAAGGAGGATACAAAGCTCCGATTACTAATGAATTCAGGAAAACCATAAACT  
 GACCAGGTATCGTAGTGAAAAGATGACCCTGAGCTATGCTGAATACCTTGCTCATCGCCAGCATCATCAT  
 TTCCAAAATGGCATTGGGCATCCCTTCGGCCATACAACCATTATCC

**ACGCGT**ACGCGGCGCCTCGAGCAGAAACTCATCTCAGAAGAGGATCTGGCAGCAAATGATATCCTGGATT  
 ACAAGGATGACGACGATAAGGTTTAA



[View online »](#)

**Protein Sequence:** >RC209236 protein sequence  
Red=Cloning site Green=Tags(s)

MAAGCCGVKKQKLSSPPSGSGGGGASSSSHCSGESQCRAGELGLGGAGTRLNGLGGLTGGGSGSGCTL  
 SPPQCGGGGGIALLSPPPSCGVGTLLSTPAAATSSSPSSSAASSSSPGSRKMVVAEMCCFCFDVLYC  
 HLYGYQPRTPRFTNEPYALKDSRFPPMTRDELPRLFCSVSLLTNFEDVCDYLDWEVGVHGIRIEFINEK  
 GSKRTATYLP EVAKEQGW DHIQTIDSLLRKGGYKAPITNEFRKTIKLTRYRSEKMTLSYAEYLAHRQH  
 HH FQNGIGHPLPPYNYHS

TRTRPLEQKLISEEDLAANDILDYKDDDDKV

**Chromatograms:** [https://cdn.origene.com/chromatograms/mk6345\\_d02.zip](https://cdn.origene.com/chromatograms/mk6345_d02.zip)

**Restriction Sites:** SgfI-MluI

**Cloning Scheme:**

Cloning sites used for ORF Shuttling:



\* The last codon before the Stop codon of the ORF

**ACCN:** NM\_001025580

**ORF Size:** 888 bp

**OTI Disclaimer:** The molecular sequence of this clone aligns with the gene accession number as a point of reference only. However, individual transcript sequences of the same gene can differ through naturally occurring variations (e.g. polymorphisms), each with its own valid existence. This clone is substantially in agreement with the reference, but a complete review of all prevailing variants is recommended prior to use. [More info](#)

**OTI Annotation:** This clone was engineered to express the complete ORF with an expression tag. Expression varies depending on the nature of the gene.

**Components:** The ORF clone is ion-exchange column purified and shipped in a 2D barcoded Matrix tube containing 10ug of transfection-ready, dried plasmid DNA (reconstitute with 100 ul of water).

**Reconstitution Method:**

1. Centrifuge at 5,000xg for 5min.
2. Carefully open the tube and add 100ul of sterile water to dissolve the DNA.
3. Close the tube and incubate for 10 minutes at room temperature.
4. Briefly vortex the tube and then do a quick spin (less than 5000xg) to concentrate the liquid at the bottom.
5. Store the suspended plasmid at -20°C. The DNA is stable for at least one year from date of shipping when stored at -20°C.

**RefSeq:** [NM\\_001025580.2](#)

**RefSeq Size:** 5320 bp

**RefSeq ORF:** 891 bp

**Locus ID:** 9949

**UniProt ID:** [Q9Y4X0](#)

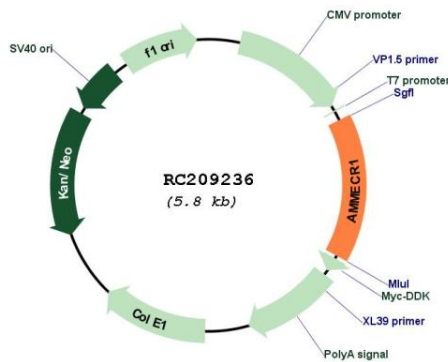
**Cytogenetics:** Xq23

**Protein Families:** Druggable Genome

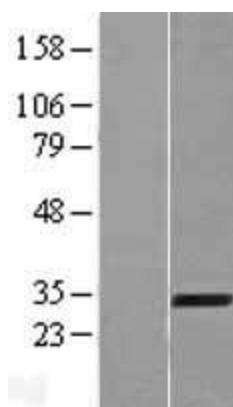
**MW:** 31.3 kDa

**Gene Summary:** The exact function of this gene is not known, however, submicroscopic deletion of the X chromosome including this gene, COL4A5, and FACL4 genes, result in a contiguous gene deletion syndrome, the AMME complex (Alport syndrome, mental retardation, midface hypoplasia, and elliptocytosis). Alternatively spliced transcript variants encoding different isoforms have been found for this gene. [provided by RefSeq, Jan 2010]

### Product images:



Circular map for RC209236



Western blot validation of overexpression lysate (Cat# [LY422449]) using anti-DDK antibody (Cat# [TA50011-100]). Left: Cell lysates from untransfected HEK293T cells; Right: Cell lysates from HEK293T cells transfected with RC209236 using transfection reagent MegaTran 2.0 (Cat# [TT210002]).