

Product datasheet for **RC209235**

SCARA3 (NM_182826) Human Tagged ORF Clone

Product data:

Product Type:	Expression Plasmids
Product Name:	SCARA3 (NM_182826) Human Tagged ORF Clone
Tag:	Myc-DDK
Symbol:	SCARA3
Synonyms:	APC7; CSR; CSR1; MSLR1; MSRL1
Mammalian Cell Selection:	Neomycin
Vector:	pCMV6-Entry (PS100001)
E. coli Selection:	Kanamycin (25 ug/mL)



[View online »](#)

ORF Nucleotide Sequence:

>RC209235 ORF sequence
 Red=Cloning site Blue=ORF Green=Tags(s)

TTTTGTAATACGACTCACTATAGGGCGGCCGGAATTCGTCGACTGGATCCGGTACCGAGGAGATCTGCC
 GCC**CGGATCGCC**

ATGAAAGTGAGGTCGGCCGGCGGATGGAGATGCCTTGTGCGTTACAGAAGAGGACCTGGCGGGTGACG
 ACGAGGACATGCCGACCTTCCCATGCACCCAGAAGGGCCGGCCAGGGCCCGCTGCAGCCCTGCCAGAA
 GAACCTATCTTTGCACACATCGGTGCGGATTCTTTACCTCTTCTGGCCCTGCTCCTGGTGGCCGTGGCT
 GTGTTGGCCTCTCTGTTTTCAGAAAAGTGGACTCTCTCCGAAGACATCTCCTTGACCCAGTCTATTT
 ATGACAAGAAGCTTGTGTTAATGCAGAAAAATCTCCAGGGCCTGGATCCGAAAGCCCTGAACAAGTCTC
 TTTCTGCCATGAAGCTGGGCAGCTGGGGCCAGAGATCCGAAAAGTGCAGGAGGAGCTGGAGGGAATTCAG
 AAGCTGCTTCTGGCCAGGAGTGCAGCTGGACCAGACCTTACAGGCCAGGAGGTGCTCTCCACCACCA
 GCAGACAAATCTCCAGGAGATGGGCAGTTGCTCCTTCTCCATCCACCAGTTAACCAGTCTCTGGGGCT
 CTTCTGGCCAGGTGAGAGGCTGGCAGGCCACCACAGCTGGCCTGGACCTCTCTGAAGGACCTCACC
 CAGGAGTGTACGATGTCAAGGCTGCAGTGCACACAGATCAACTTACCGTGGGGCAGACTCCGAGTGGA
 TCCACGGGATCCAGCGGAAGACAGACGAGGAGACCCTGACCTCCAGAAGATTGTACCCGACTGGCAGAA
 CTACACACGGCTCTTACGCGCCTGCGCACACCTCCACCAAGACTGGAGAGGCGGTCAAGAATCCAG
 GCCACCTGGGGGCTCCTCACAGCGCATCAGCCAGAAGTGCAGAGCATGCACGACCTGGTACTCCAGG
 TCATGGGCTTGCAGCTGCAGCTGGATAACATCTCGTCTTCTGGATGACCACGAAGAGAACATGCATGA
 TCTTCAGTACCATAACCACTACGCCCAGAACCAGTGTGGAGAGGTTTGTAGTCTCTGGAAGGACGCATG
 GCTTCTCAGGAGATTGAAATGGCACCATCTTACCAACATCAATGCCACCGACAACCACGTGCACAGCA
 TGCTCAAGTACCTGGATGACGTGCGGCTCTCTGCACGCTGGGCTCCACACCCATGCCGAGGAGCTCTA
 CTACCTGAACAAGTCTGTCTCCATCATGCTGGGCACCACAGACCTGCTCCGGGAGCGCTTACGCTGCTC
 AGTGCCCGGCTGGACCTCAACGTCCGGAACCTCTCCATGATCGTGGAGGAGATGAAGGCAGTGGACACAC
 AGCATGGAGAAATCCTTCGCAATGTCACCATCCTACGAGGTCACACTTTGTTTTACATAATCGGATA

ACGCGTACGCGGCCGCTCGAGCAGAAACTCATCTCAGAAGAGGATCTGGCAGCAAATGATATCCTGGATT
 ACAAGGATGACGACGATAAGGTTTAA

Protein Sequence:

>RC209235 protein sequence
 Red=Cloning site Green=Tags(s)

MKVRSAGGDGDALCVTEEDLAGDDEDMPTFPCTQKGRPGPRCSRCQKNLSLHTSVRILYLFLALLLVAVA
 VLASLVFRKVDSLSEDISLTQSIYDKKLVLQMKNLQGLDPKALNNSFCHEAGQLGPEIRKLQEELEGIQ
 KLLLLAQEVQLDQTLQAQEVLSTTSRQISQEMGSCSFSIHQVNSLGLFLAQVRGWQATTAGLDLSLKDLT
 QECYDVKA AVHQINFTVGQTSEWIIHQIRKTDEETLTLQKIVTDWQNYTRLFSGLRRTTSTKTEAVKNIQ
 ATLGASSQRISQNSESMHDLVLQVMGLQLQLDNISSFLDDHEENMHDLYHHTHYAQNRTVERFESLEGRM
 ASHEIEIGTIFTNINATDNHVSMLKYLDDVRLSCTLGFHTHAELYYLNKSVS IMLGTTDLLRERFSL
 SARLDLNRNLSMIVEEMKAVDTQHGEILRNVTILRGHTLFSHNRI

TRTRPLEQKLISEEDLAANDILDYKDDDDKV

Chromatograms:

https://cdn.origene.com/chromatograms/mk6512_h07.zip

Restriction Sites:

Sgfl-Mlul

Cloning Scheme:


ACCN: NM_182826

ORF Size: 1398 bp

OTI Disclaimer: The molecular sequence of this clone aligns with the gene accession number as a point of reference only. However, individual transcript sequences of the same gene can differ through naturally occurring variations (e.g. polymorphisms), each with its own valid existence. This clone is substantially in agreement with the reference, but a complete review of all prevailing variants is recommended prior to use. [More info](#)

OTI Annotation: This clone was engineered to express the complete ORF with an expression tag. Expression varies depending on the nature of the gene.

Components: The ORF clone is ion-exchange column purified and shipped in a 2D barcoded Matrix tube containing 10ug of transfection-ready, dried plasmid DNA (reconstitute with 100 ul of water).

- Reconstitution Method:**
1. Centrifuge at 5,000xg for 5min.
 2. Carefully open the tube and add 100ul of sterile water to dissolve the DNA.
 3. Close the tube and incubate for 10 minutes at room temperature.
 4. Briefly vortex the tube and then do a quick spin (less than 5000xg) to concentrate the liquid at the bottom.
 5. Store the suspended plasmid at -20°C. The DNA is stable for at least one year from date of shipping when stored at -20°C.

RefSeq: [NM_182826.1](#), [NP_878185.1](#)

RefSeq Size: 1711 bp

RefSeq ORF: 1401 bp

Locus ID: 51435

UniProt ID: [Q6AZY7](#)

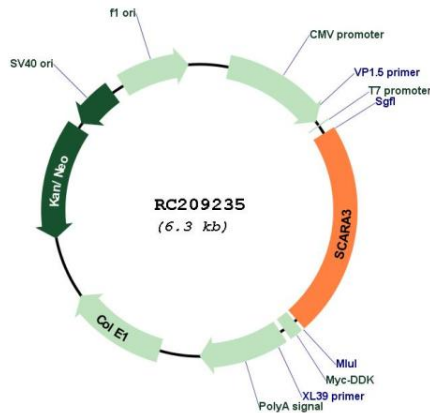
Cytogenetics: 8p21.1

Protein Families: Druggable Genome, Transmembrane

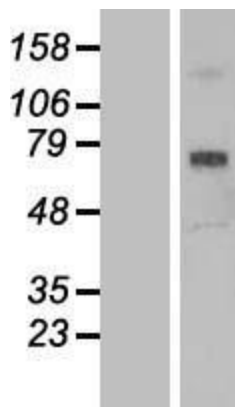
MW: 52.4 kDa

Gene Summary: This gene encodes a macrophage scavenger receptor-like protein. This protein has been shown to deplete reactive oxygen species, and thus play an important role in protecting cells from oxidative stress. The expression of this gene is induced by oxidative stress. Alternatively spliced transcript variants encoding distinct isoforms have been described. [provided by RefSeq, Jul 2008]

Product images:



Circular map for RC209235



Western blot validation of overexpression lysate (Cat# [LY405369]) using anti-DDK antibody (Cat# [TA50011-100]). Left: Cell lysates from untransfected HEK293T cells; Right: Cell lysates from HEK293T cells transfected with RC209235 using transfection reagent MegaTran 2.0 (Cat# [TT210002]).