

Product datasheet for RC209232

ELOVL2 (NM_017770) Human Tagged ORF Clone

Product data:

Product Type:	Expression Plasmids
Product Name:	ELOVL2 (NM_017770) Human Tagged ORF Clone
Tag:	Myc-DDK
Symbol:	ELOVL2
Synonyms:	SSC2
Mammalian Cell Selection:	Neomycin
Vector:	pCMV6-Entry (PS100001)
E. coli Selection:	Kanamycin (25 ug/mL)
ORF Nucleotide Sequence:	>RC209232 representing NM_017770 Red=Cloning site Blue=ORF Green=Tags(s)

TTTTGTAATACGACTCACTATAGGGCGCCGGGAATTCGTCGACTGGATCCGGTACCGAGGAGATCTGCC
GCC**CGATCGCC**

ATGGAACATCTAAAGGCCTTTGATGATGAAATCAATGCTTTTTGGACAATATGTTGGACCGCGAGATT
CTCGAGTCAGAGGGTGGTTCATGTTGGACTCTTACCTTCTACCTTTTTCTTACTGTATGTATCTGCT
CTCAATATGGCTGGTAACAAGTATATGAAGAACAGACCTGCTCTTCTCAGGGGTATCCTCACCTTG
TATAATCTTGAATCACACTTCTATCCGCGTACATGCTGGCAGAGCTCATTCTCCTCACTTGGGAAGGAG
GCTACAACCTACAGTGTCAAGATCTTACCAGCGCAGGGGAAGCTGACATCCGGGTAGCCAAGGTGCTTTG
GTGGTACTATTTCTCAAATCAGTAGAGTTCCTGGACACAATTTCTTCGTTTTGCGGAAAAAACGAGT
CAGATTACTTTTCTTATGTATATCATCATGCTTCTATGTTTAAACATCTGGTGGTGTGCTTGAACCTGGA
TACCTTGTGGACAAAGTTTCTTTGGACCAACACTGAACAGTTTTATCCACATTCTTATGTAATCCTACTA
TGGACTTTCTGTGTTCCATCTATGCACAAGTATCTTTGGTGGAAAGAAATATCTCACACAGGCTCAGCTG
GTGCAGTTCGTGCTCGCCATCACGCACACCATGAGCGCCGTCGTGAAACCGTGTGGCTTCCCCTTCGGTT
GTCTCATCTTCCAGTCATCTTATGCTAACGTTAGTCATCTCTTCTTAAATTTTTACGTTTCAGACATA
CCGAAAAAGCCAATGAAGAAAGATATGCAAGAGCCACCTGCAGGAAAGAAGTGAAGAATGTTTTTCC
AAAGCCTACTTCACTGCAGCAAATGGAGTGATGAACAAGAAAGCACAA

ACGCGTACGCGGCCGCTCGAGCAGAAACTCATCTCAGAAGAGGATCTGGCAGCAAATGATATCCTGGATT
ACAAGGATGACGACGATAAGGTTTAA



[View online »](#)

Protein Sequence: >RC209232 representing NM_017770
Red=Cloning site Green=Tags(s)

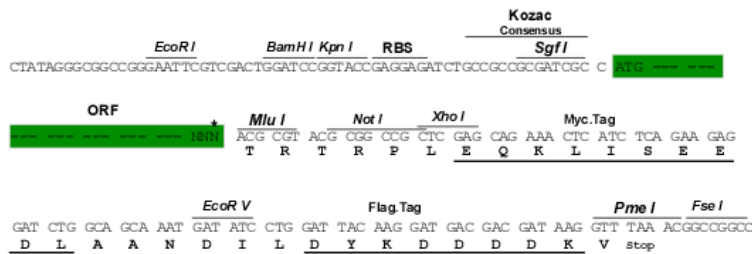
MEHLKAFDDEINAFLDNMFGRDPSRVRGWFMLDSYLPFFLTVMYLLSIWLGNKYMKNRPALSLRGILTL
 YNLGITLLSAYMLAELILSTWEGGYNLQCQDLTSAGEADIRVAKVLWVYFYSKSVFELDTIFFVLRKKT
 QITFLHVVYHSHMFNIWCVLNIWIPCGQSFPGPTLNSFIHILMYSYYGLSVFSPMHKYLWKKYLTAQL
 VQFVLAITHMMSAVVKPCGFPGCLIFQSSYMLTLVILFLNFYVQTYRKKPMKKDMQEPAGKEVKNF
 S KAYFTAANGVMNKAQ

TRTRPLEQKLISEEDLAANDILDYKDDDDKV

Restriction Sites: SgfI-MluI

Cloning Scheme:

Cloning sites used for ORF Shuttling:



ACCN: NM_017770

ORF Size: 888 bp

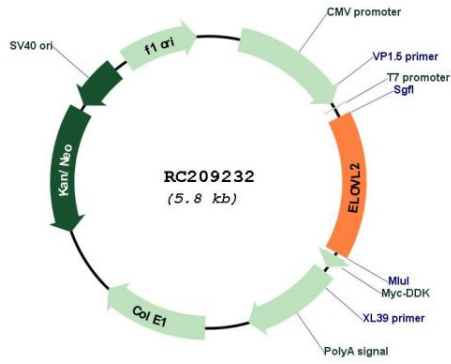
OTI Disclaimer: The molecular sequence of this clone aligns with the gene accession number as a point of reference only. However, individual transcript sequences of the same gene can differ through naturally occurring variations (e.g. polymorphisms), each with its own valid existence. This clone is substantially in agreement with the reference, but a complete review of all prevailing variants is recommended prior to use. [More info](#)

OTI Annotation: This clone was engineered to express the complete ORF with an expression tag. Expression varies depending on the nature of the gene.

Components: The ORF clone is ion-exchange column purified and shipped in a 2D barcoded Matrix tube containing 10ug of transfection-ready, dried plasmid DNA (reconstitute with 100 ul of water).

Reconstitution Method:	<ol style="list-style-type: none">1. Centrifuge at 5,000xg for 5min.2. Carefully open the tube and add 100ul of sterile water to dissolve the DNA.3. Close the tube and incubate for 10 minutes at room temperature.4. Briefly vortex the tube and then do a quick spin (less than 5000xg) to concentrate the liquid at the bottom.5. Store the suspended plasmid at -20°C. The DNA is stable for at least one year from date of shipping when stored at -20°C.
RefSeq:	<u>NM_017770.2</u> , <u>NP_060240.2</u>
RefSeq Size:	4079 bp
RefSeq ORF:	891 bp
Locus ID:	54898
UniProt ID:	<u>Q9NXB9</u>
Cytogenetics:	6p24.2
Domains:	ELO
Protein Families:	Transmembrane
Protein Pathways:	Biosynthesis of unsaturated fatty acids
MW:	34.6 kDa
Gene Summary:	Catalyzes the first and rate-limiting reaction of the four reactions that constitute the long-chain fatty acids elongation cycle. This endoplasmic reticulum-bound enzymatic process allows the addition of 2 carbons to the chain of long- and very long-chain fatty acids (VLCFAs) per cycle. Condensing enzyme that catalyzes the synthesis of polyunsaturated very long chain fatty acid (C20- and C22-PUFA), acting specifically toward polyunsaturated acyl-CoA with the higher activity toward C20:4(n-6) acyl-CoA. May participate in the production of polyunsaturated VLCFAs of different chain lengths that are involved in multiple biological processes as precursors of membrane lipids and lipid mediators.[UniProtKB/Swiss-Prot Function]

Product images:



Circular map for RC209232