

Product datasheet for RC209227

Zhangfei (CREBZF) (NM_001039618) Human Tagged ORF Clone

Product data:

Product Type:	Expression Plasmids
Product Name:	Zhangfei (CREBZF) (NM_001039618) Human Tagged ORF Clone
Tag:	Myc-DDK
Symbol:	Zhangfei
Synonyms:	SMILE; ZF
Mammalian Cell Selection:	Neomycin
Vector:	pCMV6-Entry (PS100001)
E. coli Selection:	Kanamycin (25 ug/mL)
ORF Nucleotide Sequence:	>RC209227 representing NM_001039618 Red=Cloning site Blue=ORF Green=Tags(s)

CTATAGGGCGCCCGGAATTCGTCGACTGGATCCGGTACCGAGGAGATCTGCCGCCGCGATCGCCGGCCG
GCC

ATGAGGCATAGCCTGACCAAGCTGCTGGCAGCCTCGGGCAGCAACTTCCCAACCCGAGTGAGAGCCCGG
AGCCGGCTGCAACTTGTTTCGCTGCCCTCTGACCTGACCCGGGCTGCAGCGGGGAGGAGAGACGGCGG
GGCCGGATCTCCCGCCCAAGCAGCAGTTTGGCGACGAAGGAGATTGGAAGCCGGGAGGGGAGCCGC
GGCGCGTGGCCGTGCGCGGCCCTCCCCGAGGAGATGGAGGAGGCGATCGCCAGCCTCCCGGGG
AAGAGACGGAGGATATGGACTTTCTGTCTGGGCTGGAAGTGGCGGATCTCCTGGACCCAGGCAACCGGA
CTGGCACCTGGACCCCGGCTTAGCTCGCCGGGCTCTCTCCTCGTCTGGCGGAGGCTCGGATAGCGGC
GGCCTGTGGAGAGGGGACGATGACGATGAGGCCGGCTGCTGAAATGCAGCGCTTCTCTGACCTGCTGC
AAAGGCTGTTAAACGGTATCGGAGGCTGCAGCAGCAGCAGTGACAGTGGCAGCGCCGAAAAGAGCGGAG
AAAGTCCCAGGAGGAGGCGCGGTGGCGGCAGCGGTAACGACAACAACAGGCGGCGACAAGAGTCCC
CGGAAGGCGGCGCGCCGCTGCCCGCTTAATCGACTGAAGAAGAAGGAGTACGTGATGGGGCTGGAGA
GTCGAGTCCGGGTCTGGCAGCCGAGAACCAGGAGCTGCGGGCCGAGAATCGGGAGCTGGCAACCGCT
ACAGGCACTGCAGGAGGAGTCTGCTACCTACGGCAGTCTTAGCCAACGAGACTGGACTGGCTCGCTTG
CTGAGCCGGCTGAGCGGCTGGGACTGCGGCTGACCACCTCGCTTTAGAGACTCGCCCGCGGTGACC
ACGACTACGCTCTGCCGGTGGAAAGCAGAAGCAGGACCTGCTGGAAGAGGACGACTCGCGGGAGGAGT
CTGTCTCCATGTGACAAGGATAAGGTGTGGTGGAGTTCTGCTCGGCGTGCGCCCGGAAGGCGTCTCT
TCTCTAAATG

AGCGGACCGACGCGTACGCGCCGCTCGAGCAGAACTCATCTCAGAAGAGGATCTGGCAGCAAATGATATCC
TGGATTACAAGGATGACGACGATAAGGTTTAA



[View online »](#)

Protein Sequence: >RC209227 representing NM_001039618
 Red=Cloning site Green=Tags(s)

MRHSLTKLLAASGSNFPTRSESPPEAATCSLPSDLTRAAAGEEETAAAGSPGRKQQFGDEGELEAGRGSR
 GGVAVRAPSPEEMEEEAIASLPGEETEDMDFLSGLELADLLDPRQPDWHLDPGLSSPGPLSSSGGSDSG
 GLWRGDDDDDEAAAEMQRFSDLLQRLNLNGIGCCSSSDSGSAEKRRRSPGGGGGGSGNDNNQAATKSP
 RKAAAAAARLNRLKKKEYVMGLESRVRLAAENQELRAENRELGKRVQALQEESRYLRVLANETGLARL
 L.SRLSGVGLRLTSLFRDSPAGDHDYALPVGKQKQDLLEEDDSAGGVCLHVDKDKVSVFEFCACARKASS
 SLKM

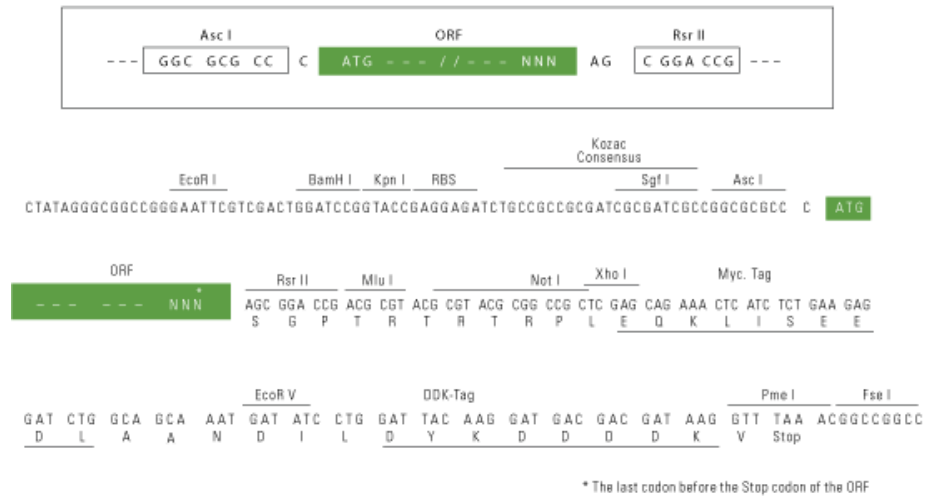
SGPTRRRLEQKLI SEEDLAANDILDYKDDDDKV

Chromatograms: https://cdn.origene.com/chromatograms/mg2930_f05.zip

Restriction Sites: AscI-RsrII

Cloning Scheme:

Cloning sites used for ORF Shuttling:



ACCN: NM_001039618

ORF Size: 1062 bp

OTI Disclaimer: The molecular sequence of this clone aligns with the gene accession number as a point of reference only. However, individual transcript sequences of the same gene can differ through naturally occurring variations (e.g. polymorphisms), each with its own valid existence. This clone is substantially in agreement with the reference, but a complete review of all prevailing variants is recommended prior to use. [More info](#)

OTI Annotation: This clone was engineered to express the complete ORF with an expression tag. Expression varies depending on the nature of the gene.

Components: The ORF clone is ion-exchange column purified and shipped in a 2D barcoded Matrix tube containing 10ug of transfection-ready, dried plasmid DNA (reconstitute with 100 ul of water).

Reconstitution Method:

1. Centrifuge at 5,000xg for 5min.
2. Carefully open the tube and add 100ul of sterile water to dissolve the DNA.
3. Close the tube and incubate for 10 minutes at room temperature.
4. Briefly vortex the tube and then do a quick spin (less than 5000xg) to concentrate the liquid at the bottom.
5. Store the suspended plasmid at -20°C. The DNA is stable for at least one year from date of shipping when stored at -20°C.

RefSeq: [NM_001039618.4](#)

RefSeq Size: 7304 bp

RefSeq ORF: 1065 bp

Locus ID: 58487

UniProt ID: [Q9NS37](#)

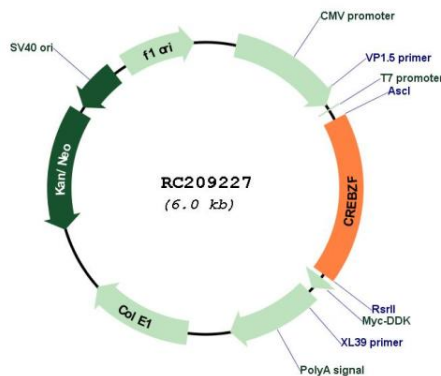
Cytogenetics: 11q14.1

Protein Families: Transcription Factors

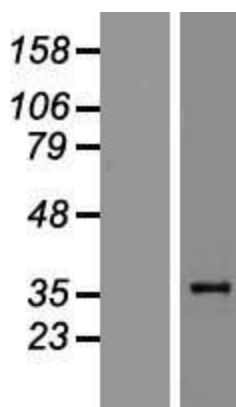
MW: 37 kDa

Gene Summary: Strongly activates transcription when bound to HCFC1. Suppresses the expression of HSV proteins in cells infected with the virus in a HCFC1-dependent manner. Also suppresses the HCFC1-dependent transcriptional activation by CREB3 and reduces the amount of CREB3 in the cell. Able to down-regulate expression of some cellular genes in CREBZF-expressing cells. [UniProtKB/Swiss-Prot Function]

Product images:



Circular map for RC209227



Western blot validation of overexpression lysate (Cat# [LY422094]) using anti-DDK antibody (Cat# [TA50011-100]). Left: Cell lysates from untransfected HEK293T cells; Right: Cell lysates from HEK293T cells transfected with RC209227 using transfection reagent MegaTran 2.0 (Cat# [TT210002]).