

## Product datasheet for RC209219L1

### TRIB1 (NM\_025195) Human Tagged Lenti ORF Clone

#### Product data:

Product Type:	Expression Plasmids
Product Name:	TRIB1 (NM_025195) Human Tagged Lenti ORF Clone
Tag:	Myc-DDK
Symbol:	TRIB1
Synonyms:	C8FW; GIG-2; GIG2; SKIP1; TRB-1; TRB1
Mammalian Cell Selection:	None
Vector:	pLenti-C-Myc-DDK (PS100064)
E. coli Selection:	Chloramphenicol (34 ug/mL)
ORF Nucleotide Sequence:	The ORF insert of this clone is exactly the same as(RC209219).
Restriction Sites:	SgfI-MluI
Cloning Scheme:	

Cloning sites used for ORF Shuttling:



\* The last codon before the Stop codon of the ORF.

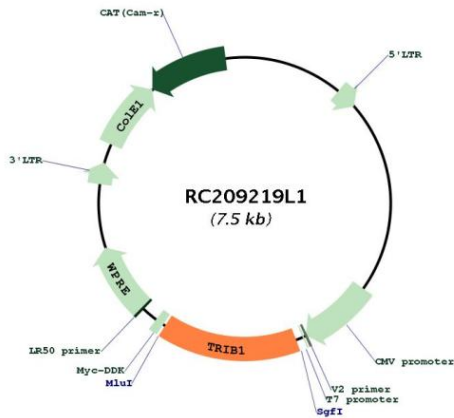
ACCN:	NM_025195
ORF Size:	1116 bp



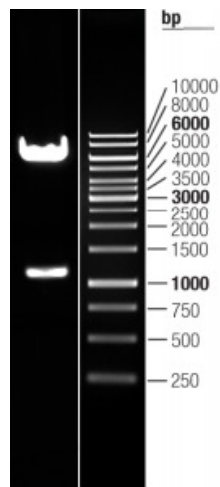
[View online >](#)

<b>OTI Disclaimer:</b>	The molecular sequence of this clone aligns with the gene accession number as a point of reference only. However, individual transcript sequences of the same gene can differ through naturally occurring variations (e.g. polymorphisms), each with its own valid existence. This clone is substantially in agreement with the reference, but a complete review of all prevailing variants is recommended prior to use. <a href="#">More info</a>
<b>OTI Annotation:</b>	This clone was engineered to express the complete ORF with an expression tag. Expression varies depending on the nature of the gene.
<b>Components:</b>	The ORF clone is ion-exchange column purified and shipped in a 2D barcoded Matrix tube containing 10ug of transfection-ready, dried plasmid DNA (reconstitute with 100 ul of water).
<b>Reconstitution Method:</b>	<ol style="list-style-type: none"><li>1. Centrifuge at 5,000xg for 5min.</li><li>2. Carefully open the tube and add 100ul of sterile water to dissolve the DNA.</li><li>3. Close the tube and incubate for 10 minutes at room temperature.</li><li>4. Briefly vortex the tube and then do a quick spin (less than 5000xg) to concentrate the liquid at the bottom.</li><li>5. Store the suspended plasmid at -20°C. The DNA is stable for at least one year from date of shipping when stored at -20°C.</li></ol>
<b>RefSeq:</b>	<a href="#">NM_025195.2</a>
<b>RefSeq Size:</b>	3649 bp
<b>RefSeq ORF:</b>	1119 bp
<b>Locus ID:</b>	10221
<b>UniProt ID:</b>	<a href="#">Q96RU8</a>
<b>Cytogenetics:</b>	8q24.13
<b>Domains:</b>	pkinase, S_TKc
<b>Protein Families:</b>	Druggable Genome, Protein Kinase
<b>MW:</b>	41 kDa
<b>Gene Summary:</b>	Adapter protein involved in protein degradation by interacting with COP1 ubiquitin ligase (PubMed:27041596). The COP1-binding motif is masked by autoinhibitory interactions with the protein kinase domain (PubMed:26455797). Serves to alter COP1 substrate specificity by directing the activity of COP1 toward CEBPA (PubMed:27041596). Binds selectively the recognition sequence of CEBPA (PubMed:26455797). Regulates myeloid cell differentiation by altering the expression of CEBPA in a COP1-dependent manner (By similarity). Controls macrophage, eosinophil and neutrophil differentiation via the COP1-binding domain (By similarity). Interacts with MAPK kinases and regulates activation of MAP kinases, but has no kinase activity (PubMed:15299019, PubMed:26455797).[UniProtKB/Swiss-Prot Function]

Product images:



Circular map for RC209219L1



Double digestion of RC209219L1 using SgfI and MluI