

Product datasheet for **RC209214**

TMEM117 (NM_032256) Human Tagged ORF Clone

Product data:

Product Type:	Expression Plasmids
Product Name:	TMEM117 (NM_032256) Human Tagged ORF Clone
Tag:	Myc-DDK
Symbol:	TMEM117
Mammalian Cell Selection:	Neomycin
Vector:	pCMV6-Entry (PS100001)
E. coli Selection:	Kanamycin (25 ug/mL)



[View online »](#)

ORF Nucleotide Sequence:

>RC209214 ORF sequence
Red=Cloning site **Blue**=ORF **Green**=Tags(s)

TTTTGTAATACGACTCACTATAGGGCGGCCGGAATTCGTCGACTGGATCCGGTACCGAGGAGATCTGCC
 GCC**CGGATCGCC**

ATGGGTAAAGACTTTCGTTACTATTTCCAGCATCCCTGGTCTCGCATGATTGTGGCTTACTTGGTATCT
 TCTTTAACTTCTTAATATTTGCGGAGGACCCAGTTTCTCATAGCCAAACAGAAGCCAATGTTATTGTTGT
 TGGAAACTGTTTTTCATTTGTTACAAATAAATACCCTAGAGGAGTTGGCTGGAGGATTTTGAAGGTGCTT
 CTATGGCTACTTGCCATTCTCACAGGACTAATAGCTGGCAAATTTCTGTTCCATCAGCGTTTGTGGTCT
 AGTTGCTCCGATTAATAATGTTTCGAGAAGATCATGGGTCGTGGATGACAATGTTCTTCAGCACAATTCT
 CTTTCTTTCATATTTTCTCACATATAACAACACGATTCTTCTAATGGATGGGAACATGGGAGCATATATC
 ATTACAGACTATATGGGCATCCGAAATGAAAGTTTCATGAAATTAGCTGCAGTAGGGACCTGGATGGGG
 ACTTTGTCACAGCTTGGATGGTCACTGATATGATGCTTCAGGACAAACCTATCTGACTGGGAAAATC
 AGCAAGAGCTTTCTGGAAGAAAGGAAATGTTAGGATCACTTTATCTGGACAGTTCTTTTACTCTGACG
 TCTGTGGTTGACTTGTGATTACAACGGACTGGATCAGCTGGGACAAGCTGAATCGGGGATTTTGGCCCA
 GTGATGAAGTTCCAGAGCATTCTTGCTTCTTTATCTTGGTCTTTGACCTTCTATTGTGATGCAGGA
 CTGGGAATCCCACATTTTCATGGGAGATGTTGATGTAATCTCCCTGTTTGCACACCCCTCACATGCAG
 TTCAAGATTCCTTTCTCCAGAAAATCTTCAAGGAGGAATATCGTATTCATAACAGGCAAATGTTTAA
 ACTATGGAATTATCTTCTCGTCTTGATTTTGGATCTTAATATGTGGAAGAACCAATATTTTATAAACC
 TCATGAATATGGCAATATATCGGCCCGGGCAGAAGATATACAGTGAAGACTCAGAAAAGTTTAAAA
 GATTTGAACAGAACCAAGCTATCTGGGAATGGAGTCCAATCACACTAACCCCTCGGACTAATAAAACAT
 ATGTTGAGGGAGACATGTTCTTACACAGCAGTTTCATAGGAGCAGTCTGATGTCAAGTGTCTGGCCTT
 TGTTCCAAGCCTGATAGCCTTTGTGTGGTTGGATTCTTTATTTGGTTCTTTGGACGATTTTGA AAAAT
 GAGCCACGCATGGAGAATCAAGCAAAACTTACACTCGCATGAAAAGAAAATCTCCATCAGAACATAGCA
 AAGACATGGGAATCACTCGAGAAAACCCAGGCTTCAGTAGAAGACCCCTTGAATGACCCTTCTTGGT
 TTGCATCAGGTCTGACTTCAATGAGATCGTCTACAAGTCTCCACCTAACCTCGAAAACCTTGAGCTCA
 CAGTTGAACGAATCTACTAGTGAACAGAAGCTGATCAAGACCAACGACTTCTAAAAGTACACCTACGA
 AC

ACGCGTACGCGGCCGCTCGAGCAGAAAAC**T**CATCTCAGAAGAGGATCTGGCAGCAAATGATATCTGGATT
 ACAAGGATGACGACGATAAGGTTTAA

Protein Sequence:

>RC209214 protein sequence
Red=Cloning site **Green**=Tags(s)

MGKDFRYFQHPWSRMIVAYLVIFFNFLIFAEDPVSHSQTEANVIVVGNCF SFVTNKYPRGVGWRILKVL
 LWLLAILTGLIAGKFLFHQRLFGQLRLKMFREDHGSWMTMFFSTILFLFIFSHIYNTILLMDGNMGAYI
 ITDYMGIRNESFMKLAAGVTWMDGFVTAWMVTDMMMLQDKPYPDWGKSARAFWKKGNVRITLFWTVLFTLT
 SVVVLVITTDWISWDKLNRFPSDEVSRAFLASFILVFDLLIVMQDWEFPHFMGDVDVNLPLGLHPTPHMQ
 FKIPPFQKIFKEEYRIHITGKWFNYGIIFLVLILDNLNWKNIIFYKPHEYGQYIGPGQKIYVKDSESLK
 DLNRTKLSWEWRSNHTNPRNTKYVEGDMFLHSRFIGASLDVKCLAFVPSLIAFVWFVFFIWFVGRFLKN
 EPRMENQDKTYTRMKRSPSEHSKDMGITRENTQASVEDPLNDPSLVCI RSDFNIEIVYKSSHLTSENLS
 QLNESTSATEADQDPTTSKSTPTN

TRTRPLEQK**L**ISEEDLAANDILDYKDDDDK**V**

Chromatograms:

https://cdn.origene.com/chromatograms/mk6224_h03.zip

Restriction Sites:

Sgfl-MluI

Cloning Scheme:


ACCN: NM_032256

ORF Size: 1542 bp

OTI Disclaimer: The molecular sequence of this clone aligns with the gene accession number as a point of reference only. However, individual transcript sequences of the same gene can differ through naturally occurring variations (e.g. polymorphisms), each with its own valid existence. This clone is substantially in agreement with the reference, but a complete review of all prevailing variants is recommended prior to use. [More info](#)

OTI Annotation: This clone was engineered to express the complete ORF with an expression tag. Expression varies depending on the nature of the gene.

Components: The ORF clone is ion-exchange column purified and shipped in a 2D barcoded Matrix tube containing 10ug of transfection-ready, dried plasmid DNA (reconstitute with 100 ul of water).

- Reconstitution Method:**
1. Centrifuge at 5,000xg for 5min.
 2. Carefully open the tube and add 100ul of sterile water to dissolve the DNA.
 3. Close the tube and incubate for 10 minutes at room temperature.
 4. Briefly vortex the tube and then do a quick spin (less than 5000xg) to concentrate the liquid at the bottom.
 5. Store the suspended plasmid at -20°C. The DNA is stable for at least one year from date of shipping when stored at -20°C.

RefSeq: [NM_032256.3](#)

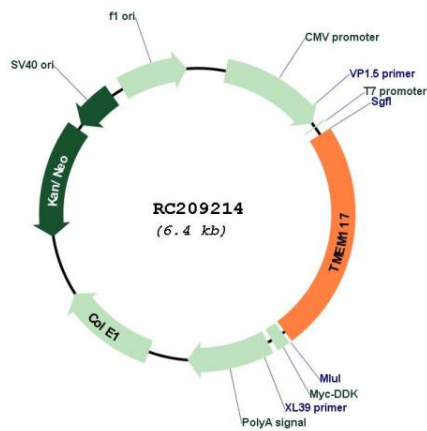
RefSeq Size: 3004 bp

RefSeq ORF: 1545 bp

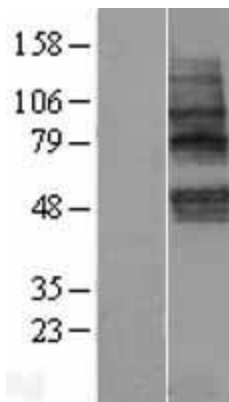
Locus ID: 84216

UniProt ID: [Q9H0C3](#)

Cytogenetics: 12q12
Protein Families: Transmembrane
MW: 60.2 kDa
Gene Summary: Involved in endoplasmic reticulum (ER) stress-induced cell death pathway.[UniProtKB/Swiss-Prot Function]

Product images:


Circular map for RC209214



Western blot validation of overexpression lysate (Cat# [LY410268]) using anti-DDK antibody (Cat# [TA50011-100]). Left: Cell lysates from untransfected HEK293T cells; Right: Cell lysates from HEK293T cells transfected with RC209214 using transfection reagent MegaTran 2.0 (Cat# [TT210002]).