

Product datasheet for **RC209206**

WNT5A (NM_003392) Human Tagged ORF Clone

Product data:

Product Type:	Expression Plasmids
Product Name:	WNT5A (NM_003392) Human Tagged ORF Clone
Tag:	Myc-DDK
Symbol:	WNT5A
Synonyms:	hWNT5A
Vector:	pCMV6-Entry (PS100001)
E. coli Selection:	Kanamycin (25 ug/mL)
Cell Selection:	Neomycin
ORF Nucleotide Sequence:	>RC209206 ORF sequence Red=Cloning site Blue=ORF Green=Tags(s)

TTTTGTAATACGACTCACTATAGGGCGCCGGAATTCGTCGACTGGATCCGGTACCGAGGAGATCTGCC
GCC**CGGATCGC**C

ATGAAGAAGTCCATTGGAATATTAAGCCCAGGAGTTGCTTTGGGGATGGCTGGAAGTGAATGTCTTCCA
AGTTCTTCTAGTGGCTTTGGCCATATTTTTCTCCTTCGCCAGGTTGTAATTGAAGCCAATTCTTGGTG
GTCGCTAGGTATGAATAACCCTGTTTCAGATGTCAGAAGTATATATTATAGGAGCACAGCCTCTGTCAGC
CAACTGGCAGGACTTTCTCAAGGACAGAAGAACTGTGCCACTTGATACGAGACCACATGCAGTACATCG
GAGAAGGCGCGAAGACAGGCATCAAGAATGCCAGTATCAATCCGACATCGAAGGTGGAAGTGCAGCAC
TGTGGATAACACCTCTGTTTTGGCAGGGTGATGCAGATAGGCAGCCGCGAGACGGCCTTACATACGCG
GTGAGCGCAGCAGGGGTGGTGAACGCCATGAGCCGGGCGTGCCGCGAGGGCGAGCTGTCCACCTGCGGCT
GCAGCCGCGCGCGCCCAAGGACCTGCCGCGGACTGGCTCTGGGGCGGCTGCGGCGACAACATCGA
CTATGGCTACCGCTTTGCCAAGGAGTTCGTGGACGCCCGCGAGCGGGAGCGCATCCACGCCAAGGGCTCC
TACGAGAGTGCTCGCATCCTCATGAACCTGCACAACAACGAGGCCGCGCAGGACGGTGTACAACCTGG
CTGATGTGGCCTGCAAGTGCCATGGGGTGTCCGGCTCATGTAGCCTGAAGACATGCTGGTGCAGTGGC
AGACTTCCGCAAGGTGGTGATGCCCTGAAGGAGAAGTACGACAGCGCGCGGCCATGCGGCTCAACAGC
CGGGGCAAGTTGGTACAGGTCAACAGCCGCTTCAACTCGCCACACACAAGACCTGGTCTACATCGACC
CCAGCCCTGACTACTGCGTGCAGTGCAGTGCAGTGCAGTGCAGTGCAGTGCAGTGCAGTGCAGTGCAGT
GACGTGCGAGGGCATGGATGGCTGCGAGCTCATGTGCTGCGGCGTGGCTACGACCAGTTCAAGACCGTG
CAGACGGAGCGCTGCCACTGCAAGTTCCTACTGGTGTGCTACGTCAAGTGAAGAAGTGCACGGAGATCG
TGGACCAGTTGTGTGCAAG

ACGCGTACGCGGCCGCTCGAGCAGAACTCATCTCAGAAGAGGATCTGGCAGCAAATGATATCCTGGATT
ACAAGGATGACGACGATAAGGTTTAA



[View online »](#)

Protein Sequence: >RC209206 protein sequence
Red=Cloning site Green=Tags(s)

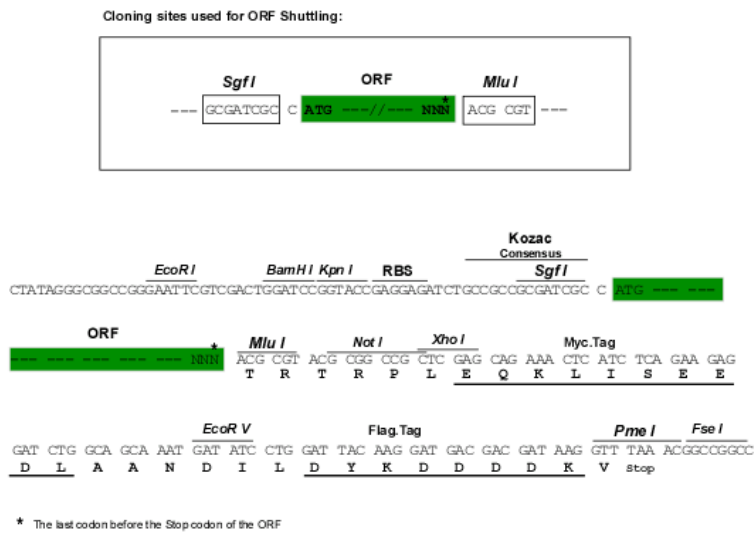
MKKSIGILSPGVALGMAGSAMSSKFFLVALAIFFSFAQVVEANSWWSLGMNPNVQMSEVYIIGAQLCS
 QLAGLSQGQKKLCHLYQDHMQYIGEGAKTGIKECQYQFRHRRWNCSTVDNTSVFGRVMQIGSRETAFTYA
 VSAAGVNVNMSRACREGELSTCGCSRAARPKDLPRDWLWGGCGDNIDYGYRFAKEFVDARERERIHAKGS
 YESARILMNLHNNEAGRRTVYNLADVACKCHGVSGSCLKTCWLQLADFRKVGDLKKEKYDSAAAMRLNS
 RGKLVQVNSRFNSPTTQDLVYIDPSPDYCVRNESTGSLGTQGRCLKNKTSEGMDGCCELCCGGRGYDQFKTV
 QTERCHCKFWCCYVCKKCTEIVDQFVCK

TRTRPLEQKLISEEDLAANDILDYKDDDDKV

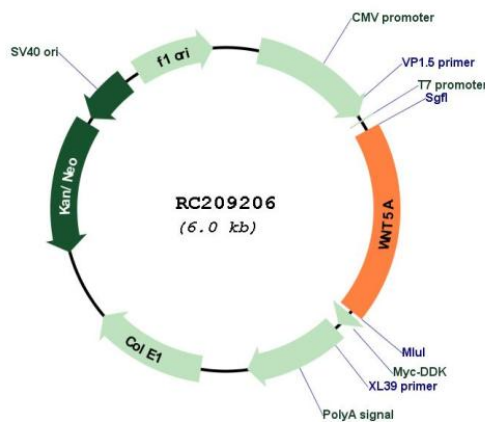
Chromatograms: https://cdn.origene.com/chromatograms/mk6126_c06.zip

Restriction Sites: SgfI-MluI

Cloning Scheme:



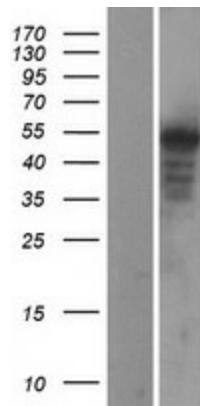
Plasmid Map:



ACCN:	NM_003392
ORF Size:	1140 bp
OTI Disclaimer:	The molecular sequence of this clone aligns with the gene accession number as a point of reference only. However, individual transcript sequences of the same gene can differ through naturally occurring variations (e.g. polymorphisms), each with its own valid existence. This clone is substantially in agreement with the reference, but a complete review of all prevailing variants is recommended prior to use. More info
OTI Annotation:	This clone was engineered to express the complete ORF with an expression tag. Expression varies depending on the nature of the gene.
Components:	The ORF clone is ion-exchange column purified and shipped in a 2D barcoded Matrix tube containing 10ug of transfection-ready, dried plasmid DNA (reconstitute with 100 ul of water).
Reconstitution Method:	<ol style="list-style-type: none">1. Centrifuge at 5,000xg for 5min.2. Carefully open the tube and add 100ul of sterile water to dissolve the DNA.3. Close the tube and incubate for 10 minutes at room temperature.4. Briefly vortex the tube and then do a quick spin (less than 5000xg) to concentrate the liquid at the bottom.5. Store the suspended plasmid at -20°C. The DNA is stable for at least one year from date of shipping when stored at -20°C.
RefSeq:	NM_003392.7
RefSeq Size:	6194 bp
RefSeq ORF:	1143 bp
Locus ID:	7474
UniProt ID:	P41221
Cytogenetics:	3p14.3
Domains:	wnt
Protein Families:	Adult stem cells, Cancer stem cells, Druggable Genome, ES Cell Differentiation/IPS, Secreted Protein, Stem cell relevant signaling - Wnt Signaling pathway
Protein Pathways:	Basal cell carcinoma, Hedgehog signaling pathway, Melanogenesis, Pathways in cancer, Wnt signaling pathway
MW:	42.3 kDa

Gene Summary:

The WNT gene family consists of structurally related genes which encode secreted signaling proteins. These proteins have been implicated in oncogenesis and in several developmental processes, including regulation of cell fate and patterning during embryogenesis. This gene encodes a member of the WNT family that signals through both the canonical and non-canonical WNT pathways. This protein is a ligand for the seven transmembrane receptor frizzled-5 and the tyrosine kinase orphan receptor 2. This protein plays an essential role in regulating developmental pathways during embryogenesis. This protein may also play a role in oncogenesis. Mutations in this gene are the cause of autosomal dominant Robinow syndrome. Alternate splicing results in multiple transcript variants. [provided by RefSeq, Jan 2012]

Product images:


Western blot validation of overexpression lysate (Cat# [LY401155]) using anti-DDK antibody (Cat# [TA50011-100]). Left: Cell lysates from untransfected HEK293T cells; Right: Cell lysates from HEK293T cells transfected with RC209206 using transfection reagent MegaTran 2.0 (Cat# [TT210002]).



Coomassie blue staining of purified WNT5A protein (Cat# [TP309206]). The protein was produced from HEK293T cells transfected with WNT5A cDNA clone (Cat# RC209206) using MegaTran 2.0 (Cat# [TT210002]).