

## Product datasheet for **RC209194**

### **FKLF / KLF11 (KLF11) (NM\_003597) Human Tagged ORF Clone**

#### **Product data:**

<b>Product Type:</b>	Expression Plasmids
<b>Product Name:</b>	FKLF / KLF11 (KLF11) (NM_003597) Human Tagged ORF Clone
<b>Tag:</b>	Myc-DDK
<b>Symbol:</b>	FKLF / KLF11
<b>Synonyms:</b>	FKLF; FKLF1; MODY7; TIEG2; Tieg3
<b>Mammalian Cell Selection:</b>	Neomycin
<b>Vector:</b>	pCMV6-Entry (PS100001)
<b>E. coli Selection:</b>	Kanamycin (25 ug/mL)


[View online »](#)

**ORF Nucleotide  
Sequence:**

&gt;RC209194 ORF sequence

Red=Cloning site Blue=ORF Green=Tags(s)

TTTTGTAATACGACTCACTATAGGGCGGCCGGGAATTCGTCGACTGGATCCGGTACCGAGGAGATCTGCC  
GCC**CGCATCGCC**

ATGCACACGCCGGACTTCGCAGGCCAGACGACGCGCGCGCAGTTGACATCATGGACATATGTGAGTCCA  
TCCTGGAGAGGAAGCGGCATGACAGCGAAAGGTCTACTTGCAGCATCTTGGAGCAGACAGACATGGAAGC  
TGTGAGGCTCTTGTGTGATGAGCTCCTGGGGTCAAAGATCCCAGAAAGGTGACCTGTTGCGGATAAGA  
CCCCTCACGCCTGTCTGACTCTGGGGATGTCACACCCTGTGCATATGGATGCAGCCACACCTGAAC  
TACAAAAGACTTCCATTCTTTATCGACTCTGTGCATAACTCTCCTCAGAGCCTGATCTCGTGGAGCC  
ATCGACAAGGACACCTGTTTCTCCCAAGTAACAGATTCCAAAGCATGTACAGCCACGGATGTTCTCCAG  
TCCTCTGCCGTAGTGCCAGAGCTCTGAGCGGGCGCGAGAGGGGCTTGCTGGTGTGGAGCCAGTGC  
CCAGCTCTCCCTGCAGGGCAAGGGGACTAGCGTGATCCGACACACTGGGGAGAGCCTGCTGCCTGCTT  
TCCCACATCCAGACTCCAGATTGCCGGCTTTCTGACAGCAGAGAAGGAGAAGAGCAGCTTCTGGGACAC  
TTTGAAACTTTCAGGACACACCTCACGGACAGTTTACTCAGCACTAACTTGGTGTCTGTCAGCCCT  
GCTTGCACAAGTCTGGTGGCTGTGCTCACTGACAAAGGCCAGCAGGCAGGGTGGCTGGTGCAGTTCA  
GACTTGCTCACCAAAGATTATGAAAATGACCTGCCAGGAAAACCACCCCTCTGATTTCTGTCTGTGTC  
CCTGCTCCCCCTGTCTTGCCAGATGATCCCTGTGACTGGACAAAGTAGCATGTTACCAGCTTTTTTGA  
AGCCCCCTCCCAGTGTCTGTGGGGACTGTGAGACCCATCTAGCTCAGGCTGTCCAGCGCCTCAACC  
TGTGTTTGTGGACCTGTCTGCTCAGGGAGCTGTGATGTTGGTCTGCCCCAGGGAGCCCTCCCTCCG  
CCTGCCCCCTGTGCAGCAATGTATGGCTGCCGGAAACCAAGTTGTTGCCCTTGCCCTGATGTTCCAG  
TGTTTATCACCTAGCCAAAAGTGTGCTCCTCAGGTAGACTTTCCCGAAGGAGGAACTATGTTTGCAG  
CTTCCCAGGTTGCGGAAGACTACTTCAAAGTTCCCACCTTAAGGCCATCTTCGCACACTCACAGGG  
GAGAAGCCTTTCAACTGCAGCTGGGATGGCTGTGATAAAAAGTTTGCTCGTTCGGATGAGCTGTACGCC  
ACCGCAGAACTCACACAGGGGAGAAGAAGTTTGTGTGCCCGGTGTGTACCGACGTTTCATGCGCAGTGA  
CCACCTGACGAAGCATGCCCGGCCACATGACGACCAAGAAGATCCCAGGCTGGCAGGCAGAGGTTGGC  
AAGCTGAACAGAATCGCTCTGCAGAGAGCCGGGAGCCACTGGTGTGAGCATGCCAGCCTCTGCC

AC**CGCT**ACCGGGCCGCTCGAGCAGAAACTCATCTCAGAAGAGGATCTGGCAGCAATGATATCCTGGATT  
ACAAGGATGACGACGATAAGGTTTAA

**Protein Sequence:**

&gt;RC209194 protein sequence

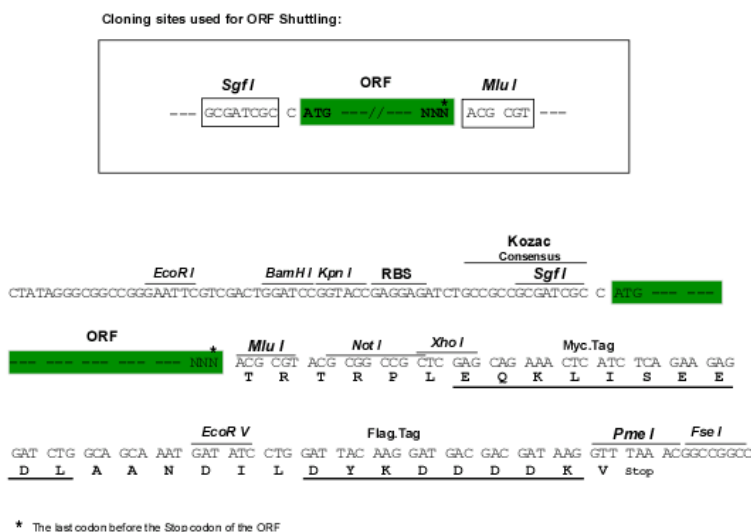
Red=Cloning site Green=Tags(s)

MHTPDFAGPDDARAVIDIMDICESILERKRHDSERSTCSILEQTDMEAVEALVCMSSWGQRSQKGDLLRIR  
PLTPVSDSGDVTTTVMDAATPELPKDFHSLSTLCITPPQSPDLVEPSTRTPVSPQVTDKACTATDVLQ  
SSAVVARALSGAERGLLGLPEVPPSPCRAKGTSVIRHTGESPAACFPTIQTPDCRLSDSREGEEQLLGH  
FETLQDTHLTDSELLSTNLVSCQPCLHKSGLLLTDKGQQAAGWPGAVQTCSPKNYENDLPRKTTPLISVSV  
PAPPVLCQMIPVTGQSSMLPAFLKPPPQLSVGTVRPILAQAAPAPQPVFVGPVAVPQAVMLVLPQGALPP  
PAPCAANVMAAGNTKLLPLAPAPVFITSSQNCVPQVDFSRRRNYVCSFPGRKTYFKSSHKAHLRTHTG  
EKPFNCSDWDCDKKFARSDEL SRHRRHTGEEKFVCPVCDRRFMRSDHL TKHARRHMTTKKIPGWQAQEVG  
KLNRIASAEPSGPLVMPASA

TR**TRPLEQKLI**SEEDLAANDILDYKDDDDK**V****Chromatograms:**[https://cdn.origene.com/chromatograms/mk6236\\_b08.zip](https://cdn.origene.com/chromatograms/mk6236_b08.zip)**Restriction Sites:**

SgfI-MluI

Cloning Scheme:



**ACCN:** NM\_003597

**ORF Size:** 1536 bp

**OTI Disclaimer:** The molecular sequence of this clone aligns with the gene accession number as a point of reference only. However, individual transcript sequences of the same gene can differ through naturally occurring variations (e.g. polymorphisms), each with its own valid existence. This clone is substantially in agreement with the reference, but a complete review of all prevailing variants is recommended prior to use. [More info](#)

**OTI Annotation:** This clone was engineered to express the complete ORF with an expression tag. Expression varies depending on the nature of the gene.

**Components:** The ORF clone is ion-exchange column purified and shipped in a 2D barcoded Matrix tube containing 10ug of transfection-ready, dried plasmid DNA (reconstitute with 100 ul of water).

**Reconstitution Method:**

1. Centrifuge at 5,000xg for 5min.
2. Carefully open the tube and add 100ul of sterile water to dissolve the DNA.
3. Close the tube and incubate for 10 minutes at room temperature.
4. Briefly vortex the tube and then do a quick spin (less than 5000xg) to concentrate the liquid at the bottom.
5. Store the suspended plasmid at -20°C. The DNA is stable for at least one year from date of shipping when stored at -20°C.

**RefSeq:** [NM\\_003597.4, NP\\_003588.1](#)

**RefSeq Size:** 4051 bp

**RefSeq ORF:** 1539 bp

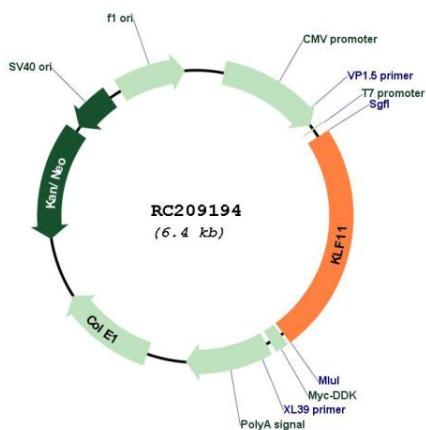
**Locus ID:** 8462

**UniProt ID:** [O14901](#)

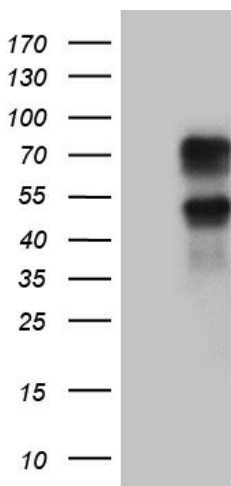
**Cytogenetics:** 2p25.1

**Domains:** zf-C2H2  
**Protein Families:** Transcription Factors  
**MW:** 55.1 kDa  
**Gene Summary:** The protein encoded by this gene is a zinc finger transcription factor that binds to SP1-like sequences in epsilon- and gamma-globin gene promoters. This binding inhibits cell growth and causes apoptosis. Defects in this gene are a cause of maturity-onset diabetes of the young type 7 (MODY7). Three transcript variants encoding two different isoforms have been found for this gene. [provided by RefSeq, Apr 2010]

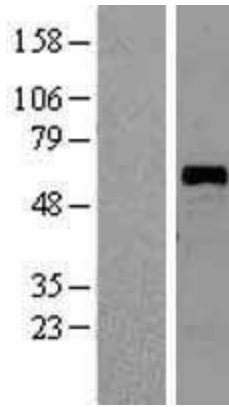
**Product images:**



Circular map for RC209194



HEK293T cells were transfected with the pCMV6-ENTRY control (Cat# [PS100001], Left lane) or pCMV6-ENTRY KLF11 (Cat# RC209194, Right lane) cDNA for 48 hrs and lysed. Equivalent amounts of cell lysates (5 ug per lane) were separated by SDS-PAGE and immunoblotted with anti-KLF11 (Cat# [TA811001])(1:2000). Positive lysates [LY418566] (100ug) and [LC418566] (20ug) can be purchased separately from OriGene.



Western blot validation of overexpression lysate (Cat# [LY418566]) using anti-DDK antibody (Cat# [TA50011-100]). Left: Cell lysates from untransfected HEK293T cells; Right: Cell lysates from HEK293T cells transfected with RC209194 using transfection reagent MegaTran 2.0 (Cat# [TT210002]).