

Product datasheet for RC209181

C18orf22 (RBFA) (NM_024805) Human Tagged ORF Clone

Product data:

Product Type:	Expression Plasmids
Product Name:	C18orf22 (RBFA) (NM_024805) Human Tagged ORF Clone
Tag:	Myc-DDK
Symbol:	C18orf22
Synonyms:	C18orf22; HsT169
Mammalian Cell Selection:	Neomycin
Vector:	pCMV6-Entry (PS100001)
E. coli Selection:	Kanamycin (25 ug/mL)
ORF Nucleotide Sequence:	>RC209181 representing NM_024805 Red=Cloning site Blue=ORF Green=Tags(s)

TTTTGTAATACGACTCACTATAGGGCGGCCGGGAATTCGTCGACTGGATCCGGTACCGAGGAGATCTGCCGCCGCGATCGCC

ATGTGGGCTGCGGCGGGCGGGTGTGGCGCTCCCGCGGGTCTCCGGCCCTGTTCCGTAGCCGCGATGCTGCGCTATTTCCAGGCTGCGAGCGGGACTTCACTGCTGCTGTCTCCTGCAAGAACTGGCTCAAGAAATTTGCCTCGAAAACAAAAAAGTTTGGTATGAAAGTCCTTCTGGTTCTACTCGACTTACAAACCATCCAAGTTGGAATTCCTCATGAGGAGCACCTCAAAGAAAACCAGGAAGGAAGACCATGCGCGCCTGAGGGCCCTGAACGGCCTCCTCTATAAGGCACTGACAGACCTGCTGTGTACCCTGAAGTGAGTCAGGAGCTGTATGACCTTAACGTGGAGCTCTCCAAGTTTCCCTGACTCCAGACTTCTCAGCCTGCCGAGCGTACTGGAAGACAACGCTCTCTGCTGAGCAGAACGCACACATGGAGGCTGTCTGCAGAGAAGTGCCGCGCACATGAGGCACCTTTGATGTCCCAGCAGACCCTGAGGAATGTGCCACCGATAGTGTTTGTTCAAGACAAGGGAAATGCAGCTCTAGCTGAGCTTGATCAGTTACTGGCAGTCGCAGACTTTGGACCCCGGGATGAAAAGAGACAACTTTGTACAAAATGATTTCAAGGACCTGATGCCCCACAACCTGCGGCACCACAGAGCCGACCACAAGCTCCAGTCTGTGTGGGATCGATCATGAGGCGCTCAACAAGCAGATTATGGAGTACAAAAGGAGGAAAGATAAGGGCTCGGGGCGCTGGTGTGGCAGGGGAGGTGGCTGAGCTGACAACGCAGATGAAAAGGGAAGGAAGAGGGCCAAGCCCCGCTGGAGCAGGACAGCTCCCTCAAGAGTTACCTGTCAGGCGAGGAGTTGAAGATGACCTGGACCTGGTTGGTGCCTCGGAGTACGAATGCTATGCCCCGACACAGAGGAGTTGGAGGCAGAGAGAGGAGGTGGCAGAACAGAGGATGGCCACAGCTGCGGAGCAAGCAGGGAG

ACGCGTACGCGGCCGCTCGAGCAGAACTCATCTCAGAAGAGGATCTGGCAGCAAATGATATCCTGGATTACAAGGATGACGACGATAAGGTTTAA



[View online »](#)

Protein Sequence: >RC209181 representing NM_024805
Red=Cloning site Green=Tags(s)

MWAAAGGLWRSRAGLRALFRSRDAALFPGCERGLHCSAVSCKNWLKFFASKTKKKVWYESP SLGSHSTYK
 PSKLEFLMRSTSKKTRKEDHARLRALNGLLYKALTDLLCTPEVSQELYDLNVELSKVSLTPDF SACRAYW
 KTTLSAEQNAHMEAVLQRSAAHMRHLLMSQOTLRNVPPIV FVQDKGNAALAE L DQLLAVADFGPRDERDN
 FVQNDFRDPDAPQPCGTTEPTTSSSLCGIDHEALNKQIMEYKRRKDKLGG L VWQGV AELTTQMKKGRK
 RAKPRLEQDSSLKSYLSGEEVEDDLVLVGAPEYECYAPDTEELEAERGGGRTEDGHSCGASRE

TRTRPLEQKLISEEDLAANDILDYKDDDDKV

Chromatograms: https://cdn.origene.com/chromatograms/ja1552_g07.zip

Restriction Sites: SgfI-MluI

Cloning Scheme:



ACCN: NM_024805

ORF Size: 1029 bp

OTI Disclaimer: The molecular sequence of this clone aligns with the gene accession number as a point of reference only. However, individual transcript sequences of the same gene can differ through naturally occurring variations (e.g. polymorphisms), each with its own valid existence. This clone is substantially in agreement with the reference, but a complete review of all prevailing variants is recommended prior to use. [More info](#)

OTI Annotation: This clone was engineered to express the complete ORF with an expression tag. Expression varies depending on the nature of the gene.

Components: The ORF clone is ion-exchange column purified and shipped in a 2D barcoded Matrix tube containing 10ug of transfection-ready, dried plasmid DNA (reconstitute with 100 ul of water).

Reconstitution Method:

1. Centrifuge at 5,000xg for 5min.
2. Carefully open the tube and add 100ul of sterile water to dissolve the DNA.
3. Close the tube and incubate for 10 minutes at room temperature.
4. Briefly vortex the tube and then do a quick spin (less than 5000xg) to concentrate the liquid at the bottom.
5. Store the suspended plasmid at -20°C. The DNA is stable for at least one year from date of shipping when stored at -20°C.

RefSeq: [NM_024805.3](#)

RefSeq Size: 1419 bp

RefSeq ORF: 1032 bp

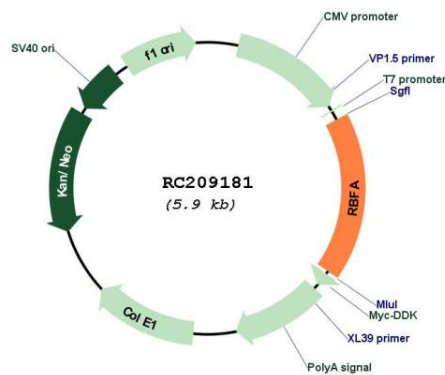
Locus ID: 79863

UniProt ID: [Q8N0V3](#)

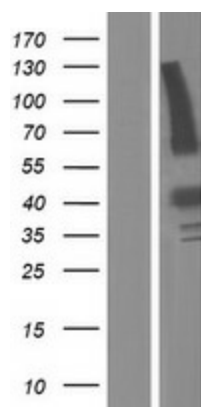
Cytogenetics: 18q23

MW: 38.2 kDa

Product images:



Circular map for RC209181



Western blot validation of overexpression lysate (Cat# [LY411060]) using anti-DDK antibody (Cat# [TA50011-100]). Left: Cell lysates from untransfected HEK293T cells; Right: Cell lysates from HEK293T cells transfected with RC209181 using transfection reagent MegaTran 2.0 (Cat# [TT210002]).