

## Product datasheet for RC209180

### TMEM154 (NM\_152680) Human Tagged ORF Clone

#### Product data:

Product Type: Expression Plasmids  
Product Name: TMEM154 (NM\_152680) Human Tagged ORF Clone  
Tag: Myc-DDK  
Symbol: TMEM154  
Mammalian Cell Selection: Neomycin  
Vector: pCMV6-Entry (PS100001)  
E. coli Selection: Kanamycin (25 ug/mL)  
ORF Nucleotide Sequence: >RC209180 representing NM\_152680  
Red=Cloning site Blue=ORF Green=Tags(s)

TTTTGTAATACGACTCACTATAGGGCGGCCGGAATTCGTCGACTGGATCCGGTACCGAGGAGATCTGCC  
GCCCGATCGCC

ATGCAGGCTCCCCGCGCAGCCCTAGTCTTCGCCCTGGTGATCGCGCTCGTCCCGTCGGCCGGGTAATT  
ATGAGGAATTAGAAAACCTCAGGAGATACAACCTGTGGAATCTGAAAGACCAATAAAGTGACTATTC  
CACATTTGCTGCAGTGACCATCAAAGAACATTAATGCAAAATAAATCTACCAACTTTGCTCCGGAT  
GAAAATCAGTTAGAGTTTATACTGATGGTGTAAATCCCATTGATTTTATGGTCTCTTACTTTTATT  
TGGTATTCCTTGCAACATACTATAAAAGAAAAGAAGAACTAAACAAGAACCTCTAGCCAAGGATCTCAGAG  
TGCTTTACAGACATATGAACTGGGAAGTAAAAGCTGAAAAGTCCCTATTTTGGAGGAAGATACACCTCT  
GTTATGGAAATTGAAATGGAAGAGCTTGATAAATGGATGAACAGCATGAATAGAAATGCCGACTTTGAAT  
GTTTACCTACCTGAAGGAAGAGAAGGAATCAAATCACACCCAAGTGACAGTGAATCC

ACGCGTACGCGGCCGCTCGAGCAGAACTCATCTCAGAAGAGGATCTGGCAGCAATGATATCCTGGATT  
ACAAGGATGACGACGATAAGGTTTAA

Protein Sequence: >RC209180 representing NM\_152680  
Red=Cloning site Green=Tags(s)

MQAPRAALVFALVIALVPVGRGNYEELNSGDTTVESERPKNVTPSTFAAVTIKETLNANINSTNFAPD  
ENQLEFILMVL IPLILLVLLLLFVVFLATYYKRKRKQEPSSQGSQSALQTYELGSENVKVI FEEDTPS  
VMEIEMEELDKWMNSMNRNADFELPTLKEEKESNHNPSDSES

TRTRPLEQKLISEEDLAANDILDYKDDDDKV

Chromatograms: [https://cdn.origene.com/chromatograms/mg3593\\_h10.zip](https://cdn.origene.com/chromatograms/mg3593_h10.zip)

Restriction Sites: Sgfl-MluI



[View online >](#)

**Cloning Scheme:**


**ACCN:** NM\_152680

**ORF Size:** 549 bp

**OTI Disclaimer:** Due to the inherent nature of this plasmid, standard methods to replicate additional amounts of DNA in E. coli are highly likely to result in mutations and/or rearrangements. Therefore, OriGene does not guarantee the capability to replicate this plasmid DNA. Additional amounts of DNA can be purchased from OriGene with batch-specific, full-sequence verification at a reduced cost. Please contact our customer care team at [custsupport@origene.com](mailto:custsupport@origene.com) or by calling 301.340.3188 option 3 for pricing and delivery.

The molecular sequence of this clone aligns with the gene accession number as a point of reference only. However, individual transcript sequences of the same gene can differ through naturally occurring variations (e.g. polymorphisms), each with its own valid existence. This clone is substantially in agreement with the reference, but a complete review of all prevailing variants is recommended prior to use. [More info](#)

**OTI Annotation:** This clone was engineered to express the complete ORF with an expression tag. Expression varies depending on the nature of the gene.

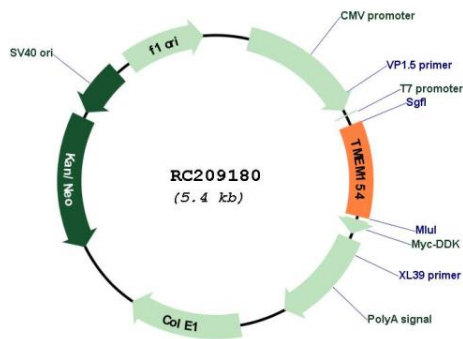
**Components:** The ORF clone is ion-exchange column purified and shipped in a 2D barcoded Matrix tube containing 10ug of transfection-ready, dried plasmid DNA (reconstitute with 100 ul of water).

**Reconstitution Method:**

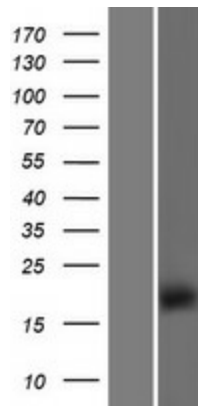
1. Centrifuge at 5,000xg for 5min.
2. Carefully open the tube and add 100ul of sterile water to dissolve the DNA.
3. Close the tube and incubate for 10 minutes at room temperature.
4. Briefly vortex the tube and then do a quick spin (less than 5000xg) to concentrate the liquid at the bottom.
5. Store the suspended plasmid at -20°C. The DNA is stable for at least one year from date of shipping when stored at -20°C.

**RefSeq:** [NM\\_152680.3](#)

RefSeq Size: 3085 bp  
 RefSeq ORF: 552 bp  
 Locus ID: 201799  
 UniProt ID: [Q6P9G4](#)  
 Cytogenetics: 4q31.3  
 Protein Families: Transmembrane  
 MW: 20.3 kDa

**Product images:**


Circular map for RC209180



Western blot validation of overexpression lysate (Cat# [LY407358]) using anti-DDK antibody (Cat# [TA50011-100]). Left: Cell lysates from untransfected HEK293T cells; Right: Cell lysates from HEK293T cells transfected with RC209180 using transfection reagent MegaTran 2.0 (Cat# [TT210002]).