

Product datasheet for **RC209175**

ZNF529 (NM_020951) Human Tagged ORF Clone

Product data:

Product Type:	Expression Plasmids
Product Name:	ZNF529 (NM_020951) Human Tagged ORF Clone
Tag:	Myc-DDK
Symbol:	ZNF529
Mammalian Cell Selection:	Neomycin
Vector:	pCMV6-Entry (PS100001)
E. coli Selection:	Kanamycin (25 ug/mL)



[View online »](#)

ORF Nucleotide Sequence:

>RC209175 ORF sequence
 Red=Cloning site Blue=ORF Green=Tags(s)

TTTTGTAATACGACTCACTATAGGGCGGCCGGAATTCGTCGACTGGATCCGGTACCGAGGAGATCTGCC
 GCC**GCGATCGCC**

ATGGACCATGAACTGGTACACTCAGGGATGTGGTCATCAACTTCTCTCAGGAGGAATGGGAATATCTGG
 ATTCTGCTCAGAGGAACCTGTACTGGGATGTGATGATGGAGAACTACAGCAACTTACTCTACTGGATTT
 GGAGTCCAGGAATGAGACTAAGCATTATCTGTAGGAAAAGATATTATCAAACACTGGTCTCAGTGG
 GAGGTAATGAAAAGTAGCAAGTTATGTGGCCTTGAAGGTTCCATTTTCAGAAATGACTGGCAAAGCAAAA
 GCAAGATTGACGTACAAGGACCTGAAGTGGGATATTTCACTCAAATGAAAATCATCTCTGAAAATGTGCC
 CAGTTACAAAACCTCATGAATCTTTACTTTACCTCGGAGAACTCATGACAGTGAGAAGCCCTATGAATAC
 AAGGAATATGAGAAGGCTTCAGTTGTGACTTAGAGTTTGTGATGAATATCAGAAAAACATACTGGTGGAA
 AAAACTATGAATGAATCAATGTTGAAAACCTTTGGGATAGATAACTCCAGTATGTTACAACCTGAATAT
 TCATACTGGTGTGAAACCTTGAATATATGGAATATGGGAATACATGTAGTTTTATAAAGACTTTAAT
 GTATACCAGAAAATTCATAATGAGAAGTCTATAAATGTAAAGGAATACAGAAGGACCTTTGAAAGAGTTG
 GAAAAGTTACTCCACTTCAAAGAGTTTCATGATGGTGAGAAAACACTTTGAATGCTCATTCTGTGGGAATC
 CTTTAGAGTGCATGCACAACCTTACTCGACATCAGAAAAACCATACTGATGAGAAAACCTTACAAATGTATG
 GAATGTGGCAAGGACTTCAGATTTCACTCACAGCTTACCGAACATCAGAGAATTCATACTGGTGAGAAAC
 CCTACAAATGTATGCACTGTGAGAAGGTTTTAGAAATAGTTCACAGCTCATTGAACATCAGAGAATTC
 CACTGGTGAGAAACCTTATGCATGTAAGGAATGTGGGAAGGCTTTGGAGTATGTAGAGAAGTTCCTCGT
 CATCAGAGAATTCATACTGGTAAGAAACCTATGAATGCAAAGCATGTGGAAAGGCTTTAGAAAAGTT
 CATCCCTGACTAGACATCAGAGGATTCATACTGGTGAAAACCTTATAAATGTAAGAAATGTGAGAAAGC
 ATTTGGAGTAGGTAGTGAACCTTACTCGACATGAAAGAATTCACAGTGGTCAAAAACCTTATGAATGTAAG
 GAGTGTGGAAAGTCTTTAGACTTACGTACGCCCTTATCAACATCAAAGAATTCATAGTGGTGAGAAAC
 CTTATGAATGTAAGGTATGTGGGAAGGCTTTAGACATAGTTCAGCCCTTACAGAACATCAGAGAATTC
 TACTGGAGAAAACCTTATGAATGCAAGGCATGTGGGAAGGCTTTAGACATAGTTCATCCTTTACAAA
 CATCAGCGCATTACTGATGATAAACCTTATGAATGTAAAGGAGTGTGGGAATTCCTTTAGTGTGTTG
 GGCATCTTACTTGCCAACCGAAAATTTACTGTTGAGAAATCATTGAC

ACGCGTACGCGGCCGCTCGAGCAGAAACTCATCTCAGAAGAGGATCTGGCAGCAAATGATATCCTGGATT
 ACAAGGATGACGACGATAAGGTTTAA

Protein Sequence:

>RC209175 protein sequence
 Red=Cloning site Green=Tags(s)

MDHELVTLRDVVINFSQEEWEYLDSAQRNLYWDVMMENYSNLLSLDLESRNETKHLVSGKDIIQNTGPQW
 EVMESSKLCGLEGSIFRNDWQSKSKIDVQGPVEVGYFSQMKIISENVPSYKTHESLTLPRRTHDSEKPYEY
 KEYEKVFSCDLEFDEYQKIHTGGKNEYECNQCWKTFGIDNSSMLQLNIHTGVKPKYMEYGNCTCSFYKDFN
 VYQKIHNEKFYKKEYRRTFERVGVKVTPLQRVHDGEEKHFECFSGKSFVHAQLTRHQKIHTDEKTYKCM
 ECGKDFRHSQLEHQRHTGKPYKCMHCEKVFRISQLIEHQRHTGKPYACEKCGKAFGVCRELAR
 HQRHTGKPYECKACGKVFNRSSSLTRHQRHTGKPYKCEKEKAFVGSSELTRHERIHSQKPYECK
 ECGKFFRLTSALIQHQRHTGKPYECKVCGKAFRHSALTEHQRHTGKPYECKACGKAFRHSSTFK
 HQRHTDDKPYECKECGNSFSVVGHLTCQPKIYTGKESFD

TRTRPLEQKLISEEDLAANDILDYKDDDDKV

Chromatograms:

https://cdn.origene.com/chromatograms/mk6346_h08.zip

Restriction Sites:

Sgfl-Mlul

Cloning Scheme:


ACCN: NM_020951

ORF Size: 1593 bp

OTI Disclaimer: The molecular sequence of this clone aligns with the gene accession number as a point of reference only. However, individual transcript sequences of the same gene can differ through naturally occurring variations (e.g. polymorphisms), each with its own valid existence. This clone is substantially in agreement with the reference, but a complete review of all prevailing variants is recommended prior to use. [More info](#)

OTI Annotation: This clone was engineered to express the complete ORF with an expression tag. Expression varies depending on the nature of the gene.

Components: The ORF clone is ion-exchange column purified and shipped in a 2D barcoded Matrix tube containing 10ug of transfection-ready, dried plasmid DNA (reconstitute with 100 ul of water).

- Reconstitution Method:**
1. Centrifuge at 5,000xg for 5min.
 2. Carefully open the tube and add 100ul of sterile water to dissolve the DNA.
 3. Close the tube and incubate for 10 minutes at room temperature.
 4. Briefly vortex the tube and then do a quick spin (less than 5000xg) to concentrate the liquid at the bottom.
 5. Store the suspended plasmid at -20°C. The DNA is stable for at least one year from date of shipping when stored at -20°C.

RefSeq: [NM_020951.3](#)

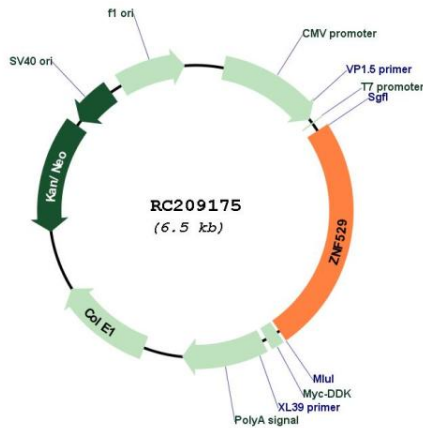
RefSeq Size: 5160 bp

RefSeq ORF: 1692 bp

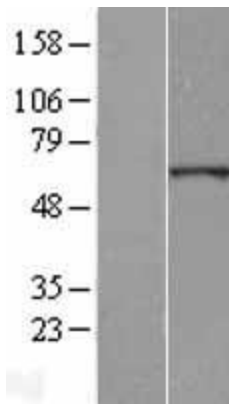
Locus ID: 57711

UniProt ID: [Q6P280](#)

Cytogenetics: 19q13.12
Domains: zf-C2H2
Protein Families: Transcription Factors
MW: 62.2 kDa
Gene Summary: May be involved in transcriptional regulation.[UniProtKB/Swiss-Prot Function]

Product images:


Circular map for RC209175



Western blot validation of overexpression lysate (Cat# [LY412176]) using anti-DDK antibody (Cat# [TA50011-100]). Left: Cell lysates from untransfected HEK293T cells; Right: Cell lysates from HEK293T cells transfected with RC209175 using transfection reagent MegaTran 2.0 (Cat# [TT210002]).