

## Product datasheet for RC209173

### FAM184A (NM\_024581) Human Tagged ORF Clone

#### Product data:

Product Type:	Expression Plasmids
Product Name:	FAM184A (NM_024581) Human Tagged ORF Clone
Tag:	Myc-DDK
Symbol:	FAM184A
Synonyms:	C6orf60
Mammalian Cell Selection:	Neomycin
Vector:	pCMV6-Entry (PS100001)
E. coli Selection:	Kanamycin (25 ug/mL)
ORF Nucleotide Sequence:	>RC209173 ORF sequence Red=Cloning site Blue=ORF Green=Tags(s)

TTTTGTAATACGACTCACTATAGGGCGGCCGGAATTCGTCGACTGGATCCGGTACCGAGGAGATCTGCC  
GCCCGGATCGCC

ATGGACTACAGCCAGGAGATGCACCTGAAATTGAGCAAGAAAAATCGCCAGCTCACCAAGGTAATATATG  
CTTTAAACACTAAAAATGATGAGCATGAATCTGCAATTCAGCCCTCAAAGATGCTCATGAAGAAGAAAT  
TCAACAAATTCCTGCTGAAACAAGAGAAAAATATTGCAGTATAAAAGCAAAGTAACAGAGGAGCTAGAC  
CTTAGAAGAAAGATTCAAGTTTTAGAATCATCATTAGAAGATCACATAAAAAATGAAGCAGCAGGCTTTGA  
CAGAATTTGAAGCTTATAAGCACAGAGTTGAGGACATGCAACTTTGTGCAGAAGCCAGCATGTCCAACG  
CATAGTGACCATGTCTAGAGAAGTCGAAGAGATTAGAAGGAAATTTGAAGAAAAATTACGGAGCTTTGGA  
CAACTTCAAGTACAGTTTAAAAAGACAAACGATTGGCATTGGAAGACTTGAAGCTGCTCACAGACAGG  
AGATACAAGAGCTATTGAAGTCACAGCAGGATCACAGTGCCTCAGTAAATAAAGGCCAGGAAAAGGCAGA  
GGAACACACAGAATGGAGGTGGAGTCCCTAAACAAAATGCTTGAGGAGCTAAGACTTGAACGGAAGAAA  
CTAATTGAGGATTATGAAGGCAAGTTGAATAAAGCTCAGTCCTTTTATGAACGTGAGCTTGATACTTTGA  
AAAGGTCACAGCTTTTTACAGCAGAAAGCCTACAGGCCAGCAAAGAAAAGGAAGCTGATCTTAGAAAAGA  
ATTTCAAGGACAAGAAGCAATTTTACGAAAAACTATAGGAAAATTAAGACAGAGTTACAGATGGTACAG  
GATGAAGCTGGAAGTCTTCTTGACAAATGCCAAAAGCTTCAGACGGCCTTGCCATAGCAGAGAACAATG  
TTCAGGTTCTTCAAAAACAGCTTGATGATGCCAAGGAGGAGAAAATGGCCCTATTAAGCAAGCACAAAGA  
AGTGGAAGTGAAGTGAAGCTAGCAGCTGCCAGAGAACGTTTACAACAGCAAGCTTCAAGTCTTGTCTCAAAGCT  
AGTCATATTGGAATGCTTCAAGCAACTCAAATGACCCAGGAAGTTACAATTAAGATTTAGAATCAGAAA  
AATCGAGAGTCAATGAGAGATTATCTCAACTTGAAGAGGAAAGAGCTTTTTTGCAGAAACAAAACCAAG  
TCTGGATGAAGAGCAGAAGCAACAGATTCTAGAAGTGGAGAAGAAAGTAAATGAAGCAAAGAGAAGTCAAG  
CAAGAATATTATGAAGGGAACCTAAAAACCTGCAAAGTAGATTGGAAGAGGAGGTGACTCAATTAACG  
AGGCCATTCTAAGACTTTGGAAGAATTAGCTTGAAGCACCATATGGCAATTGAAGCTGTCCACAGTAA  
TGCAATTAGGATAAGAAAAACTGCAATGGATTGGAAGAACAACATAACAAAGATAAAGTAACTAACTG



[View online »](#)

GAAGAGGATAAAAATCAGCTTCAACAAGAGCTAGAAAACCTAAAGGAAGTACTGGAAGACAAGTTGAATA  
 CAGCCAATCAAGAGATTGGCCACCTCCAAGATATGGTAAGGAAAAGTGAACAAGTCTTGGCTCTGCAGA  
 AGGACTTATTGCTAGTCTTCAGGACTCCCAGGAAAAGGCTTCAAGATGAGCTTGACTTGACTAAAGACAGC  
 CTAAGGAGACCAAGGATGCTCTATTAATGTGGAGGGTGAAGTGAACAAGAAAAGGCAACAGCATGAAG  
 AAACAATTGCTGCCATGAAAGAAGAAGAGAAGCTCAAAGTGGACAAAATGGCCATGACTTAGAAATTA  
 GTGGACTGAAAATCTTAGACAAGAGTGTCTAACTTCGTGAAGAGTTAAGGCTCAACATGAAGAGGAT  
 AAGAAGTCAGCAATGTCTCAACTTTTGCAGTTGAAAAGATCGAGAGAAAATGCAGCAAGAGATTCATGGC  
 AGAAGAAAAGTAGAAGATCTCTTAAACCAGATTTCTTGCTGAAACAGAATCTGGAGATACAGCTTTCCCA  
 GTCTCAGACTTCTTGTCAACAAGTCAAGCCAGTTTACGCAAGAAGCAGAGCGGTTACGCAAGAGCTT  
 GAAGAATTAGAGGAGCAACATCAGCAAAGACACAAATCATTAAAAGAAGCACATGCTTGCATTTCAAA  
 CTATGGAAGAGGAAAAGGAAAAGGAGCAAAGAGCTCTTAAAAATCATTTACAACAGAAGCATTCTGCAGA  
 GCTTCAATCACTAAAAGATGCACACAGAGAGTCAATGGAGGGCTTCCGGATAGAAATGGAACAGGAACTT  
 CAGACTCTTCGGTTTGAATTAGAAGATGAAGGAAAGGCTATGCTTGCCTTCCGCTCAGAACTCAACC  
 ATCAACATGCAGCTGCAATTGATTTGTTACGGCATAATCATCATCAAGAATTGGCAGCTGCTAAAATGGA  
 ATTAGAGAGAAGCATAGACATCAGCAGAAGACAGAGTAAGGAGCAGATATGTAGAATTACAGATCTACAA  
 GAGGAATTAAGACACAGAGAGCATCACATCTGAATTGGATAAAGGAGGTTGAGCAGCTTCAAGAGATA  
 TAAGTGCCTAACCAAAGAACTGGAATTAAGGGGAAAAGAAATCTCAGAATACGAAGTGAATCTAACCA  
 ACAGATAAGGTTGCATGAACAAGATTTAAACAAGAGACTTAAAAAGAGTTGGATGTGATGACAGCAGAC  
 CACCTCAGAGAGAAAAATATCATGCGGGCAGATTTTAAAGACTAACGAGCTACTCAAGGAAAATAATG  
 CCGCTTACAAGTGTCAATAGAAGAAATGGAAGAAAAATCTAATGAGAGAATCAAACCAAGAAGATAT  
 ACAGATGATTACAGAATTAAGCCATGCTTACAGAAAGAGACCAGATCATAAGAACTAATTGAGGAT  
 AATAAGTTTTATCAGCTGGAATTAGTCAATCGAGAAACTAACTTCAACAAAAGTGTTAACCAAGTCCTA  
 CTGTTGGTGTATTAATCCATTGGCTAAGCAAAAGAAGAAGATGATAAATCAACCAACAAACAGGTTTGT  
 GAGTGTTCCTCAATCTAAGTGTCTGGAATCTGGTGGAGTGGGCAATGGACATCTTAAACCGCTGGATCCC  
 ATTCTAATTCTCCAGTCCACGATATTGAGTTCAACAGCAGCAAACCACTTCCACAGCCAGTGCCACCTA  
 AAGGGCCCAAGACATTTTTGAGTCTGCTCAGAGTGAAGCTTCTCCAGTGGCTTCTCCAGATCCCCAGCG  
 CCAGGAGTGGTTTGCCGGTACTTCACATTC

ACGCGTACGCGGCCGCTCGAGCAGAACTCATCTCAGAAGAGGATCTGGCAGCAATGATATCCTGGATT  
 ACAAGGATGACGACGATAAGGTTTAA

Protein Sequence:

>RC209173 protein sequence  
 Red=Cloning site Green=Tags(s)

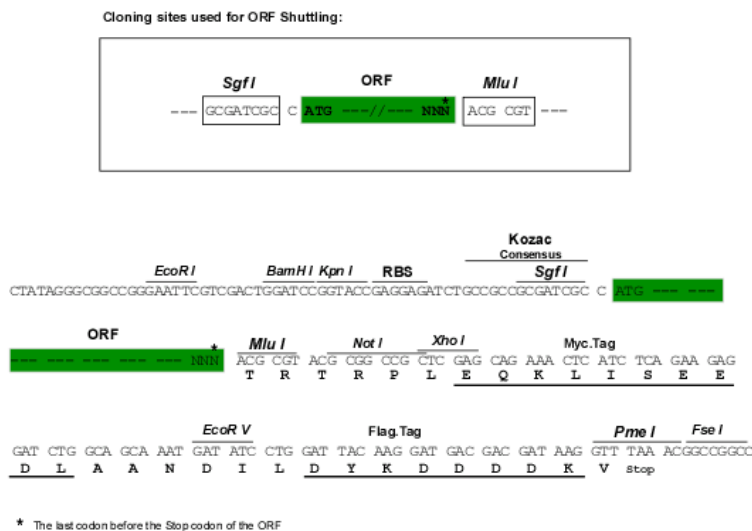
MDYSQEMHLKLSKKIAQLTKVIYALNTKNDEHESAIQALKDAHEEEIQQILAETREKILQYKSKVTEELD  
 LRRKIQVLESSLEDHIKMKQALTEFEAYKHRVEDMQLCAEAQHVQRIVTMSREVEEIRRKFEELKRSFG  
 QLQVQFEKDKRLALEDLQAHRQEIQELLKSQQDHSASVNGQEKAEELHRMEVESLNKMLEELRLERKK  
 LIEDYEGKLNKAQSFYERELDTLKRSQLFTAESLQASKEKEADLRKEFQGQEAIRKTIKGLKTELQMVQ  
 DEAGSLLDKQCQLQALAIENNVQVLQKQLDDAKEGEMALLSKHKEVESELAARERLQQASDLVLKA  
 SHIGMLQATQMTQEVTIKDLSEKSRVNERLSQLEERAFRLRSKTQSLDEEQKQQLILELEKQVNEAKRTQ  
 QEYERELKNLQSRLEEEVTQLNEAHSKTEELAWKHHMAIEAVHSNAIRDKKLQMDLEEQHNKDKLNL  
 EEDKNLQQLQELNKEVLEDKLNANQEIHLQDMVRKSEQGLGSAEGLIASLQDSQERLQNELDLTKDS  
 LKETKDALLNVEGELEQERQQHEETIAAMKEEEKLVDKMAHDLEIKWTENLRQESKLEELRLQHEED  
 KKSAMSQLLQLKDREKNAARDSWQKKVEDLLNQISLLKQNLQSLQSQSQTSLQQLQAQFTQERQRLTQEL  
 EEELEQHQRHKSLEAHVLAFTMEEEKEKEQRALENHLQKHSALQSLKDAHRESMEGFRIEMEQL  
 QTLRFELEDEGKAMLASLRSELNHQAAAIDLRRHNNHQELAAAKMELERSIDISRRQSKHEICRITDLQ  
 EELRHREHHSI SELDKEVQHLHENISALTKLEFKGEILRIRSESNQQIRLHEQDLNKRLEKELDMVTAD  
 HLRKNI MRADFNTNELLKEINAALQVSL EEMEEKYLMRESKPEDIQMITELKAMLTERDQI IKKLI ED  
 NKFYQLELVNRETNFNKVFNSPTVGVINPLAKQKKKNDKSPNTNRFVSPVNL SALES GG VNGHPNRLDP  
 IPNSPVHDI EFNSSKPLPQVPPKPKTFLSPAQSEASPVASPDPRQEFARYFTF

TRTRPLEQKLISEEDLAANDILDYKDDDDKV

Chromatograms: [https://cdn.origene.com/chromatograms/mk6208\\_e06.zip](https://cdn.origene.com/chromatograms/mk6208_e06.zip)

Restriction Sites: SgfI-MluI

Cloning Scheme:



ACCN: NM\_024581

ORF Size: 3321 bp

OTI Disclaimer: The molecular sequence of this clone aligns with the gene accession number as a point of reference only. However, individual transcript sequences of the same gene can differ through naturally occurring variations (e.g. polymorphisms), each with its own valid existence. This clone is substantially in agreement with the reference, but a complete review of all prevailing variants is recommended prior to use. [More info](#)

OTI Annotation: This clone was engineered to express the complete ORF with an expression tag. Expression varies depending on the nature of the gene.

Components: The ORF clone is ion-exchange column purified and shipped in a 2D barcoded Matrix tube containing 10ug of transfection-ready, dried plasmid DNA (reconstitute with 100 ul of water).

Reconstitution Method:

1. Centrifuge at 5,000xg for 5min.
2. Carefully open the tube and add 100ul of sterile water to dissolve the DNA.
3. Close the tube and incubate for 10 minutes at room temperature.
4. Briefly vortex the tube and then do a quick spin (less than 5000xg) to concentrate the liquid at the bottom.
5. Store the suspended plasmid at -20°C. The DNA is stable for at least one year from date of shipping when stored at -20°C.

RefSeq: [NM\\_024581.3](#), [NP\\_078857.4](#)

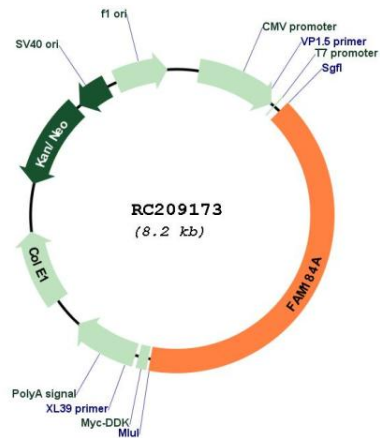
RefSeq Size: 4045 bp

RefSeq ORF: 3423 bp

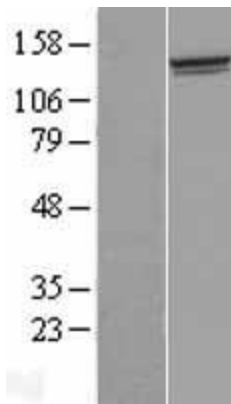
Locus ID: 79632

UniProt ID: [Q8NB25](#)  
 Cytogenetics: 6q22.31  
 MW: 129.5 kDa

**Product images:**



Circular map for RC209173



Western blot validation of overexpression lysate (Cat# [LY411216]) using anti-DDK antibody (Cat# [TA50011-100]). Left: Cell lysates from untransfected HEK293T cells; Right: Cell lysates from HEK293T cells transfected with RC209173 using transfection reagent MegaTran 2.0 (Cat# [TT210002]).