

Product datasheet for **RC209172**

ZNF449 (NM_152695) Human Tagged ORF Clone

Product data:

| | |
|---------------------------|---|
| Product Type: | Expression Plasmids |
| Product Name: | ZNF449 (NM_152695) Human Tagged ORF Clone |
| Tag: | Myc-DDK |
| Symbol: | ZNF449 |
| Synonyms: | ZSCAN19 |
| Mammalian Cell Selection: | Neomycin |
| Vector: | pCMV6-Entry (PS100001) |
| E. coli Selection: | Kanamycin (25 ug/mL) |



[View online »](#)

ORF Nucleotide Sequence:

>RC209172 ORF sequence
 Red=Cloning site Blue=ORF Green=Tags(s)

TTTTGTAATACGACTCACTATAGGGCGGCCGGAATTCGTCGACTGGATCCGGTACCGAGGAGATCTGCC
 GCC**CGCATCGCC**

ATGGCTGTGGCCCTGGGTTGTGCAATCCAGGCATCCTTGAATCAAGGCTCTGTGTTTCAAGAATATGATA
 CTGACTGTGAAGTTTTTCGTGTCAGCGCTTCCAGTACAGAGAAGCAGCTGGGCCCTCATGAAGC
 ATTTAACAAACTCTGGGAGCTTTGCTGTCAATGGCTGAAGCCAAAGATGCGCTCTAAGGAACAAATCCTG
 GAGCTGCTAGTGTGGAGCAATTCCTAATCCTGCCACAGAGATAGAGACCTGGGTGAGGGAGCACT
 GCCCAGAGAATAGAGAAAGAGTTGTGTCCTGATAGAAGACTTACAGAGAGAAGTTGAGATACCAGAGCA
 GCAGGTTGATATGCATGACATGCTCTTGAAGAAGTGGCACCAGTGGGAACGGCACACATACCACCAACC
 ATGCACCTAGAGTCACTGCCTCCAGGTAAATGGGACCTGCCAGGAGGCCCCAGTAGCAGAGGCATGGA
 TCCACAGGCAGGGCCACCGGAGCTGAACTATGGTGTACTGGAGAATGCAGAAGTTCTGGACCTGG
 ATATCCATTACAAAACCTTGACATGAACTTCTCATTGGAGAATAGAGAAGAGCCATGGGTGAAGGAATTA
 CAGGATTCCTAAAGAAATGAAACAATTACTTGTCCAGATAGGTTTTGAGATCGGGATAGAAAATGAAG
 AAGATACTTCAAAACAGAAAAAATGGAGACTATGTATCCATTTATTGTAACCTTAGAGGGGAATGCTCT
 CCAGGGTCCCATTTTGCAAAAAGACTATGTACAGTTAGAAAATCAATGGGAAACCCCCAGAGGATTTA
 CAGACAGATTTAGCAAACTGGTAGATCAGCAGAACCCACTCTGGGAGAGACACCTGAGAACTCCAAC
 TGGAGAACCTCTCAACCCTAACCCCAAGAAAAAGAGTCCAGGAGAGAAACCTCACCAGTGTCTCA
 GTGTGGAAAATGTTTTGCTCGGAAGTCACACTTACTGGGCATCAGAGAATTCATTCAGGAGAAGAACCT
 CACAAATGCCCTGAATGTGGGAAAAGATTCCTTCGTAGTTCAGACCTTTATAGACACCAACGACTTCATA
 CAGGGGAGAGACCTATGAATGCCTGTATGTAAGGCGATTCACTCGGGGTCACATCTATAGGATCA
 CCAGAGAACCCTTCTGAAGAAGAAACATATAAATGTCTTGAGTGTGGGAAAAGTTTTTGTGATGGATCA
 AGTCTTAAAAGACATCTGAAAACCTATACAGGTGAAAAACCTCATAGATGCATAATTGTGGGAAAAGTT
 TTAGTCGACTGACAGCTTACTTTGCACCAGAGAACGCATACTGAAGAGAGACCTTTTAAATGTAATTA
 TTGTGGGAAAAGTTTTAGACAGAGACCAAGCCTCGTTATTCATTTAAGAAATCCACACAGGGGAGAAGCCA
 TACAAGTGTACTATTGTTCTAAAAGCTTCAGACAGAGAGCCGCCTTATTATGCACCAGGTCACCTACT
 TTAGAGGACTTATT

ACGCGTACGCGGCCGCTCGAGCAGAAACTCATCTCAGAAGAGGATCTGGCAGCAAATGATATCCTGGATT
 ACAAGGATGACGACGATAAGGTTTAA

Protein Sequence:

>RC209172 protein sequence
 Red=Cloning site Green=Tags(s)

MAVALGCAIQASLNQGSVFQEYDCEVFRQFRQFYREAAAGPHEAFNKLWELCCQWLKPKMRSKEQIL
 ELLVLEQFLTILPTEIETWVREHCPENRERVVSLIEDLQRELEIPEQQVDMHMLLEELAPVGAHIPPT
 MHLESPALQVMGPAQEAPVAEAWIPQAGPPELNYGATGECQNFDPGYPLPKLDMNFSLENREEPWVKEL
 QDSKEMKQLLDSKIGFEIGIENEEDTSKQKMETMYPFIVTLEGNALQGPILQKDYVQLENQWETPPEDL
 QTDLAKLVDQNPPLGETPENSLEEPLNPKPHKKKSPGKPHRCPQCGKCFARKSQLTGHQRIHSGEEP
 HKCPECGKRFRLSSDLYRHQRLHTGERPYECTVCKKRFTRRSHLIGHQRTHSEETKCLECGKSFCHGS
 SLKRHLKTHTEKPHRCHNCGKSFRLTALTLHQRTHTEERPFCNKYCGKSFRQRPVLIHLRIHTGKPK
 YKCTHCSKSFQRAGLIMHQVTHFRGLI

TRTRPLEQKLISEEDLAANDILDYKDDDDKV

Chromatograms:

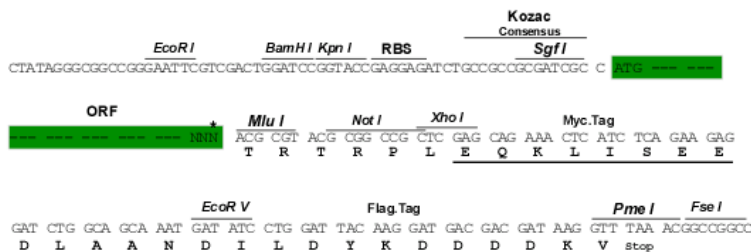
https://cdn.origene.com/chromatograms/mk6126_e05.zip

Restriction Sites:

Sgfl-MluI

Cloning Scheme:

Cloning sites used for ORF Shutting:



* The last codon before the Stop codon of the ORF

ACCN: NM_152695

ORF Size: 1554 bp

OTI Disclaimer: The molecular sequence of this clone aligns with the gene accession number as a point of reference only. However, individual transcript sequences of the same gene can differ through naturally occurring variations (e.g. polymorphisms), each with its own valid existence. This clone is substantially in agreement with the reference, but a complete review of all prevailing variants is recommended prior to use. [More info](#)

OTI Annotation: This clone was engineered to express the complete ORF with an expression tag. Expression varies depending on the nature of the gene.

Components: The ORF clone is ion-exchange column purified and shipped in a 2D barcoded Matrix tube containing 10ug of transfection-ready, dried plasmid DNA (reconstitute with 100 ul of water).

Reconstitution Method:

1. Centrifuge at 5,000xg for 5min.
2. Carefully open the tube and add 100ul of sterile water to dissolve the DNA.
3. Close the tube and incubate for 10 minutes at room temperature.
4. Briefly vortex the tube and then do a quick spin (less than 5000xg) to concentrate the liquid at the bottom.
5. Store the suspended plasmid at -20°C. The DNA is stable for at least one year from date of shipping when stored at -20°C.

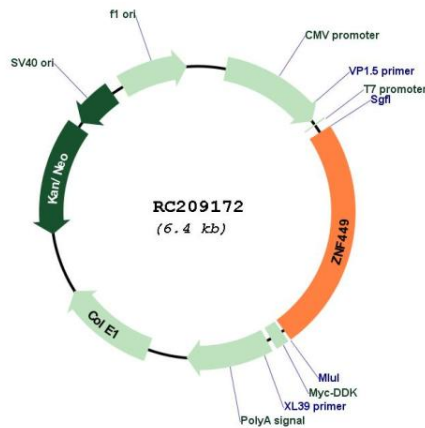
RefSeq: [NM_152695.6](#)
RefSeq Size: 4059 bp

RefSeq ORF: 1557 bp

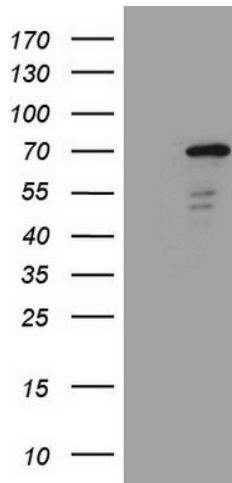
Locus ID: 203523

UniProt ID: [Q6P9G9](#)
Cytogenetics: Xq26.3

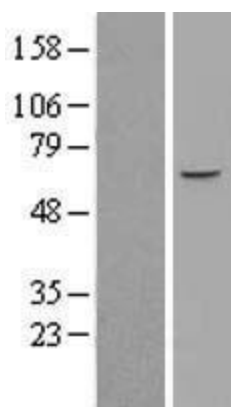
Domains: LER, zf-C2H2
Protein Families: Transcription Factors
MW: 59.9 kDa
Gene Summary: This gene encodes a nuclear protein that likely functions as a transcription factor. The protein includes an N-terminal SCAN domain, and seven C2H2-type zinc finger motifs. [provided by RefSeq, May 2010]

Product images:


Circular map for RC209172



HEK293T cells were transfected with the pCMV6-ENTRY control (Cat# [PS100001], Left lane) or pCMV6-ENTRY ZNF449 (Cat# RC209172, Right lane) cDNA for 48 hrs and lysed. Equivalent amounts of cell lysates (5 ug per lane) were separated by SDS-PAGE and immunoblotted with anti-ZNF449 (Cat# [TA808530])(1:2000). Positive lysates [LY403487] (100ug) and [LC403487] (20ug) can be purchased separately from OriGene.



Western blot validation of overexpression lysate (Cat# [LY403487]) using anti-DDK antibody (Cat# [TA50011-100]). Left: Cell lysates from untransfected HEK293T cells; Right: Cell lysates from HEK293T cells transfected with RC209172 using transfection reagent MegaTran 2.0 (Cat# [TT210002]).