

Product datasheet for **RC209167**

CNKSR3 (NM_173515) Human Tagged ORF Clone

Product data:

Product Type:	Expression Plasmids
Product Name:	CNKSR3 (NM_173515) Human Tagged ORF Clone
Tag:	Myc-DDK
Symbol:	CNKSR3
Synonyms:	CNK3; CNK3/IPCEF1; MAGI1
Mammalian Cell Selection:	Neomycin
Vector:	pCMV6-Entry (PS100001)
E. coli Selection:	Kanamycin (25 ug/mL)



[View online »](#)

ORF Nucleotide Sequence:

>RC209167 ORF sequence
 Red=Cloning site Blue=ORF Green=Tags(s)

TTTTGTAATACGACTCACTATAGGGCGGCCGGAATTCGTCGACTGGATCCGGTACCGAGGAGATCTGCC
 GCC**CGCATCGCC**

ATGGAACCCGTGACCAAGTGGAGCCCCAAACAAGTGGTGGACTGGACTAGAGGGTTGGATGACTGCCTGC
 AACAAATATGTCCACAAGTTTGAACGAGAGAAGATCAACGGCGAGCAGCTGCTGCAGATTTCCCATCAGGA
 CCTGGAGGAGCTGGGGTACACGGATCGGACACCAGGAGCTTGTGTTGGAGGCTGTGGACCTTCTCTGT
 GCACTGAATTATGGCCTCGAAACTGATAACATGAAGAAGTGGTCTGAAACTGAGAGCATCTCCACACA
 ATTTACAGAATTACATAAGTAGCCGACGAAAAGTCCCGTTACGATGGCAACACCTCCCGCAAGGCCCC
 CAATGAGTTCCTGACCTCGGTGGTGGAGCTCATCGGCGCCGCAAGGCCCTGCTGGCGTGGCTGGACCG
 GCTCCGTTTACAGGGATCACTGATTTCTAGTCACGAAGAACAAAATTATCCAGCTTTGCTTGGACCTGA
 CCACTACAGTCCAGAAGGATTGCTTTGTAGCGGAAATGGAGGATAAAGTTTTAACTGTGGTCAAGTTTT
 AAATGGCATCTGTGACAAAACAATCCGATCTACCACAGATCCTGTGATGAGCCAGTGTGCATGTCTGGAG
 GAAGTTCACTTACCAAACATTAACCTGGGGAAGGCTGGGCATGTACATCAAATCAACCTATGATGGGT
 TACACGTGATTACTGGAACCACAGAAAATTCTCCTGCAGACAGATCTCAGAAGATTATGCTGGTACGA
 AGTCATTCAAGTTAATCAGCAAAGTGTGGTGGGATGGCAGCTGAAAAATCTGGTGAAGAAATGAGAGAG
 AATCCCACCGAGTTGTGTTACTGCTTAAGAAGCGCCCCACCGGGTCTTCAACTTTACTCCTGCTCCCC
 TGA AAAACCTACGGTGAAGCCACCTCTGTACAGACCTCACCTCCACCCGCGACAACCCAGTCCCTGA
 AAGCACTATGGATACCTCACTGAAGAAGGAGAAGTCAAGCATCCTGGATCTTTATATTCTCCTCCGCT
 GCTGTTCCCTACTCTCCCGGGATGAGAATGGCAGTTTTGTTATGGAGGGTCCAGTAAGTGCAAACAAC
 CATTGCCTGGTCTAAGGGTTCAGAGTCCCCGAATTCCTTCTGGACCAGGAAAGCCGGAGACGAAGATT
 CACCATTGCAGACTCGGATCAGTTGCCTGGTACTCGGTGGAAACCAACATTCTGCCACAAAAATGAGA
 GAGAAAACACCATCTTATGGCAAGCCACGGCTTTGTCCATGCCTGCTGATGGAACTGGATGGGGATTG
 TGGACCCTTTTGCAGACCTCGAGGTCATGGCAGGAAAGGGGAGGATGCCCTTTGCCGGTATTTAGTAA
 CGAGCGGATTCTCCGATCATTGAAGAGAGCTCCTCTCCCCATACCGGTTCTCCAGACCCACGACCGAG
 CGGCATCTGGTCCGGGTGCGGACTACATCCGAGGAAGCAGGTGCTACATCAACTCAGATCTCCACAGCA
 GCGCCACGATTCCATTCCAGGAGGAAGGGACAAAAAGAAATCTGGCTCCTCAGTACGAAGTCTCGTC
 CACAGAACCGTCCCTCCTGGTCACTGGTTTACGCGCCTCAAAGTGTGACTCAC

ACGCGTACGCGGCCGCTCGAGCAGAAACTCATCTCAGAAGAGGATCTGGCAGCAAATGATATCCTGGATT
 ACAAGGATGACGACGATAAGGTTTAA

Protein Sequence:

>RC209167 protein sequence
 Red=Cloning site Green=Tags(s)

MEPVTKWSPKQVVDWTRGLDDCLQQYVHKFEREKINGEQLLQISHQDLEELGVTRIGHQELVLEAVDLLC
 ALNYGLETDNMKNLVLKLRASSHNLQNYISSRRKSPAYDGNTSRKAPNEFLTSVVELIGAALKALLAWLDR
 APFTGITDFSVTKNKIIQLCLDLTTTVQKDCFVAEMEDKVLTVVKVLNGICDKTIRSTDPVMSQCACLE
 EVHLPNIKPGELGMYIKSTYDGLHVITGTTENSPADRSQKIHAGDEVIQVNNQTVVQWQLKNLVKLLRE
 NPTGVVLLLKKRPTGSFNFTAPLKNLRWKPLVQTSPPPATTQSPESTMDTSLKKEKSAILDLYIPPPP
 AVPYSPRDENG SFVYGGSSKCKQPLPGPKGSESPNSFLDQESRRRRFTIADSDQLPGYSVETNLPKMR
 EKTPSYGKPRPLSMPADGNWGMIVDPFARPRGHGRKGEDALCRYFSNERIPPIIESSPPYRFSRPTTE
 RHLVRGADYIRGSRCYINSDLHSSATIPFQEETGKKKSGSSATKSSSTEPSSLVSWFTRLKLLTH

TRTRPLEQKLI SEEDLAANDILDYKDDDDKV

Chromatograms:

https://cdn.origene.com/chromatograms/mk6147_a11.zip

Restriction Sites:

Sgfl-Mlul

Cloning Scheme:

ACCN: NM_173515

ORF Size: 1665 bp

OTI Disclaimer: The molecular sequence of this clone aligns with the gene accession number as a point of reference only. However, individual transcript sequences of the same gene can differ through naturally occurring variations (e.g. polymorphisms), each with its own valid existence. This clone is substantially in agreement with the reference, but a complete review of all prevailing variants is recommended prior to use. [More info](#)

OTI Annotation: This clone was engineered to express the complete ORF with an expression tag. Expression varies depending on the nature of the gene.

Components: The ORF clone is ion-exchange column purified and shipped in a 2D barcoded Matrix tube containing 10ug of transfection-ready, dried plasmid DNA (reconstitute with 100 ul of water).

- Reconstitution Method:**
1. Centrifuge at 5,000xg for 5min.
 2. Carefully open the tube and add 100ul of sterile water to dissolve the DNA.
 3. Close the tube and incubate for 10 minutes at room temperature.
 4. Briefly vortex the tube and then do a quick spin (less than 5000xg) to concentrate the liquid at the bottom.
 5. Store the suspended plasmid at -20°C. The DNA is stable for at least one year from date of shipping when stored at -20°C.

RefSeq: [NM_173515.4](#)
RefSeq Size: 3277 bp

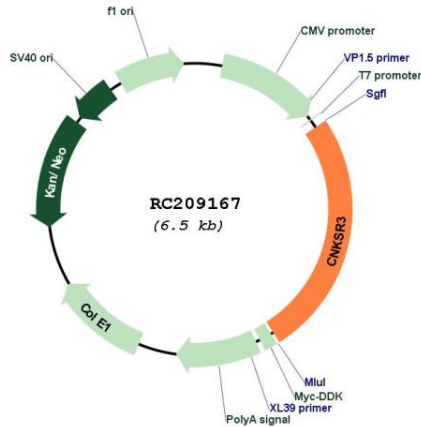
RefSeq ORF: 1668 bp

Locus ID: 154043

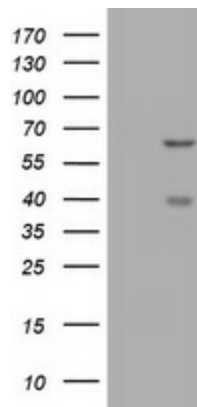
UniProt ID: [Q6P9H4](#)

Cytogenetics: 6q25.2
Protein Families: Druggable Genome
MW: 61.9 kDa
Gene Summary: Involved in transepithelial sodium transport. Regulates aldosterone-induced and epithelial sodium channel (ENaC)-mediated sodium transport through regulation of ENaC cell surface expression. Acts as a scaffold protein coordinating the assembly of an ENaC-regulatory complex (ERC).[UniProtKB/Swiss-Prot Function]

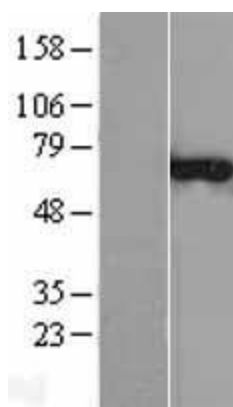
Product images:



Circular map for RC209167



HEK293T cells were transfected with the pCMV6-ENTRY control (Cat# [PS100001], Left lane) or pCMV6-ENTRY CNKSR3 (Cat# RC209167, Right lane) cDNA for 48 hrs and lysed. Equivalent amounts of cell lysates (5 ug per lane) were separated by SDS-PAGE and immunoblotted with anti-CNKSR3(Cat# [TA504737]). Positive lysates [LY403559] (100ug) and [LC403559] (20ug) can be purchased separately from OriGene.



Western blot validation of overexpression lysate (Cat# [LY403559]) using anti-DDK antibody (Cat# [TA50011-100]). Left: Cell lysates from untransfected HEK293T cells; Right: Cell lysates from HEK293T cells transfected with RC209167 using transfection reagent MegaTran 2.0 (Cat# [TT210002]).