

Product datasheet for RC209160

FAM43A (NM_153690) Human Tagged ORF Clone

Product data:

Product Type:	Expression Plasmids
Product Name:	FAM43A (NM_153690) Human Tagged ORF Clone
Tag:	Myc-DDK
Symbol:	FAM43A
Mammalian Cell Selection:	Neomycin
Vector:	pCMV6-Entry (PS100001)
E. coli Selection:	Kanamycin (25 ug/mL)
ORF Nucleotide Sequence:	>RC209160 ORF sequence Red=Cloning site Blue=ORF Green=Tags(s)

TTTTGTAATACGACTCACTATAGGGCGGCCGGAATTCGTCGACTGGATCCGGTACCGAGGAGATCTGCCGCCGCGATCGCC

ATGCTGCCGTGGAAGAAGCACAAGTTCGAGCTGCTGGCCGAGGCGCCGCCGCGCAGGCGTCCAAGCCCA
AGGGCTACGCTGTGAGCCTGCACTACTCGGCGCTCAGCTCGTGGCGCGGGCGTGCCCCAAGGCGCGCT
TAGCCGGGTGGGCAGCATGTTCCGCTCCAAGCGCAAGAAGCTGCACATCACTAGCGAGGACCCAATTAC
ACCGTGTCTACCTGGCAATGCCACCACCATCCAGGCGCGCGGCGACGGCTGCACCGACCTTGTGTGG
GCAAGATCTGGAGCAAGAGCGAGGCGGGCCGTCAGGGCAACAAGATGAAGCTGACGGTGAAGTGGCAGGG
TATCCGCATGGTGACGCGAGGAGCGCGCTGCGCCGCCCGGGCCACCTCTACCTGCTGCACCCGCTC
ACCTACTGCGTGGCCGACGCGCGCTGCCCAAGTCTTCGCTGGGTGTACCGGCACGAGCTGAAGCACA
AGGCCGTGATGCTGCGCTGCCACGCCGTGCTGGTGTCCAAGCCGAAAAGGCGCAGGCCATGGCCCTGCT
GCTCTACCAGACGTCGGCCAACGCGCTGGCGGAATTTAAACGCCTCAAGCGGCGGGACGACGCGCTCAC
CAGCAGCAGGAGCTGGTGGGCGCACACACCATCCCGCTAGTGCCGCTGCGCAAGCTGCTCTACACGGAC
CCTGCTGCTATAAACCGCCGGTGGAGCGCAGCCGACGCGCCCAAGCTTGGCTCCATACCGAGGACCT
GCTCGCGAACAGCTGGAGCAGGAGCTGCAGGAGGAAGAGGAAGAGGAGCAACCCGAGGGCTGCCCGGAG
GAGGAGGAGAACCGTGCAGCAGAGGAGATCCAGCAGAGGAGGAGCCGAGGCGCAGCGTGCCTAGTGG
TCGCCATGCACCTTGAGTGCGGGGACTTGTGGATACTCTGGAGAATGGCCGTGGGGAGGCGCTAGGAGG
CGCGGGGGCTCCCTGGGCCCGGGGCGGGCCGCGCCTCTGCTGCTGGGCAGCGCCTCCGACATGAAG
GCTGAGCTGTGCAACTTATTAGCGACCTGGGCGAGCTCAGTTTCGGCAACGACGTGCGCACCCCTGCAGG
CCGACTTGCGGGTGACGCGCCTGCTGTCAGGCGACAGCACGGGCGAGGAGCTCCATCGAGGGCGGGG
CCCTGACGCCACCTCCGCCACCGCCGGGACTCGTCCCGCAGGCCGACGGCGCCAGTGCAGACGAGCC
CACTCGGC

ACGCGTACGCGGCCGCTCGAGCAGAACTCATCTCAGAAGAGGATCTGGCAGCAAATGATATCTGGATT
ACAAGGATGACGACGATAAGGTTTAA



Protein Sequence: >RC209160 protein sequence
Red=Cloning site Green=Tags(s)

MLPWKKHKFELLAEAPPRQASKPKGYAVSLHYSALSSARACPEGALSRVGSFMFRSKRKKLHITSEDPTY
 TVLYLGNATTIQARGDGDLDLAVGKIWSKSEAGRQGTKMKMLTVSAQGIRMVHAERALRRPGHLYLLHRV
 TYCVADARLPKVF AWVYRHELKHKAVMLRCHAVLVSKPEKAQAMALLL YQTSANALAEFKRLKRRDDARH
 QQQLVGAHTIPLVPLRKL LLLHGPPCCYKPPVERSR SAPKLG SITEDLLGEQLEQELQEEEEEEQPEGCEP
 EEENRAAEGDPAEEEEAEAQRALV VAMHFECGDL DLTLENGRGEALGGGGSLGPGAGPPPLLLGSASDMK
 AELSQLISDLGELSF GNDVRTLQADLRVTRLLSGDSTGSESSIEGGPDATSATAGDSSRQADGASADEP
 HSG

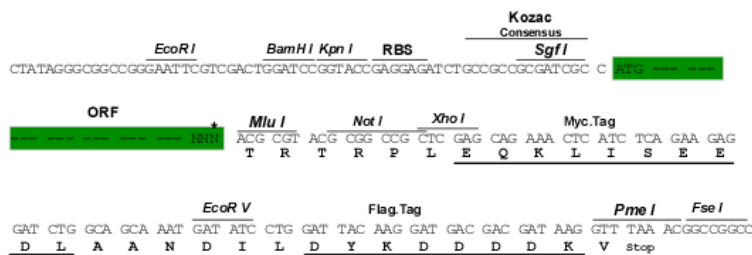
TRTRPLEQKLISEEDLAANDILDYKDDDDKV

Chromatograms: https://cdn.origene.com/chromatograms/mk6451_e12.zip

Restriction Sites: SgfI-MluI

Cloning Scheme:

Cloning sites used for ORF Shuttling:



* The last codon before the Stop codon of the ORF

ACCN: NM_153690

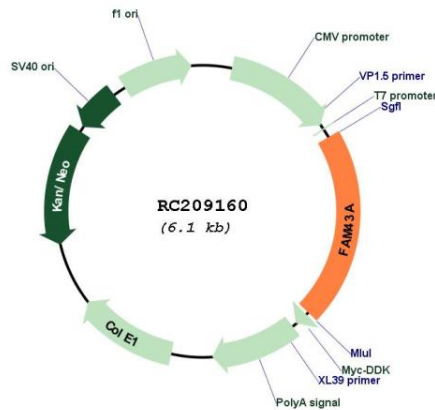
ORF Size: 1269 bp

OTI Disclaimer: Due to the inherent nature of this plasmid, standard methods to replicate additional amounts of DNA in E. coli are highly likely to result in mutations and/or rearrangements. Therefore, OriGene does not guarantee the capability to replicate this plasmid DNA. Additional amounts of DNA can be purchased from OriGene with batch-specific, full-sequence verification at a reduced cost. Please contact our customer care team at custsupport@origene.com or by calling 301.340.3188 option 3 for pricing and delivery.

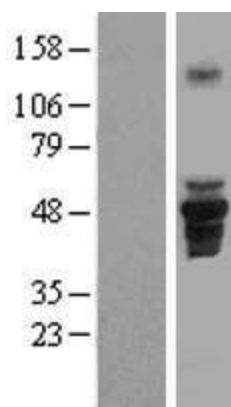
The molecular sequence of this clone aligns with the gene accession number as a point of reference only. However, individual transcript sequences of the same gene can differ through naturally occurring variations (e.g. polymorphisms), each with its own valid existence. This clone is substantially in agreement with the reference, but a complete review of all prevailing variants is recommended prior to use. [More info](#)

OTI Annotation:	This clone was engineered to express the complete ORF with an expression tag. Expression varies depending on the nature of the gene.
Components:	The ORF clone is ion-exchange column purified and shipped in a 2D barcoded Matrix tube containing 10ug of transfection-ready, dried plasmid DNA (reconstitute with 100 ul of water).
Reconstitution Method:	<ol style="list-style-type: none">1. Centrifuge at 5,000xg for 5min.2. Carefully open the tube and add 100ul of sterile water to dissolve the DNA.3. Close the tube and incubate for 10 minutes at room temperature.4. Briefly vortex the tube and then do a quick spin (less than 5000xg) to concentrate the liquid at the bottom.5. Store the suspended plasmid at -20°C. The DNA is stable for at least one year from date of shipping when stored at -20°C.
RefSeq:	NM_153690.5
RefSeq Size:	3182 bp
RefSeq ORF:	1272 bp
Locus ID:	131583
UniProt ID:	Q8N2R8
Cytogenetics:	3q29
Domains:	PID
MW:	45.8 kDa

Product images:



Circular map for RC209160



Western blot validation of overexpression lysate (Cat# [LY406932]) using anti-DDK antibody (Cat# [TA50011-100]). Left: Cell lysates from untransfected HEK293T cells; Right: Cell lysates from HEK293T cells transfected with RC209160 using transfection reagent MegaTran 2.0 (Cat# [TT210002]).