

## Product datasheet for **RC209156**

### **ARMCX5 (NM\_022838) Human Tagged ORF Clone**

#### **Product data:**

Product Type:	Expression Plasmids
Product Name:	ARMCX5 (NM_022838) Human Tagged ORF Clone
Tag:	Myc-DDK
Symbol:	ARMCX5
Synonyms:	GASP5
Mammalian Cell Selection:	Neomycin
Vector:	pCMV6-Entry (PS100001)
E. coli Selection:	Kanamycin (25 ug/mL)



[View online »](#)

**ORF Nucleotide Sequence:**

>RC209156 ORF sequence  
 Red=Cloning site Blue=ORF Green=Tags(s)

TTTTGTAATACGACTCACTATAGGGCGGCCGGAATTCGTCGACTGGATCCGGTACCGAGGAGATCTGCC  
 GCC**GCGATCGCC**

ATGGTTGACTCTGGGACAGAAGCAAGGGCTAGAGGAAAGGCTGAGGCTGGCCTGCAAGATGGAATCAGTG  
 GCCTGCCACTGTAGAGTGAATGGTAAAACCCAGGCCGAGGCAGTGGCTGAGGCAGAAGCTGAAAACAGA  
 ATCAGTGACCCAGGCCAAAGCTGGTGATGGAGCAATGACCAGGACACATACAGTGACCTACAGGGAGGCT  
 ATGGCTGTGACAAGGGAAGTGATCAAGGTGGAAGATACAATAAGACTAGAGTCAAGTTGAGACTAAGA  
 CAAAACCCCTGGCAGAACGCAGTATAGTGCCACAAACCAAGTCAAAGGCCATGCCATGTCTAGGGTCAG  
 TACTGTAACCAAGTCTGAAGTCAAGTTGTTGCTGTCATTGAGGCAAATATTAGTCTATGCCAAGTCA  
 CATGATAAGGCCAATACTGGGTCCAGACCTGACAGAAGGGAAGAGACCAGCATTGGGATGAAATCCAGTG  
 ATGAGGATGAAGAAAATATATGCTCTGGTCTGGACTGGAGAAGAGCCTAGTGTAGGGTCTGGTCTG  
 GCCTGAAGAAGAGACCTCTCTTCAAGTTTATAAGCCCCTACCTAAGATCCAGGAAAAGCCCAAGCCACA  
 CACAAACCCACACTTACTATAAAAACAAAAGGTAATAGCATGGTCAAGGGCCAGGTATATTGCTCTAGTTC  
 CAGTTGAAGGAGGGGAGCAATCCTTGCCTCCAGAAGGAACTGGACCCTGGTTGAGACCTTGATTGAAAC  
 TCCTCTGGGGATTGACCTTTGACCAAGATCCCACCTTATCATGGGCCTTATTACCAGACCTTAGCTGAG  
 ATCAAAAAACAGATTAGGCAAAGGGAAAAGTATGGGCCTAATCCGAAGGCCTGCCACTGCAATCACGTG  
 GCTTTAGTTTAGAGCCTAAAGAGTTTGATAAACTTGTGGCCCTCCTAAGTTAACTAAGGATCCTTTCAT  
 TCATGAAATAGCTACAATGATAATGGGCATCAGTCTGCTTATCCATTTACTCAAGATATAATTCATGAT  
 GTAGGTATTACTGTTATGATTGAAAACCTGGTCAATAATCCCAATGTTAAAGAACCCTGGAGCTTTAA  
 GTATGGTGGATGACAGCTCTGAGTCTCCGAAGAACCAAACTCAGGGGAGTCATATACATCAAGTTTG  
 TAAAGGCATAATCTCTTGCCCTTGAACCTCCCTGTGCAGCTGGCTGGACTGAAATTTACTAGGGCACTTG  
 AGTATAAAATTTGAAGATCACTATGTGATTACCAGTTATATTCCAGATTTCTCACCTTGTTAAACAAGG  
 GAAGTGTCAAACCAAGTTTTATGTTTTAAAAGTGTTCGTTTGTCTAAAAATCACGCCAATACAAG  
 AGAATTGATCAGTGCCAAAGTACTGTCATCATTGGTTGCACCCTTAAACAAGAATGAGTCAAAGGCCAAT  
 ATTCTTAATATTATTGAAATATTTGAGAATATAAATTTTCAGTTCAAACAAAGGCAAAGCTATTTACCA  
 AGGAAAAGTTCACTAAATCTGAGCTTATTTCAATATTCCAGGAAGCAAACAGTTTGGTCAGAACTCCA  
 AGACTTAGCAGAGCACAGTGATCCCGAAGTGAGAGATAAAGTCATACGATTAATACTAAAACCT

**ACGCGT**ACGCGGCCGCTCGAGCAGAAACTCATCTCAGAAGAGGATCTGGCAGCAAATGATATCCTGGATT  
 ACAAGGATGACGACGATAAGGTTTAA

**Protein Sequence:**

>RC209156 protein sequence  
 Red=Cloning site Green=Tags(s)

MVDSGTEARARGKAEAGLQDGISGPATARVNGKTQAEAVAEAEELKTESVTQAKAGDGAMTRTHTVTYREA  
 MAVTREVIKVEDTTKTRVMVETKTKPLAERSIVPQTKSKAMPMSRVSTVTKSEVKVVAVIEANIRSYAKS  
 HDKANTGSRPDRREETSIGMKSSDEEENICSWFWTGEEPSVGSWFWPEEETSLQVYKPLPKIQEKPKPT  
 HKPTLTIKQKVIAWSRARIYIVLVPVEGGEQSLPPEGNWTLVETLIETPLGIRPLTKIPPYHGPYYQLAE  
 IKKQIRQREKYGNPKACHCKSRGFSLEPKFDKLVALLKLTKDPFIHEIATMIMGISPAYPFTQDIHD  
 VGITVMIENLVNPNVKEHPGALSMVDDSESSEEPKSGESYIHQVCKGIISCLNSPVQLAGLKLGLHL  
 SIKFEDHYVITSYIPDFLTLNKGSVKTKFYVLKVFSLSKNHANTRELSAKVLSLVAPFNKNESKAN  
 ILNIIIEIFENINFQFKTKAKLFTKEKFTKSELISIFQEAQFGQKLQDLAEHSDPEVRDKVIRLILKL

**TR**TRPLEQKLISEEDLAANDILDYKDDDDKV

**Chromatograms:**

[https://cdn.origene.com/chromatograms/mk6553\\_e05.zip](https://cdn.origene.com/chromatograms/mk6553_e05.zip)

**Restriction Sites:**

Sgfl-MluI

**Cloning Scheme:**


**ACCN:** NM\_022838

**ORF Size:** 1674 bp

**OTI Disclaimer:** The molecular sequence of this clone aligns with the gene accession number as a point of reference only. However, individual transcript sequences of the same gene can differ through naturally occurring variations (e.g. polymorphisms), each with its own valid existence. This clone is substantially in agreement with the reference, but a complete review of all prevailing variants is recommended prior to use. [More info](#)

**OTI Annotation:** This clone was engineered to express the complete ORF with an expression tag. Expression varies depending on the nature of the gene.

**Components:** The ORF clone is ion-exchange column purified and shipped in a 2D barcoded Matrix tube containing 10ug of transfection-ready, dried plasmid DNA (reconstitute with 100 ul of water).

**Reconstitution Method:**

1. Centrifuge at 5,000xg for 5min.
2. Carefully open the tube and add 100ul of sterile water to dissolve the DNA.
3. Close the tube and incubate for 10 minutes at room temperature.
4. Briefly vortex the tube and then do a quick spin (less than 5000xg) to concentrate the liquid at the bottom.
5. Store the suspended plasmid at -20°C. The DNA is stable for at least one year from date of shipping when stored at -20°C.

**RefSeq:** [NM\\_022838.4](#)

**RefSeq Size:** 2695 bp

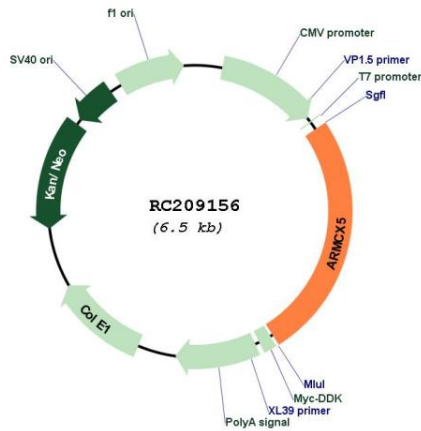
**RefSeq ORF:** 1677 bp

**Locus ID:** 64860

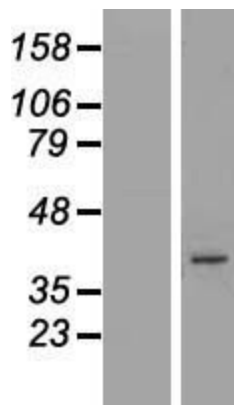
**UniProt ID:** [Q6P1M9](#)

**Cytogenetics:** Xq22.1  
**Domains:** DUF634  
**MW:** 62.3 kDa

**Product images:**



Circular map for RC209156



Western blot validation of overexpression lysate (Cat# [LY411533]) using anti-DDK antibody (Cat# [TA50011-100]). Left: Cell lysates from untransfected HEK293T cells; Right: Cell lysates from HEK293T cells transfected with RC209156 using transfection reagent MegaTran 2.0 (Cat# [TT210002]).