

Product datasheet for **RC209150**

IGFBP3 (NM_000598) Human Tagged ORF Clone

Product data:

| | |
|---------------------------|---|
| Product Type: | Expression Plasmids |
| Product Name: | IGFBP3 (NM_000598) Human Tagged ORF Clone |
| Tag: | Myc-DDK |
| Symbol: | IGFBP3 |
| Synonyms: | BP-53; IBP3 |
| Mammalian Cell Selection: | Neomycin |
| Vector: | pCMV6-Entry (PS100001) |
| E. coli Selection: | Kanamycin (25 ug/mL) |
| ORF Nucleotide Sequence: | >RC209150 representing NM_000598 Red=Cloning site Blue=ORF Green=Tags(s) |

TTTTGTAATACGACTCACTATAGGGCGGCCGGAATTCGTCGACTGGATCCGGTACCGAGGAGATCTGCC
GCC**CGATCGCC**

ATGCAGCGGGCGCAGCCACGCTCTGGGCCGCTGCGCTGACTCTGCTGGTGTGCTCCGCGGGCCGCCGG
TGGCGCGGGCTGGCGGAGCTCGCGGGCTTGGTCCCCTGGTGCCTGCGAGCCGTGCGACGCGGTGC
ACTGGCCAGTGCAGCCTCCGCCCGCTGTGCGCGGAGCTGGTGCAGCCGGGCTGCGGCTGCTGC
CTGACGTGCGCACTGAGCGAGGGCCAGCCGTGCGGCATCTACCCGAGCGCTGTGGCTCCGGCCTTCGT
GCCAGCCGTGCGCGAGGCGCGACCCGTGCAGGCGCTGCTGGACGGCCGCGGCTCTGCGTCAACGC
TAGTGCCGTGAGCCGCTGCGCGCTACCTGCTGCCAGCGCCAGCTCCAGGAAATGCTAGTGAGTCG
GAGGAAGACCGCAGCGCCGGCAGTGTGGAGAGCCGTCGCTCCAGCACGCACCGGGTGTCTGATCCCA
AGTTCCACCCCTCCATTCAAAGATAATCATCATCAAGAAAGGGCATGCTAAAGACAGCCAGCGTACAA
AGTTGACTACGAGTCTCAGAGCACAGATACCCAGAACTTCTCCTCCGAGTCCAAGCGGGAGACAGAATAT
GGTCCCTGCCGTAGAGAAATGGAAGACACACTGAATCACCTGAAGTTCCTCAATGTGCTGAGTCCCAGGG
GTGTACACATTCCTCACTGTGACAAGAAGGATTTTATAAGAAAAGCAGTGTGCGCCTTCCAAAGGCAG
GAAGCGGGGCTTCTGCTGGTGTGTGGATAAGTATGGGCAGCCTCTCCAGGCTACACCACCAAGGGGAAG
GAGGACGTGCACTGCTACAGCATGCAGAGCAAG

ACGCGTACGCGGGCCGCTCGAGCAGAAACTCATCTCAGAAGAGGATCTGGCAGCAAATGATATCCTGGATT
ACAAGGATGACGACGATAAGGTTTAA



[View online »](#)

Protein Sequence: >RC209150 representing NM_000598
Red=Cloning site Green=Tags(s)

MQRARPTLWAAAL TLLVLLRGPPVARAGASSAGLGPVVRCEPCDARALAQCAPPAVCAELVREPGCGCC
 LTCALSEGQPCGIYTERCGSLRCQSPDEARPLQALLDGRGLCVNASAVSRLRAYLLPAPPAPGNASES
 EEDRSAGSVESPSVSSTHRVSDPKFHPLHSKII I I KKGHAKDSQRKYKVDYESQSTDTQNFSSSESKRETEY
 GPCRREMEDTLNHLKFLNVLSPRGVHIPNCDKKGFYKKKQCRPSKGRKRGF CWCVDKYGQPLPGYTTK GK
 EDVHCYSMQSK

TRTRPLEQKLISEEDLAANDILDYKDDDDKV

Chromatograms: https://cdn.origene.com/chromatograms/mg4984_g10.zip

Restriction Sites: SgfI-MluI

Cloning Scheme:

Cloning sites used for ORF Shuttling:



* The last codon before the Stop codon of the ORF

ACCN: NM_000598

ORF Size: 873 bp

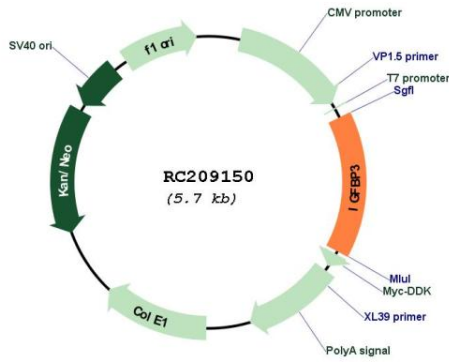
OTI Disclaimer: The molecular sequence of this clone aligns with the gene accession number as a point of reference only. However, individual transcript sequences of the same gene can differ through naturally occurring variations (e.g. polymorphisms), each with its own valid existence. This clone is substantially in agreement with the reference, but a complete review of all prevailing variants is recommended prior to use. [More info](#)

OTI Annotation: This clone was engineered to express the complete ORF with an expression tag. Expression varies depending on the nature of the gene.

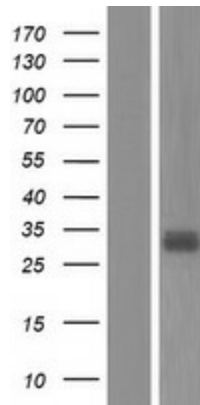
Components: The ORF clone is ion-exchange column purified and shipped in a 2D barcoded Matrix tube containing 10ug of transfection-ready, dried plasmid DNA (reconstitute with 100 ul of water).

| | |
|-------------------------------|---|
| Reconstitution Method: | <ol style="list-style-type: none">1. Centrifuge at 5,000xg for 5min.2. Carefully open the tube and add 100ul of sterile water to dissolve the DNA.3. Close the tube and incubate for 10 minutes at room temperature.4. Briefly vortex the tube and then do a quick spin (less than 5000xg) to concentrate the liquid at the bottom.5. Store the suspended plasmid at -20°C. The DNA is stable for at least one year from date of shipping when stored at -20°C. |
| RefSeq: | NM_000598.5 |
| RefSeq Size: | 2620 bp |
| RefSeq ORF: | 876 bp |
| Locus ID: | 3486 |
| UniProt ID: | P17936 |
| Cytogenetics: | 7p12.3 |
| Domains: | thyroglobulin_1, IB |
| Protein Families: | Druggable Genome, Secreted Protein |
| Protein Pathways: | p53 signaling pathway |
| MW: | 31.67 kDa |
| Gene Summary: | <p>This gene is a member of the insulin-like growth factor binding protein (IGFBP) family and encodes a protein with an IGFBP domain and a thyroglobulin type-I domain. The protein forms a ternary complex with insulin-like growth factor acid-labile subunit (IGFALS) and either insulin-like growth factor (IGF) I or II. In this form, it circulates in the plasma, prolonging the half-life of IGFs and altering their interaction with cell surface receptors. Alternate transcriptional splice variants, encoding different isoforms, have been characterized. [provided by RefSeq, Jul 2008]</p> |

Product images:



Circular map for RC209150



Western blot validation of overexpression lysate (Cat# [LY424615]) using anti-DDK antibody (Cat# [TA50011-100]). Left: Cell lysates from untransfected HEK293T cells; Right: Cell lysates from HEK293T cells transfected with RC209150 using transfection reagent MegaTran 2.0 (Cat# [TT210002]).