

Product datasheet for **RC209139**

SOX4 (NM_003107) Human Tagged ORF Clone

Product data:

Product Type:	Expression Plasmids
Product Name:	SOX4 (NM_003107) Human Tagged ORF Clone
Tag:	Myc-DDK
Symbol:	SOX4
Synonyms:	CSS10; EVI16
Mammalian Cell Selection:	Neomycin
Vector:	pCMV6-Entry (PS100001)
E. coli Selection:	Kanamycin (25 ug/mL)



[View online »](#)

ORF Nucleotide Sequence:

>RC209139 ORF sequence
 Red=Cloning site Blue=ORF Green=Tags(s)

TTTTGTAATACGACTCACTATAGGGCGGCCGGGAATTCGTCGACTGGATCCGGTACCGAGGAGATCTGCC
 GCC**GCGATCGCC**

ATGGTGCAGCAAACCAACAATGCCGAGAACACGGAAGCGTCTGGCCGGCGAGAGCTCGGACTCGGGCC
 CCGGCCTCGAGCTGGGAATCGCCTCCTCCCCACGCCCGCTCCACCGCTCCACGGGCGCAAGGCCGA
 CGACCCGAGCTGGTGCAAGACCCGAGTGGGCACATCAAGCGACCCATGAACGCCTTCATGGTGTGGTCG
 CAGATCGAGCGCGCAAGATCATGGAGCAGTCGCCGACATGCACAACGCCGAGATCTCCAAGCGGCTGG
 GCAAACGCTGGAAGCTGCTCAAAGACAGCGACAAGATCCCTTTTCATTGAGAGGCGGAGCGGCTGCGCT
 CAAGCACATGGCTGACTACCCGACTACAAGTACCGGCCAGGAAGAAGTGAAGTCCGGCAACGCCAAC
 TCCAGCTCCTCGGCCCGCCTCCTCAAGCCGGGGGAGAAGGGAGACAAGTGGTGGCAGTGGCGGG
 GCGGCCATGGGGCGGCCGGCGGGGAGCAGCAACCGGGGGAGGAGGCGCGGTGCGAGTGGCGG
 CGCGCCAACCTCAAACCGCGCAGAAAAGAGCTGCGGCTCAAAGTGGCGGGCGCGGGCGGTGGG
 GTTAGCAAACCGCACGCAAGCTCATCCTGGCAGGCGGCGGCGGCGGGAAAGCAGCGGCTGCCGCC
 CCGCCTCCTTCGCCGCCGAACAGGCGGGGGCGGCCCTGCTGCCCTGGGCGCCGCCCGACACCA
 CTCGCTGTACAAGGCGCGGACTCCCAGCGCCTCGGCCTCCGCCTCCTCGGCAGCCTCGGCTCCGCAGCG
 CTCGGGCCCCGGCAAGCACCTGGCGGAGAAGAAGTGAAGCGCTACTACCTGTTGCGCGGCTGGGCA
 CGTCGTCGTCGCCGTTGGGCGGCGTGGGCGGGGAGCCGACCCAGCGACCCCTGGGCTGTACGAGGA
 GGAGGGCGCGGCTGCTCGCCGACGCGCCAGCCTGAGCGGCCGAGCAGCGCCGCTCGTCCCCCGCC
 GCCGGCCGCTCGCCCGGACACCGCGGCTACGCCAGCCTGCGCGCCGCTCGCCCGCCCGTCCAGCG
 CGCCCTCGCAGCGTCTCCTCGGCTCGTCCACTCCTCCTCCTCCTCCTCGGGCTCCTCGTCTC
 CGACGACGAGTTCGAAGACGACCTGCTCGACCTGAACCCAGCTCAAACCTTGAGAGCATGTCCCTGGG
 AGCTTCAGTTCGTCGTCGGCGCTCGACCGGACCTGGATTTTAACTTCGAGCCGCGCTCCGGCTCGCACT
 TCGAGTTCGGGACTACTGCACGCCGAGGTGAGCGAGATGATCTCGGGAGACTGGCTCGAGTCCAGCAT
 CTCAAACCTGGTTTTACCTAC

AG**GCGACCG**ACGCGTACGCGGCCGCTCGAGCAGAAACTCATCTCAGAAGAGGATCTGGCAGCAAATGATATCC
 TGGATTACAAGGATGACGACGATAAGGTTTAA

Protein Sequence:

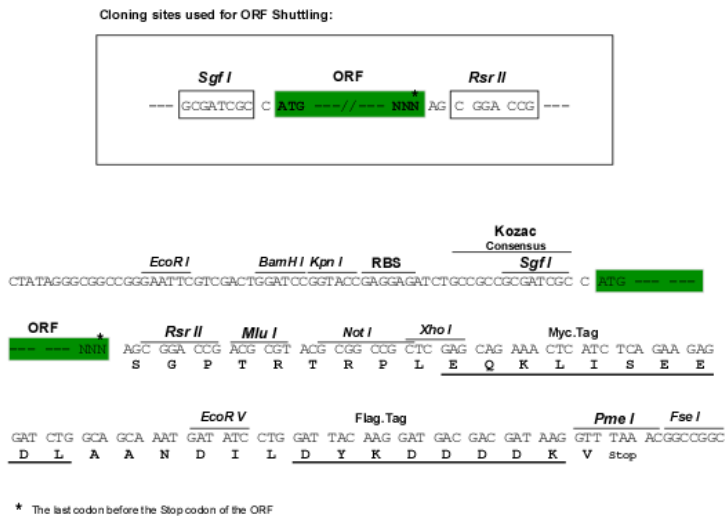
>RC209139 protein sequence
 Red=Cloning site Green=Tags(s)

MVQQTNNAENTEALLAGESSDSGAGLELGIASSPTPGSTASTGGKADDP~~SWCKTPSGHIK~~RMNFMVWS
 QIERRIMEQSPDMHNAEISKRLGKRWLLKDSKIPFIREAERLRLKHMADYPDYKYRPRKKVKSGNAN
 SSSSAAASSKPGEGDKVGGSGGGHGGGGSSNAGGGGGASGGGANSKPAQKKSCGSKVAGGAGGG
 VSKPHAKLILAGGGGGKAAAAAASF~~AEQAGAA~~LPLGAAADHSLYKARTPSASASASSASASAA
 LAAPGKHLAEKKVKRYVLFGGLTSSSPVGGVAGADPSDPLGLYEEEGAGCSPDAPSLSGRSSAASSPA
 AGRSPADHRGYASLRAASPAPSSAPSHASSASSHSSSSSSGSSSSDDEFEDLLDLNPNSSNFESMSLG
 SFSSSSALDRDLDFNFEPGSGSHFEPDYCTPEVSEMISSGDWLESSISNLVFTY

SGPTRTRPLEQKLISEEDLAANDILDYKDDDDKV

Restriction Sites:

Sgfl-RsrII

Cloning Scheme:


ACCN: NM_003107

ORF Size: 1422 bp

OTI Disclaimer: Due to the inherent nature of this plasmid, standard methods to replicate additional amounts of DNA in E. coli are highly likely to result in mutations and/or rearrangements. Therefore, OriGene does not guarantee the capability to replicate this plasmid DNA. Additional amounts of DNA can be purchased from OriGene with batch-specific, full-sequence verification at a reduced cost. Please contact our customer care team at custsupport@origene.com or by calling 301.340.3188 option 3 for pricing and delivery.

The molecular sequence of this clone aligns with the gene accession number as a point of reference only. However, individual transcript sequences of the same gene can differ through naturally occurring variations (e.g. polymorphisms), each with its own valid existence. This clone is substantially in agreement with the reference, but a complete review of all prevailing variants is recommended prior to use. [More info](#)

OTI Annotation: This clone was engineered to express the complete ORF with an expression tag. Expression varies depending on the nature of the gene.

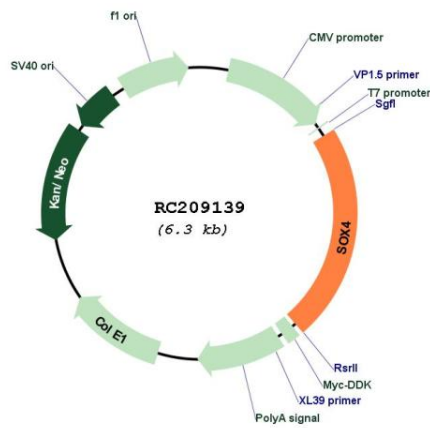
Components: The ORF clone is ion-exchange column purified and shipped in a 2D barcoded Matrix tube containing 10ug of transfection-ready, dried plasmid DNA (reconstitute with 100 ul of water).

- Reconstitution Method:**
1. Centrifuge at 5,000xg for 5min.
 2. Carefully open the tube and add 100ul of sterile water to dissolve the DNA.
 3. Close the tube and incubate for 10 minutes at room temperature.
 4. Briefly vortex the tube and then do a quick spin (less than 5000xg) to concentrate the liquid at the bottom.
 5. Store the suspended plasmid at -20°C. The DNA is stable for at least one year from date of shipping when stored at -20°C.

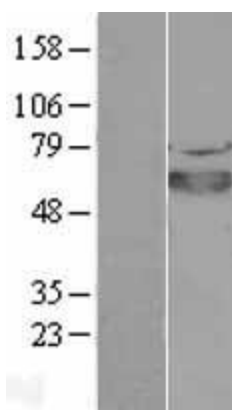
RefSeq: [NM_003107.3](#)
RefSeq Size: 4912 bp
RefSeq ORF: 1425 bp
Locus ID: 6659
UniProt ID: [Q06945](#)
Cytogenetics: 6p22.3
Domains: HMG
Protein Families: Druggable Genome, ES Cell Differentiation/IPS, Induced pluripotent stem cells, Stem cell relevant signaling - TGFb/BMP signaling pathway, Transcription Factors
MW: 47.3 kDa

Gene Summary: This intronless gene encodes a member of the SOX (SRY-related HMG-box) family of transcription factors involved in the regulation of embryonic development and in the determination of the cell fate. The encoded protein may act as a transcriptional regulator after forming a protein complex with other proteins, such as syndecan binding protein (syntenin). The protein may function in the apoptosis pathway leading to cell death as well as to tumorigenesis and may mediate downstream effects of parathyroid hormone (PTH) and PTH-related protein (PTHrP) in bone development. The solution structure has been resolved for the HMG-box of a similar mouse protein. [provided by RefSeq, Jul 2008]

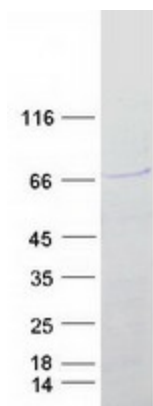
Product images:



Circular map for RC209139



Western blot validation of overexpression lysate (Cat# [LY418894]) using anti-DDK antibody (Cat# [TA50011-100]). Left: Cell lysates from untransfected HEK293T cells; Right: Cell lysates from HEK293T cells transfected with RC209139 using transfection reagent MegaTran 2.0 (Cat# [TT210002]).



Coomassie blue staining of purified SOX4 protein (Cat# [TP309139]). The protein was produced from HEK293T cells transfected with SOX4 cDNA clone (Cat# RC209139) using MegaTran 2.0 (Cat# [TT210002]).