

## Product datasheet for **RC209138**

### CAF1 (CHAF1A) (NM\_005483) Human Tagged ORF Clone

#### Product data:

Product Type:	Expression Plasmids
Product Name:	CAF1 (CHAF1A) (NM_005483) Human Tagged ORF Clone
Tag:	Myc-DDK
Symbol:	CAF1
Synonyms:	CAF-1; CAF1; CAF1B; CAF1P150; P150
Mammalian Cell Selection:	Neomycin
Vector:	pCMV6-Entry (PS100001)
E. coli Selection:	Kanamycin (25 ug/mL)



[View online »](#)

**ORF Nucleotide Sequence:**

>RC209138 ORF sequence  
 Red=Cloning site Blue=ORF Green=Tags(s)

TTTTGTAATACGACTCACTATAGGGCGGCCGGGAATTCGTCGACTGGATCCGGTACCGAGGAGATCTGCC  
 GCC**CGGATCGCC**

ATGCTGGAGGAGCTGGAGTGCGGGGCGCCCGCCAGGGGAGCCGCCACAGCCATGGATTGCAAGATA  
 GACCAGCTTTTCCAGTTAAGAAGTTAATAACAAGCCGCTGTCGGTTTAAGCGCCTGAATCTTGCCAAA  
 GGGAAAGCCGATGACATGTCAGACGATCAGGGTACTTCTGTGCAAAGTAAAAGCCCGATTAGAGGCC  
 TCTTTGGACACCTTGAAAACTGTCAATGTGGTTCTGACATAGACTTTAGACCGAACTTGTCAACG  
 GGAAGGGTCCCTTAGATAACTTTTTAAGAAATAGAATCGAAACCAGTATTGGCCAGAGCACAGTCATCAT  
 TGATTTGACAGAGGACTCGAATGAGCAGCCAGACAGTCTTGTGGACCACAATAAACTAAATTTCTGAAGCC  
 TCTCCCTCCAGGGAGGCAATAAATGGCCAGCGAGAAGACTGGGGATCAGCAGGGGTTGTTGAAGGCCA  
 TTCAGAACGACAAGTTGGCATTCTGGAGAGACCCTTTCAGACATTCCTTGCAAAACAGAGGAGGAGGG  
 TGTTGGCTGTGGAGGTGCAGGGAGGAGAGCGACTCCCAGGAATGTTCCGCACGGAGCTGCCCGGAGCTG  
 ACGAGTGGCCCGAGAATGTGCCCAAGAGGAGCAGGACAGTTGGAGTGAAGCTGGGGGCATCCTGTTC  
 AAGGGAAGGTGCCTATGGTGGTCTTGCAGGACATCTTGGCTGTGAGACCACCGCAATCAAGTCCCTTCC  
 AGCCACACCCCAAGGCAAGAATGACCCTGAGAGTGAGGTGCTGGAATCTTTCCCGAAGAAGACTCT  
 GTACTCAGCCATTCGTCCTGAGCTCTCCCTCTTCCACCAGCTCGCCGAGGGGCGCCTGCTCCCCAA  
 AGCAGCACAGCAGTACCAGTCCCTTCCACCTCCACGCCCTCCGAGAATAACTAAGAAATTCGTC  
 AGGCTCTACAGAGAAGAACAAGCTCAGACTGCAAAGAGATCAGGAGCGTCTGGCAAGCAGCTCAAGTTA  
 CGTGCAGAAAGGGAAGAAAAGGAGAAGCTGAAAGAGGAGGCCAAGCGGGCAAGGAGGAGCCAAAGA  
 AGAAGAGGAAGAGAAGGAGCTTAAGGAAAAGGAGAGCGGGGAGAAGCGGAGAAGGATGAGAAGGAG  
 GCGGAGAAAGCAGCGGCTCAAGGAGGAGCGGCCAAGGAGAGACAGGAAGCCCTGGAGGCTAAACTTGAG  
 GAAAAAGGAAAAAGGAAGAAGGAAACGGTTAAGAGAAGAAGAGAAGCGCATTAAAGCAGAGAAGGCCG  
 AAATCACGAGGTTCTTCCAGAAACAAAGACTCCACAGGCCCCCAAGACCCTGGCCGGCTCCTGTGGAA  
 GTTTGCCCTTTGAAATTAAGAGCACATGGTCTGGCCCTCGGCGTCGGACCCTTCCATCCAGAC  
 CTCTGCAGTCACTGGACCAGCTCCTCCAGCAGCAGAGCGGCGAGTTCTCCTTCTGAAAGACCTCAAAG  
 GCCGCAGCCCTGAGGTCGGACCCACGCAGTTTCCACCCGGAATGCAGATATTTTTAACAGTGTGT  
 CGTCATCGTGGAGCGTGGGAAGGGCGACGGTGTCCCGAGAGGAGGAAGTTTGGCAGGATGAAGCTCCTG  
 CAGTTCTGTGAGAACCACCGCCTGCTACTGGGGTACCTGGAATAAGAAGACGGCACTCATCCGCGCGC  
 GAGACCCCTGGGCCAGGACACGAAGCTCCTGGACTATGAGGTGGACAGTGTGAGGAGTGGGAAGAAGA  
 GGAGCCTGGGGAGTCCCTGTCCACAGTGAAGGGGATGATGATGACGACATGGGAGAGGATGAAGATGAG  
 GACGATGGTTCTTTGTGCCCATGGGTACCTGTCTGAGGACGAAGGTGTGACAGAGGAGTGTGCCGACC  
 CTGAGAACCATAAGGTCCGCCAGAACTGAAGGCCAAGGAGTGGGACGAGTTCTGGTAAGGGGAAGCG  
 CTTTCGCGTCTGCAACCTGTGAAGATCGGCTGCGTGTGGGCGGCTGACAGAGACTGCGCAGGCGATGAC  
 CTGAAGGTACTGCAGCAGTTTCGACGCTGCTTCTGGAGACCCTGCCGGCCAGGAGGAGCAGACGCCCA  
 AGGCTTCAAGCGGGAGAGGAGAGACGAGCAGATCCTGGCCAGCTGCTGCCGCTCCTGCACGGCAATGT  
 GAACGGGAGCAAGGTATCATCCGGGAGTTCCAGGAGCACTGCCCGGGGACTGCTCAGCAACCCACACC  
 GGCAGCCCGGGAGCCCTCCACCACCTACCTGCACACCCCAACCCAGCGAGGATGCCCCATCCCT  
 CTAAGTCCCGGCTCAAGCGGCTATTTCCGAGAACTCAGTGTATGAGAAGCGGCCTGACTTCAGGATGTG  
 CTGGTACGTGACCCGCAGGTGCTACAGAGCTTCCAGCAGGAGCACCTGCCCGTCCGCTGCCAGTGGAGC  
 TATGTGACATCGGTGCCCTCGGCCCCAAAGAGGACAGTGGCAGCGTCCCTCCACGGGGCCAGCCAGG  
 GCACTCCCATCTCGTGAAGAGGAAGTCAAGGAGCATGTCATCACCAATTCATGAAGAAGCGCAG  
 GCACGACGGCCAGATTGGTGTGAAGACATGGACGGCTTCCAGGCAGACACGGAGGAGGAGAAGAGGAG  
 GAGGGCGACTGTATGATCGTGGATGTCCGGATGCTGCGGAGGTCAAGCCCGTGTGGAGCCGCTCCG  
 GAGCTGGGGTGGTGTGGGGTGGACACCGGAAGGCCACCTGACCGGAGCCACTGGGTGCATCC

**ACGCGT**ACGCGGCCGCTCGAGCAGAACTCATCTCAGAAGAGGATCTGGCAGCAAATGATATCCTGGATT  
 ACAAGGATGACGACGATAAGGTTTAA

**Protein Sequence:** >RC209138 protein sequence  
 Red=Cloning site Green=Tags(s)

```
MLEEECEGAPGARGAATAMDCKDRPAPFVKLLIQARLPFKRLNLVPGKADDMDDQGTSVQSKSPDLEA
SLDTLENNCHVGSIDIDFRPKLVNGKGPLDNFLNRRIETSIGQSTVIIDL TEDSNEQPDSLVDHNKLNSEA
SPSREAIHQREDTGDQQGLLKAIQNDKLAFFGETLSDIPCKTEEEGVGCGGAGRRGDSQECSPRSCPEL
TSGPRMCPKREQDSWSEAGGILFKGKVPMMVVLQDILAVRPPQIKSLPATPQGNMTPSEVLESFPEEDS
VLSHSSLSPSSSTSSPEGPPAPPKQHSSTSPFPTSTPLRRITKKFVKGSTTEKNKLRQLRDQERLQKQLKL
RAEEREEKLEKKEAKRAKEEAKKKKEEELKEKERREKREKDEKEKAQRLKEERRKERQEALEAKLE
EKRKKEEERKLEEEKRIKAEKAEITRFFQKPKTPQAPKTLAGSCGKFAPFEIKEHMLVAPRRRTAFHPD
LCSQLDQLLQQQSGEFSFLKDLKGRQPLRSGPTHVSTRNADIFNSDVVIVERGKGDGVPERRKFGRMKLL
QFCENHRPAYWGTWNKKTALIRARDPWAQDTKLLDYEVDSEDEWEEEEPGEESLHSEGDGDDDDMGEDEDE
DDGFFVPHGYLSEDEGVTEECADPENHKVRQKLKAKEWDEFLLAKGKFRVLPVKIGCVWAADRDCAGDD
LKVLQQFAACFLETLPAAQEEQTPKASKRERRDEQILAQLPLLHGNVNGSKVIIREFQEHCRRGLLSNHT
GSPRSPSTTYLHTPTSEDAAIPSKSRLLKRLISENSVYEKRPDFRMCWYVHPQVLQSFQQEHLVPVCQWS
YYTSVPSAPKEDSGSVSPSTGPSQGTPI SLKRKSAGSMCI TQFMKKRRHDGQIGAEDMDGFQADTEEEEE
EGDCMIVDVPDAAEVQAPCGAASGAGGGVGVDTGKATLTASPLGAS
```

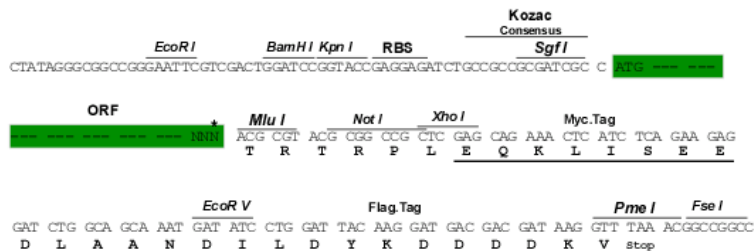
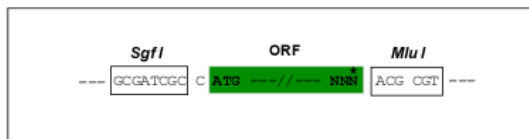
TRTRPLEQKLISEEDLAANDILDYKDDDDKV

**Chromatograms:** [https://cdn.origene.com/chromatograms/mk6293\\_f04.zip](https://cdn.origene.com/chromatograms/mk6293_f04.zip)

**Restriction Sites:** SgfI-MluI

**Cloning Scheme:**

Cloning sites used for ORF Shuttling:



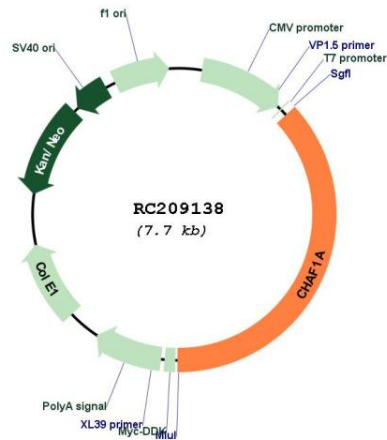
\* The last codon before the Stop codon of the ORF

**ACCN:** NM\_005483

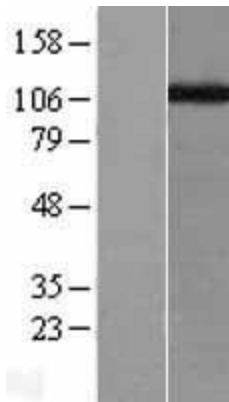
**ORF Size:** 2868 bp

<b>OTI Disclaimer:</b>	The molecular sequence of this clone aligns with the gene accession number as a point of reference only. However, individual transcript sequences of the same gene can differ through naturally occurring variations (e.g. polymorphisms), each with its own valid existence. This clone is substantially in agreement with the reference, but a complete review of all prevailing variants is recommended prior to use. <a href="#">More info</a>
<b>OTI Annotation:</b>	This clone was engineered to express the complete ORF with an expression tag. Expression varies depending on the nature of the gene.
<b>Components:</b>	The ORF clone is ion-exchange column purified and shipped in a 2D barcoded Matrix tube containing 10ug of transfection-ready, dried plasmid DNA (reconstitute with 100 ul of water).
<b>Reconstitution Method:</b>	<ol style="list-style-type: none"><li>1. Centrifuge at 5,000xg for 5min.</li><li>2. Carefully open the tube and add 100ul of sterile water to dissolve the DNA.</li><li>3. Close the tube and incubate for 10 minutes at room temperature.</li><li>4. Briefly vortex the tube and then do a quick spin (less than 5000xg) to concentrate the liquid at the bottom.</li><li>5. Store the suspended plasmid at -20°C. The DNA is stable for at least one year from date of shipping when stored at -20°C.</li></ol>
<b>Note:</b>	Plasmids are not sterile. For experiments where strict sterility is required, filtration with 0.22um filter is required.
<b>RefSeq:</b>	<a href="#">NM_005483.3</a>
<b>RefSeq Size:</b>	3344 bp
<b>RefSeq ORF:</b>	2871 bp
<b>Locus ID:</b>	10036
<b>UniProt ID:</b>	<a href="#">Q13111</a>
<b>Cytogenetics:</b>	19p13.3
<b>Protein Families:</b>	Stem cell - Pluripotency, Transcription Factors
<b>MW:</b>	106.9 kDa
<b>Gene Summary:</b>	Chromatin assembly factor I (CAF1) is a nuclear complex consisting of p50, p60 (CHAF1B; MIM 601245), and p150 (CHAF1A) subunits that assembles histone octamers onto replicating DNA in vitro (Kaufman et al., 1995 [PubMed 7600578]).[supplied by OMIM, Mar 2008]

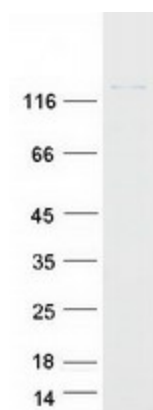
Product images:



Circular map for RC209138



Western blot validation of overexpression lysate (Cat# [LY417270]) using anti-DDK antibody (Cat# [TA50011-100]). Left: Cell lysates from untransfected HEK293T cells; Right: Cell lysates from HEK293T cells transfected with RC209138 using transfection reagent MegaTran 2.0 (Cat# [TT210002]).



Coomassie blue staining of purified CHAF1A protein (Cat# [TP309138]). The protein was produced from HEK293T cells transfected with CHAF1A cDNA clone (Cat# RC209138) using MegaTran 2.0 (Cat# [TT210002]).